

Church Notices

FIRST PRESBYTERIAN CHURCH
REV. P. D. PATRICK, Pastor
Sunday, August 3, 1952
9:45 a. m. Vacation Church School Commencement.

DAVID BAPTIST
W. L. McSwain, Pastor
Worship services every first and third Sunday morning at 11:00 and every second and fourth Sunday evening at 7:30.

SPECIAL BARGAIN WEEK
At DELLINGER'S



GENT'S WALLETS

\$3.50 — \$4.50 Values

Only \$1.98

PAY ONLY

\$1 A WEEK
A YEAR TO PAY

Postal Service Runs Big Deficit

Postmaster W. E. Blakeley today stated that the Postal Service, which serves every city, hamlet and rural-side community in the United States, is operating under the biggest deficit in the history of this government agency.

Special 42-pc. Set Silverware

Only \$14.95

52-piece Set
1847 Rogers
Silverware
\$74.50

52-piece Set
Community
Silverware
\$74.50

CHOOSE YOUR PATTERN

52-PIECE SET
Holmes & Edwards Silver
\$74.95

ONE Complete Set Famous

Make Crystal

\$24.75

ONLY ONE LEFT AT THIS PRICE

FIRST COME—FIRST SERVED

32-PIECE
SET DINNERWARE \$14.95

CLOSE-OUT GROUP LADIES' SUMMER
EARRINGS and NECKLACES and PINS
88c (No tax)

Slightly Dented — Slightly Scratched Group of Sterling and Silver Plated Holloware

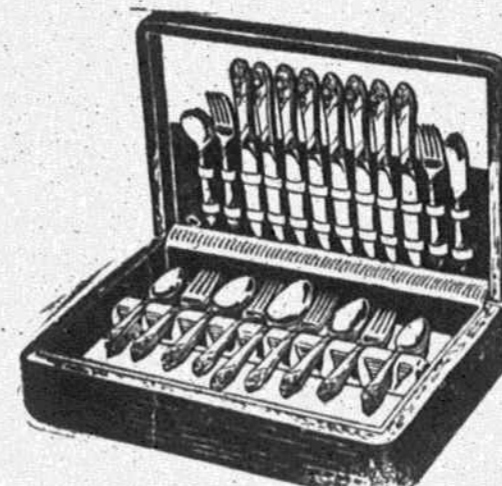
1/2 PRICE

STERLING COMPOTES — \$10.00 value \$5.00
STERLING CREAM SUGARS—\$12.00 values \$6.00
STERLING BUD VASE—\$4.75 value \$2.38
STERLING BON BONS—\$6.00 values \$3.00

Perfect For Home Use

1/2 PRICE

PLATED CREAM SUGARS—\$7.50 values \$3.88
PLATED SANDWICH TRAY—\$8.00 value \$4.00
PLATED BREAD & BUTTER PLATES—
Value \$1.50 — Now Only 75c
GET YOU A SET WHILE THEY LAST



With Each Purchase of Set of Silver Over \$25

We will Give Away FREE
1 Set Crystal Candleholders
A \$6 to \$8 Value



5-piece Place Setting

Only \$6.95

HAVILAND CHINA
PATTERN—ANNETTE
START YOU A SET TODAY

BUY IT
OPEN STOCK

Buy your complete Set and now a little Down and a little weekly.

Special 52-pc. Set Silverware

Only \$18.88

36-piece Set
1881 Rogers
Silverware
\$39.95

42-piece Set
1881 Rogers
Silverware
\$44.75

CHOOSE YOUR PATTERN

52-PIECE SET
1881 Rogers Silverware
\$49.95

\$24.95

COMPLETE SETTING FOR TABLE IN

SIX—INCLUDING

Set of Dishes

Set of Silver

Set of Crystal Glasses

Coasters and Ash Trays

6 PIECE SET
CLUB ALUMINUM \$19.95
FREE 8 3/4 INCH FRY PAN

8-PIECE SET
CLUB ALUMINUM \$29.95
FREE 8 3/4 INCH FRY PAN

Special Event



You are cordially invited to meet
D. C. CLARK
expert stylist, representing the
HOPKINS TAILORING COMPANY
FRIDAY and SATURDAY
August 8 & 9

with a special
DISPLAY SALE
of Made-to-Measure Clothes
FOR MEN AND LADIES

He will assist you in your selection of Fall and Winter fabrics to be made to your order, and advise you on the latest styles.

PLONK'S

Since 1945 the fixed operating costs have increased at a rate of nearly 1.5 billion dollars on an annual basis, while additions to the revenue by increases in postage rates and fees have been increased only at the rate of \$390 million a year, a difference of over a billion dollars in expenses above the annual additional revenues. Even with the new increases in postage rates, it is estimated that there will be about 669 million dollars deficit in 1953. And inasmuch as the deficit must be paid out of the general taxation, Postmaster General Jesse M. Donaldson is greatly concerned, and has called attention to the great increase in the cost of salaries and transportation in the current fiscal year over 1945.

The Post Office Department cannot set its financial policies, and does not. Departmental policies are set by direction of the Congress, the Interstate Commerce Commission and the Civil Aeronautics Board, as well as other regulatory agencies of the Federal Government. Salaries paid postal personnel are likewise set by the Congress. However, the use of personal services are controlled through staffing patterns of each post office. Approximately all travel rates are set by law or some regulatory agency. Rates for transportation by rail and by air, communication services, price paid for postage stamps, stamped envelopes and price paid for postal cards, as well as the price and quantity of supplies and materials are all set by federal regulatory authorities. The total obligations of the Post Office Department for the fiscal year, 1951, amounted to \$2,458,000,000, 95.6 percent of that amount was for salaries, transportation, travel and rents. The obligations estimated for 1952 amounted to \$2,738,105,261, while the estimate for 1953 shows an increase of 3.2 percent over the 1952 estimate. With 97 percent of the revenue of the Post Office Department, expended according to laws of the Congress and Federal regulatory agencies, the Postmaster General has only approximately 3 cents out of every dollar of revenue to spend as the demands of the Service require. Postmaster General Donaldson directed the biggest change in accounting ever undertaken by the department with the installation of the new money order system, which is calculated to save in 1953 alone some \$6 million, or 2,065 man-years of service, as well as save clerical time in issuing and paying money orders in the 41,000 post offices. This is one of the several steps to save on costs of operating the department, and shows the biggest saving. Another item in saving has been effected in the establishing of the Highway Post Office System. The cost of the use of highway post offices is much lower than the use of rail.

Dellinger's Jewel Shop

Kings Mountain's Leading Jewelers
BUY ON EASY TERMS AT DELLINGER'S—SMALL DOWN PAYMENTS