

Rules, Regulations Are Announced For Forty-Ninth Annual Floral Fair

Now You Can Get Anthony Dairy Products . . .

Home Delivered in Kings Mountain

Vitamin-enriched
Pasturized or Homogenized Milk
Whipping Cream — Butter (or margarine) — Eggs
Buttermilk — Skim Milk

Phone 684-w "Doc" McDaniel

for home delivery of our fine dairy products.

Anthony Dairy

Since 1896

Farm-Fresh Bottling Means Best-Flavored Milk

Competitive divisions for "Autumn Harvest," the Kings Mountain Woman's Club's 1952 Floral Fair, were announced this week.

Mrs. J. H. Patterson, publicity chairman, said organizational work for the annual event, major annual promotion of the Woman's Club, is well underway, with officials expecting the forthcoming event to be the most outstanding in the long history of the Floral Fair.

Mrs. George Houser is chairman of the event, which will be the forty-ninth annual Floral Fair of the Kings Mountain Woman's Club, and its predecessor, the Kings Mountain Civic League.

The event is scheduled for the Woman's Club building on Wednesday, October 29. The flower show division will show to the public from 12:30 to 7:30 p. m., and, as is customary, lunch and dinner, a popular feature of the fair, will be served.

Admission for the event will be 25 cents for adults, ten cents for children.

Following are the various divisions of the Floral Fair competition, including rules for making entries:

RULES OF THE FLOWER DIVISION

Please read carefully

- Anyone interested may exhibit.
- Only one entry is allowed an exhibitor in each class.
- Flowers in the show will not be sold. They remain the property of the exhibitor.
- Show open to the public from 12:30 P. M. until 7:30 P. M. Wednesday, October 29. Admission—Adults 25c Children 10c.
- Arrangement exhibits may be entered the night before the show between 7:30 P. M. and 9:30 P. M. or from 8 A. M. till 10 P. M. the day of the show.
- Flowers and materials used in arrangements need not be grown by the exhibitor. Garden flowers preferred.
- Horticultural exhibits will be received at the door on the day of the show from 8 A. M. until 10 A. M. Exhibitors furnish own containers, using coco-cola or milk bottles. Name tags will be furnished, if desired, by Entry Committee.
- All entries in Horticultural classes must be grown by exhibitor, and labeled if possible, as to variety. Potted plants must be in possession of exhibitor for at least three months before show.
- Judging will begin at 10:30 A. M. and no one will be allowed in exhibit hall during that time except special committees.
- The decision of the judges will be final.
- All exhibits must be removed by 10 A. M. following day.
- Club will not be responsible for personal property, although all care will be used to protect it.
- Only ribbons will be given in the Flower division, except for the Sweepstake award for which a prize will be given. Blue ribbons will be given all first awards. Red ribbons will be given all second awards. Yellow ribbons all third awards. Tricolor ribbons will be given in both horticultural and arrangement classes to the most outstanding entry. Ribbons may be withheld by the judges if in their opinion, the entries in any class are not worthy.
- Sweepstake prize will be given the person receiving the most blue ribbons in the horticultural and arrangement classes. In case of the red ribbons will be counted.
- Blue Ribbon winners in Division II, Section II will not be counted in Sweepstake awards.

DIVISION I

Horticulture

SECTION A—ANNUALS

Scale of Judging points	
Color	20
Size	20
Form	20
Stem & Foliage	20
Condition	20
100	

- Class
- Asters, 3 stems, one variety.
 - Antirrhinum (Snapdragons), 3 stems one variety.
 - Calendula, 3 stems, one variety.
 - Marigolds — Dwarf French, 3 stems, one variety.
 - Marigolds — Tall African, 3 stems, one variety.
 - Nasturtium—3 stems, one variety.
 - Zinnias — Giant, 3 stems, one variety.
 - Zinnias — Pompon, 3 stems, one variety.
 - Zinnias — Unusual & Novelty, 3 stems, one variety.
 - Petunias — Single, 3 stems, one variety.
 - Petunias — Double Fringed, 3 stems, one variety.
 - Tithania — (New Torch), 3 stems.
 - Salvia (Scarlet Sage), 3 stems.
 - Any variety not listed, 3 stems, one color.

SECTION B—PERENNIALS and BIENNIALS

- Class
- Cannas, 3 stems, buds permitted.
 - Feverfew, 3 stems.
 - Gerbera, 3 stems.
 - Verbena, 3 stems one color.
 - Salvia, 3 stems one color.
 - False Dragonhead, 3 stems.
 - Any variety not listed, 3 stems.

SECTION C—ROSES

Scale of Judging points	
Form	25
Color	25
Substance	20
Stem & Foliage	20
Size	10
100	

Hybrid Tea Roses (Stems to be at least 6 in. long, no buds named if possible.)

- Class
- Pink, Single specimen.
 - Red, Single specimen.
 - Yellow, Single specimen.
 - White, Single specimen.

- Two-toned, Single specimen.
- Three Blooms, One variety and color.
- Three Blooms, Different varieties. One bloom each.
- Best Collection, 5 or more varieties. One bloom each.
- Single rose, 1 spray, any color.
- Floribunda, Single specimen (bloom or spray) any color.
- Shrub rose, Single specimen, any color.
- Old Fashioned one bloom or spray, any color.
- Any unlisted type, single specimen, any color.

SECTION D—CHRYSTANTHEMUMS

Named if possible

Scale of Judging points.	
Color	15
Stem & Foliage	10
Fullness	15
Form	15
Depth	15
Size	30
100	

- Class
- Yellow, Exhibition type, Single specimen.
 - White, Exhibition type, Single specimen.
 - Pink, Exhibition type, Single specimen.
 - Any other color, Exhibition type, Single specimen.
 - Collection, Exhibition type, 3 of one color and variety.
 - Best Collection, Exhibition type, 5 varieties. One bloom each.
 - Pompon, Single Specimen, one stalk, any color.
 - Pompon, Collection, 3 varieties, any color.
 - Daisy, Single specimen, one stalk of any color.
 - Daisy Collection, 3 varieties of any color.
 - Buttons, Specimen, 1 stalk, any color.
 - Button, Collection, 3 varieties, any color.
 - Any other type, Specimen, 1 stalk, any color.
 - Best Collection, Any varieties, colors or type, 1 bloom each. Number of varieties and culture count.

SECTION E—DAHLIAS

Varieties — Named if possible

Scale of Judging points.	
Color	20
Substance	20
Form	20
Size, according to variety	15
Stem & Foliage	15
Condition	10
100	

- Class
- Giant Exhibition, Single bloom, any color.
 - Cactus, Single bloom, any color.
 - Pompon, 3 blooms, one variety, any color.
 - Single, 3 blooms, one variety, any color.
 - Miniature, 3 blooms, one variety, any color.
 - Any other type, 3 blooms, one variety, any color.
 - Best Collection, Any variety, color or type, 1 bloom each. Number varieties and culture count.

SECTION F.—BULBOUS, CORMS, RHIZOMES

Name if possible

- Class
- Iris, one stalk, any variety.
 - Crocus, one bloom, any variety.
 - Any other type, one bloom.

SECTION G — FLOWERING OR BERRYING SHRUBS AND VINES

One spray not over 3 feet

Scale of Judging points.	
Distinction of species	20
Size according to species	20
Form, color, substance and abundance of bloom	20
Foliage and Stem	20
Condition	20
100	

- Class
- Pyraecantha.
 - Holly
 - Bittersweet
 - Callicarpa (Beauty Berry)
 - Camellia, sansaqua, single bloom, any color.
 - Camellia, japonica, single bloom, any color.
 - Any unlisted variety.

SECTION H — POTTED PLANTS AFRICAN VIOLETS

Name if possible

Scale of Judging points.	
Symmetry of leaf pattern	35
Floriferousness	20
Size of bloom	10
Color	10
Condition	25
100	

- Class
- Blue
 - Purple
 - Pink
 - White
 - Double
 - Any other

ORCHIDS

Name if possible

- Class
- Any color or variety.
 - Any color or variety.
 - Camellia or Peony type, any color.
 - Single, any color.
 - Double, any color.
 - Any foliage plant, pot not to exceed 9 in. in diameter.
 - Any unlisted plant, pot not to exceed 9 in. in diameter.

DIVISION II

Artistic Arrangements

SECTION A

Scale of Judging points.	
Color Combination	25
Relation to container	10
Design	25
Distinction & Originality	20
Suitability of Combination of material	10
Condition	10
100	

- Class
- Miniature arrangement, not over 3 inches.
 - Miniature arrangement, not over 6 inches.
 - Arrangement in a bottle, using any suitable material.

- Rose arrangement in your favorite container.
- Dried Arrangement.
- Arrangement of fruits and flowers in any suitable container.
- Arrangement of fruits or vegetables — or both — with or without foliage.
- Line Arrangement using any foliage and not more than 5 flowers.
- Mass Arrangement of mixed fall flowers.
- Arrangement using one variety of garden flowers.
- Arrangement, all green.

SECTION B — INVITATIONAL CLASS

AUTUMN HARMONY

(Backgrounds, accessories permitted, also foliage.)

By Members of Garden Clubs of Garden Council of Kings Mountain.

- Class
- Autumn Dawn.
 - Autumn Sunrise.
 - Autumn Sky.
 - Autumn Sunset.
 - Autumn After-glow.
 - Autumn Night.

SECTION C — JUNIOR DIVISION

- Boys and Girls aged 5 thru 12 years Name and age on entry tag.
- An arrangement of wayside material including wild flowers, grasses, weed or woodland material or object.
 - Collection of Butterflies mounted and named.
 - A Bird House.
 - Feeding Station.
 - Collection Animal Kingdom — Animals made out of vegetables, fruits or nuts.
 - Corsage for doll — pinned on your favorite doll, sitting in her chair.

SECTION D — MEN

- Class
- An arrangement to Suggest a Sport.
 - An arrangement in Your favorite container.

APRONS AND BAZAAR DIVISION

Rules For Aprons and Bazaar

- Anyone may enter.
- All entries become the property of the Woman's Club.
- Entries must be brought to the Club House on Tuesday, October 28th, between 3-5 P. M. or 7:30-8:30 P. M.
- Exhibitor is requested to mark article as to entry class — Estimated cost of materials attached to article will greatly benefit the committee.
- No article will be sold until after the judging which will begin at 9 A. M. on day of show.
- Prizes and Ribbons will be awarded — Blue 1st., Red 2nd., Yellow 3rd.

- Class
- Fancy Apron — 1st., 2nd., 3rd.
 - Fancy Utility Apron — 1st., 2nd., 3rd.
 - Best Utility Apron — 1st., 2nd., 3rd.
 - Man's Barbecue Apron — 1st., 2nd.
 - Man's Uniform Apron — 1st., and 2nd.
 - Child's Fancy Apron 1st.
 - Child's Plain Apron 1st.
 - Miscellaneous Article 1st.

CAKE, PIE, CANNED GOODS AND CANDY DIVISION

- Rules for Cakes, Pies, Canned Goods & Candy
- Anyone may enter. All entries become the property of the Club.
 - Entries must be in by 10 A. M. the day of the show.
 - No commercial mixes to be used for cakes, cookies, pies, icing or candy except in Class No. 7 - No. 23 & Candy Division Class No. 8.
 - Judging will begin at 10 A. M.
 - Prizes and Ribbons awarded. Blue 1st., Red 2nd., Yellow 3rd.

CAKES — COOKIES

- Class
- Pound Cake (Not iced) — 1st., 2nd., 3rd.
 - Angie Food Cake — 1st., 2nd., 3rd.
 - Cocanut Cake — (White or yellow layers) 1st., 2nd., 3rd.
 - Chocolate Cake (White or yellow layers) — 1st., 2nd., 3rd.
 - Devil's Food Cake (Any icing) — 1st., 2nd., 3rd.
 - Carmel Cake (White or yellow layers) — 1st., 2nd., 3rd.
 - Best Cake using Commerical Mix — 1st., 2nd., 3rd.
 - Best Miscellaneous Cake — 1st., 2nd., 3rd.

CAKES AND COOKIES

- Made by Child 8-18 years
- Class
- Chocolate Cake (white or yellow layers) 1st., 2nd.
 - Cocanut Cake (white or yellow layers) — 1st., 2nd.
 - Best Miscellaneous Cake — 1st., 2nd.
 - Cookies (2 kinds, 1 doz. each) 1st., 2nd.

PIES

- Class
- Lemon Meringue — 1st., 2nd., 3rd.
 - Cocanut Cream (With Meringue) — 1st., 2nd.
 - Cocanut Custard (no Meringue) — 1st., 2nd.
 - Butterscotch — 1st., 2nd.
 - Chocolate Cream (with Meringue) — 1st., 2nd.
 - Chiffon Pie (any kind) — 1st., 2nd.
 - Best Miscellaneous Pie — 1st., 2nd.
 - Apple Pie (Fresh or canned fruit) — 1st., 2nd.
 - Peach Pie (canned-dried-frozen fruit) — 1st., 2nd.
 - Any other fruit pie — 1st.
 - Best Pie using commercial Mix — 1st.

CANNED GOODS

(All entries must be labeled)

- Class
- Best qt. Syrup peaches — 1st.
 - Best qt. any other fruit — 1st.
 - Best qt. vegetable — 1st.
 - Best qt. peach pickle — 1st., 2nd.
 - Best qt. Cucumber Pickles — 1st., 2nd.
 - Best other pickles — 1st.
 - Best relish — 1st.
 - Best Preserves — 1st.
 - Best Jelly — 1st.

CANDY

- Class
- Collection 5 kinds, each variety, 10 pieces — 1st., 2nd.
 - Collection 3 kinds, each variety 15 pieces — 1st., 2nd.
 - Fudge (30 pieces) — 1st., 2nd.
 - Seafoam (30 pieces) — 1st., 2nd.
 - Divinity (30 pieces) — 1st., 2nd.
 - Mints (1 lb. or more) — 1st.
 - Miscellaneous (15 pieces) — 1st.
 - Best candy made with commercial mix — 1st., 2nd.
 - Candy made by child 12 years or under (15 pieces) (No Commercial Mix) — 1st., 2nd.

Belk's

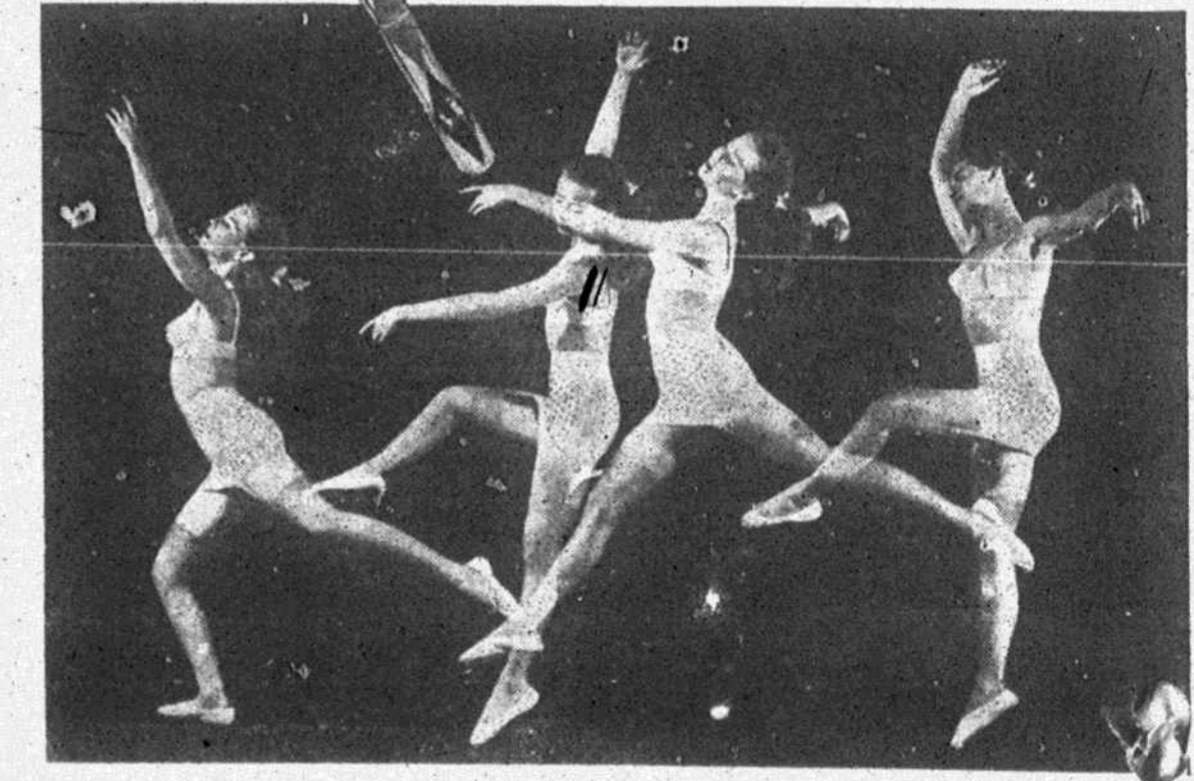
Department Store

Home of Better Values



A New Thrill is in our Store for You!

Invisible
White Magic
Newest
Playtex FAB-LINED
Girdle



Never such an idea as White Magic—expressed in such a magical girdle as Playtex Fab-Lined!

It's like stepping into another world—to see how this figure-diminishing girdle makes the inches vanish, to feel the freedom that Playtex gives you! It's like wearing a slim cloud—to enjoy the comfort of that powder-soft fabric lining next to your skin—fused to the smooth latex sheath without a seam, stitch or bone. And more magic—it's invisible under the most clinging clothes. All this—and the beauty of White Magic, too!

Come, write, phone for your Playtex Girdle today!

Belk's Department Store, Kings Mountain, N. C., Phone 5

Please send me the following PLAYTEX® GIRDLES.

Model	Color	Price	Model	Color	Price	Model	Color	Price
GARTER GIRDLE (Medium) (Pink)	Pink	4.99	GARTER GIRDLE (Medium) (White)	White	4.99	GARTER GIRDLE (Medium) (Black)	Black	4.99
GARTER GIRDLE (Medium) (Blue)	Blue	4.99	GARTER GIRDLE (Medium) (Green)	Green	4.99	GARTER GIRDLE (Medium) (Purple)	Purple	4.99
GARTER GIRDLE (Medium) (Red)	Red	4.99	GARTER GIRDLE (Medium) (Yellow)	Yellow	4.99	GARTER GIRDLE (Medium) (Orange)	Orange	4.99
GARTER GIRDLE (Medium) (Lavender)	Lavender	4.99	GARTER GIRDLE (Medium) (Mint)	Mint	4.99	GARTER GIRDLE (Medium) (Coral)	Coral	4.99
GARTER GIRDLE (Medium) (Cyan)	Cyan	4.99	GARTER GIRDLE (Medium) (Magenta)	Magenta	4.99	GARTER GIRDLE (Medium) (Teal)	Teal	4.99
GARTER GIRDLE (Medium) (Gold)	Gold	4.99	GARTER GIRDLE (Medium) (Silver)	Silver	4.99	GARTER GIRDLE (Medium) (Bronze)	Bronze	4.99

In SLIM Golden tubes White Magic or Blossom Pink—\$4.95 and \$5.95. Now with new *ADJUST-ALL Garters that adjust to your lines and liking with a touch! \$6.95. Other Playtex girdles from \$3.50. Extra-Large sizes slightly higher.

NAME _____
ADDRESS _____ CITY _____ STATE _____
 CHARGE CHECK C.O.D. MONEY ORDER