

# Mountaineers Lose Thriller To Hill Toppers By 12 to 7

Kings Mountain failed to hold onto a 7-6 halftime lead here Friday night, allowing the visiting Rutherfordton-Spindale Hill Toppers to push 57 yards for the winning marker after a third-period fumble recovery. Final score was 12 to 7 in the well-played Western AA conference game.

Tailback Jim Kimmell scored for the Mountaineers late in the second period and kicked the go-ahead point. Kings Mountain moved 87 yards after stopping a determined visitor drive, with the drive sparked by the passing of Ollie Harris, back in action after a pulled ligament two days before the opening game, and the running of Kimmell, Wingback Don McCarter and Fullback Gene Patterson. A Harris to McCarter toss good for 27 yards set up Kimmell's off-tackle run to paydirt.

The winners scored first, marching 81 yards with Bill Thompson tossing to Doug Padgett 29 yards for the tally.

Guard Ray Dixon recovered a Kings Mountain fumble, halting a 30-yard drive, and the smooth-working T-formation visitors moved for the winning tall late in the third canto. A Thompson to Padgett connection for 21 yards set the tally up on the Mountaineer 5. Fullback Earl Byers bucking over two plays later from the two. Max Byrd missed a placement try after the first

### STATISTICS

PLAYER	KINGS MOUNTAIN	RUTHERFORDTON-SPINDALE
Byers	12	0
Kimmell	14	83
McCarter	7	24
Ruth	1	0
Patterson	3	4
Thompson	3	0
<b>TOTALS</b>	<b>38</b>	<b>123</b>
<b>YARDS</b>	<b>153</b>	<b>37</b>
<b>POINTS</b>	<b>7</b>	<b>12</b>

PLAYER	KINGS MOUNTAIN	RUTHERFORDTON-SPINDALE
Byers	7	42
Terry	20	114
Moore	6	31
Thompson	6	29
<b>TOTALS</b>	<b>39</b>	<b>207</b>
<b>YARDS</b>	<b>207</b>	<b>205</b>
<b>POINTS</b>	<b>12</b>	<b>7</b>

receive in the north end of the field.

K. Davis kicked into the R-S end zone and the visitors took over on their 20. Terry hit right guard for 8. M. Byrd made a yard but R-S drew 15 for illegal use of the hands. Terry hit straight in for 9 and was stopped for 1 over guard. Lovelace punted to the KM-48 and D. McCarter was stopped cold.

Kimmell was held for no gain, Patterson lost 5 but Harris tossed to Layton for 18 and a first down. Harris passed complete to Layton again but KM drew 15 for illegal use of the hands. Harris' toss was intercepted by W. Byers on the R-S-45.

Moore hit the line for 5 and Terry for 6 and a first down. Thompson passed incomplete to Padgett and his next two was intercepted by D. McCarter on the KM-30 and returned to the KM-36.

Kimmell made 4, Harris passed incomplete and McCarter ran a reverse for 7 and a first and ten. Kimmell made 6 at first end and McCarter 1 on a reverse. Harris passed to Kimmell for 27 and a first on the RS-20. Harris' pass to McCarter on the 10 was too long. McCarter picked up 1 on a reverse. Kimmell tossed incomplete to Ruth. Harris passed incomplete to Layton and the ball went over on downs on the RS-19.

Terry hit the line for 2 and

again for 3. Thompson passed to Byers for 16 and a first and ten. Byers hit the line for 10 and a first. Moore went over right guard for 8 as the period ended, scoreless.

**SECOND QUARTER**  
Thompson ran a keep for 3 and a first down. Moore hit the line for 9 and Byers made the first with a yard on the next play. Thompson found Padgett in the clear from the KM-29 for the first touchdown. M. Byrd missed the placement try for point. Score — RS 6, KM 0

Huffstickler kicked to the KM-20 to McCarter who came back 11 yards, fumbled and RS recovered. Terry fumbled but recovered for a yard loss. Byers hit the middle for 15 and a first. Thompson passed incomplete to Bland, Byers was stopped for 1, Thompson missed Byers with a pass and Thompson was held to 3 as KM took over on downs on the KM-13.

Kimmell went off right tackle for 7 and again for 3, with Patterson hitting for 3 and the first down. Kimmell went through the middle for 12 and another. McCarter made 7 on a reverse. Harris' pass to Kimmell was good but for no gain. Kimmell hit right tackle for 9 and the first. Harris tackled for Layton for 11 and a first and ten. Harris' pass to Kimmell failed to connect. Harris, back to pass, was trapped and lost 3. Harris passed to Kimmell for 13 and Kimmell bucked the line for 3 and the first on the next play. Harris lost 11 trying to find a receiver but connected with McCarter for 27 to the RS-6 on the next play. Kimmell hit right tackle for the touchdown. Kimmell's placement was good. Score — KM 7, RS 6.

K. Davis kicked into the end zone but RS refused a penalty against KM on the play. Terry skirted right end for 14 and a first and ten. Terry made 11 but RS drew 5 for offside. Thompson passed incomplete and went back to toss another but was trapped to his right, reversed and picked up 6. Byers went over left guard for 10 but fumbled. Hudson recovering for KM but the whistle ended the half. Score — KM 7, RS 6.

**THIRD QUARTER**  
Kings Mountain received in the north end. McCarter taking Huffstickler's kick on his 18 and running back 11. McCarter picked up 2 on a reverse. Kimmell hit right tackle for 13 and a first down. Patterson made 1 and George 12 for a first and ten. McCarter picked up 2 but Ruth fumbled hitting outside his right tackle and Dixon recovered for the visitors on the RS-43.

Moore made 3 on the right and Terry 4 on the left. Terry hit outside tackle for 12 and a first down. Thompson made 2 and pitched out to Terry for 6. Terry hit the line for 2 and a first and ten. Terry ran to his right to pass, was trapped and ran back to his left for 8. Moore lost a yard. Terry gained 2, cancelled as RS drew

### YARDSTICK

SCORE	KM	R-S
1st downs rushing	7	12
1st downs passing	5	10
1st downs penalty	0	1
Total first downs	13	23
Yds. gained rushing	123	207
Yds. lost rushing	37	2
Net rushing	86	205
Passes attempted	16	8
Passes completed	8	3
Yds. gained passing	105	66
Net rushing & passing	191	271
Number of plays (not counting kicks and penalties)	45	47
Average gain per play	4.2	5.8
Passes intercepted by	1	1
Yards runback	6	0
Number of punts	2	2
Yds. punts averaged	43	32
Yds. punts returned	10	18
Number of kickoffs	2	3
Yds. kickoffs averaged	60	41
Yds. kickoffs returned	32	0
Ball lost on fumbles	2	1
Number penalties	4	5
Yds. lost by penalty	39	55
<b>TOTAL YARDS GAINED IN GAME (add yards gained run, back punts, kickoffs &amp; intercepted passes to net rushing, passing and penalty gains)</b>	<b>294</b>	<b>328</b>

5 for offside. Thompson found Padgett again, this time for 21 to the KM-5, first and goal. Thompson made 3 and Byers cracked over for the score. Byers failed to buck the point over. Score — RS 12, KM 7.

Patterson brought Huffstickler's kickoff back 10 to the KM-28. Kimmell made 2 and Harris passed incomplete to McCarter as the third period ended. Score — RS 12, KM 7.

**FOURTH QUARTER**  
Harris hit McCarter with a pitch good for 9 yards and a first on the KM-39. Harris passed to McCarter for 8 but KM drew a penalty for illegal use of the hands, losing 19 yards. Harris passed to Kimmell for no gain and Kimmell failed to gain into the line. McCarter picked up 4. Kimmell punted but RS drew 15 yards for unnecessary roughness. Kimmell's punt sailed high and for 49 yards to the RS 12 where M. Byrd took it and raced back about 25 yards, cut to 18 when RS drew 15 for clipping.

From the RS-15, Byers made 3. Terry 4 and 1 and Lovelace punted to the KM-45 to McCarter who ran back 10 yards.

Kimmell hit off right tackle for 18 and a first down. Kimmell fumbled, recovered for a 3 yard loss. Harris' pass was over McCarter's head. Harris went back to pass, was trapped and lost 15. Kimmell punted out-of-bounds on the RS-8.

Terry made 7, 2 and 14 for a first down. Moore hit guard for 6, KM drawing 5 for defensive holding giving RS first and ten on the RS-43. Terry hit for 8 and 3 and a first. Thompson made 3 as the game ended. Final score — RS 12, KM 7.

Terry made 7, 2 and 14 for a first down. Moore hit guard for 6, KM drawing 5 for defensive holding giving RS first and ten on the RS-43. Terry hit for 8 and 3 and a first. Thompson made 3 as the game ended. Final score — RS 12, KM 7.

### LINEUPS

POS.	KINGS MTN.	RUTH.-SPIN.
LT	Richard George	Doug Padgett
LG	Jimmy Caveny	Howard Laughter
C	Bob Hamilton	Charles Byrd
RT	Kenneth Davis	Wade Byrd
QB	Tommy Layton	Al Thompson
RB	Robert Davis	Steve Martin
FB	Tommy Layton	Ray Hand
QB	Bill Ruth	Bill Thompson
RB	Jimmy Kimmell	Paul Terry
FB	Don McCarter	Max Byrd
FB	Gene Patterson	Earl Byers

**SCORE BY QUARTERS:**  
Kings Mountain — 0 7 0 0 — 7  
Ruth-Spindale — 0 6 0 0 — 6

**SCORING:** Kings Mountain — touchdown, Kimmell 10-yard run in 2nd quarter; PAT — Arnold. Rutherfordton-Spindale — touchdowns, Padgett 29-yard pass, 2nd quarter; and Byers' 12-yard plunge, 3rd quarter.

**STATS:** Kings Mountain — end, Franklin Hunt, tackle; Benny Arnette, Sam McCarter, Charles Yelton, guard; Eddie Goforth, center; Milton Hogue, back; Ollie Harris, Bill Spindale, end; Huffstickler, tackle; Womack, Carpenter, guards; Dixon, Vickers, Ellis, backs; Moore, a wingback.

**OFFICIALS:** Nick Ognovich, referee; Marion Bird, umpire; Bob English, head linesman; George Book, field judge.

Britain claims that her farms produce more per acre than any other farm land.

**Our "Extra" Service**  
Means Extra Driving Economy!  
Driving starts to cost more when you overlook minor services and are suddenly faced with major repairs. It won't happen here! We check all vital areas every time you drive up!

**CENTER SERVICE**  
Corner Mountain and Battleground  
Phone 62

## Mountaineer "Bees" Drop To Lincolnton

Kings Mountain high school's "B" football team dropped a close 6-0 game to Lincolnton at City Stadium Monday afternoon. The Little Mountaineers displayed a tough defense but failed to get an attack going. The visitors scored on a pass interception.

The "Bees" are scheduled at Lincolnton on Monday afternoon and at Cherryville next Thursday, rain cancelling the contest last Thursday.

In the lineup for Kings Mountain were James Abernathy, Dewitt Blanton, Charles Cashlon, Clyde Cobb, Lewis Cole, Eddie Goforth, George Harris, Clyde Ford, Michael Houser, Clyde Hinson, Palmer Huffstickler, David Kincaid, Jerry Logan, Earl Marlowe, Sammy McCarter, Joe Ormand, Bud Rhea, Jimmy Robbs and Charles Yelton.

## Methodist Youth Sponsor Bazaar

Fresh red hot yams will be an order of the day on Saturday night, October 18, at the Old Southern Yam Roasts and Church Bazaar being held on the grounds, back of Grace Methodist church, Cleveland Avenue, Kings Mountain, 6 to 9 p. m.

Cake Walks, Games, Contests, and gay festival music reigned over by a trio of colorful clowns will furnish entertainment to guests, who will find available plenty of Hot Food, Coffee, Milk, and Cold Drinks.

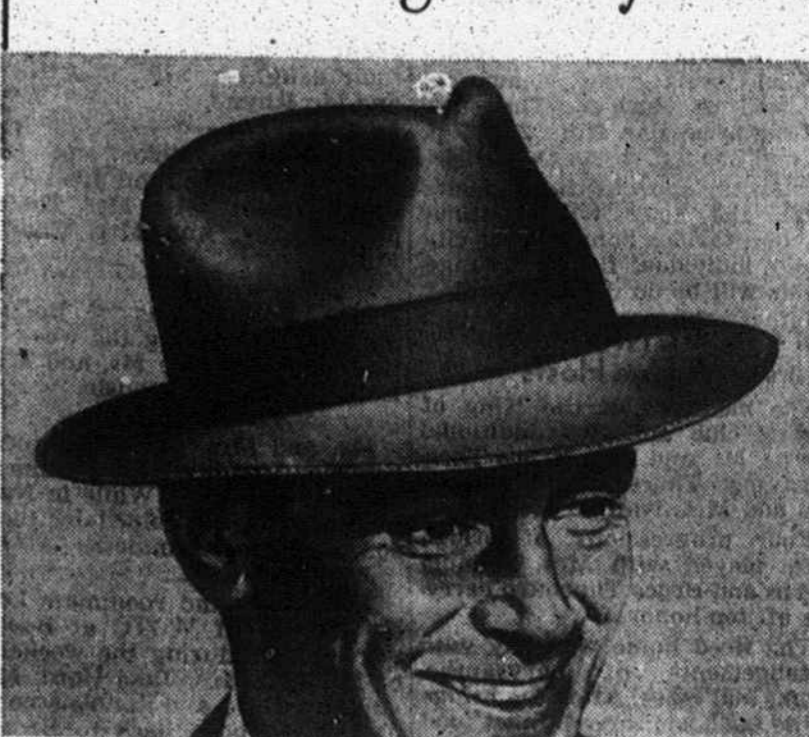
Booths will feature unusual displays of home cooked foods and fancy needle-works, aprons, and other handiwork which will be offered for sale, along with other donated merchandise.

Closing the evening will be an unusual food auction which will sell at highest bidder various articles of food.

The Yam Roasts and Bazaar are being sponsored by the M. Y. F. with all proceeds going to the Grace Methodist Church M. Y. F. Building Fund.

Spaniards landing in South and Central America several hundred years ago, were the first to enjoy Yam Roasts, which today have grown to an annual traditional South American festival, for which everyone dresses in colorful costumes and goes out to enjoy the roasted goodness of Campfire Yams.

who says a fine hat must cost big money?



# ADAM Royal

only \$5.00

See how we make prices melt on felt! Our Adam Royal is pure imported fur felt—pre-shaped for distinction by Adam factory experts! It has a luxurious satin lining—a bound edge that's bound to look smart—and a trim, matching band. A truly fine hat—yet the price is low—only \$5!

Millions of Men Let ADAM Hat 'Em!  
Adam Hats: \$5, \$6, \$7.50, \$10

# MYERS'

## DEPARTMENT STORE

Dress Shop • Second Floor

First Time Offered In Kings Mountain  
**it's KEETER'S for**

# Chetopa Twill

A New, Different, Exclusive Fabric in

# Lee

Matched Shirts and Pants  
Outwears Ordinary Twills...  
Keeps that Brand-New Look  
Your choice of handsome colors  
Sanforized

GUARANTEED to Look Better, Fit Better and Wear Longer or Your Money Back.

**Lee CHETOPA TWILL SHIRTS \$3.49**  
Sizes 14 1/2 to 17

**Lee CHETOPA TWILL PANTS \$4.95**  
zipper fly  
Sizes 29 to 42

Size thru 50 at no extra charge  
**KEETER'S—Your Headquarters for LEE Work Clothes**

# KEETER'S

## You Can't Beat A Bank Loan

- Low Cost
- Prompt Service
- You Choose Your Own Insurance Agent
- No Red Tape
- No "EXTRA" Charges

REGISTER NOW TO VOTE on NOV. 4th.

BE SURE TO SEE US FIRST FOR YOUR AUTO LOAN  
Visit our Personal loan department  
Second Floor, Dr. J. E. Anthony Building

# First National Bank

Member FDIC

## DELLINGER'S

It Costs Less than You Think to Give a Trustworthy

# Hamilton

AMERICA'S MOST WANTED WATCH

**EASY TERMS**  
Small Deposit  
Holds Any Watch  
Until Christmas

**LITTLE DOWN  
LITTLE WEEKLY  
EASY TERMS**

ELVA—\$57.75  
17 jewels, Natural or white gold-filled case.

CRAIG—\$60.50  
17 jewels, Natural gold-filled case.

CECILE—\$110.00  
17 jewels, 14k natural or white gold case.

FREDA—\$64.00  
17 jewels, Natural gold-filled case.

EMERY—\$71.50  
17 jewels, Natural gold-filled case. Expansion band.

AMERICA'S MOST WANTED WATCH ON AMERICA'S MOST CONVENIENT TERMS

LONNIE—\$71.50  
17 jewels, 14k natural gold case.

## DELLINGER'S JEWEL SHOP

Kings Mountain's Leading Jewelers  
Kings Mountain Authorized Dealer for Bulova, Hamilton, Elgin, Longines, Wittnauer, Gruen, Tissot Watches.

Our "Extra" Service

MEANS Extra Driving Economy!  
Driving starts to cost more when you overlook minor services and are suddenly faced with major repairs. It won't happen here! We check all vital areas every time you drive up!

Our Care Will Make Your Car Last Longer

## CENTER SERVICE

Corner Mountain and Battleground  
Phone 62