

QUESTION: Can a tree planting machine be used on all types of terrain?

ANSWER: No, tree planting machines will not entirely replace hand planting, according to John E. Ford, assistant forester for the State College Extension Service.

NOTICE TO STOCKHOLDERS: Notice is hereby given that the annual meeting of stockholders of the First National Bank will be held in the lobby of the First National Bank, Kings Mountain, North Carolina, on Tuesday, January 13, 1953, at 4 p. m.

L. E. ABBOTT, Cashier

level ground are able to plant from 7,000 to 10,000 seedlings in an eight-hour day. The same two men, using hand planting methods, might be able to set out 1,000 to 1,500 seedlings in the same length of time, the assistant forester says.

Ford believes that the new planting machines will help speed the reforestation of North Carolina, especially in the Coastal Plain and Lower Piedmont.

FORTUNE TELLER

ORIENT

2 3 4 5 6 7

YOU can have fun figuring out your message from the Orient by use of this pleasant little letter puzzle. If the number of letters in your first name is 5 or less, subtract from 7. If more than 5 letters in your first name, subtract from 11. Now take this result and find your key letter in the word ORIENT at the top of this puzzle. Then, starting at the upper left corner, check each one of your large key letters as it appears from left to right. Below the key letters is a code message for you.

T	I	N	T	E	R	E	N	I	O	N	E
O	P	E	V	A	S	V	O	T	O	C	O
O	N	E	I	R	T	O	N	E	I	R	T
R	I	O	N	E	T	O	N	E	R	I	T
E	E	R	O	N	T	I	N	E	I	T	R
I	D	E	W	R	M	F	M	E	L	O	S
N	E	R	O	I	T	O	T	R	I	N	E
I	R	E	O	N	T	O	R	T	E	I	N
T	R	E	O	N	I	T	E	R	I	O	N

Holiday Circumstances Make Roads More Dangerous During Yule Season

Bad driving conditions plus unusual circumstances add up to plenty of trouble for holiday drivers.

In a study of year-end holiday accidents over the past three years, the Institute for Safer Living of the American Mutual Liability Insurance Company concludes that there will be a minimum of 1300 highway fatalities during the period from December 24 of this year through January 1. Fatalities during this period will run an estimated 22% higher than for any other nine day period during December.

A further analysis by the Institute attributes a major portion of the increase to these specifically hazardous holiday driving activities: (1) Driving to or from the local community dances and parties; (2) Driving to or from office and business parties; (3) Using the car for hurried last minute Christmas shopping; (4) Unusually heavy use of the family car by young people home for the holidays; (5) Taking holiday motor trips to and from distant points.

While these destinations themselves are not any more hazardous than at any other time of the year, it is the combination of holiday circumstances that makes these trips real tests of driving sense. Such circumstances include: more parties and gatherings where liquor is served; seasonal bad weather conditions with increased probability of

skids and crashes; heavily congested holiday traffic; more driving distractions due to the general holiday spirit; general relaxation of judgment.

The following rules are offered by the Institute for avoiding this often fatal combination of conditions and circumstances:

1. Plan to keep your driving at a minimum during the holiday season. Use train, bus, taxi or trolley when you can and especially when your good sense tells you that you should not drive.
2. Watch those drinks if you drive to parties and social gatherings: the driver must let someone else do his drinking, he must abstain.
3. Properly caution younger drivers using the family car and make certain that their training and practice are sufficient to meet the season's demands.
4. Travel at carefully reduced speeds when visibility is poor, or the roads slippery.
5. Use your skid chains when road conditions demand them.
6. Allow plenty of time for those longer trips. Don't hurry and don't allow yourself to become tired or sleepy, especially in bad driving weather.
7. Watch out for the actions of other drivers on the road; they may not know these rules.

Remember that December is the worst month of the year for highway accidents, but the week long holiday season is what really piles up that extra total of fatalities and crippling injuries.

The Institute hopes its estimate is too high. You and your friends by observing the above rules can spoil the result of its careful calculation.

Free Seedlings Are Going Fast

Four-H Club members who want to take advantage of free seedling offers made by pulpwood companies had better see their county agent immediately, according to John E. Ford, assistant forester for State College's Agricultural Extension Service.

To date, Ford said, 116 orders from 16 counties have been received for a total of 226,990 seedlings. At the same time last year only about half that number had been ordered.

Alleghany County, with 24 orders for 101,500 trees, has broken the record for number of seedlings ordered by any one county in a single season. The previous high was 97,000 seedlings ordered by Montgomery County in 1950-51.

The following seedlings are still available in the areas to which they were allotted: loblolly pine, 533,700; shortleaf pine 123,500; white pine, 199,000.

Instructions for planting seedlings are given in Extension Circular No. 371, "Plant Forest Trees," copies of which may be obtained from the local county agent or by writing Publications Department, N. C. State College, Raleigh. Prepared by Extension Forester John L. Gray, the circular covers kinds of trees to plant, number to plant per acre, land preparation, and step-by-step procedure for planting.

Farm demonstration work, fore runner of today's Agricultural Extension Service, got its start in 1903 near Terrell, Texas, when the late Dr. Seaman A. Knapp first introduced this new method of out-of-school agricultural education.

WISHES COME TRUE

Make your holiday good wishes for your friends and relatives come true. Christmas Seals make possible the year-round TB prevention and control program of the tuberculosis associations. TB attacks 115,000 persons in this country a year. The fight must go on.

Buy and Use Christmas Seals

Select Toys to Fit Child's Age Level

A child's Christmas toys should be chosen with as much care as you would buy his clothes—to "fit" his age level.

If the child is just learning to walk and climb, give him play materials to stimulate these activities. He needs his first picture book when he begins to talk, house-keeping toys at about three when he begins to want to help mother, and crayons and scissors when he can begin to handle them.

Parents, aunts, uncles and cousins should consider what the child is ready for as regards physical growth and mental and social development in selecting toys.

If toys are selected with some relation to the child's growth, and needs, they will be toys which stimulate self-reliance.

Most children, it is believed, can fare better with fewer but carefully selected toys.

As of November 26, approximately 44.3 million pounds of frozen, ready-to-cook turkeys from the 1952 crop have been purchased to provide an outlet for surpluses. Purchases in the State will be 1,410,000 pounds. The turkeys will be distributed to non-profit school lunchrooms.

To Relieve Misery of

COLDS

take 666

LIQUID OR TABLETS—SAME FAST RELIEF

PRESCRIPTION SERVICE

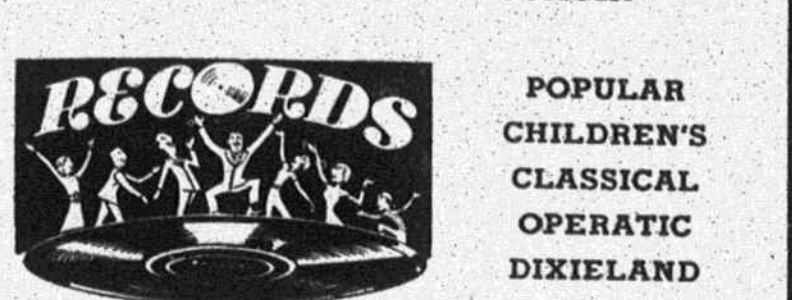
We Fill any Doctors' Prescriptions promptly and accurately at reasonable prices with the confidence of your physician.

Kings Mountain Drug Company
THE REXALL STORE
Phones 41-81
We Call For and Deliver



This Christmas Give A Record Player

For Full Enjoyment All Next Year! **\$9.95 up**



Logan Supply Co.

Bessemer City Road Phone 1014

SUBSCRIBE TO THE HERALD!

AVOID THE CHRISTMAS RUSH ON LONG DISTANCE



Make Your Calls Early!

MERRY CHRISTMAS and best wishes for the New Year.

THE TELEPHONE FOLKS

LONG DISTANCE telephone lines will be crowded on Christmas Eve and Christmas Day in spite of the many new circuits we've added. Many soldiers will be calling home. We'll be on the job doing our best to put all calls through but there will be delays. You'll get faster service if you make your calls before Christmas Eve or after Christmas Day. Whenever you call, you save time when you call by number.

Southern Bell Telephone and Telegraph Company.

Big New '53 FORD

THE NEW STANDARD OF THE AMERICAN ROAD!

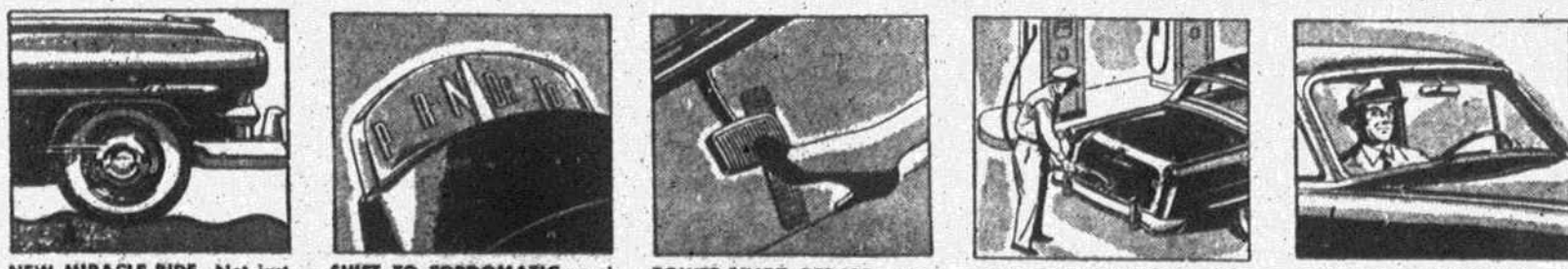


With 41 "Worth More" features... It's worth more when you buy it... worth more when you sell it!

This '53 Ford sets an entirely new standard for the American Road. For in this big new Ford you'll find 41 "Worth More" features that give you more of the things you want... more of the things you need... than ever before in low-priced car history. You'll find the "Go" you need to handle today's long-distance driving. You'll enjoy Ford's new *Miracle Ride* that brings you the smooth, quiet riding comfort you need for today's level parkways or rough, rutted byways... plus nearly effortless steering, braking, and parking. And you'll see beauty that belongs wherever you may drive.

When you see this new Ford at your Ford Dealer's, you'll understand why it is worth more when you buy it... worth more when you sell it. You'll agree that here, indeed, is the New Standard of the American Road!

A few of the 41 "Worth More" features in the 1953 Ford



NEW MIRACLE RIDE—Not just more responsive spring and shock absorber action, not just foam rubber cushions, but a balanced ride that gives you a new concept of comfort.

SHIFT TO FORDOMATIC—and you'll never shift again. It's the finest, most versatile automatic drive ever. And remember, Ford also offers the smooth and thrifty Overdrive.

POWER-PIVOT PEDALS—are suspended from above to eliminate dusty, drafty floor holes. They give more unobstructed floor space and provide easier pedal operation.

CENTER-FILL FUELING—prevents hose marks, and makes "filling up" easier from either side of gas pump. Shorter gas filler pipe gives you trunk space for an extra suitcase.

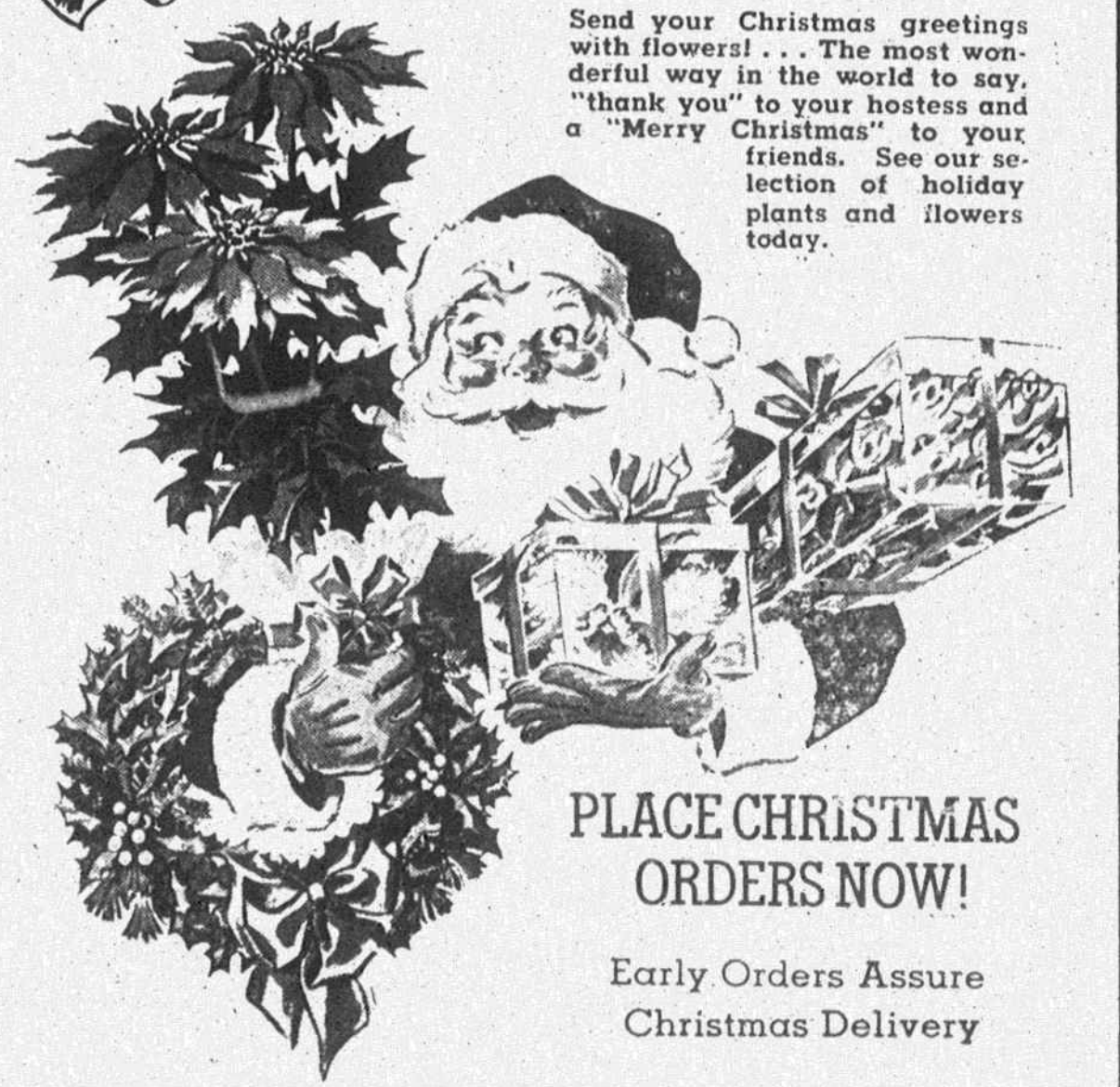
FULL-CIRCLE VISIBILITY—with huge, curved, one-piece windshield, a car-wide, one-piece rear window and big picture windows all around—gives you visibility unlimited.

Here now... the '53 FORD

PLONK MOTOR COMPANY

BATTLEGROUND AVE. PHONE 11

For a Festive Holiday Setting!



Send your Christmas greetings with flowers!... The most wonderful way in the world to say "thank you" to your hostess and a "Merry Christmas" to your friends. See our selection of holiday plants and flowers today.

PLACE CHRISTMAS ORDERS NOW!

Early Orders Assure Christmas Delivery

- Centerpieces
- Corsages
- Cemetary Designs
- Azaleas
- Cut Flowers
- Door Swags
- Potted Plants
- Begonias
- Poinsettas
- Dish Gardens
- Kalanchoes

You are cordially invited to see these displays in our showrooms...

Allen's Flower Shop

Member Florists Telegraph Delivery Service E. KING ST. • PHONE 361