



**JAYCEES LITTLE LEAGUE TEAM** — Pictured above is the Junior Chamber of Commerce team of the Kings Mountain Little League. Currently riding in last place in the loop, the Jaycees stomped Kiwanis 8-0 last Friday to help send the losers into second place in the standings. Players pictured above, left to right: are, front; Sammy Houston, Randall Parker, Roger Bollinger, Jerry Black, and Donald Parker; middle row, Gene Gibson, Mike Ware, Andrea Small, Jerry Proctor and Pete Small; and back row: Mike McKee, Don Gladden, Thomas Huffstetter, Don McKinney and Tommy Gamble. Coach Lewis Falls, right, is coach of the team and his son, Gregory, left, is mascot. (Herald photo by Carlisle Studio.)

### Avoid Summer's Boating Hazards By Heeding Common Safety Rules

Take a good supply of common sense along if you go boating this summer. This warning is issued by the Institute for Safer Living of the American Mutual Liability Insurance Company, which predicts a 1953 minimum of 2,864 drownings resulting from boat accidents by September 1. About 80 per cent of all drownings are caused

by boating mishaps, the Institute finds. A study of numerous boating accidents shows that most have one thing in common. One or more principles of common sense boating practice had been violated by the person responsible for the safety of the craft and its passengers. Boating and canoeing can be

enjoyed in safety if the following precautions are taken:

If the boat belongs to you, make sure that it is kept watertight and in safe condition. Don't use one that isn't in safe condition.

Know how to handle your boat safely under all conditions. Be prepared for the unexpected. Take along life preservers—even in row boats. Do not swim or dive from boats.

Learn the facts about unfamiliar waters such as depth, obstructions, current or tide conditions, and prevailing wind direction. Don't go far from shore in unsettled weather. Heed all storm warnings, and remember that squalls often strike with little warning.

Have proper respect for motor boats or larger craft that may be operating in your vicinity. Learn the "rules of the road" so that you will know what is expected of you in water traffic. Cooperate to avoid a collision.

Don't stand up in rowboats or canoes, and don't horseplay. Don't drink while out in a boat, especially if you are responsible for passengers safety.

When fishing, never allow the excitement of landing a big one to distract you from safe handling of the boat.

Small craft should not be overloaded. A good rule is not more than one person per seat. Keep the gunwale of a small boat at least 8 inches above water. Except in calm water, canoes should be paddled from a kneeling position—not from seat.

Don't get panicky if your boat should start capsizing in deep water. Usually it will not sink. Stay with it and hold on until help arrives. A capsized canoe may be overturned and hand paddled toward safety.

If someone should fall into the water from a small boat, the occupants should not try to get him back into the craft. Have him grasp the stern and tow him to safety.

A large share of this season's drownings have stemmed from violation of the above safe boating practices. Remember them, whether you paddle a canoe, row a boat, or pilot a cabin cruiser.

Tar Heel small grain farmers can obtain price support loans through the Commodity Credit Corporation.

Reports from North Carolina growers indicate that 4,200 acres of green peppers will be harvested this year, an increase of 20 per cent over the 3,500 harvested in 1952.

### Skin Care Advised In Summer Weather

Almost immediately, when you hear someone talking about "saving your skin" during the summer, you think of sunburn. But actually sunburn is but one of the hazards to beware of during the long summer months.

Vacationers, picnickers, and stay-at-homers, need to take note, says Ruth Current, state home demonstration agent. Poison ivy, and sumac are currently in season. Just a careless step through the woods can land you in bed with a good case of poison ivy. When you go for a walk, keep your legs covered and be on the look-out for these poisonous plants. It's a pretty good idea, too, to take a hot shower with plenty of soap after you come in from one of these wood excursions. Such preventative measures can save you a good deal of agony later.

Insects are another skin bugaboo. If you plan a picnic, be sure to take along a reliable repellent to ward off these "man-eating" intruders.

And sunburn, of course, takes heavy tolls every summer, says Miss Current. If you're a first-timer at the beach, lake, or even in your own back yard, take it easy. Remember that the burn rarely shows up until after you've gone in to cool off. And remember, too, that the sun's rays can be very penetrating even on the cloudiest days. Once you've been well-burned, there is very little you can do to bring relief. The best treatment for sunburn is to prevent it!



**GARDEN TIME**  
ROBERT SCHMIDT  
N.C. STATE COLLEGE

Are you getting tired of running the cultivator and wielding the hoe in your garden in a losing battle with weeds and grass? Why not use a mulch? It is surprising how few gardeners make use of mulches as an aid in the conservation of moisture and the control of weeds. A mulch may be any material such as hay, straw, strawy manure, leaves, leaf mold, peat, sawdust, pine straw, or paper which can be put down on the ground around the plants for the purpose of conserving moisture during the hot, dry summer weather. At the same time it will keep down most of the weeds. I recently read of one gardener who collected all the cardboard boxes he could get at the store, flattened them out, and put them on the ground around his plants as a mulch—and the results were excellent.

Many vegetables, flowers, small fruits and shrubs are good subjects for mulching. Tomatoes, peppers, eggplants and cucumbers may be mulched with straw, leaves or paper. Azaleas, camellias and blueberries which desire

straw or strawy manure. In all cases the mulch should be applied after the soil has been well moistened by rain or irrigation. If fertilizer is necessary it also should be applied before the mulch is laid down. You will find that in small gardens a mulch will help solve many of your cultural problems. The ruby-throated hummingbird beats its wings about 75 times a second.

**Don't NEED IT?**  
**SELL IT THRU THE**  
**HERALD**  
**WANT ADS**

## Need Money?

You can borrow here for family or business needs. There's a personal loan for every credit worthy purpose. Just choose the repayment plan that suits your budget. Come in today and consult one of our friendly financial advisers. They're always here to serve you.

## First National Bank

MEMBER FDIC

### NEWS of SERVICEMEN

#### IN KOREA

Pvt. Clyde H. Bush, son of Mrs. Virginia Bush, Route 2, Kings Mountain, recently joined the 25th Infantry Division in Korea. Bush, a rifleman in Company F of the 14th Regiment, last served at Fort Jackson, S. C.

He was employed by Neisler Mills, Inc. in Kings Mountain before entering the Army in December 1952.

Now the senior American division on the Korean peninsula, the 25th Infantry landed here in July 1950 shortly after the Communists launched their attack against the Republic of South Korea.

#### FROM KOREA

A/IC Samuel E. Crawford, son of Mr. and Mrs. Roy Crawford, has been assigned to the 2nd Aerial Port Operations Squadron at Sewart Air Force Base, Smyrna, Tennessee, after returning from Korea.

A/IC Crawford, who has been in the Air Force since March of 1950, served in Korea for a year. His address: A/IC Samuel E. Crawford AF 14403647 2nd Aerial Port Operations Squadron Sewart AFB, Smyrna, Tennessee.

The U. S. production, carryover, and imports of wheat this year add up to a total of 1,717,000,000 bushels, topping the 1942-43 record by 116,000,000 bushels.

## Check these reasons why Dodge trucks are your best buy!

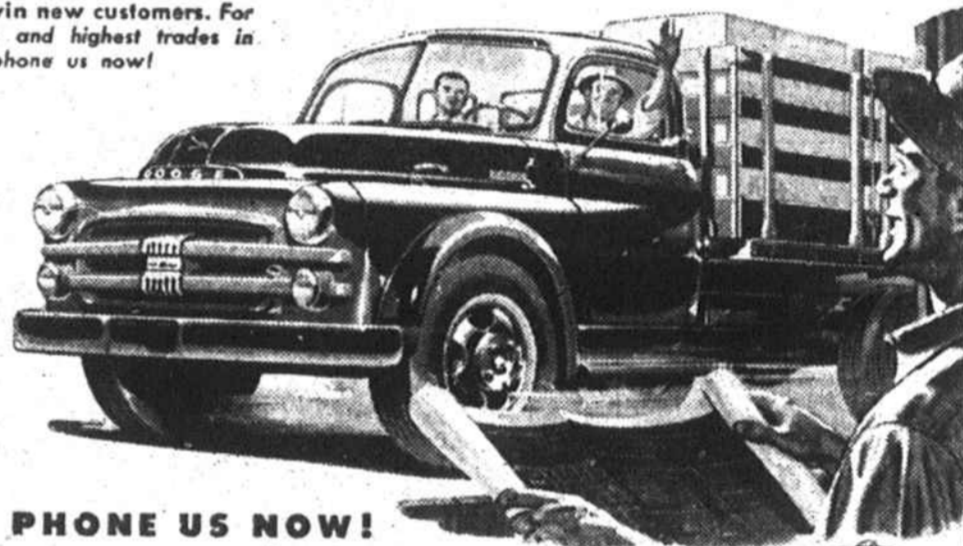
✓ Dodge gives you all the extra-value features shown at the right, plus lower-than-ever prices.

✓ Dodge power and maneuverability save time! Economical high-compression engines save gasoline! Rugged Dodge dependability saves upkeep.

✓ We're out to win new customers. For the best deals and highest trades in town, see or phone us now!

Dodge is the right truck!

Today is the right day!



SEE OR PHONE US NOW!

**DODGE "Job Rated" TRUCKS**

**MARLOWE'S, Inc.**

5007 E. KING ST.

#### PROOF THAT DODGE GIVES GREATER VALUE!

Most maneuverable! Dodge trucks turn shorter than other makes to save you time, money. Overflow shock absorbers on 1/2-, 3/4-, and 1-ton models for easier handling, smoother riding.

7 "Job-Rated" engines with 100 to 171 h.p. . . . 3 engines all-new. And of the leading makes, only Dodge gives you floating oil intake, exhaust valve seat inserts, 2 fuel filters, water distributing tube, 4-ring pistons, on all models.

More powerful 1/2- and 2-ton trucks than other leading makes.

Advanced dual-primary-type brakes in 1- through 4-ton trucks. Rivetless Cyclebond brake lining. Independent parking brake on all models.

Truck-o-matic transmission with glycol Fluid Drive, for lowest cost no-shift driving, available in 1/2-, 3/4-ton trucks. Fluid Drive offered in 1/2-, 3/4-, and 1-ton models for smoother traction. Both are Dodge exclusives.

More pick-up, express, and stake body sizes than other leading makes. New 1/2-ton pick-up with 56-cu.-ft. level load. Better balanced weight distribution for extra payload. Completely rustproof sheet metal for longer life. Best loading heights in the business.

Greater 1/2-ton-panel payload and cubic capacity.

NORTH CAROLINA

UNLIMITED



### SEA FOOD FOR SALE

In 1951 the total cash value of North Carolina's commercial fish haul was over 16½ million dollars. Modern refrigerated trucks and modern roads have brought prosperity to this industry and its people, to make their work and living in North Carolina more pleasant.

Another contributing factor to more pleasant living for North Carolinians is the brewing industry's self-regulation program where brewers, wholesalers and retailers—in counties where malt beverage sales are permitted under State control—cooperate to maintain wholesome conditions for the legal sale of beer and ale.

North Carolina Division  
UNITED STATES BREWERS FOUNDATION, INC.

THE BEVERAGE OF MODERATION



## WHETHER IT IS

Formulated Livestock and Poultry Feeds, basic Grains, Protein Concentrates, Vitamin and Anti-Biotic Supplements, Crushing and Mixing, or

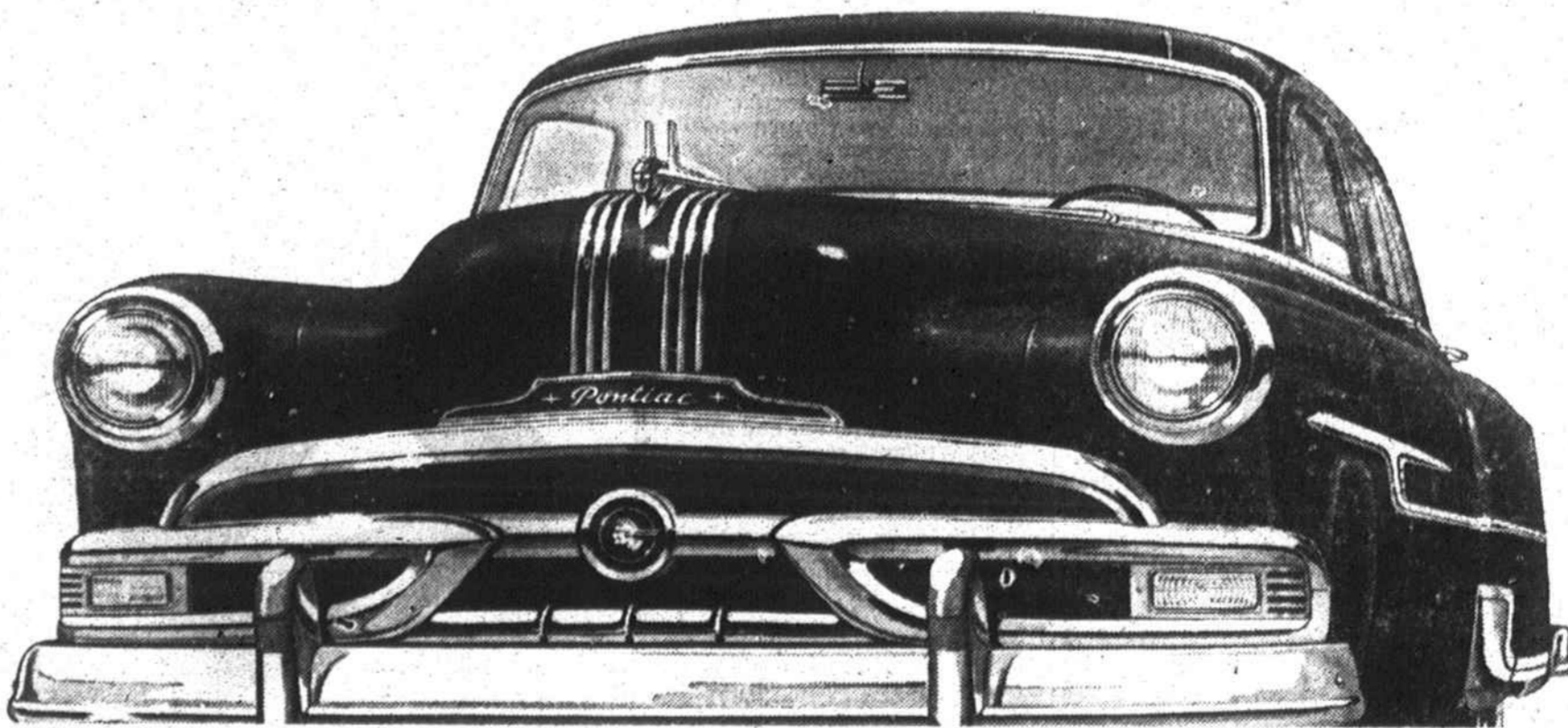
### PINNACLE BRAND FEEDS

SEE

## Ware & Sons

Kings Mountain, N. C.

# Nothing Like It for BEAUTY! PERFORMANCE! VALUE!



Dollar for Dollar you can't beat a

**Pontiac**

GENERAL MOTORS LOWEST PRICED RIGHT

Pontiac stands alone in its ability to match features and quality with the finest cars—at a price right next to the lowest.

Beauty-wise, Pontiac gets admiring glances everywhere, and this same fine styling carries through to its luxurious interiors.

Under the hood there's power to spare—and Pontiac handles so

easily, it's the closest you've ever come to effortless driving.

But Pontiac's greatest point of value is in its reputation for long life, dependability and economical operation.

In short, no car offers so much quality at so low a cost. A few minutes in our showroom and a few miles behind the wheel are all the proof you'll need.

**KINCAID PONTIAC COMPANY**

201 VIRGINIA AVE.

PHONE 9-2571

BESSEMER CITY