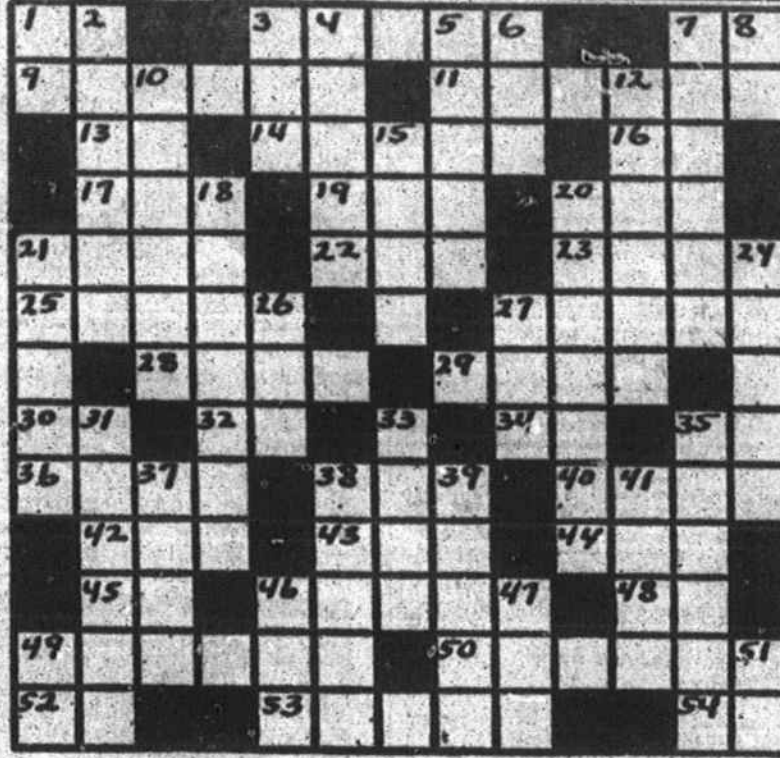


KINGS MOUNTAIN'S LITTLE LEAGUE TEAMS — Pictured above are the four teams making up the Kings Mountain Little League. At the upper left is the Park Grace team, loop champs, sponsored by Neisler Mills, Inc., and Park Yarn Mills Co. Members of the team are, front, left to right, Bobby Smith, Bobby Biddix, Jimmy White, Jerry (Mo) Wright and Sonny Jackson; middle, Kenneth Wilson, Buddy Kircus, Red Bowen, Jerry Morris and Billy Sellers; and back, Jimmy Medlin, Ricky Goforth, Freddy Foster, Bathys Larry and Harry Jackson and Coach Jim Dickey. The runner-up team from Phenix Plant, Burlington Mills, Inc., is at top right. Players are front, Douglas Worthen, Ronald Martin, Paul Hamrick, Paul Pitman and Larry Pearson; and back, Ronald Pearson, Don Tignor, Don Smith, Chalmers Johnson, Wiley Pitman and Coach Audley Tignor. James Robbs, Danny Egwell, Gene Huffstetter and Coach Leland Kindred were absent. The Jaycees finished in third place and are pictured at left below: front, Barry Gibson, Mike B. Ware, Frankie Franklin, Bill Small, Sam Houston and Ed Russ; and

back, Mike McKee, Steve Dalrymple, Punch Parker, Mike Ware, Jackie Thomasson and Coaches Bob Rosberg and Ralph Flow. Gene Gibson, Eric Yates and Allen Myers were absent. The Kiwanis club team is at bottom right: front, Ronnie Hord, Arnie Horn, Tony Hampton and Richard McDaniel; middle, Robin Whisnant, Don Horn, Steve Henderson and Robert Rudisill; and back, Paul Hendricks, Jimmy Plonk, Ted Ware and Coach Charles Painter. Oddie Byrd and Mickey Powers were absent. The league's all-star team, chosen two weeks ago to represent the loop in state and national elimination play, has been hard at work preparing for all-star play, slated to begin on Saturday. Members of the all-star team include Hendricks, McDaniel and Hampton, from the Kiwanis team; G. Gibson, Mike B. Ware, Punch Parker and Jackie Thomasson, from Jaycees; Tignor, D. Smith, R. Martin and R. Pearson, from Phenix; and Morris, Biddix, Wright, White, Jackson, Sellers and B. Smith from Park Grace. (Photo by Carlisle Studio.)

CROSSWORD By A. C. Gordon



- ACROSS: 1-Pronoun, 3-Popular "numbers" game, 7-Musical note, 9-Sports competitor, 11-Participants in a speedy contest, 13-Printer's measure, 14-One who carries the burden, 16-Chemical symbol for rubidium, 17-Short for ignition, 19-Born, 20-Baseball pitcher's bread-and-butter, 21-To stare, 22-Japanese coin, 23-Mops, 24-Water racing vessel, 27-Important part of horsing, 28-Social request to acknowledge an invitation, 29-Is a big athletic success, 30-Educational Society (abbr.), 32-Done, 34-Mean's nickname, 35-Public announcement, 36-Tourney for amateurs and professionals, 38-Frank's stroke, 40-Makes a baseball blunder, 42-Paid nation, 43-Numerical, 44-Shortened recreation, 45-In reference to, 46-First cousin of No. 3, 48-Exclamation, 49-Sports game, 50-Failed against an opponent, 52-Done, 53-Famous English district, 54-Prefix meaning "again", 5-Golfing goal, 6-Implement for watery sport, 7-Bridge's big cards, 8-Bats, 10-Fisherman, 12-Baseball bobble, 15-Elevates the golf ball, 16-Wrestling hold, 20-Into parts, 21-Combining form meaning "hous", 24-Juggles the entries in a sports tournament, 26-Leave (abbr.), 27-Desert, 31-Makes his mark in bowling, 32-Habit, 35-Competitor in a target game, 37-Paradise, 38-Relaxed, 39-Girl's name, 41-Position of the loser, 46-Oral part, 47-Oceans (abbr.), 48-Proposition, 51-Prefix denoting "down".

The Sporting Side

QUESTION: Is there a relationship between soil fertility and the type of weeds that grow on the land. ANSWER: Yes. For example, soil that is low either in phosphate lime will usually be covered with broomstraw. If the land is properly phosphated and limed and the broomstraw moved so as to reduce competition for soil nutrients, white Dutch clover and bluegrass will normally come in production without applying any seed to the land. More than one fertility factor can be responsible for this particular weed. Selecting land on the basis of the weeds growing on it may or may not mean that the soil is suitable for a particular crop. A soil test is your best bet.

QUESTION: What are the best breeds of turkeys to raise in North Carolina? ANSWER: Two of the best are the Broad Breasted Bronze and the Beltsville Small White. They are also the breeds most widely raised in this state. The bronze is a large bird with short legs, long, deep and broad body, with an exceptionally broad breast. The Beltsville white is small, but is an especially well meated bird. It is a natural for the small family, turkey fryers, and the retail trade. While the bronze is one of the most efficient users of feed, the Beltsville has advantages that offset this. There is no "best" variety. Select the variety that seems to do best for you, but keep the consumer in mind. You don't want to raise a bird you can't sell.



LITTLE LEAGUE LEADERS — The two players pictured above topped the Kings Mountain Little League in pitching and hitting this season. Bobby Biddix, left, son of Mr. and Mrs. Lester Biddix, took pitching honors with a no-hitter and two one-hitters in posting a 6-0 record and slugged the ball at a .604 pace to rank high among the hitting leaders in the loop. Jerry Morris, right, son of Mr. and Mrs. Earl Morris, also had a 6-0 pitching record and won the loop batting championship with a lusty .712 average for the season. He had 37 bingles in 52 trips to the plate. Both players were on the championship Park Grace nine and both are on the all-star team. (Photo by Carlisle Studio.)

June Arrest Total Of 81 Lowest Recently

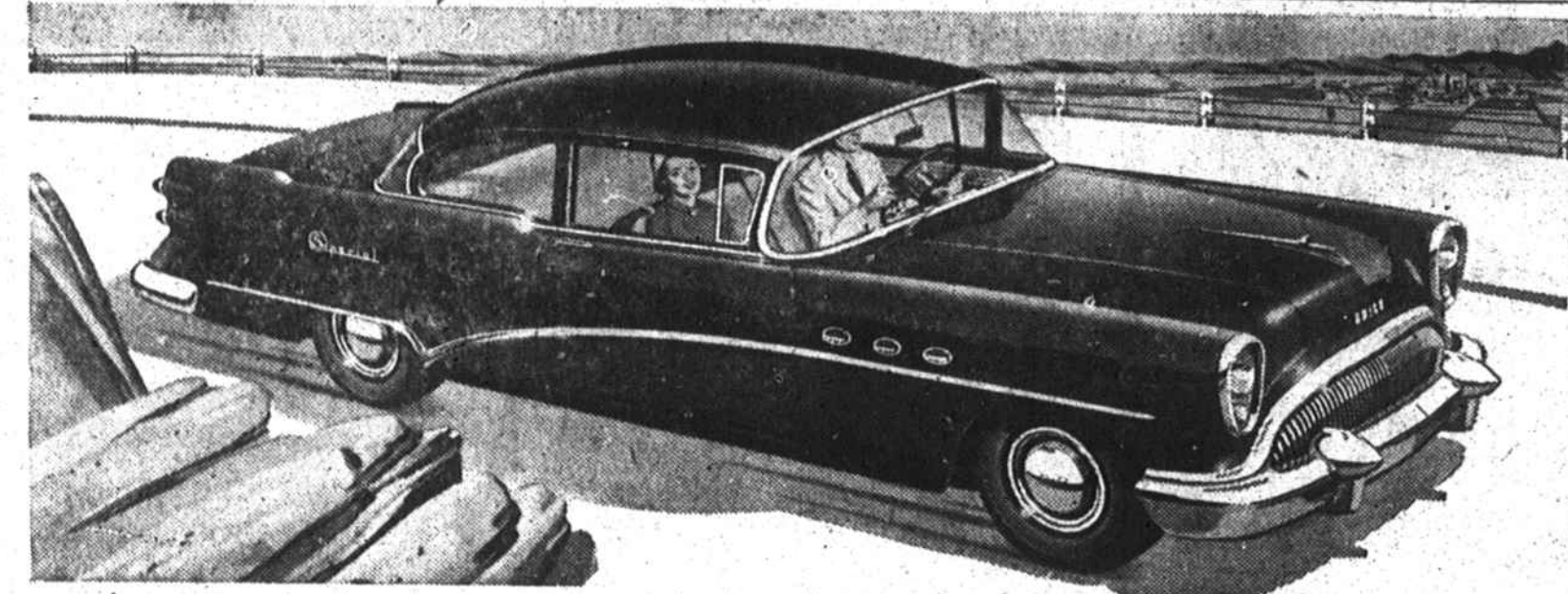
Kings Mountain police department reported 81 arrests for the month of June. The monthly figure was the smallest reported in many months. The report covers all lodgements at the city jail in June by city, county and state officers. Two arrests were processed at City Hall by State Highway patrolmen, four by county officers, and 75 by city officers. Public drunkenness accounted for about a third of the arrests with a total of 24. Seven arrests were made on other violations of prohibition laws and six were made for assault on a female. Five citations were issued, and five persons were arrested on charges of passing worthless checks. Speeding and larceny charges, with four arrests each, accounted for eight of the monthly total. Three arrests each were made on charges of driving without operator's license, participating in an affray, and for driving drunk. Eight violators, with two arrests on each count, were charged with reckless driving, resisting an officer, disposing of mortgaged property, and non-support. One arrest was made for firing a firearm within the city limits, assault on a minor, carrying a concealed weapon, damage to personal property, failure to pay

Luckenbach Rejoins Foote Mineral Firm

PHILADELPHIA, PA. — Fred Luckenbach, who played a major part in developing the lithium base grease market for Foote in the years 1941 thru 1947, rejoined the Foote Sales Department as of June 14, 1954. Luckenbach succeeds Fentress as Manager of Chemical Sales and is charged with the marketing of lithium hydroxide to the petroleum and allied industries. He will also handle the sale of special chemicals now under development. A graduate of Rutgers with a B. S. in chemistry, Luckenbach has been in chemical sales with Rohm and Haas, Virginia Smelting Company and Foote since 1937.

Mrs. Montgomery's Brother Succumbed

Funeral rites for B. A. Norman, 57, resident of route 1, Blacksburg, S. C., and brother of Mrs. D. J. Montgomery of Grover, were conducted Thursday at 4 p. m. from the Buffalo Baptist church. Mr. Norman died suddenly at his home Tuesday afternoon. He was a farmer and a member of the Buffalo church. Survivors in addition to Mrs. Montgomery include his wife, two daughters, a son, two additional sisters, and two brothers. a taxi fare, using profane language, forcible trespassing, driving a vehicle after license had been revoked, and AWOL.



Honey on Wheels
—and only \$2359.⁸⁸* buys it!

And get this — That's the local delivered price of the New Buick Special V8 2-DOOR, 6-PASSENGER SEDAN Model 48D (limo.) *Optional equipment, accessories, state and local taxes, if any, additional. Prices may vary slightly in adjoining communities due to shipping charges. All prices subject to change without notice. Even the factory-installed extras you may want are bargains, such as heater & defroster . . . only \$21.70.

looking beauty will stay in the style parade for seasons to come. (That means a better deal for you come resale time.)

Is it any wonder, then, that Buick now outsells all other cars in America except two of the so-called "low-price three"?

Come in for a demonstration — this week, for sure. And learn, in the doing, what a big trade-in allowance our volume sales can bring you.

Buick Sales are Soaring!

WHEN BETTER AUTOMOBILES ARE BUILT BUICK WILL BUILD THEM
DEAN BUICK COMPANY
184 Railroad Ave. KINGS MOUNTAIN, N. C. Telephone 238

—USE HERALD WANT ADS—

**New, bigger load space!
New, lower loading height!**



**New Chevrolet Trucks...
do more work per day... more work per dollar!**

You save on operating costs. The "Thrifmaster 235" engine, the "Loadmaster 235," and the "Jobmaster 261" (optional on 2-ton models at extra cost), deliver greater horsepower plus increased operating economy. You save extra trips. That's because of extra load space. New pickup bodies are deeper . . . new stake and platform bodies are wider and longer. You save time on deliveries. New truck Hydra-Matic transmission saves time and effort at every stop. Optional at extra cost on 1/2-, 3/4- and 1-ton models. You save with lower upkeep, too. There are heavier axle shafts in two-ton models, bigger clutches in light and heavy-duty models, stronger frames in all models. You save hours on the road. Thanks to new high-compression engine power, you can maintain faster schedules without driving at higher maximum road speeds. And your savings start the day you buy. Chevrolet, you know, is America's lowest-priced line of trucks. Come in and see all the wonderful new things you get in America's number one truck.

Now's the time to buy! Get our BIG DEAL! Save with a New Chevrolet!
VICTORY CHEVROLET COMPANY
24-HOUR WRECKER SERVICE CORNER MOUNTAIN & RAILROAD