

**HERALD MYSTERY FARM NUMBER 4** — Pictured above is the Kings Mountain Herald's Mystery Farm of the Week, an aerial photograph of a farm in the Kings Mountain area which is to be identified by readers of the newspaper. No one at the Herald, nor the photographers who took the picture, know the identity of the operator or the name of the above farm. Readers who wish to guess who operates Mystery Farm No. 4 are urged to notify the Herald — by phone or mail — by noon Saturday. All correct entries will be tossed into a hat and four names drawn for free tickets to Joy Theatre. The operator of the above farm will be given, absolutely free, a mounted photograph of his farm when he visits the Herald office to make positive identification. (Photo by Zekan-Robbins Co., Harlan, Iowa.)

## Interest Mounts In Mystery Farm Contest; 76 Identify Plonk Farm

Kings Mountain Herald readers had no difficulty in identifying Mystery Farm No. 3 as that of Clarence Plonk, Jr., route 3, Cherryville road. Only one incorrect entry was submitted.

The four lucky winners of the 76 correct guesses were Mrs. Nevette Hughes, route 2, Pat Davis, route 1, Mrs. Horace Bell, route 2, and Jerry Mullins, 109 Spruce st. This week's winners were drawn from the hat by Bill Myers

of the Herald Mechanical staff. Free admission tickets to Joy Theatre will be mailed to the four winners.

Other readers correctly identifying Mystery Farm No. 3 were: Lyvonne Lindsay, 610 W. Gold St.; Frances Bridges, 403 Gantt st.; Peggy Oliver, 606 Gantt st.; Nanaleen Todd, 707 Stone st.; Don Wright, railroad ave.; Bobby Sellers, 104 E. King st.; Roy Pearson, 803 Katherine st.; Billy Gene Spearman, Waco road; Hall Goforth, route 3; Linda Stewart, route 2; Marvin Goforth, route 2; Mrs. Jessie Waterson, 108 Tracy st.; Joyce Childers, route 2; Mrs. Juanita Seism, 200 Oriental ave.; Mrs. Ray Childers, route 2; Mrs. Lois Gallant, city; Linda Biser, 408 West Gold st.; Mrs. John Dilling, route 1; Mrs. C. T. Carpenter, Gold st.; Mrs. J. B. Plonk, route 3; Mrs. Ollie Harris, South Piedmont; Bill McDaniel, city; G. E. Bridges, city; Earl S. Spearman, route 2; Billy Childers, city; Ted Ledford, city; Wray Plonk, Jr., route 3; Mrs. J. T. McGinnis, Jr., 202 S. Sims st.; Richard Barnett, Lackey st.; Hazel Bollin, route 2; Red Morrison, Box 49; Jerry Wright, Baker st.; George Blacklock, 104 City st.; Miss Mary Boyce McGill, route 1; Miss Jeanene Hallman, route 1; Hugh Falls, route 3; Mrs. Fred Bridges, route 1, Box 58; James Adams, 312 E. Ridge st.; Garrison Goforth, Shelby rd.; Dean Payne, Box 642; Paul Neisler, 110 Gaston st.; Mrs. Dean Ramsey, 212 S. Piedmont; Mrs. J. W. Whitley, 108 Lackey st.; Wesley Moore, route 2, Park Yarn; Mrs. Frank Hamrick, route 3; Mrs. Jack Mull, Cleveland ave.; N. F. McGill, city; Mrs. Raymond Foster, route 3; Mrs. Paul Ledford, route 3; Lloyd Philfer, route 1; Dorse Whitesides, 403 Railroad ave.; Mary Owens, route 2; Gene Dye, route 2; Dennis McDaniel, route 1, Grover; W. E. Kuykendall, city; Mrs. Fred Hambrick, city; Thelma Dellinger, route 3; Mrs. W. F. McGill, route 1.

## FREE ESTIMATES INSULATION WEATHER STRIPING METAL AWNINGS ALUMINUM SCREENS DON CRAWFORD

Phone 607-J  
Representative of:  
Norman Harris & Son  
Shelby, N. C.

## KINGS MTN. COTTON OIL CO.

Hawthorne Rd. — Phone 124



## Feeds and Concentrates

Our job is SERVICE . . . helping you make low-cost balanced rations from your grain and 'SQ' CONCENTRATES. We are careful and our equipment does an accurate mixing job. We'll help you decide on the best formulas . . . proved and recommended by Spartan Research for poultry, dairy and hog rations. Stop in. Let's talk over your feeding problems.

"Researched-Feeds for the Southeast"



## Mrs. John Fulton With Red Cross

STRAUBING, GERMANY — Mrs. Marion Helen Fulton, daughter of Mrs. Eva M. Stefonic, of 517 C Street N. E., Washington 2, D. C., has recently been named chairman of Red Cross volunteers in the Straubing area. She is the wife of 1st Lt. John D. Fulton, commissary officer, of Kings Mountain, N. C.

In her new position, Mrs. Fulton will coordinate and develop Red Cross volunteer services for servicemen and their dependents in this area. Currently there are some 800 active Red Cross volunteers in the European theater. The Red Cross hopes to double that number in the coming year and to otherwise extend the service provided.

In addition to the Gray Ladies who serve in military hospitals, Staff Aides and Social Welfare Aides also are being trained to assist in Red Cross field offices. Instructors for dependent classes in home nursing, first aid and water safety are being certified, also.

Mrs. Fulton has previously served as a secretary in the Field Director's office at Fort Lee, Virginia.

## ASTC Alumni Will Organize

Alumni of Appalachian State Teacher's college, Boone, are being invited to attend an organizational alumni chapter meeting at Shelby high school cafeteria Monday night.

I. Ben Goforth, Jr., of Kings Mountain, made the announcement this week and said that all persons who had ever attended ASTC for either summer or regular term sessions, their husbands and wives were invited.

Supper will be served from 6:30 until 7 o'clock, and tickets may be purchased at \$1.25 per person

# Poll Shows Democrats Gain In Race For House Control

By Kenneth Fink, Director  
Princeton Research Service

PRINCETON, N. J. — How would the two major political parties stand in the nation if U. S. citizens were voting for Congressmen today instead of in November, 1954 — less than six weeks from now?

By a margin of six per cent, a cross-section of the nation's voters interviewed by United States Poll staff reporters say that if they were voting for Congressmen (House of Representatives) today they would favor the Democratic rather than the Republican Party.

Here are the figures that show present day Republican — Democratic strength across the nation: "If the elections for Congress were being held today, which party would you like to see win in this state — the Republican or the Democratic?"

The following table shows the results nationally, among those who had an opinion on the above question, or who, if undecided, stated toward which party they "leaned":

Democratic . . . . . 53%  
Republican . . . . . 47%

Fifteen weeks ago, the vote on the same question was Democratic 51.5%; Republican 48.5%.

Today's findings thus represent a 1.5 per cent gain for the Democrats.

from Mr. Goforth at his home, 604 W. Mountain st., or by telephoning 159-W.

Dr. D. J. Whitener, a member of the faculty of the history department of the college, will make the principal address.

The organization, Mr. Goforth added, will include alumni of the college in Polk, Rutherford, Gaston, and Cleveland counties.

Democrats and a 1.5 per cent loss for the GOP since early June.

A clearer picture of the situation can be had by examining the vote separately in the traditionally Democratic South on the one hand and in the areas outside the South on the other.

**South Only**

	Rep.	Dem.
1950 Election . . . . .	20%	80
1952 Election . . . . .	20%	80
TODAY . . . . .	20%	80

And here is the vote outside the South since 1950:

**Outside The South**

	Rep.	Dem.
1950 Election . . . . .	53%	47
1952 Election . . . . .	55%	45
TODAY . . . . .	50%	50

From the above, it can be seen that the big job facing the GOP in this year's Congressional Elections — the one that it faces in every Congressional Election — is that the Democrats can always count on a solid block of Congressional seats from the South. (In the past five Congressional elections, the Democrats have never lost more than 7 Congressional seats to the Republicans in the South and have always won at least 115 seats).

And today's findings give no indication that the South will be different this year.

This means the Democrats start with more than one-half of the 218 seats that they need to regain control of the House and that they need to pick up only one-third of the 313 seats outside the South to win.

Another important fact to be kept in mind is that only once during the 20th Century has the party in power increased its lead in an off-year election. That was in 1934, when the Democrats gained 9 seats.

It must also be understood that today's findings reflect sentiment for the nation as a whole. They cannot be applied to any single Congressional district.

Finally, it should also be kept in mind that today's findings reflect sentiment nearly six weeks in advance of the elections, and that much can happen between now and November.

The Herald presents the reports of the United Poll exclusively in this area.

Follow United States Poll reports in this newspaper every Thursday.

(Copyright, 1954, by Princeton Research Service.)

Prices of fed cattle are expected to continue close to the present levels the next few months with grass cattle prices probably to show the usual seasonal decline this fall.

## PRESCRIPTION SERVICE

We Fill any Doctors' Prescriptions promptly and accurately at reasonable prices with the confidence of your physician.

**Kings Mountain Drug Company**  
THE REXALL STORE  
Phones 41-81  
We Call For and Deliver

## Now COMPLETE Protection

## FOR YOUR OIL STORAGE TANK

The storage tank that holds your heating oil should be protected from rust inside. Shell Sonitor is the answer. A few ounces of Sonitor in your tank is all you need to protect it against corrosive attack by moisture, which normally accumulates in the bottom. Rust prevention also avoids the danger of burner nozzle clogging by rust particles. We'll be glad to treat your tank with Sonitor free of charge when you buy Shell Furnace Oil.



LET US FILL YOUR TANKS NOW! BE READY.

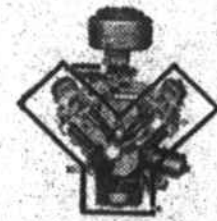
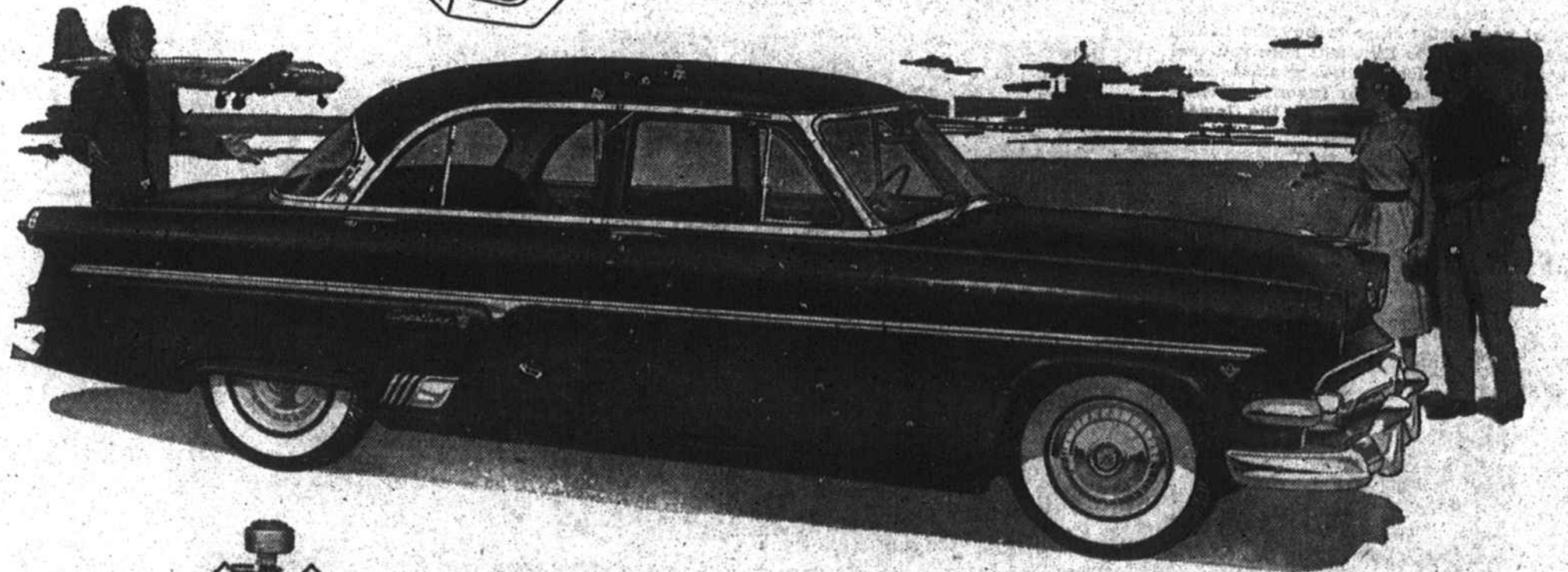
**Fred Plonk Oil Co.**  
Grover Rd. Phone 936

SUBSCRIBE TO THE HERALD

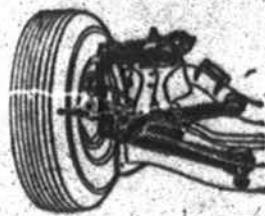
Get the things that make a fine car fine



...at low cost!



Only V-8 engine in the low-price field



Only Ball-Joint Suspension in the field

We can show you a Ford model that gives more of the things you want and need for less money than you ever dreamed possible, because Ford offers you 14 body styles to choose from—one of which will suit you to a "T."

Ford offers a choice of the two most modern engines in the industry—a 130-h.p. Y-block V-8 or a 115-h.p. I-block Six. And Ford also brings you new Ball-Joint Front Suspension—a Ford exclusive that gives you the easiest handling and smoothest ride you've ever experienced.

As optional extras, you can have the finest in power assists to take the work out of all your driving.

All of these things that make a Ford worth more when you buy it and while you own it also make Ford hang onto its value better than any competitive car! Surveys prove it.

Take a Test Drive in a Ford. It will cost you less than you think to drive it home.

See us now . . . we're trading the highest ever . . . because we're selling the most ever!

Choice of engines—the new 130-h.p. Y-block V-8 and 115-h.p. I-block Six. Both offer smoothest, quietest performance . . . "Go" at all speeds.

Ball-Joint Front Suspension eliminates kingpins for easier steering . . . cuts front end wear points from 16 to 4.

Three complete lines—Ford's range of Crestline, Customline, and

Mainline models makes sure that one will fit your needs and pocketbook.

28 models to choose from—14 body styles including four station wagons—three Fords—two Tudors!

Five power assists—as optional extras: Master-Guide Power Steering, Swift Sure Power Brakes, Power-Brake Windows, a 4-Way Power Seat, and Fordomatic Drive.

**PLONK MOTOR COMPANY**

S. Battleground Ave.

PHONE 138

KINGS MOUNTAIN, N. C.

If You're Interested in an Used Truck—Be Sure to See Your Ford Dealer