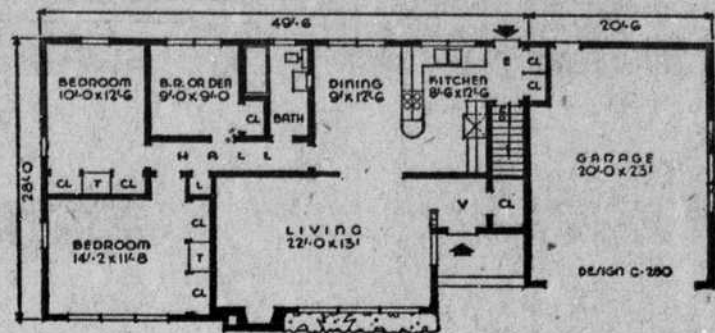


— HERALD HOUSE OF THE WEEK —



A SMALL HOUSE PLANNING BUREAU DESIGN NO. C-280



DESIGN C-280. This ranch type house has a large living room with fireplace and picture window, connected to dining room by means of modern-fold doors.

Exterior finish includes stone chimney and planting area, vertical redwood in the entrance recess, shingle siding and asphalt shingle roof.

Storage space consists of wardrobe closets with built-in trays in the large bedrooms, linen cabinet, walk-in vestibule closet and coat and supply closets in the rear entry.

For further information about DESIGN C-280, write the Small House Planning Bureau, St. Cloud, Minn.

U. S. Poll Has Accurate Record

PRINCETON, N. J. — With the 1954 nationwide official Congressional returns in, the United States Poll has again lived up to its reputation as one of the nation's most accurate public opinion barometers.

A comparison of the final United States Poll Congressional Predictions with the official November 2, 1954, vote shows:

Table with 3 columns: Prediction, Vote, Deviation. Rows for Dem, Rep, and Major party vote.

tion returns show that the United States Poll predicted the Democratic and Republican Congressional vote in the nation within seventy-two hundredths of one per cent.

Here is the United States Poll's record on nationwide predictions: In the November, 1952, elections, the U. S. Poll made two predictions on nationwide elections — the 1952 Presidential and Congressional Elections.

Both predictions were correct as to winners and standings.

The official returns showed that the U. S. Poll predicted the Eisenhower vote in the nation within 4.3%; that the average deviation on the three Presidential predictions came within three per cent, and within 4.4% on each individual prediction.

As a matter of record, Princeton Research Service's United States Poll was the only major poll in the country to flatly predict Eisenhower.

The 1952 official returns also showed that the U. S. Poll predicted the Republican and Democratic Congressional vote in the nation within three-tenths of one per cent — twenty-seven hundredths of one per cent to be exact.

Both predictions were correct as to winners and standings. The official returns showed that the U. S. Poll predicted the Eisenhower vote in the nation within 4.3%; that the average deviation on the three Presidential predictions came within three per cent, and within 4.4% on each individual prediction.

Sgt. Hugh Gamble Now In Tripoli

TRIPOLI, LIBYA — T/Sgt. Hugh Gamble of Kings Mountain, N. C., is now serving with the U. S. Air Force at its base here.

Sgt. Gamble has a total of 15 years of armed forces service, seven years in the army and eight in the air force, including duty in the Korean War and in Japan. He has served for four years as an engineer on a B-26. He is a veteran of World War II.

He is the son of Joe Gamble, E. Gold street.

Based upon past harvest reports from growers and late season sales data, production from the 1954 flue-cured tobacco crop in North Carolina is now established at 913 million pounds.

Sanitation Body Commends City

E. C. Hubbard, executive secretary of the State Board of Health's Stream Sanitation committee, has commended the city for its McGill Creek sewer plant project, now under construction.

In a letter to Mayor Glee A. Bridges, Mr. Hubbard, wrote recently:

"At the recent meeting of the State Stream Sanitation Committee held in Raleigh, North Carolina, on December 14, 1954, the Committee reviewed and approved the 'Certificate of Approval' covering the proposed new sewage treatment plant to serve the southeast section of Kings Mountain and the discharge of the plant's effluent into McGill's Creek which was issued to the City of Kings Mountain under date of October 1, 1954.

"In taking this action, the State Stream Sanitation Committee requested that I write you expressing its appreciation to you and the City Board for your cooperation in the development of plans for proper and adequate sewage and waste treatment facilities to serve the southeast section of the City and to improve the quality of waste in McGill's Creek below your plant. The Committee also asked that the City of Kings Mountain be commended for the progressive leadership exemplified by the efforts on the part of you and your Board to provide a modern sewage and waste treatment plant to serve your City. It is requested that you present this letter to your Board at its next meeting."

Smith Promoted To Second Class

PACIFIC FLEET (FHTNC) — George Smith, son of Mr. and Mrs. Baxter R. Smith, of Route 2, Kings Mountain, N. C., and husband of the former Miss Lavaghn Rials of Brook Haven, Miss., have been advanced to boatswain's mate second class, USN, while serving aboard the attack cargo ship USS Merrick here.

Smith, who has served for 30 months aboard the Merrick, enlisted in the Navy in April of 1952.

The canary, the most popular of all bird pets because of their lovely singing, received their name from the Canary Islands, off the Northwest Coast of Africa, where they were once wild; so states the WORLD BOOK ENCYCLOPEDIA.

LETTER TO THE EDITOR

The Editor:

You are no doubt aware that the question of America's foreign trade policy is high up on the order of business for the new Congress. This is certain to involve the subject of tariffs once again.

We call your attention to this matter because we believe you will agree that the interests of our community are directly related. A trade policy which could cause loss to the textile industry and other small-business type industries must inevitably have adverse effect on a community like ours.

The present situation is critical. Negotiations will begin at Geneva in February to arrange direct concessions to Japan on practically all textile goods, numerous apparel items and a long list of products made by other small-business industries. In addition, the Congress is being asked to authorize a further round of sweeping tariff reductions over the next three years.

The textile industry knows from bitter experience what volume imports of Japanese goods can do to American mills. They disrupt markets, upset price levels, create uncertainty and, as in the 1930's, cause mill closings and unemployment. It is important to realize that right now a large-scale surge of Japanese imports into the United States is taking place. It compares to the disastrous inflow of 1936-38, which was checked only when the then Secretary of State Hull took emergency action to increase customs duties.

The reason why foreign goods pose a serious threat is clear. American efficiency, while high and kept at a peak by domestic competition, is not expandable at will; it cannot bridge the gap between American production cost and those of foreign countries which are three, ten or twelve times lower. Unlike other large American industries, we have no patents or processes peculiarly our own. Foreign industries can and do use the same machinery that American mills use. They get raw materials at the same price. This means that the only real area of competition is in labor costs, which in Japan are only one-tenth the U. S. rate.

No one can estimate the amount of damage in store if the U. S. government continues the trade policy it inherited from the World War II and postwar era. We see no chance at all of avoiding injury, however, unless the policy makers can be aroused to a new outlook and new approach.

The payrolls, business, and purchasing power of this community, as well as tax revenues of federal, state and local governments stand to suffer comparably. For this reason we urge your interest in the need for maintaining what tariff protection is left.

We in our industry are making every possible effort to turn the attention of U. S. policy away from the tariff "bogyman" to the real causes of sick world trade.... money controls, embargoes and similar barriers to

Police Report Minor Mishaps

Several auto accidents were reported by Kings Mountain police department occurring within the city limits last week.

Two cars, a 1940 Mercury Sedan four-door and a 1950 Hudson four-door collided at the intersection of Cleveland ave. and Ridge street. The accident, which involved cars driven by William M. Herndon, of 1108 Battleground ave., and George L. Rector, of route 4 Marion occurred Saturday around 5:50 p. m. Property damages sustained as a result of the accident, which was investigated by Officers Paul Sanders and S. R. Davidson, were estimated to total \$300.

An accident Friday, around 8:20 p. m., was reported to have occurred on Piedmont ave. A 1954 Ford, driven by Samuel Steveson Carroll, of route 1, and a 1946 Desoto driven by Thomas Troy Davidson, of 14 Warren road, Baltimore, Maryland, were involved. The accident report stated that both cars were traveling south on Piedmont ave. and collided when the Desoto made an attempt to pass the Ford on the right side of the road. The Ford was also attempting to make a right turn off Piedmont ave. The accident, with property damages estimated to total \$105, was investigated by Officers Paul Sanders and Jack Stone.

Thursday, around 1:30 p. m., a vehicle driven by Neely Steele, of 1216 Oakland street, Charlotte, backed into a parked car owned by Rufus E. Fite, of 810 Cleveland ave. The accident occurred in the parking lot behind Fite's Shoe Shop. Property damages were estimated to total \$25. Officers P. A. Hawkins, and R. G. Ware were investigating officers.

commerce that are diverting textiles and other essential goods from the peoples and regions in greatest need. If this can be done, and Congress insists on this kind of trade program, the world-wide demand for goods will keep all spindles and looms everywhere busy for a long time to come.

Sincerely,
George H. Mauney

PRESCRIPTION SERVICE

We Fill any Doctors' Prescriptions promptly and accurately at reasonable prices with the confidence of your physician.

Kings Mountain Drug Company THE REXALL STORE Phones 41-81 We Call For and Deliver



HINTS TO HOMEMAKERS

Miss Ruth Currier, State Home Demonstration Agent

GETTING ACQUAINTED — Would you like to become better acquainted with some of our world neighbors? Then learn something about the everyday customs, music, government, language and food from other countries. Treat your family and friends to a United Nations dinner. Typical foods from one or more nations will make up the menu.

Choose your menu from recipes found in cook books, magazines, or newspapers. Better still get your recipes from natives of other countries living in your community. They will probably be pleased to tell you about food customs in their home land and perhaps prepare one or more dishes for you. Take this opportunity to learn more about that country and the purposes of the "The World's Favorite Recipes" is a cook book put out by the United Nations committee. It has over 100 tested recipes from other nations. "To take dishes from every country in the world into our kitchens, is, in itself, one of the ways to bring about better international understanding. This really brings us close to the daily life of families of other nations," says Mrs. Eleanor Roosevelt in the foreword of this book.

You might follow the same idea for refreshments when the club meets in your home — hot chocolate the Mexican way, tea made the English or Chinese way served with Scotch Scones or a cookie typical of some other nation.

A GLASS OF MILK IS A BETTER BUY THAN EVER!



Sunrise Dairy

DIAL 6354

GASTONIA

WE'RE PUTTING IT "RIGHT ON THE BARRELHEAD"



IT TAKES FAITH in the future to put this kind of "cash on the barrelhead" so that the Southern can keep pace with the fast-growing industrial South.

For many millions of dollars are involved when we buy locomotives and cars... build or modernize yards; and other facilities. Conditions must be anticipated for years ahead... large commitments must be made far in advance. Then—somehow—the money must be found to meet these obligations.

Since 1945, the Southern Railway System has spent more than \$327 million for major improvements. Some of this money came out of earnings. The rest we borrowed. But earned or borrowed, every dollar we committed ourselves to spend represented our faith in the future of the South we serve.

With this same faith—and without being subsidized by tax dollars as are other transportation agencies—we are continuing to build today for the still brighter "tomorrow" that surely lies ahead for the Southland.



Henry A. Roberts President

SOUTHERN RAILWAY SYSTEM

WASHINGTON, D. C.

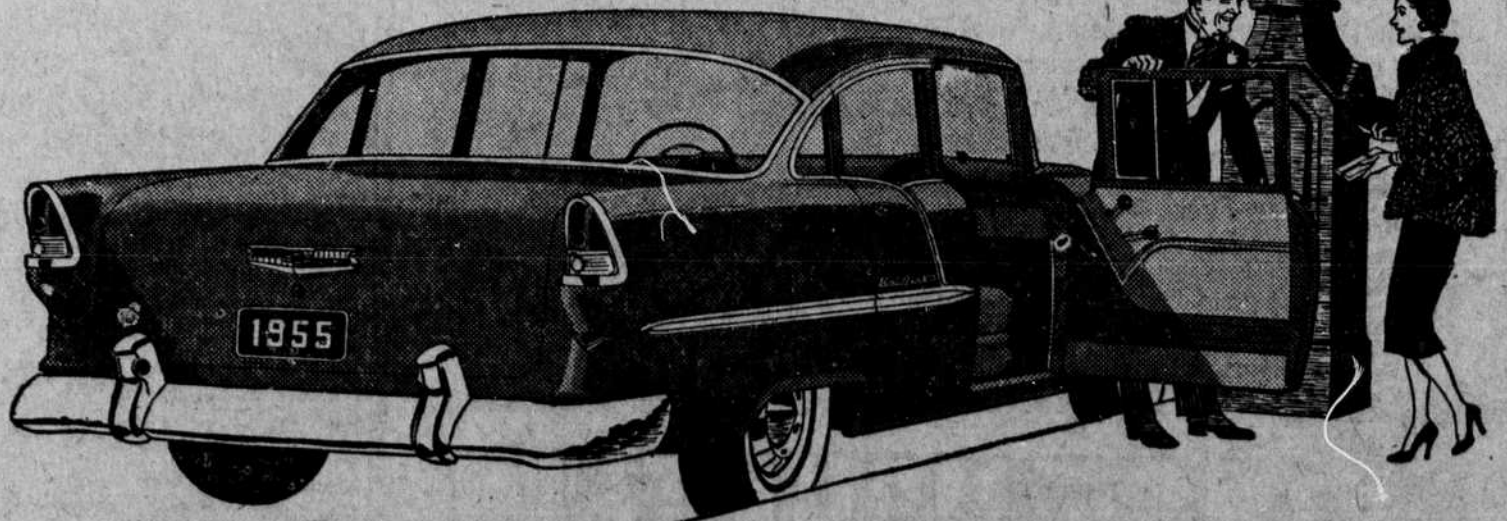
Styling that's stealing the thunder from the high-priced cars!

The styling spotlight blazes down on a low-cost car this year—for the Motoramic Chevrolet is stealing the show from the high-priced cars with its subtle sweep of line, the brilliant sophistication of its European-type grille, the bold rake of its deep-curved windshield.

And there's even more excitement in the way it drives—the velvety comfort of Glide-Ride front suspension and outrigger rear springs, the handling ease of Ball-Race steering, the flashing performance of the new 162-h.p. "Turbo-Fire V8"

engine or the two new "Blue-Flame" 6's. All this—plus the extra-cost options of Powerglide or Overdrive and a full range of power assists. Try a 1955 Chevrolet—now—and you'll know why it is stealing the thunder from the high-priced cars.

MORE THAN A NEW CAR... A NEW CONCEPT OF LOW-COST MOTORING



The Bel Air 4-Door Sedan

Everything's new in the motoramic CHEVROLET

VICTORY CHEVROLET COMPANY

24-HOUR WRECKER SERVICE

CORNER MOUNTAIN & RAILROAD



It's a perfect gem to look at!

And it's powered to run rings around the rest!