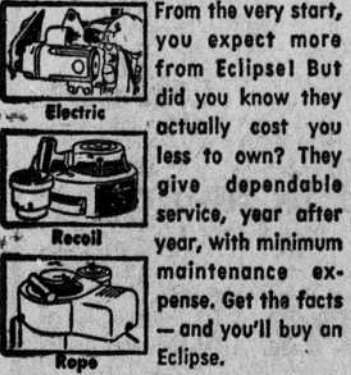


Expect Eclipse
to—START EASIER
—LAST LONGER



Choice of 3 Starters



From the very start, you expect more from Eclipse! But did you know they actually cost you less to own? They give dependable service, year after year, with minimum maintenance expense. Get the facts—and you'll buy an Eclipse.

Priced From \$87.50

PHIFER HARDWARE CO.
221 Battleground Ave.
Phones 46 or 700

Seeing is Believing

A MAN WITH A NEARSIGHTED STARE BROKE HIS GLASSES TEN MILES FROM NOWHERE. AS HE STRUGGLED TO DRIVE, HE SAID, "IF I'M ALIVE, IN THE FUTURE I'LL CARRY A SPARE."



HUNDREDS OF HUNTERS ARE KILLED OR SERIOUSLY WOUNDED EVERY YEAR DUE TO THE POOR EYESIGHT OF OTHER HUNTERS.



THE GOLD-FILLED METAL USED IN SPECTACLES MUST PASS A RIGID DURABILITY TEST.

LONG AGO SPECTACLE MAKERS SMASHED INFERIOR GLASSES AGAINST LONDON STONE. TODAY 98% OF THE ORIGINAL "MIX" FOR SPECTACLE LENSES IS DISCARDED, SAYS THE BETTER VISION INSTITUTE.

Insurance Deadline On 1956 Cotton Is April 10, FCIC Reminds Farmers

The Federal Crop Insurance Corporation of the U. S. Dept. of Agriculture has announced through its office for Cleveland County that April 10 has been designated as the closing date for taking applications for all-risk insurance on the 1956 cotton crop.

The Federal Crop Insurance Corporation is a non-profit organization authorized by Congress for the purpose of stabilizing farm income through all-risk insurance which is not available from private insurance companies. It protects the farmer's investment in growing cotton against loss of production from all weather hazards and unavoidable causes such as cool weather at planting time, too much rain, unavoidable boll weevil and insects, hail, disease, frost, drought, etc.

The insurance program was formerly administered by the P. M. A. office, however, it now operates as an independent agency.

The office for Cleveland County is located in Lincolnton. In the counties points-of-contact are maintained where farmers can

contact experienced crop insurance men in local communities. Points-of-contact for Cleveland County are: Max Cornwell near Double Shoals, Wayne Barrett at Waco, Bert Canipe near New House, E. G. Clark of Route 1, Shelby, Lyman Humphries in No. 1 Township, John D. Sain at Toluca and Stough Wright at Gro-

ver. The program operated under rules set up by Congress and in the counties in this area notification has been received that April 10 is last date farmers can make application for this insurance for 1956. Many farmers are still undecided about their 1956 cotton acreage due to the

soil bank and other problems. For this reason the acreage reports, which determine the amount of insurance premium, are being delayed until after planting. However, applications for the insurance have to be made by April 10.

SUBSCRIBE TO THE HERALD

A&P Showers Savings on You During its

Spring Food Festival

- Thank You Brand
Cherry Pie Filling No. 2 29c
Good Quality Flaked Sultana Tuna Fish 2 6 1/2-Oz. Cans 39c
Good Quality Short Grain Sultana Rice 3 Lb. 37c
Reduced - Worthmore Candy Royal Lustres . . . 14-Oz. Pkg. 19c

- White House Brand
Evaporated Milk . 5 1 1/2-Oz. Cans 59c
"Our Finest Quality" A&P Grape Juice . 24-Oz. Bot. 27c
"Our Finest Quality" A&P Apple Sauce 3 No. 303 16-Oz. Cans 35c
Salisbury Krey Beef Steaks . 12-Oz. Can 37c

An A&P Exclusive
WOMAN'S DAY
MAGAZINE
April Issue
Per Copy **7c**



- Texize Products**
Laundry Bleach 2 Qt. 29c
Cleaner Household Pl. 39c
Pine Oil Cleaner 39c
Floor Cleaner 69c
Liquid Starch 19c
Transparent Starch . . . 23c
Permanent Resin Starch 37c

- HEINZ PRODUCTS**
Tomato Ketchup 14-Oz. Bot. 25c
Chili Sauce 12-Oz. Bot. 37c
57 Sauce 8-Oz. 29c
Worcestershire Sauce 6-Oz. Bot. 29c

- Wonderful Flavor Drink
Hi-C Orange 46-Oz. Can **25c**
REDUCED! Sunnyfield in 1/4-Lb. Prints Creamery
Butter 1/2-Lb. Pkg. **33c** 1-Lb. Ctn. **63c**
REDUCED! Assorted Sunnyfield

- Cereals** INDIVIDUAL PACKAGES Tray Each **25c**

- Beef Stew** 2 16-Oz. Cans **65c**
Pickles BREAD AND BUTTER 15-Oz. Jar **19c**

- LIBBY'S MEATS**
Deviled Ham 3-Oz. Can 17c
Corned Beef Hash . . . 16-Oz. Can 29c
Potted Meats 2 3 1/2-Oz. Cans 17c
Vienna Sausage 4-Oz. Can 17c
Corned Beef 12-Oz. Can 45c
Roast Beef 12-Oz. Can 47c
Vienna Sausage With B.Q. Sauce 5-Oz. Can 19c

"SUPER-RIGHT" meats

- "Super-Right" Heavy Western Grain Fed Beef - Boneless
Chuck or Shoulder Roasts 1-Lb. 49c
"Super-Right" Heavy Western Grain Fed Beef
Ground Sandwich Steaks 1-Lb. 49c
"Super-Right" Heavy Western Grain Fed Beef
Lean Boneless Beef Stew 1-Lb. 45c
Swift's
Premium Sliced Bacon 1 lb. **39c**
"Super-Right" Center Cut Rib
Fresh Pork Chops 1-Lb. **49c**
"Super-Right" Loin End
Fresh Pork Roasts 1-Lb. **33c**

- All Meat Franks** 1-Lb. **39c**
"Super-Right" Sliced
Boneless Cooked Ham 6-Oz. Pkg. **53c**
"Super-Right" Sliced
Pickle & Pimento Loaf 6-Oz. Pkg. **19c**
Dry Salt
Fat Backs 1-Lb. **13c**

- Headless and Dressed
Whiting
5 Lb. Box **69c**
Cap'n John's Precooked
Fish Sticks 10-Oz. Pkg. **29c**

BIG BEAN SALE

- Sultana
Pork & Beans 4 FOR **39c**
Sultana
Blackeyes 1-Lb. Cans
Ann Page with Chili Gravy 1-Lb. Cans
Red Beans
Sultana Salad Dressing Qt. **35c**
Ann Page Mayonnise Qt. **49c**
Ann Page Spaghetti Cooked 7 15 1/2-Oz. Cans **25c**

- SPECIAL! Delicious Jane Parker**
Strawberry Pies Each **49c**
SPECIAL! Filled with Raisins Jane Parker
Spanish Bar Cake Each **29c**
Jane Parker - Enriched
White Bread 1-Lb. Loaf **14c**
Jane Parker - 100% Whole
Wheat Bread 2 1-Lb. Loaves **25c**

Save on Fresh FRUITS & VEGETABLES

- Fresh Golden
Carrots 2 Lb. Bag **15c**
Young Golden
Fresh Corn 4 Ears **29c**
Makes Colorful Salads - Fresh Florida
Grapefruit 8 Lb. Bag **33c**
Large Firm Crisp
Fresh Lettuce 2 Heads **25c**

- Crisp Large Stalks
Celery No. 2 1/2 Stalk **12c**
Crisp Regalo
Slaw Mix Cello Pkg. **15c**
Flavorful Yellow
Onions Lb. **5c**
Extra Fancy - Winesap
APPLES 4 Lb. Bag **45c**
Golden Yellow Sweet
Potatoes Lb. **8c**

Fine Frozen Foods

- Seabrook Farms Green Peas 10-Oz. Pkg. 19c
Seabrook Farms Peaches 12-Oz. Pkg. 20c
Minute Maid Orange Juice 2 Cans 37c
Minute Maid Grapefruit Juice . . . 2 6-Oz. Cans 27c
Minute Maid Lemonade 6-Oz. Can 15c
Scotch Maid French Fried Potatoes 2 9-Oz. Pkg. 27c
Scotch Maid Cut Corn 2 10-Oz. Pkg. 27c
Scotch Maid Baby Limas 2 10-Oz. Pkg. 35c



These Prices Effective Thru April 7th.

LETTER TO THE EDITOR

Dear Sir:
The support which your paper gave to our recent campaign was a very important factor in the success of the 1956 heart fund drive. We have always regarded our annual campaigns as an opportunity to reach a broad public with the facts about heart disease. Obviously we could not accomplish this educational purpose without your help, and you are rendering an important public service.

Of importance to us, also, is the backing up of our many thousands of volunteer workers, who give so freely of their talents to a cause they consider worthy. "Names make news"—and it is human nature for people to enjoy some public recognition of their community services. By covering their activities you encouraged them to carry out their work more effectively. Finally, of course, you helped alert the public to the needs of heart research contributions for this essential part of our program. Research scientists right here in North Carolina, as well as other parts of the country, may now expand their studies of the causes of heart disease and draw nearer the ultimate goal: prevention of this crippling and killing disease. From their labors, hope radiates for all heart patients everywhere.

"Thank you" seems small return for what you have given to the cause of Heart. We trust that your real reward lies in the satisfaction of having made an important contribution toward the better health of your community.

Sincerely,
W. D. Charnichael, Jr.
State Campaign Chairman

NORTH CAROLINA CLEVELAND COUNTY NOTICE

Under and by virtue of the power of sale, contained in a certain deed of trust, executed by Walter W. Huffstickler and his wife, Mary Grace Huffstickler, to the undersigned Trustee, dated the 19th day of April, 1950, and recorded in Book 346 at Page 341, in the office of the Register of Deeds of Cleveland County, North Carolina, default having been made in the payment of the indebtedness thereby secured, and the said deed of trust being, by the terms thereof, subject to foreclosure, under the authority vested in the undersigned Trustee, and the holder of the indebtedness thereby secured, having demanded a foreclosure thereof for the purpose of satisfying said indebtedness, the undersigned Trustee will offer for sale, at public auction to the highest bidder, for cash, at the Court House Door in Shelby, North Carolina, at 12:00 Noon, on the 9th day of April, 1956, the land conveyed in said deed of trust, same lying in the Town of Kings Mountain, Cleveland County, North Carolina, and more particularly described, as follows:

BEGINNING at a stake in the Southerly margin of Mauney Street, situate 640 feet in an Easterly direction measured along the Northeastly corner of Lot No. 57, as shown on map which is recorded in Plat Book 3 at page 30, of the Cleveland County Registry, and running thence from said stake, with the Easterly line of Lot No. 57, South 2 degrees 56 minutes West 237.5 feet to an iron stake; thence North 87 degrees 48 minutes East 69 feet to an iron stake; thence North 2 degrees 56 minutes East 237.5 feet to an iron stake in the Southerly margin of Mauney Street; thence with the Southerly margin of Mauney Street, South 87 degrees 48 minutes West 69 feet to the BEGINNING. Being the full contents of Lots 56 and 55, and a part of Lot 54, as shown on map hereinabove referred to. This 8th day of March, 1956.
J. A. Wilkins, Trustee
3:15 - 4:5

ARE YOUR CHILDREN COUNTING ON A COLLEGE EDUCATION?



YOU can count on LIBERTY LIFE INSURANCE to provide it

Never before has a college education meant so much—or cost so much.

A Liberty Life policy can provide the money you need to educate your children... and, at the same time, give financial protection to the entire family. Ask your Liberty Life representative for complete details without obligation.

Remember—the sooner you start, the more college insurance you can buy for your children!

YOURS FREE!

You'll find many helpful suggestions in the new booklet, "Your Life Insurance—and How to Use It," which the Institute of Life Insurance has prepared. Your free copy will be sent promptly—simply mail your name, address, and age on a postcard to Liberty Life today.

G. W. HAMPTON
Manager
Kings Mountain Branch Office
Morrison Building, Battleground and Gold Streets

LIBERTY LIFE
INSURANCE COMPANY
Greenville, South Carolina
FINANCIAL FREEDOM FOR THE FAMILY

"When someone's counting on you—you can count on life insurance."

Shopping Starts
IN THE PAGES OF
this Newspaper