



Pat's Peckings

By NEALE PATRICK

Mountaineers Met Toughest First

As in baseball where three strikes are out, let's take our three swings at a trio of sports items:

Coach Don Parker of the Mountaineers wonders who is responsible for making-out the schedule sequence for his basketball team . . . Don knows, of course, that Southwest teams usually follow the same order each year, but he would like to know why it had to happen that way this year.

He's referring to the fact that his young and untested team was forced to open its league card against the top four teams in the standings, Lincolnton, Central, Belmont and Shelby, that being, roughly, the reverse order of the four leading clubs in the circuit . . . The Mountaineers learned their lessons the hard way, early.

"How does the schedule maker expect our sophomores and youngsters to gain the right kind of experience being tossed against the veteran teams the first thing?" Don wants to know.

If it be any consolation to the Mountaineer mentor, the order of appearances for the foes probably will change drastically next year when Chase High School comes in to the SWC, replacing Tri-High and Cliffside . . . The new school, you know, already has revised the sequence of opponents for the Mountaineer football team.

Then, too, next year figures to find things a bit different, with Shelby and Belmont losing their senior teams and due to be weaker . . . And unless we miss our guess, the Mountaineers will a tougher aggregation when the present sophs and juniors mature into veteran performers.

Coach Bill Bates team also faced most-of-the-best first, the opening league games against perennial power Lincolnton and Central, teams running two-three in the SWC . . . Pace Setter Tri-High came last on the list for the first round . . . And, too, the Mountaineers had their baptism on the season against Bethware, merely the best girls team in Cleveland County.

Shelby Get Jr. Baseball Jump

Shelby, first in the state in Legion junior baseball for the past two summers, comes up as the first in this area, at least, to name its coach for this season . . . And who else but Pop Simmons . . . And who handed out the report last summer that the Lattimore school master was planning to retire from the Legion baseball coaching ranks?

Pop not only returns, but has his same helper from last year, Bill Metcalfe from Caroleen Tri-High, who probably will be accompanied to Shelby again this summer by his ace southpaw pitcher, Buddy Phillips . . . The big hurler and Junior Green, you recall, were the centers of controversy last season when they accompanied their high school mentor to Shelby, instead of playing with their home county entry.

Will this turn out to be another summer of hassles and bickerings over ball players sought by two or more Legion posts? . . . Or will it be a nice, quiet season with the action on the field instead of behind closed doors? . . . Shelby Legion officials, in fact, already have cast their bread upon the waters that "Releases" of players from one team to another are all well-and-good in keeping the boys satisfied . . . Well, that's a new twist.

Shelby also plans to seek a national rule change regarding teams "picking-up" players for playoff games . . . This, obviously traces back to the Regional tournament last summer when Shelby shuttered when it learned that Memphis had added bona-fide ball players after the Memphis city Legion race . . . Shelby folks had the mistaken idea that their boys were playing against a Memphis all-star team.

Back to the area coaching business, Ken Alexander reports in the Gastonia Gazette that Bill Wilhelm, the Clemson College coach, definitely will not be back at the helm of the Gastonia juniors.

Be brave through this winter weather . . . summer can't be far away when Legion baseball begins creeping into the sports talk.

Last Second Heroics In Big 4

If you know your rule book, you know that college basketball games are scheduled for 40 minutes duration . . . But the teams could dispense with the first 39 minutes and 50 seconds and come out with the same results around the Big Four of the Ole North State this winter.

No less than five games involving the Big Four teams have been settled in the last ten seconds of the game . . . And to show the further futility of playing the first nine-tenths of the games, two overtime battles also have seen last second heroics.

State and Duke have been making a habit of settling the issues in the final seconds . . . The Wolfpack beat Maryland, 55-53, on Lou Pucillo's shot in the last two seconds, and beat Clemson, 56-54, on Dan Englehardt's bucket in the final eight seconds.

The Blue Devils have won two games and lost one with the grand total of 11 seconds remaining on the clock . . . Duke lost to Clemson, 56-55, on a goal by Walt Gibbons with seven seconds to play . . . And the Blue Devils reversed the procedure, beating Wake Forest, 58-57, on a goal by John Frye with three seconds remaining . . . And Howard Hurt scored three foul shots (two personals and one technical) in the final second as Duke beat Louisville, 67-64 in the Dixie Classic.

As if overtimes were not strain enough, Big Four rivals have stretched the victory tighter with more last second overtime action . . . State beat Wake Forest in a double overtime affair Pucillo tied it with three seconds to play in the first extra period . . . And Lee Shaffer sank a goal in the last 20 seconds and Harvey Salz hit two foul tosses with a second left in Carolina's 72-68 battle with State.

Tri-High Beats K. M. With Late Rally

Student-Faculty Cage Tilts Set Friday

Students and faculty at Central High School will swap the "Three R's" for two-point field goals in the annual varsity-teachers basketball game at Central High Gym Friday night at 7 o'clock.

The Mountaineer varsity boys will play the men teachers to be coached by W. F. Powell, and the Junior High School girls will meet the women teachers coached by Mrs. Betty Gamble.

The annual student-faculty cage game which always is one of the highlights for local basketball fans is sponsored by the local unit of the NCEA, with all proceeds from the game going to that unit. Admission will be 50 cents for adults and 30 cents for students.

Varsity teams copped both the games with the teachers last year, the boys by 43-40 and the girls 29-24.

Mr. Powell has rounded up the coaches and teachers for his men's team, which will include Don Parker, Fred Withers, John Gamble, Bill Bates, Lawson Brown, Bill George, Ben Goforth, Bob Kennedy, Carl McWhirter, William Cleere, Tom Poston and John Lutz.

Mrs. Gamble also has a lengthy list of teachers planning to play against the junior high lassies. They include: Mrs. Wanza Davis, Mrs. Ann Withers, Mrs. Gaynelle Lail, Mrs. J. Patterson, Mrs. Bill Bates, Miss Elizabeth Collette, Miss Patricia Hayes, Miss Margaret McIver, Mrs. Juanita Logan, Mrs. Doris Eaker, Miss Jackie Blanton, Mrs. Marjorie Hall, and Miss Sara Biggers.

Five teachers also will lead the faculty cheering section, the cheer leaders being Miss Marie Lineberger, Miss Jeanette Scoggins, Mrs. Josephine Weir, Miss Kitty Lou Sutton, and Mrs. Margaret Powell.

Fred Plonk, chairman of the school board, and Bruce Thorburn, president of the Central PTA, will officiate the games.

mission will be 50 cents for adults and 30 cents for students.

Varsity teams copped both the games with the teachers last year, the boys by 43-40 and the girls 29-24.

Mr. Powell has rounded up the coaches and teachers for his men's team, which will include Don Parker, Fred Withers, John Gamble, Bill Bates, Lawson Brown, Bill George, Ben Goforth, Bob Kennedy, Carl McWhirter, William Cleere, Tom Poston and John Lutz.

Mrs. Gamble also has a lengthy list of teachers planning to play against the junior high lassies. They include: Mrs. Wanza Davis, Mrs. Ann Withers, Mrs. Gaynelle Lail, Mrs. J. Patterson, Mrs. Bill Bates, Miss Elizabeth Collette, Miss Patricia Hayes, Miss Margaret McIver, Mrs. Juanita Logan, Mrs. Doris Eaker, Miss Jackie Blanton, Mrs. Marjorie Hall, and Miss Sara Biggers.

Five teachers also will lead the faculty cheering section, the cheer leaders being Miss Marie Lineberger, Miss Jeanette Scoggins, Mrs. Josephine Weir, Miss Kitty Lou Sutton, and Mrs. Margaret Powell.

Fred Plonk, chairman of the school board, and Bruce Thorburn, president of the Central PTA, will officiate the games.

mission will be 50 cents for adults and 30 cents for students.

Varsity teams copped both the games with the teachers last year, the boys by 43-40 and the girls 29-24.

Mr. Powell has rounded up the coaches and teachers for his men's team, which will include Don Parker, Fred Withers, John Gamble, Bill Bates, Lawson Brown, Bill George, Ben Goforth, Bob Kennedy, Carl McWhirter, William Cleere, Tom Poston and John Lutz.

Mrs. Gamble also has a lengthy list of teachers planning to play against the junior high lassies. They include: Mrs. Wanza Davis, Mrs. Ann Withers, Mrs. Gaynelle Lail, Mrs. J. Patterson, Mrs. Bill Bates, Miss Elizabeth Collette, Miss Patricia Hayes, Miss Margaret McIver, Mrs. Juanita Logan, Mrs. Doris Eaker, Miss Jackie Blanton, Mrs. Marjorie Hall, and Miss Sara Biggers.

Five teachers also will lead the faculty cheering section, the cheer leaders being Miss Marie Lineberger, Miss Jeanette Scoggins, Mrs. Josephine Weir, Miss Kitty Lou Sutton, and Mrs. Margaret Powell.

Fred Plonk, chairman of the school board, and Bruce Thorburn, president of the Central PTA, will officiate the games.

Bethware Scores Two Wins Over Grover Cagers

Bethware nabbed a couple of victories over Grover Tuesday night, the league-leading girls winning by a 57-35 score and the Buccaneers scoring a 58-43 win.

The win was the 12th straight in the Cleveland County Conference for Mrs. Ellen Powell's pace-setters which were led Tuesday night by Barbara Gamble with 23 points and Faye Bolin with 20. Gloria Huffstetler tallied 24 for Grover.

Four of the five starters hit in the double-digits for the Bethware boys, led by Jerry Wright's 15 and Dean Burton's 14. Wendell White led Grover with 12.

Bethware will be host to Fallston Friday and will go to Polkville next Tuesday.

Grover plays at Kings Mountain Thursday night and travels to Waco next Tuesday.

Subs: Bethware — M. Hamrick, Herridon, E. Falls, Panther, P. Bolin, Smith, McSwain, Grover — Wright, Grover 22. Halftime score: Bethware 30, Grover 22.

Subs: Bethware — Carroll, Bidix 4, D. Grover, Grover — C. Green 5, Mullins 1. Halftime score: Bethware 21, Grover 20. Reporter: Kim Cashion.

Subs: Bethware — Carroll, Bidix 4, D. Grover, Grover — C. Green 5, Mullins 1. Halftime score: Bethware 21, Grover 20. Reporter: Kim Cashion.

Subs: Bethware — Carroll, Bidix 4, D. Grover, Grover — C. Green 5, Mullins 1. Halftime score: Bethware 21, Grover 20. Reporter: Kim Cashion.

Subs: Bethware — Carroll, Bidix 4, D. Grover, Grover — C. Green 5, Mullins 1. Halftime score: Bethware 21, Grover 20. Reporter: Kim Cashion.

Subs: Bethware — Carroll, Bidix 4, D. Grover, Grover — C. Green 5, Mullins 1. Halftime score: Bethware 21, Grover 20. Reporter: Kim Cashion.

Subs: Bethware — Carroll, Bidix 4, D. Grover, Grover — C. Green 5, Mullins 1. Halftime score: Bethware 21, Grover 20. Reporter: Kim Cashion.

Subs: Bethware — Carroll, Bidix 4, D. Grover, Grover — C. Green 5, Mullins 1. Halftime score: Bethware 21, Grover 20. Reporter: Kim Cashion.

Subs: Bethware — Carroll, Bidix 4, D. Grover, Grover — C. Green 5, Mullins 1. Halftime score: Bethware 21, Grover 20. Reporter: Kim Cashion.

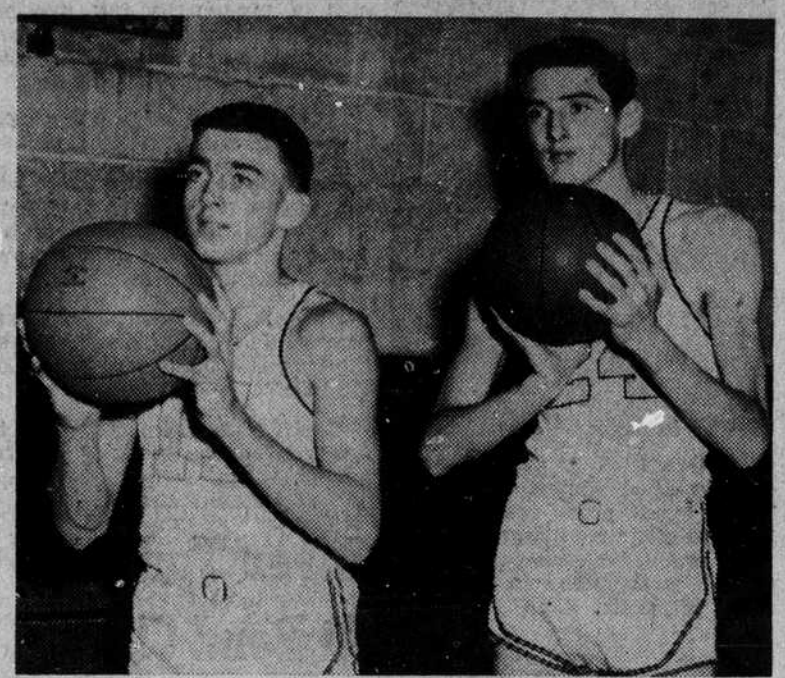
Subs: Bethware — Carroll, Bidix 4, D. Grover, Grover — C. Green 5, Mullins 1. Halftime score: Bethware 21, Grover 20. Reporter: Kim Cashion.

Subs: Bethware — Carroll, Bidix 4, D. Grover, Grover — C. Green 5, Mullins 1. Halftime score: Bethware 21, Grover 20. Reporter: Kim Cashion.

Subs: Bethware — Carroll, Bidix 4, D. Grover, Grover — C. Green 5, Mullins 1. Halftime score: Bethware 21, Grover 20. Reporter: Kim Cashion.

Subs: Bethware — Carroll, Bidix 4, D. Grover, Grover — C. Green 5, Mullins 1. Halftime score: Bethware 21, Grover 20. Reporter: Kim Cashion.

Subs: Bethware — Carroll, Bidix 4, D. Grover, Grover — C. Green 5, Mullins 1. Halftime score: Bethware 21, Grover 20. Reporter: Kim Cashion.



MOUNTAINEER NEWCOMERS — Two newcomers to Kings Mountain are lending a hand to the Mountaineer basketball team this winter, Tommy Watson and Bobby Goodson, left to right. Watson moved here from Maiden and Goodson from Belmont. The rangy Goodson has been a regular all season for the Mountaineers, but missed a recent game due to a badly sprained ankle. Watson also was a starter in one game this season.

(Herald Photo by Pennington Studio)

Four Of Mountaineer 'Iron Men' Score In Double-Digits In Loss

The Mountaineers found their offense up and their defenses down in the 59-49 loss to Forest City here last Friday night.

The 49 points was the top figure by the Mountaineers in the first ten games of the season, but it proved in vain as Forest City matched the biggest score against st Kings Mountain this year, Belmont also hitting 59. Thus, the Mountaineers counted their sixth league loss in seven starts.

Forest City's defending SWC champion girls made it a clean sweep with a 47-39 win in the opener.

Five "iron men" went all the way for the Mountaineers in the loss, and four hit in the double-digits in scoring for the best-balanced and top scoring attack of the season for Coach Don Parker's outfit. Soph Chip Thorburn led with 16 points, trailed by Jimmy Blanton with 11, and Don Fisher and James Robbs with 10 each.

Making a battle of it all the way, the Mountaineers led on two different occasions and tied the score three times during the second half. The Mountaineers never trailed by more than four or five points throughout the game with the ten-point spread at the end being the biggest margin between the teams for the contest.

Tailing by 33-28 at halftime, the Mountaineers rallied for seven straight points to take the lead at 35-33 on Fisher's shot, and regained the lead again Monday night.

A brother-sister team of Jerry Huffstetler and Gloria Huffstetler are the big point-makers for the two Grover teams. The Grover boys are one of the top division teams in the Cleveland County race.

The girls game Thursday night will begin at the usual starting time here of 7 o'clock, with the boys contest carded about 8:15.

Mountaineer clubs will be seeking revenge for a double liding when they resume Conference action on Tuesday night at Lincolnton. The Linc lassies won the first meeting here, 49-28, and the Wolves won by a 45-32 score.

Although Coach Jack Kiser has termed this a rebuilding season for his always strong girls team, the Wolverettes are in second place in the Southwest chase, trailing only undefeated Tri-High. The Lincolnton boys are in fourth place in the SWC standings.

Judy Medlin And Chip Thorburn Lead Scoring

Judy Medlin and Chip Thorburn are leading the scoring as the Mountaineers reach the halfway mark on their Southwest Conference basketball seasons.

Judy is on her way toward leading the Kings Mountain girls in scoring for the second straight year, having tallied 239 points, an average of 21.7 per game. Shee scored 416 points in leading the Mountaineettes last winter.

Chip, one of the two sophomore starters for the boys team, has moved into the lead in the boys scoring race after Don Fisher held the top mark during the early games. Thorburn has scored 90 points and Fisher has 86.

A total of 11 players have scored for the Mountaineettes, five for the Mountaineettes.

Scoring totals for Kings Mountain players to date:

GIRLS			
Player	FG	FT	TP
Judy Medlin	88	63	239
Pat Gladden	34	12	80
Marlene Weir	31	16	78
Becky Ormand	9	6	24
Peggy Black	2	0	4

BOYS			
Player	FG	FT	TP
Chip Thorburn	34	22	90
Don Fisher	36	14	86
James Robbs	21	11	53
Bobby Goodson	12	18	42
Jerry Wright	18	4	40
Tommy Thomas	12	9	33
Jimmy Blanton	11	2	24
Punch Parker	3	7	13
Perry Champion	4	1	9
Tommy Watson	1	0	2
Mike Ware	0	2	2

Ross Scores 16 In Jr. High Win

Husky Eddie Ross went on the biggest scoring spree of the season to lead the Kings Mountain Junior High team to a 33-29 victory over Grover's Jayvees here last Thursday night.

Eddie tossed in 16 points as he scored nearly half the Little Mountaineers total in their fourth victory of the season. He scored eight field goals for his total. Dean Green of Grover was top point-maker for the contest, with 19.

The Grover girls won the opener, 51-41, as Linda Eaker tallied 21 for the winners and Marlan Plonk again was the high scorer for Kings Mountain with 20.

The Mountaineers hit 20 of 55 field goal attempts for the game, a 36-percent average. Forest City bucketed 27 for 61 attempts, a 44-percent figure.

Both teams were sizzling with their shooting in the first quarter, K. M. hitting five for ten, and F. C. connecting on nine for 17. Forest City also bettered the 50-percent mark in the last quarter, with six for 11 field attempts.

Ralph Haynes, the top hold-over from last year's fine Forest City club, led his club with 25 points, having 19 at halftime.

Judy Medlin scored 16 and Pat Gladden 16 as the Mountaineettes battled Forest City's lassies right down to the final horn. As in the boys game, the final eight point difference was the biggest spread between the two teams in the game.

Nine Grover players entered the scoring column.

Fallston girls won the opener, 58-44, as Wright scored 31 for the winners. Gloria Huffstetler paced Grover with 19.

Loss to Cliffside Only Second In 31 Games Of Coach Parker Era

Kings Mountain's loss to Cliffside last week was more than a mere defeat on the basketball ledger . . . it was a history-making defeat, for those who like history blended with their basketball.

Cliffside's 48-42 win last Thursday night was only the second time in fifteen and a half years that coach Don Parker has been cage mentor here that the Cliff-Dwellers have beaten the Mountaineers on the court.

The only other time in the 31 games was on Feb. 5, 1954, also at Cliffside, when the homestanders won by 50-47.

Earlier that year, the Mountaineers had trounced Cliffside by a 53-37 score here.

"Those scores," observes coach Parker, "are good examples of how much that home court means to Cliffside. Even in all those years that we have beaten Cliffside in both games, the scores have been close up there, and we run off and leave them down here."

Mountaineers Fade In Stretch On Both Southwest Loop Games

The final four minutes of the games proved the downfall for both Mountaineer basketball teams here Tuesday night against the visiting Caroleen Tri-High outfits.

Both local teams went into the final portion of the last quarter in good position to take command of the game. But it was Tri-High which put on the stretch drives to win, the girls by 56-36 and the boys by 57-43.

The final scores in both games were misleading in the battles which went on at Central High Gym.

Kings Mountain's girls stayed within six or eight points of the loop-leading Tri-High lassies all the way, with the score midway in the last period standing at 41-34 in favor of the visitors. But in the final four minutes, Caroleen hooped 15 points while the Mountaineettes were garnering only two.

Tri-High boys also broke the game wide open in the second contest. The score was tied at 40-40 with four minutes to go after the two teams had see-sawed back and forth in the lead all evening. The game was tied at 11-all at the end of the first quarter, and 23-all at halftime.

Tri-High led 38-35 at the end of three stanzas, but the Mountaineers, pulled even at 40-40 midway the period.

The winners, however, turned on several fast break baskets, to assume the lead and win by the 14-point margin.

Chip Thorburn with 17 and Don Fisher with 15 were the only two Mountaineers consistent in the scoring column, and they were the only locals to obtain field goals in the second half.

Thorburn tossed in most of his buckets on jump shots from the corner against the Tri-High zone defense, and his sharp-shooting which produced ten points at halftime was the main reason the Mountaineers were all-even at the rest period.

The Mountaineers tossed in five field goals in each of the first three periods, appearing to be on the way toward matching the feat of five fielders in each period which they accomplished against Forest City last Friday night. But the local lads could add only two field goals in the last quarter as Tri-High pulled ahead.

For the game, Kings Mountain hit 17 of 53 field goal attempts, a 32 percent accuracy. Caroleen hit 22 for 57, a 39-percent figure.

A couple of visitors took top scoring honors, Barbara Webb with 28 in the girls game, and lanky Willis Shew with 21 in the boys contest. Judy Medlin's 17 led the K. M. girls, the same figure Thorburn posted for the boys.

Tri-High Victory 1st Here In 16 Years

The Mountaineer's 57-43 loss to Tri-High here Tuesday night was a "dubious first" for Coach Don Parker's club.

It was the first time in the 16 years that Parker has been coaching here that the Mountaineers have lost to Tri-High in Central Gym.

"We have lost some games up at Caroleen," the local mentor recalled, "but this is the first time that Tri-High has come down here and beaten us in our own place."

GIRLS			
KINGS MOUNTAIN (36)			
Forwards	FG	FT	TP
Medlin	7	3	17
Weir	4	0	8
Gladden	5	1	11
Lewis	0	0	0
TOTALS	15	4	36

TRI HIGH (56)			
Forwards	FG	FT	TP
Campfield	6	0	12
Webb	12	4	28
Waters	4	0	8
White	0	0	0
Lynch	0	0	0
TOTALS	26	4	56

BOYS			
KINGS MOUNTAIN (43)			
Player	FG	FT	TP
Fisher	6	3-5	1-15
Thorburn	8	1-1	3-17
Blanton	0	0-1	2-0
Robbs	2	2-2	3-6
Wright	0	1-1	0-1
Thomas	1	0-0	0-0
Goodson	0	1-2	2-0
Parker	0	1-4	0-1
TOTAL	17	9-14	11-43

TRI HIGH (57)			
Player	FG	FT	TP
Francis	6	0-2	2-12
Greene	2	2-3	3-6
Shew	8	5-6	3-21
Taylor	0	4-4	3-4
Allen	6	2-4	1-14
Butler	0	0-0	0-0
Davidson	0	0-0	0-0
TOTALS	22	13-19	12-57

BOYS			
KINGS MOUNTAIN (43)			
Player	FG	FT	TP
Fisher	6	3-5	1-15
Thorburn	8	1-1	3-17
Blanton	0	0-1	2-0
Robbs	2	2-2	3-6
Wright	0	1-1	0-1
Thomas	1	0-0	0-0
Goodson	0	1-2	2-0
Parker	0	1-4	0-1
TOTAL	17	9-14	11-43

BOYS			
KINGS MOUNTAIN (43)			
Player	FG	FT	TP
Fisher	6	3-5	1-15
Thorburn	8	1-1	3-17
Blanton	0	0-1	2-0
Robbs	2	2-2	3-6
Wright	0	1-1	0-1
Thomas	1	0-0	0-0
Goodson	0	1-2	2-0
Parker	0	1-4	0-1
TOTAL	17	9-14	11-43