

## Population

Greater Kings Mountain 10,320  
City Limits 7,206

The figure for Greater Kings Mountain is derived from the 1955 Kings Mountain city directory census. The city limits figure is from the United States census of 1950.

# Kings Mountain Herald

Kings Mountain's Reliable Newspaper

20 Pages Today

VOL. No. 45

Established 1889

Kings Mountain, N. C., Thursday, November 10, 1960

Seventy-First Year

PRICE TEN CENTS

# Senator John F. Kennedy Nation's Next President

## City And Grover Democratic; Township Edge 28 For GOP

### Bethware Vote Negates City Kennedy Margin

Kings Mountain citizens went to the polls in record numbers Tuesday, voting with the majority of the nation in favoring Democrat John F. Kennedy for president, returning the community to the Democratic column by a margin of 126 votes.

Number 4 Township, however, remained in the Republican column on the national level, as Bethware precinct scored a more than 2 to 1 margin for the Republican candidate. Grover also returned a Democratic majority by 23 votes, but the GOP Bethware bulge was too much.

The township margin for Nixon-Lodge was 28 votes, the aggregate total 2075 to 2047.

Otherwise, the township gave its approval to Democrats with varying degrees of support.

Terry Sanford, Democrat, was the township favorite for governor, running slightly ahead of his party's presidential ticket, but slightly behind 11th district Congressman Basil L. Whitener in his race against Kelly Dixon, Kings Mountain builder.

In county balloting, there were no Republican candidates. However, this area's representative on the county commission, J. Broadus Ellis, of Grover, was one of three commissioners elected to a four-year term. The other four year men will be Hugh Dover and John D. White. Elected for two

(Continued on Page Eight)

## Local News

### Bulletins

#### IN TOURNAMENT

Miss Sue Hunnicutt, a junior in the high school department of Stratford College, Danville, Va., won second place in the badminton tournament held recently. A college student won first place. Miss Hunnicutt is the daughter of Mr. and Mrs. H. R. Hunnicutt.

#### ATTENDS MEETING

Miss Kittie Lou Sutton, Kings Mountain teacher, attended the meeting Friday and Saturday of the Department of Mathematics of the North Carolina Education Association. Miss Sutton is president of the mathematics division.

#### ELECTED

Mrs. Eugene McCarter has been elected secretary of the Elementary Teachers' Division of the Southwestern District, North Carolina Education Association. Mrs. McCarter is a fifth grade teacher at North school.

#### FAIRVIEW LODGE

Regular communication of Fairview Lodge 339 AF&M will be held Monday night at 7:30 at Masonic Hall, according to announcement by Secretary T. D. Tindall. All members are urged to be present.

#### KIWANIS CLUB

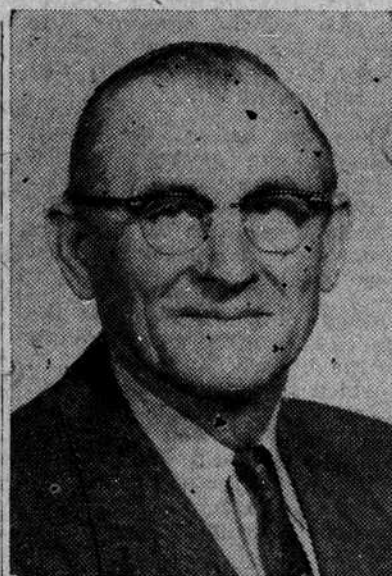
New teaching aids in use in the Kings Mountain school system will be demonstrated for members of the Kings Mountain Kiwanis club at their meeting Thursday. The club convenes at 6:45 at the Woman's club.

#### COURT OF HONOR

Boy Scout Court of Honor will be held Thursday at 7:45 p. m. at Central Methodist church with all Scouts and Scouts from this district invited.

#### METER RECEIPTS

Parking meter receipts for the week ending Wednesday at noon totaled \$137.98, including \$11.68 from on-street meters, \$15 from over-parking fees, and \$11.30 from off-street meters. City Clerk Joe McDaniel reported.



**FOUR-YEAR TERM** — J. B. Ellis, of Grover, was re-elected county commissioner Tuesday. Mr. Ellis placed second among the five candidates, and thereby won election to a four-year term. He is completing his first term.

### Walker's Friend Is Senator-Elect

A new senator elected Tuesday in Delaware is a friend of a Kings Mountain citizen.

Caleb Boggs, incumbent Republican governor of Delaware, defeated Senator Allen Frear, incumbent Democrat, in Tuesday's general election.

Paul Walker, manager of Plonk Brothers & Company, knew the senator-elect as Col. Caleb Boggs during World War II. Col. Boggs was chief of G-4, the supplies chief of the 28th armored division which saw action in Europe.

Mr. Walker renewed his acquaintance with his service friend during the Labor Day weekend at the annual reunion of the 28th armored division in Puttburgh, Pa.

"He is one of the nicest fellows I've ever known," Mr. Walker says.

#### MERIT AWARD

Gail Morrison, Kings Mountain high school junior, was among sixteen high schoolers to receive certificates of merit from the National Educational Foundation for scoring in the top 25 percent bracket nationwide in tests administered last spring by the foundation. Miss Morrison's name was inadvertently omitted from the group listed in last week's Herald.

### United Fund Gifts Grow To \$12,100

"Our goal is in sight and I believe we'll make it," Bob Maner, chairman of Kings Mountain United Fund said Wednesday. Chairman Maner was pleased with recent totals which show donations and pledges of \$12,100, a total of 72 percent of the \$17,000 budget.

He said a few more favorable reports comparable to last year's donations will complete the campaign successfully.

Chairman Maner reported addition of four more firms into the 100 percent honor roll list, including Bridges Auto Parts, Kings Mountain Sheet Metal Works, Cooper's Inc., and Plonk Brothers & Company.

Chairman Maner was pleased particularly with further reports from three industrial establishments. Mauney Hosiery Company and employees have pledged \$1504, an average of \$10.44 per employee. Carolina Throwing Company has pledged \$592, or \$11.88 per employee. Massachusetts Mohair Plush Company gifts from company and employees totals \$1354, an increase from last year.

Kings Mountain United Fund combines several fund-raising campaigns into one.

This year, eight civic, service, and charitable organizations are participating as beneficiaries of the campaign. They are Kings Mountain school band, Davidson school band, Boy Scouts, Girl Scouts, Jacob S. Mauney Memorial library, City Recreation commission, Kings Mountain Red Cross chapter, and Cleveland County Life-Saving and Rescue squad.

### Rotary Club To Hear Student

Miss Nancy Hovis, who spent the summer in the Netherlands as an American Field Service Exchange student, will speak to Kings Mountain Rotarians at their meeting Thursday.

The civic club meets at 12:15 at the Long Bow Restaurant on Shelby road.

A. J. Slater is program chairman and will present Miss Hovis.

#### An Editorial

### The Election and the Textile South

The election of John F. Kennedy as President means that, when he assumes office, the nation will have as president a man from a textile-producing area, though an area now less prosperous in textiles than the textile South.

During the campaign, one of the chief arguments of Democrats supporting Mr. Kennedy was that he well understood the textile problems relating to imports and the inference was that, if elected, Mr. Kennedy would alleviate these ills, whereas the retiring administration has not.

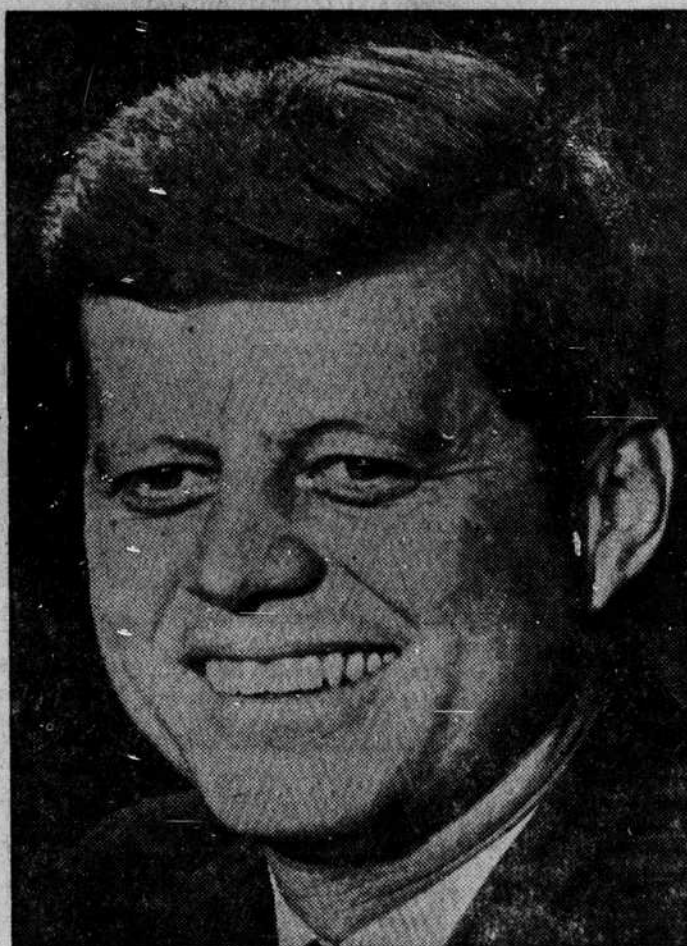
It was further pointed out in North Carolina that Governor Luther Hodges, who graduated from textiles into government via textile industry, is a likely appointee to an important post in the Department of Commerce, where he could be in position to give some aid to the industry.

Oddly, with the exception of J. Spencer Love, the major echelons of the textile industry in this area turned their backs on their friend, Governor Hodges.

This is merely one issue in the many-sided business of electing a president and in his discharge of the duties of his office. But it is perhaps the most important, from the bread-and-butter standpoint, of this textile producing area.

Generally, the election result mirrors the predicted closeness of the race and, some observe, the fact that the aims of the two candidates, their platforms, and of the majority wing of both parties, are essentially differences over method and the identity of the office-holders.

The Herald believes that Mr. Kennedy will be a forceful and effective president, in both domestic and foreign affairs.



President-Elect John Fitzgerald Kennedy

## Citizens Want Speedier Voting

### One-Hour Wait Not Unusual Here Tuesday

BY MARTIN HARMON

Hundreds of Kings Mountain citizens are hoping that, prior to another nation-wide election if not before, something will be done to speed voting in Kings Mountain, particularly in the West Kings Mountain precinct.

It would be impossible to estimate the man-hours lost in Tuesday's record vote as lines formed early and the hard-pressed registrars worked solidly for more than 14 hours seeking the names of registered voters. Nor would it be possible to know the number of voters disfranchised by inability to vote in a matter of a few minutes.

As the 6:30 polls closing hour arrived, there was a huge mass of would-be voters at the West Kings Mountain precinct, and another long line at East Kings Mountain precinct.

Anticipating the record vote, Election Board Chairman Ralph Gilbert had informed the precinct officials to allow everyone within the building at the 6:30 closing hour to vote. At City Hall, all would-be voters were within the door of the courtroom at closing time.

At West Kings Mountain, the line was spread through Victory Chevrolet Company's garage and the voting wasn't completed until after 9 p. m. Later voters spent three hours in casting their ballots.

Mrs. J. H. Arthur, West Kings Mountain registrar, said the slowness stemmed from several factors, among them the more than 3300 registrants at the West Kings Mountain precinct, effort to find the names of would-be voters who were either unregistered or who were registered in another precinct, and,

(Continued on Page Eight)



RE-ELECTED — Congressman Basil L. Whitener, incumbent Democrat, won re-election to a third term as 11th district Congressman Tuesday.

### Basil Whitener Is Re-elected

Congressman Basil L. Whitener, Gastonia Democrat, was re-elected to a third term Tuesday.

The incumbent Congressman was opposed by Kelly Dixon, Kings Mountain, Republican, in his first bid for public office.

Early returns, with 110 of the district's 156 precincts reporting, showed Mr. Whitener ahead by 51,289 to 30,436.

Mr. Whitener got a big lead in Cleveland county, gathering 13,994 votes to Mr. Dixon's 5,782.

Mr. Dixon carried two home county precincts, Bethware and Casser.

Most of the campaign found both candidates content to see prospective voters and with each boosting his respective party ticket at all levels.

Congressman Whitener, an attorney, is a member of the judiciary committee of the House of Representatives.

### Popular Vote Margin Close; Nixon Concedes

The nation's voters, in record numbers, Tuesday chose Senator John F. Kennedy to be the next President.

Concurrently, the voters elected his running mate Senator Lyndon B. Johnson, of Texas, vice-president.

The election of the Democratic standard-bearer will return the party to the White House for the first time since it was vacated by President Harry Truman to President Dwight D. Eisenhower early in 1953.

The voting was heavy and close, both popularly and electorally.

Though at midnight it appeared that Senator Kennedy was leading in sufficient states to assure an electoral victory, his popular vote lead never quite reached the two-million mark and dwindled well below the million mark as returns trickled in Wednesday morning.

The Republican candidate, Vice-President Richard M. Nixon, made an early morning appearance in which he indicated he felt he had lost. But he did not formally concede until after noon on Wednesday, when Minnesota was firmly logged for Kennedy, giving him the magic margin of electoral votes.

Votes were still coming in both Illinois and California, where Kennedy held small leads.

At 2 p. m. Wednesday, the president-elect made his victory statement from Hyannisport, Mass. He first read letters of congratulations from Mr. Nixon and President Eisenhower and read his own reply to Mr. Nixon. There were mutual pledges of friendship.

It appeared Mr. Kennedy would have an electoral vote total of about 330, against the 269 required for victory.

The once-solid South was again split, as it has been since 1948. Virginia, Florida, Kentucky and Tennessee supported Vice-President Nixon, while Mississippi chose a set of independent electors.

Southern surprises to the pollsters, as well as the vote-seekers, were South Carolina and Texas. Both had been labeled firmly for Mr. Nixon, but their voters dictated otherwise.

Congressional voting indicates that the Democrats will retain control of both the Senate and House of Representatives by approximately the same margins that prevailed prior to the voting.

When Mr. Kennedy assumes the presidency in January, it will be the first time since 1955 that a President has been of the same political party of the majority of the Congress.

### Glaucoma Clinic Set For Shelby

A two-day glaucoma clinic will be conducted in Shelby on November 16 and 17.

The clinic is being sponsored by the Shelby Lions club, assisted by other Lions clubs of the county, J. Edwin Spangler, co-chairman, reported.

The clinic will be open from 1 to 7 p. m. next Wednesday and from 10 a. m. to 4 p. m. the following day.

Purpose of the clinic is to detect glaucoma, a blinding disease of the eyes, if undiscovered and untreated.

Lions clubs throughout the state are promoting and sponsoring the clinic as a phase of the general Lions club program of aid to the blind and the deficient in sight.



Governor-Elect Terry Sanford

## Sanford Elected State's Governor

### Lady In Distress Says "Thank You"

Several Kings Mountain citizens, who helped a young lady in distress, have her heartfelt gratitude, she wrote the Herald this week.

Betsy Holbrook, an Asheville high school student, and a group of friends had car trouble here last Friday night while returning from the Asheville-Gastonia football game.

According to her letter, she didn't get all the names of those who helped, but she remembers that Mr. Richard of Victory Chevrolet, came out at midnight to install a new generator in the auto, that City Service Station folk were especially nice and that two policemen were also especially helpful. In a postscript, she wrote, "One of the policemen may have been called Jackie. He was a sergeant."

She was also thankful that one of the policemen had suggested she call her parents, to allay their worries about arriving home late.

"It is indeed refreshing to find those who will take time to help others, especially teenagers," young Miss Holbrook wrote.

#### BOARD TO MEET

The city board of commissioners will convene at 7:30 Thursday night at City Hall courtroom. Included on the agenda is confirmation of street improvements assessments on several city streets.

### Democrat Gets Third Ballot Victory of '60

Terry Sanford, of Fayetteville, won his third battle of the battles in 1960 Tuesday, being elected Governor by well over 100,000 votes.

Unofficial returns from 1838 of 2,089 precincts showed Sanford had 643,292 votes, while his Republican opponent Robert L. Gavin had polled 529,846.

It was the closest race for Governor in modern political history and continues for four more years the state's 60-year record of sending a Democrat to the Governor's Mansion.

Mr. Sanford has had little respite from politics throughout 1960. First he led a four-man race for the Democratic nomination by a nice plurality, but not enough for victory. Dr. I. Beverly Lake called for a run-off which was hard-fought throughout and again Sanford emerged victorious.

Though Mr. Gavin had already been nominated as the Republican entry, past history indicated that Mr. Sanford would have to do little more than await the general election results before moving to Raleigh.

The Democratic national convention changed all that. Mr. Sanford supported John F. Kennedy for the presidential nomination and seconded his nomination, while the majority

(Continued On Page Ten)

## Democrat Official Mrs. Lipford Ardent Campaigner At All Levels

Few will disagree with the contention that Mrs. J. E. Lipford, Kings Mountain's vice-chairman of the Democratic party, is the most ardent Democrat in this community.

Since the Los Angeles, California, Democratic convention, Mrs. Lipford worked at all levels for the full ticket, in state level party conferences and in her own precinct of East Kings Mountain. Beginning with the August rally of party officials in Raleigh, Mrs. Lipford has criss-crossed North Carolina attending rallies, meetings and other Democratic gatherings, including the Charlotte Kennedy rally, the Charlotte tea for Mrs. Lyndon Johnson and the president-elect's mother, and the Charlotte strategy session with Bob Kennedy. Subsequently, there were rallies at Shelby, and Spindale, and another at Chapel Hill. Then there was a tea last Saturday at Mt. Holly and the congressional dinner at Gastonia.

Mrs. Lipford was more than a



**BUSY CAMPAIGNER** — Mrs. J. E. Lipford is county Democratic vice-chairman and has been one of the county's most active campaigners during the general election campaign.

### Unofficial Number 4 Township Election Results

For President	E. K. M.	W. K. M.	Grover	Bethware	Totals
Kennedy	780	841	280	146	2047
Nixon	673	822	253	327	2075
For Governor*					
Sanford	801	946	290	155	2192
Gavin	702	708	230	308	1948
For Congress					
Whitener	891	966	314	168	2339
Dixon	606	645	184	287	1722
For County Comm.**					
Dover	1008	1178	342	253	2781
Ellis	1014	1177	410	249	2850
Beam	1004	1176	324	243	2747
White	1003	1180	344	239	2766
Sarratt	1003	1172	365	240	2780

\*I. Beverly Lake had four write-in votes for governor at East Kings Mountain.

\*\*Brady Lall had one write-in vote for county commissioner at Grover.

(Continued On Page Eight)