

Population

Greater Kings Mountain 10,320
City Limits 8,008

This figure for Greater Kings Mountain is derived from the 1955 Kings Mountain city directory census. The city limits figure is from the United States census of 1950.

Kings Mountain Herald

Kings Mountain's Reliable Newspaper

16 Pages Today

VOL 72 No. 47

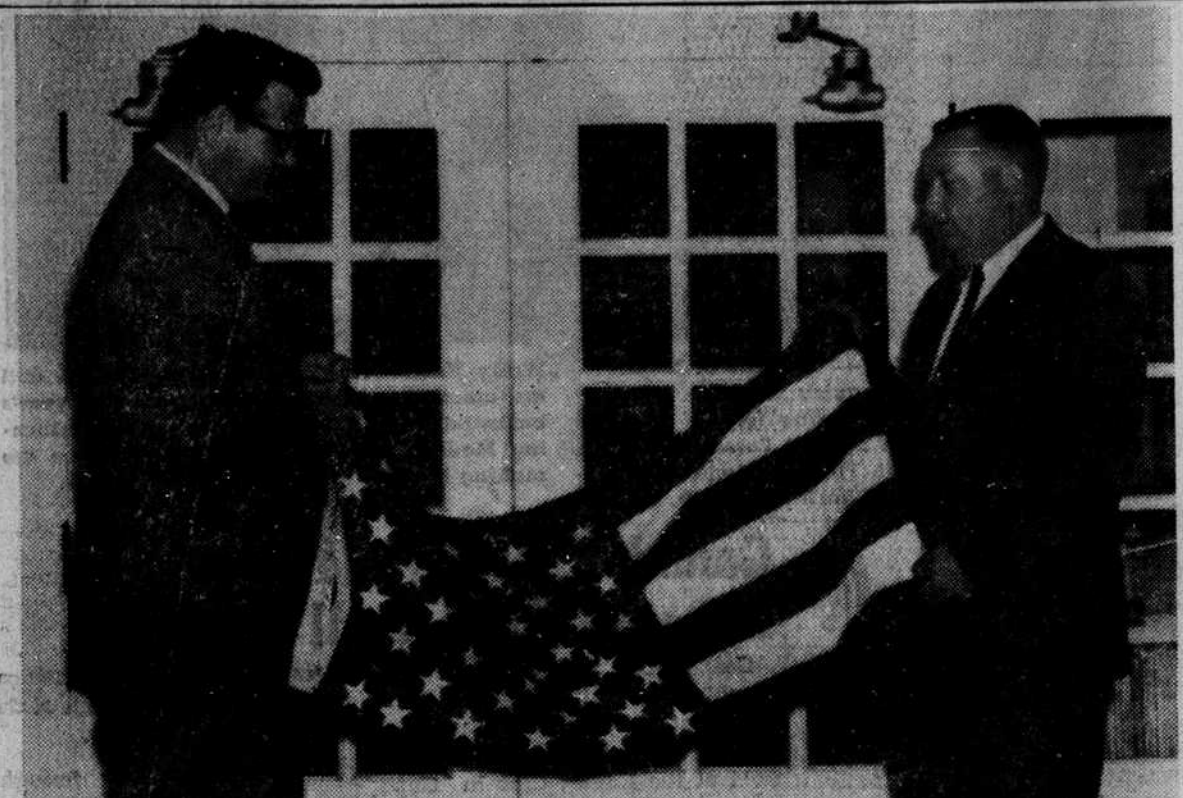
Established 1889

Kings Mountain, N. C., Thursday, November 30, 1961

Seventy-Second Year

PRICE TEN CENTS

\$132,800 Electrical Construction Recommended



SCHOOL RECEIVES FLAG — Kings Mountain high school has a new United States flag, compliments of Otis D. Green Post 155, the American Legion. Legionnaire J. T. McGinnis, at right, is shown above presenting the flag to Principal Harry Jaynes. (Photo by Claire Gilsted)

Mayor Asked To Compile Fieldhouse Bill Of Costs

Materials for construction of a fieldhouse at City Stadium will cost \$5,000, according to figures compiled by Mayor Kelly Dixon Wednesday. Labor costs on the construction were not yet available.

Mayor Dixon compiled the figures on instruction of the board of city commissioners Tuesday night as they met in special session to consider recommendations for improvement to the stadium by the stadium study commission. The committee stressed the immediate need of a fieldhouse.

The stadium committee suggests the fieldhouse facilities be constructed at ground level behind homeplate at the stadium. In the event a grandstand should be erected, the structure could be built atop the fieldhouse.

The sewage would be dumped from the proposed fieldhouse to the Gaslon Street sewage line. Mayor Dixon said the city has a pump in stock.

Mr. Dixon also said a proposal from H. R. Parton, as reported by chairman John H. Moss, of the stadium committee, that Mr. Parton will deed a strip of land adjacent to the north side of stadium to the city for use as a road in exchange for a sewer line from Carpenter street, the line tying into the fieldhouse line. Cost of these lines, with manholes, would be \$1525.

The access road would connect with a strip of land owned by the city which could be used as parking area.

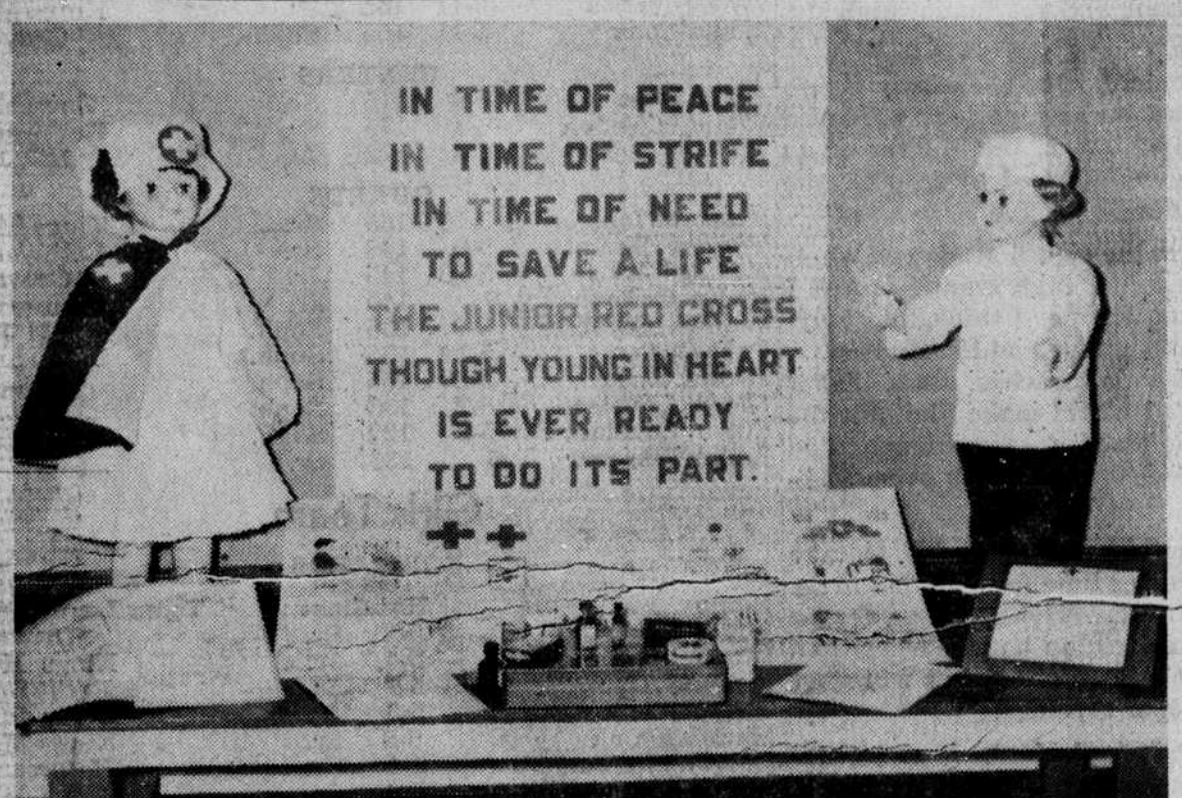
The long-range improvement plan also calls for a consistent program of construction based on annual appropriations for a five-year period.

H. Otto (Toby) Williams presented the recommendation to the committee in the absence of chairman Moss. Also on the committee is J. E. Rhea.

The commissioners took no formal action on the proposal, but instructed Mayor Kelly Dixon to compile the cost report of construction of the fieldhouse for presentation at the next board session.

"We have too much in the present stadium to throw it away," said Mr. Williams in presenting.

(Continued On Page Eight)



JUNIOR RED CROSS DISPLAY — East School students who are members of the recently-organized Junior American Red Cross in Kings Mountain prepared a window display on downtown streets last week and their exhibit pictured above is also on display at the school.

Junior Red Cross chapters have been organized in each of the nine township schools. Overall theme of the organization is printed on the posterboard between the two dolls representing Junior American Red Cross workers. (Photo by Claire Gilsted)

Improvements Would Meet Power Demand Through 1970

BY MARTIN HARMON

A Charlotte engineering firm recommends that the city spend \$132,800 as soon as possible to provide adequate power service to its customers and to take care of anticipated power demands through 1970.

Immediately required on a piecemeal construction basis is expenditure of \$75,600. Southeastern Consulting Engineers, Inc., says in its report received by the city this week and culminating a survey the engineering firm began several months ago.

Basic construction recommendations are:

1) Installation of central delivery equipment with outdoor metalclad switchgear, estimated to cost \$46,700.

2) Conversion of the system from 2400 to 4160 volts, addition of an eighth circuit and addition of a fourth (neutral) wire on three of the existing seven circuits, plus other branch line improvements, estimated to cost \$78,900.

Engineering fee at six percent of the construction cost would be \$7,500.

The engineers commented: "The present system loading is such that the primary voltage drop will exceed the recommended limits even if all conductor increases proposed for the 1970 system are installed immediately without converting the system to 4160 volt operation. And further increases in conductor size will not significantly postpone necessity of converting to 4160 volts and will result in a system whose conductors will be oversized after the conversion has been accomplished. It is recommended that the City's distribution system be converted to 4160 volt operation with increased conductor sizes and the proposed protective equipment at the earliest date."

The proposed construction would raise the city's peak load kilowatt hour maximum from 4000 KW to 9500 KW, say the engineers.

Estimated time of construction from authorization by the city commission is 3 1/2 weeks.

On the necessity for the switchgear construction, the engineers wrote, "This arrangement exposes the City's entire distribution system to service interruptions as a result of trouble on any of the distribution circuits."

The engineers added that this switchgear installation should be designed to become, in future up-buildings, a low-voltage section of master unit stations.

On a piecemeal basis, the engineers recommend, "Install switchgear and perform line work as required to increase the system capacity without exceeding the conductor requirements for the long-range system."

The remaining portion of the work should be started not later than two years after completion of the initial work, it was added.

The engineers considered two alternate systems to produce higher voltage systems, found that 22,000 volt transmission would cost \$363,000, while 44,000 volt transmission would cost \$405,000. Both were rejected on grounds that improvements recommended could be built into whatever future transmission system need might dictate.

Ten-Year Power Demand Double

Average monthly peak load on the City of Kings Mountain electrical distribution system has jumped from 1568 kilowatts in 1950 to 3564 kilowatts in the year 1960.

This is the report of Southeastern Consulting Engineers, Inc., of Charlotte, in a corollary report to its preliminary survey for improvements to the system.

The report and accompanying graph details annual peak load increases at an average per year of 8.7 percent.

Biggest jump occurred between the years 1950 and 1951, a gain of 15.8 percent. Next big increase was between 1953 and 1954 when the peak load demand escalated 12.6 percent. The next year the increase was 11 percent. Between 1958 and 1959 the jump was 9.2 percent and between 1959 and 1960 it was 10.2 percent.

The engineers estimate the peak load demand at 5740 in 1965 and 9240 kilowatts in 1970.

Local News Bulletins

BAKE SALE
Kings Mountain Garden club is sponsoring a Christmas bake sale on Saturday, Dec. 9th, from 9 until 11:30 a. m. at Plonk Brothers. The club will offer a variety of Christmas goodies.

ROTARY CLUB
Ed Henry Smith will present the program at Thursday's meeting of the Rotary club. The civic club convenes at 12:15 for lunch at the Country Club.

OPTIMIST MEET
Rev. C. O. Green, home missionary for the Baptist Association in the North Carolina district, will be featured speaker at the Optimist Club meets in regular weekly sessions Thursday at 7:30 p. m. at First Baptist Church Fellowship hall.

CHURCH SUPPER
Christ the King Catholic church is sponsoring a spaghetti supper Saturday from 4:30 until 6 p. m. in the church educational building. Plates will be \$1.00 for adults and 50 cents for children.

AT CLASSES
Mrs. Billie G. Logan is in Charlotte this week attending federal, state and social security tax classes under sponsorship of federal and state agencies and N. C. State college.

SUNDAY DINNER
Sunday dinner will be served by the International and Public Affairs Department of the Woman's club Sunday beginning at 12 noon. Proceeds will go to the Exchange Student Fund. Ham, chicken and country-style steak plates are \$1.50 for adults and 75 cents for children.

TO VIRGINIA
Mr. and Mrs. Ben F. Moomaw leave Friday morning for Roanoke, Va. where Mr. Moomaw, superintendent of Kings Mountain National Military Park, will speak at a DAR dinner meeting at the Roanoke Country Club.

MCGINNIS IMPROVED
W. Hinkle McGinnis, Kings merchant, was improved Wednesday following his hospitalization Saturday for pneumonia, members of his family said.

GRASS FIRE
City firemen were called to the corner of Harmon Road and Bridges Street Monday afternoon to douse a grass fire. No property damage was reported.

LEGION TO MEET
Regular monthly meeting of Otis D. Green Post 155, American Legion, will be held Friday night at 8 o'clock at the Post building, according to Joe H. McDaniel, Jr., adjutant.

Methodist Choir To Sing Cantata

Central Choir Will Present "Bethlehem"

The annual Christmas Cantata, "Bethlehem" will be presented Sunday afternoon at 5 p. m. by the Central Methodist church 30-voice choir under the direction of Mrs. J. N. McClure, organist and director, assisted by Miss Mary Alice McDaniel at the piano.

This moving Christmas cantata features the traditional Christmas story in scripture and song with special soloists Mrs. Delbert Dixon, Mrs. Bill Allen, B. S. Peeler, Jr., Michael McSwain and Jacob Dixon.

A cordial invitation is extended by the church and its ministers, Rev. Herbert D. Gammon, to the people of Kings Mountain to attend the five o'clock service and hear once again, the beautiful Christmas Story in scripture and song.

Members of the choir are: Sopranos: Mrs. Delbert Dixon, Mrs. Jacob Dixon, Mrs. Bill Parsley, Miss Mary Alice McDaniel, Miss Winifred Fulton, Mrs. Bill Allen, Miss Pattie Howard, Miss Marilyn Dixon, Miss Ann McCune, Mrs. Eddie Campbell, and Miss Joan McClure.

Altos: Mrs. Y. F. Troneburg, Mrs. W. H. Dillingham, Mrs. Baxter Payseur, Mrs. W. A. Russell, Miss Mary Wright, Mrs. M. H. Biser and Mrs. Betty McCarter. Bass: B. S. Peeler, Jr., Delbert Dixon, Bill Allen, I. B. Goforth, Jr., Carleton B. Harris and Michael McSwain.

Tenors: W. A. Russell, William C. Parsley, Gene Patterson, Jacob Dixon, Arthur Walker and John Warlick.

Mrs. Keller's Rites Conducted

Funeral rites for Mrs. Julia Ann Keller, 87, widow of J. C. Keller, were held Saturday afternoon at 3 p. m. from Kings Mountain Baptist church of which she was a member.

Mrs. Keller died just after midnight Thursday after becoming ill suddenly Wednesday. Her husband died in October 1960.

A native of Cleveland County, Mrs. Keller was the daughter of the late Mr. and Mrs. Jesse Hord. She is survived by her sister, Mrs. E. W. Hord, and by several nieces and nephews.

Christmas Club Membership Gains

Membership in First Union National Bank's 1962 Christmas Club increased past the 350 mark during the past week, a gain of more than 150 during the past week, Mrs. Helen R. Blanton, assistant cashier, reported.

Mrs. Blanton said she hadn't completed tabulations sufficiently to be able to estimate the potential aggregate payment next November to Christmas Club members.

The membership rolls remain open and Mrs. Blanton said she hoped the membership would top the thousand mark.

Compact School 100 Percent UF

Teachers at Compact David-son consolidated school contributed in the 100 per cent category to the Kings Mountain United Fund this week with a total of \$212.50. The sum brought the United Fund collection total to \$3,801.06.

The figure represents an average contribution of \$20.62 per teacher at the school.

Tom Burke, treasurer, said in reporting the donation, "This is the best record of any group contribution to the fund since its founding."

Stressing one goal, one donation, the United Fund campaign seeks what it terms a fair donation from all citizens. Hourly workers are asked to contribute 12 hours pay for the year. Salaried workers are asked to contribute one percent of their annual salary.

The United Fund has nine participating agencies. They are:

(Continued On Page Eight)

Mayor Asked To Compile Fieldhouse Bill Of Costs

Highway Chief's Time Not Own

J. Clint Newton, Jr., State Highway commissioner, gave a humorous description of the fact a highway commissioner's time isn't his own in an address at the Lions club Tuesday night.

Referring to citizens living on one of Cleveland County's 537 miles of unpaved rural roads, he laughed, "You know these hard-working Cleveland County farmers get up about 4 o'clock in the morning and they think that by 7 to 8 o'clock it's nearing lunchtime. They want an audience and I give them one."

"However, I ask them if I can say my piece first and they almost uniformly grant my request."

(Continued On Page Eight)

Comm. Newton: U.S. 74 West Now Tagged "No 1 Priority"

Kiwanians Suggest Christmas "Gift"

Kings Mountain Kiwanians want to suggest a Christmas gift which they describe as "perfect for all ages."

What is it? A pint of blood. The Red Cross bloodmobile will be collecting these Christmas presents next Monday, December 11th, from 12 noon until 6 o'clock p. m. at the Woman's Club.

The Kings Mountain Kiwanian club is playing Santa Claus and sponsoring the one-day visit.

Kiwanian John Cheshire is general chairman for the visit and is contacting donors from various local industries.

Mr. Cheshire invited area citizens to give a gift this Christmas that's especially needed and for which there is no substitute.

Four Students Win Diplomas

Four Kings Mountain students were among the 245 graduates of King's College, Charlotte, who received their diplomas at the recent 61st annual commencement.

They were Brenda K. Bridges, junior accounting; Norman Bumgardner, junior accounting; Cumie Jean Moore, general business; Martha Louzelle Smith, junior secretary.

This year's graduating class was one of the largest in the history of the Charlotte institution.

(Continued On Page Eight)

Pending Text Democratic Leaders Like Plans To Up Party Strength

A sampling of Democratic political leaders indicates general approval of plans to strengthen the party throughout the state, though all say they want to read the text of the proposals before making definite statements on the particular proposals.

Mrs. J. E. Lipford, of Kings Mountain, vice-chairman of Cleveland County Democrats, commented, "I feel that recommendations approved by the party's leaders, Governor Sanford, Chairman Bennett and Secretary of State Eure are designed to benefit the party. I particularly like the idea of going to the 'grass roots' for party strength."

Representative Jack Palmer, of Shelby, noting he would await the text for final decision, said, "I feel there is room for improvement in the party organization." He wondered aloud as to what range the recommendations to "purge" members who stray would extend and also whether women with sufficient political interest could be obtained to furnish half of the 100 county executive committees.

J. Ollie Harris, Cleveland County and chairman of East Kings Mountain precinct, said many of the recommendations "look good on face." Some, he said, would require the full text before his final decision.

Secretary of State Thad Eure served as chairman of a special committee and said copies of the recommendations, to be considered at next May's state convention, would be mailed to party leaders as quickly as obtained from the printers.

The revised plan would:

1) Retain the present form of the State Executive Committee.

2) Set up a new 22-member state campaign committee.

3) Provides methods for "purging" local party officials who fail to perform their duties or who go over to the opposition.

4) Gives women equal representation on county executive committees.

5) Gives the delegates to the state party conventions a voice in changing the party plan of organization.