

Special Pre-Christmas MOVIE PARTY!

At The JOY Theatre

— ALL NEW —

Full Length CARTOON FEATURE
To Delight Children of all Ages



NEVER SUCH
BEAUTY
SUCH COLOR

HEY KIDS — Win A Panda Bear

FREE!

Clip out this coupon, print your name and address below, deposit at the Theatre when you see "PANDA" — Drawing will be held TUESDAY, DECEMBER 24.

Name Age

Address Phone

ATTENTION PARENTS!

Your children will enjoy this WONDERLAND OF CARTOON entertainment. This theatre is presenting this program in a special effort to give you a place to leave your kiddies while you chase around doing your shopping—

ALL SEATS 50c



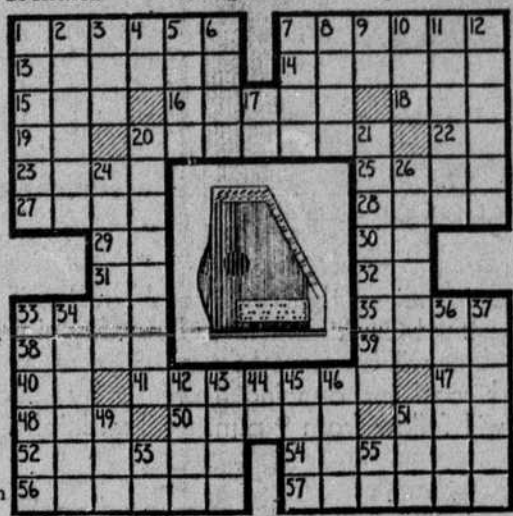
Sun. - Mon. - Tues., Dec. 22-23-24

WEEKLY CROSSWORD PUZZLE

Musical Instrument

- | | |
|---------------------------------|-------------------------------|
| HORIZONTAL | VERTICAL |
| 1 Depicted musical instrument | 1 Heavenly belt |
| 7 It is the form of the cittern | 2 Preser |
| 13 Bird | 3 Metal |
| 14 Thoroughfare | 4 Exclamation |
| 15 Put on | 5 Otherwise |
| 16 Because | 6 Check |
| 18 Expire | 7 Spice |
| 19 Preposition | 8 Above |
| 20 Cores | 9 Down |
| 22 North Dakota (ab.) | 10 Finlir |
| 23 Air (comb. form) | 11 Destroyed |
| 25 Brother of Cain (Bib.) | 12 Sewing implement |
| 27 Stuff | 17 Nylon (ab.) |
| 28 Was borne | 20 Vies |
| 29 Spain (ab.) | 21 Pilchards |
| 30 Accomplish | 24 Slice of bacon |
| 31 Pronoun | 26 Kicked |
| 32 — is a stringed instrument | 33 Newspaper library |
| 33 Encounter | 34 Selfishness |
| 35 Require | 36 Woman |
| 38 Monster | 37 Make mad |
| 39 Rim | 42 Measures of cloth |
| 40 Artificial language | 43 Regrets |
| 41 Mexican shawls | 44 Near |
| 47 Type measure | 45 Equal |
| 48 Tap | 46 Domestic slave |
| 50 Stringed instruments | 49 Seize |
| 51 Before (prefix) | 51 American poet (ab.) |
| 52 Employable | 53 Branch office |
| 54 Prescribe | 55 Justice of the peace (ab.) |
| 56 Raise a design | |
| 57 Iterate | |

Here's the Answer



AGRICULTURE IN ACTION

You never forget a few kind words. Like the ones spoken without dissent by all the voting delegates to the recent American Farm Bureau annual meeting.

The words: "We support the current tobacco program." Also: "We support the present peanut program."

Now, these words are "kind" because most of the delegates to the convention don't come from North Carolina, where we put a whole lot of stock in these two crops. This put us in a kind of precarious position, considering that North Carolina is entitled to only five convention delegates.

Precarious except for one thing. The folk from other States give us their support.

We must keep their support to keep our programs. And we're going about it in the right way. In the first place, they know we want the programs, and we speak with decisive unity on this point. In the second place, Farm Bureau in the south eastern states is getting stronger by the day. We can flex our muscles.

There's a real story here. The American Farm Bureau gained some 20,000 additional farm families this year, boosting member-

ship to an all-time high of 1,629,295. The Southeastern states contributed over half of this gain! (About 10,000) And the North Carolina Farm Bureau, which has now posted five consecutive years of membership growth, accounted for about 1,000 of these new farm families.

There are many more stories to come out of a meeting which brings together 6,000 farmers. These stories will be told.

But suffice it to say right now that the North Carolina delegation posted a real good score at the convention. And we will continue to say kind words about those who say kind words about our programs. It's just the proper thing to do.

Piedmont Baptist Program Sunday

Piedmont Baptist church will present a Christmas play, "His Name is Jesus", Sunday night at 7 p.m. at the church on Benfield and N. Piedmont Avenues.

The program is under direction of Mrs. Dewitt Guyton, Mrs. G. W. Splawn and Miss Brenda Humphries.

Church Officers Are Installed

Newly-elected elders and deacons were installed at First Presbyterian church at special services Sunday morning.

Ordained and installed as elders were Herman Campbell and Paul Mauney, P. Wilson was installed as an elder, having previously served as an elder prior to his coming to Kings Mountain. Installed as deacons for the Class of 1966 were W. B. Grimes, B. Manley Hayes, Jr., Henry P. Neisler and P. O. Southwell. Cicero Falls and R. S. Lennon were installed to fill the vacancies in the Class of 1965.

Cattle raised by the Bantu tribes of the Congo are almost never slaughtered for food, because they are a symbol of wealth. According to the Book of Knowledge, cattle in the Congo are also a source of milk, fuel, and what is called "Bridal wealth", a gift sealing a marriage contract.

SOCIAL SECURITY

Questions and Answers

Q—I own a dairy farm and hire two men. When I report wages paid to my farm workers at the end of the year, may I include my own farm income and pay my social security taxes?

A—No. You as the farm owner are self-employed. You must report your net income on Form 1040, Schedule F and Schedule SE in order to get credit for your farm earnings. Do not include your earnings on the Form 943 when you report your farm workers' wages.

Q—I work on a farm and the owner pays me sometimes by giving me farm produce, such as butter, eggs, and milk. Should I report this as wages for social security?

A—No. Only cash pay is considered wages for agricultural labor.

Q—I recently purchased a dairy farm and hired two employees to work full time. How often should I send Form 941 to the Internal Revenue Service?

A—First of all, you should use Form 943 instead of Form 941 for reporting agricultural wages. Secondly, Form 943 should be submitted to the Internal Revenue Service once a year. Reports for the year 1963 are due by January 31, 1964.

Choral Group To Sing Cantata

The Kings Mountain high school Mixed Chorus will present a Christmas program during an assembly Friday in the school auditorium.

Included in the program will be selections by a 37-member choir from the choral group which is under the direction of Mrs. J. N. McClure and Mrs. Juanita Logan.

The Choir will also sing the Cantata "Song of Christmas" and the 100-member Chorus will also join in the program with numerous carols and other selections.

Soloists with the group are Teresa Jolly, Freida Bowen, Teresa Dixon, Gerald McDaniel and Joe Bumgardner. Libby Alexander will be piano accompanist.

Nazarenes Set Sunday Program

The annual Christmas program at First Church of the Nazarene will be held Sunday night at 7 p.m., Rev. H. G. Clayton has announced.

A children's Christmas program will consist of recitations and songs. Young people of the church will present a 60-minute pageant, "Strangers In Bethlehem". The 10-member cast is under direction of Miss Beatrice Moss.

Following the pageant Sunday School treats will be distributed to all members of the Sunday School, as well as exchanges of gifts placed under a Christmas tree.

The Chinese Zodiac, like that of most Western countries, is divided into twelve symbols, according to the Book of Knowledge. The Chinese zodiac signs are the rat, ox, tiger, hare, dragon, serpent, horse, sheep, monkey, hen, dog and pig.

Bessemer City Kings Mountain DRIVE-IN THEATRE

THURS. - FRI. - SAT. 6 BIG HITS!

"MOTOR-A-RAMA"

One "CHECKERED FLAG"

Two "ROARING ROADS"

Three "THE YOUNG RACERS"

Four "SPEDWAY"

Five "A RACE FOR LIFE"

Six "THUNDER ROAD"

Robert Mitchum SUN. - MON. - TUES. 2 BIG HITS!

One "COURTSHIP OF EDDIE'S FATHER"

Two Glenn Ford Shirley Jones Stella Stevens

Two "THE MAGNIFICENT SEVEN"

Color — Yul Brynner Steve McQueen

CHRISTMAS COUNTDOWN

Santa's sleigh's ready for "blast-off!" Still time for these exciting appliance gift buys, though! Special "last minute" Christmas savings!

5 DAYS ONLY!



A FRIGIDAIRE Refrigerator will add hours of pleasure to her life... and yours!



40-Piece Stainless Steel Tableware Set By International when you buy a 1964 FRIGIDAIRE Refrigerator

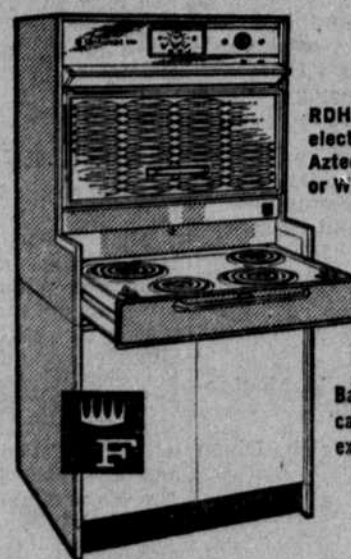
- Beautiful new "Hollow-Ware" Style!
- 40-Pieces, service for 6!
- Plus Convenient Storage Drawer Tray!

LIMITED-TIME OFFER!

No Down Payment

Terms To Suit Your Budget

Lowest priced Flair by FRIGIDAIRE!



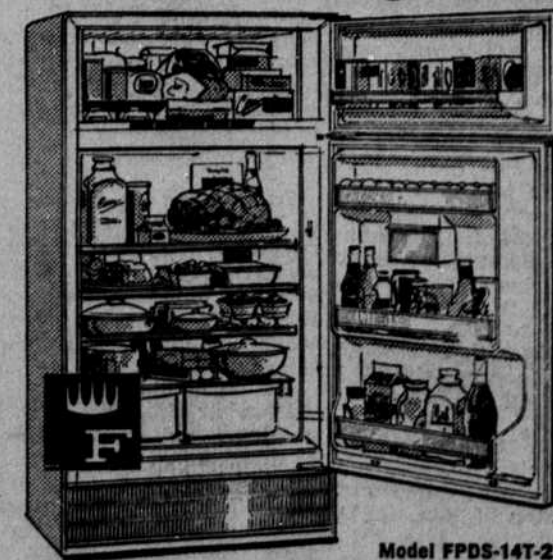
RDH-630, 30" electric Aztec Copper or White

Base cabinet extra

- Dramatically beautiful—looks built-in but simply slides into place as easily as conventional range.
- Glass oven door glides up to open out of the way—lets you see in to check a cake as you bake!
- Cook-Master automatic oven control minds oven cooking for you.
- Roll-To-You cooking surface glides out.

\$298.88 EXCHANGE

Lowest-priced FRIGIDAIRE Frost-Proof Refrigerator!



Model FPDS-147-2 13.81 cu. ft., 4 colors or white

- No frost, no defrosting ever, even in freezer! Packages never stick together. A delight to use.
- Big 100-lb. zero zone top freezer.
- Twin vegetable Hydrators hold nearly 3/4 bushel.
- Roomy storage door has space for eggs, even 1/2-gal. cartons.
- Every shelf full-width, full-depth.

\$298.88 EXCHANGE

GIVE NEW SAMSONITE SENTRY

The luggage that comes to attention... smartly!

Starting at only \$19.95



Samsonite Sentry is lavished with fashion-freshness...vivid new colors... lively new linings...hidden locks. Its dent-resistant body, strong magnesium frame, scuff and stain-resistant coverings are there to keep its vivid look even after years of use. Expensive? Not at all. Give a matching set or any one of the individual pieces and put everyone in high spirits this Christmas. Eight striking colors.

- | | |
|--------------------------|---------|
| BEAUTY CASE | \$19.95 |
| LADIES' TOTE | \$19.95 |
| 21" LADIES' O'NITE | \$19.95 |
| LADIES' WARDROBE | \$32.95 |
| 30" FULLMAN CASE | \$32.95 |
| 21" COMPANION CASE | \$19.95 |
| TWO-SUITER | \$32.95 |
| THREE-SUITER | \$34.95 |

NEW EXCITING INTERIORS

FOR MEN: Long-wearing, high style linings with a pattern designed for masculine taste. New smart opened for the "man on the go."

FOR WOMEN: Gay, colorful, print patterns in long-wearing fabrics to harmonize with the beautiful new fashion exteriors.



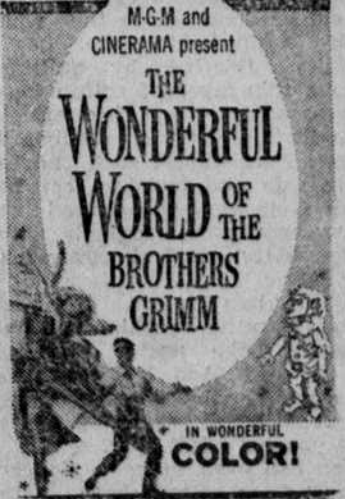
WED. - THURS.



WATCH! LISTEN! SHUDDER!

JULIE HARRIS - CLAIRE BLOOM RICHARD JOHNSON - RUSS TAMERLYN IN PANAVISION

FRI. - SAT. SPECIAL LIMITED ENGAGEMENT! UNCUT! ORIGINAL LENGTH!



M-G-M and CINERAMA present THE WONDERFUL WORLD OF THE BROTHERS GRIMM IN WONDERFUL COLOR!

SUN. - MON. - TUES.



WATCH FOR "Wheeler Dealers" "Palm Springs Weekend" "The Sword & The Stone"

Plonk's

McGinnis Furniture Co.

309 S. BATTLEGROUND • PHONE 739-4706