

Red And Green Symbols Of Season

The traditional colors of the Christmas season are red and green. Yet these colors have meant different things to different people over the ages. Color has been used as the symbol of abstract ideas from time immemorial.

In early and medieval Christian art colors had a mystic or symbolic meaning. Red indicated passion. In its good sense it was a symbol of divine energy and love and the creative power of the Holy Spirit; in its bad sense it was a sign of hate. In that meaning it became an emblem of Satan.

Emerald green is often the symbol of hope and growth in many Christian paintings.

Colors played an important role in medieval magic and su-

perstition. For example, the famous "philosopher's stone," which the alchemists thought would turn base metals into gold and cure all diseases, was thought to be colored red, according to the Encyclopedia Americana. Red was also a favorite curative color in more recent superstitions.

In Indonesia, the people think a piece of bright red coral will keep its owner's teeth in good order, and there are people everywhere who are sure that a person owning a ruby will live to a ripe old age.

Green was a sacred color among the ancient and medieval Egyptians who wore it as a symbol of hope and the joy of spring.

The Muslims carried this symbolism throughout the Middle East, and the faithful, on returning from the pilgrimage to Mecca, wear a green turban.

IT'S A SAVINGS BONDS HOLIDAY FOR LOVELY MRS. AMERICA



Mrs. Lyle Mitchell of San Diego, California dresses her Christmas tree with the "gift that keeps on giving," and even sews a huge stocking to hold an enlarged Savings Bond—all to help her extend holiday greetings and remind us that Savings Bonds make wonderful gifts for relatives and friends. "My husband and I practice what we preach. In his job at the telephone company he encourages his associates to buy Bonds regularly through the Payroll Savings Plan. We also give bonds to each of our five children on their birthdays and at Christmas time for their future education," she says.

Drive Safely During Holidays

Drive with the spirit of Christmas and avoid becoming one of the unlucky 13 victims who the North Carolina State Motor Club predicts will die on North Carolina streets and highways during the short Christmas and New Year's holidays.

Since both holidays fall in the middle of the week and will be officially counted as only one-day periods, the club combined its predictions of eight Christmas fatalities and five for New Year's.

The state will count its Christmas traffic deaths from 6 p.m. Tuesday, December 24, through Wednesday, December 25, and its New Year's fatalities from 6 p.m. Tuesday, December 31, through midnight Wednesday, January 1. However, since many companies are giving their employees at least two days off for Christmas and some three, the over-all total for the holiday season is expected to be considerably higher.

"Our estimate is based on past experience of motorists coupled

with current driving patterns," pointed out Thomas B. Watkins, president of the motor club and the National Automobile Association. "The number of fatalities during the holiday season will be reduced to the extent that motorists observe the basic safe driving rules."

Accident records show that the Christmas season claims more lives on the highway than any other holiday period. Christmas Eve is the most dangerous day of the year and December is the most dangerous month.

During the four-day Christmas-New Year holiday periods last year, the state counted 43 traffic deaths and 1,366 injured in a total of 2,384 accidents. Leading driver violations were: speeding, 42; failure to yield right of way, 353; driving on wrong side of road, 326; and following too closely, 216.

"Christmas won't be much fun for accident victims," Watkins cautioned. "So make courtesy your code of the road, stay alert and keep your holiday happy."

Snow Scenes Say Christmas

Where the sun shines bright, the air is balmy and never is heard the discouraging howl of a blizzard, Christmas is still a winter wonderland.

In northern climes the plaint is, "We just don't have snow for Christmas the way we used to," and even in climates where decorated palm trees substitute for evergreens and holiday picnics are more likely than sleigh rides, snow and plenty of it seems an essential part of the vision of the Yuletide.

Country snow scenes are popular greeting cards subjects and Christmas illustrations in Southern states, South American countries and many other places where snow seldom or never falls. Songs and stories tell of a Christmas world wrapped in wintry white.

It Was Rainy Season

The popularity and persistence of the "winter wonderland" idea seems more remarkable since "snow for Christmas" must have been improbable, if not impossible, as a part of the Holy Night. Rain was more likely, especially on the date officially celebrated as Christ's birthday, December 25 is right in the midst of the rainy season in Bethlehem.

Early art depicting the Nativity and the events following it was faithful to the probabilities. In these paintings, the shepherds watched in fields free of snow, and the Holy Family fled to Egypt under sunny skies, their route marked by palm trees. Later, snow appeared in paintings of the Holy Night.

White Means Purity

Part of the explanation may be that white, rather than red and green, was early chosen by churches as the color of Christmas. White is, of course, the symbol of purity and innocence, and a landscape white with snow thus becomes a proper expression of the true spirit of Christmas.

Other explanations may be found in the origins of Christmas customs. Many of the pagan rites which were absorbed into the Christian celebration came from Northern Europe and, if not associated directly with snow, at least reflected the need for warmth in winter.

The Yule log, for instance, became a part of the early Christmases, and certainly an open fire indoors is enhanced by a blanket of snow outdoors.

Had Snowy Source

Consider too, that a number of modern Christmas customs—the tree and its lights, for instance—came from Germany, where cold, snowy winters might logically contribute to the legends and lore of the season. The first

lighted tree was, supposedly, created by Martin Luther as a symbol of a starry sky on a snowy night.

In modern times Irving Berlin and Bing Crosby have substantially strengthened the vision of a "White Christmas." Bing singing Berlin's famous song is now a traditional part of the Yule season.

While many, perhaps most, people may be able only to dream of a white Christmas and create its semblance with cotton or spray-on snow, it's a safe assumption that the happiest season will continue to be envisioned as a snowy

Bonds Sales Continue High

North Carolinians continue to buy U. S. Savings Bonds in record volume.

November sales of Series B and H Bonds totaled \$4,301,517, an increase of nearly 14 percent over November of last year.

Cumulative sales for the state total \$46,954,759. This is over 5 percent greater than for the comparable 11 months' period of 1962 and amounts to 92.8 percent of the state's annual goal of \$50,600,000.

Twenty-two counties have already achieved their quota for this year, and others are close to making theirs. Sales in Cleveland County for November were \$38,709.00, for the year \$396,289.00 or 87.5 percent of its quota of \$455,400.00.

George Blanton, Jr., Cleveland County Volunteer Chairman for the Savings Bonds Program, said in making this release, "Our state is within reach of making its dollar goal for this year. This will be the first annual quota made in North Carolina in the peacetime history of the program. The 'extra' bonds purchased during December can make this achievement possible."

Silent Night

May all be calm and bright for you and your loved ones... now, at this happy time of Christmas!



Dellinger's JEWEL SHOP



Angels, bending near the Earth... in Heavenly chorus sang the joys of the first Noel. May your heart be filled with every Christmas joy.

Medical Pharmacy



A Merry Christmas

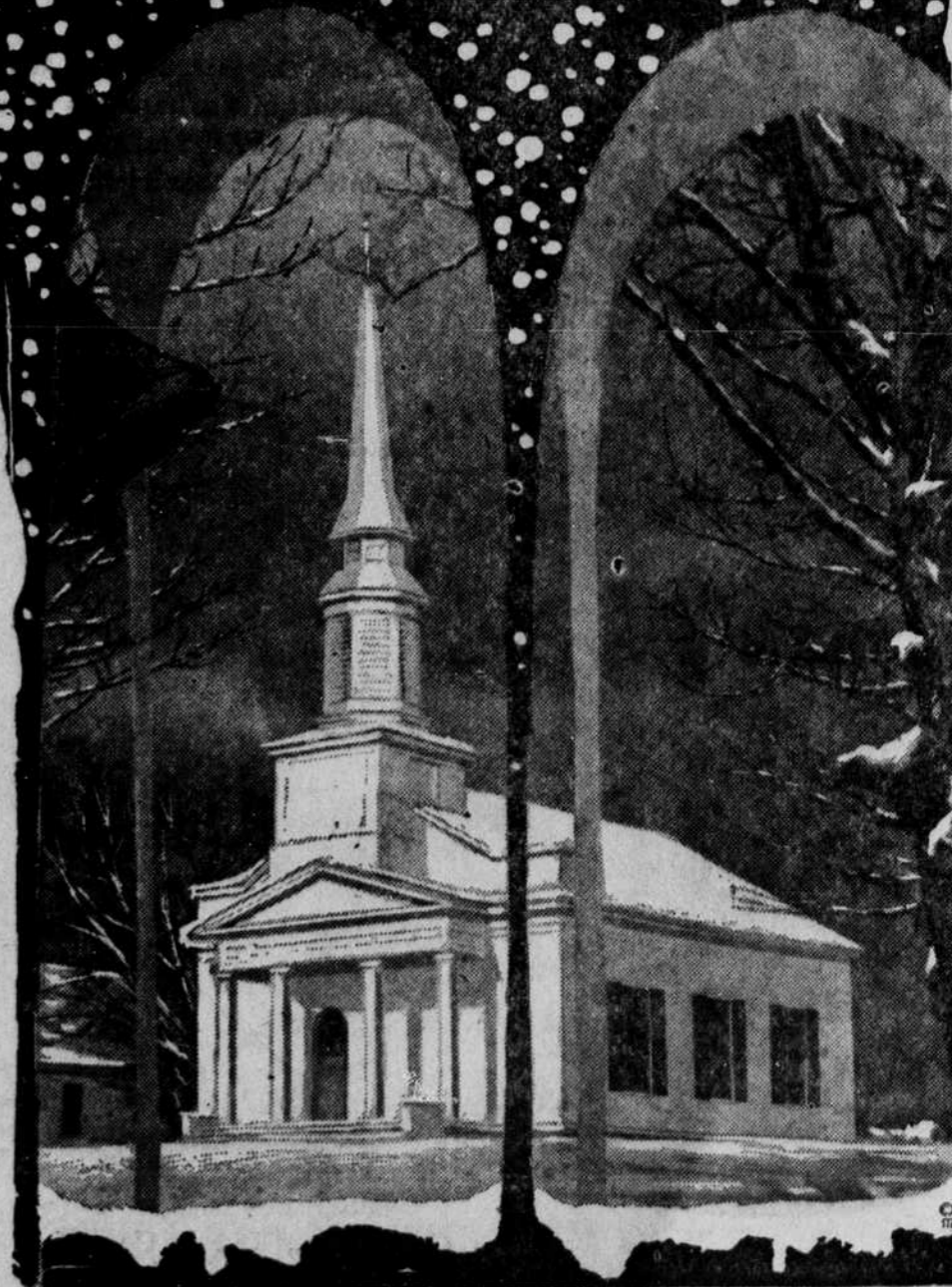
With genuine appreciation for your many favors and friendly good will, we take this opportunity to extend season's greetings and sincere good wishes for your holiday pleasure. May every festive hour be bright with joys as fresh as the smiling wonder on the faces of eager, happy children.

McGinnis Department Store

GREETINGS

...and good wishes to all

At the Yuletide, one of our greatest pleasures is to greet our many good friends with warm wishes for a season rich in the quiet peace of a winter landscape... the jubilant joy of a ringing bell. And may all the happiness of Christmas be yours.



VICTORY CHEVROLET CO.