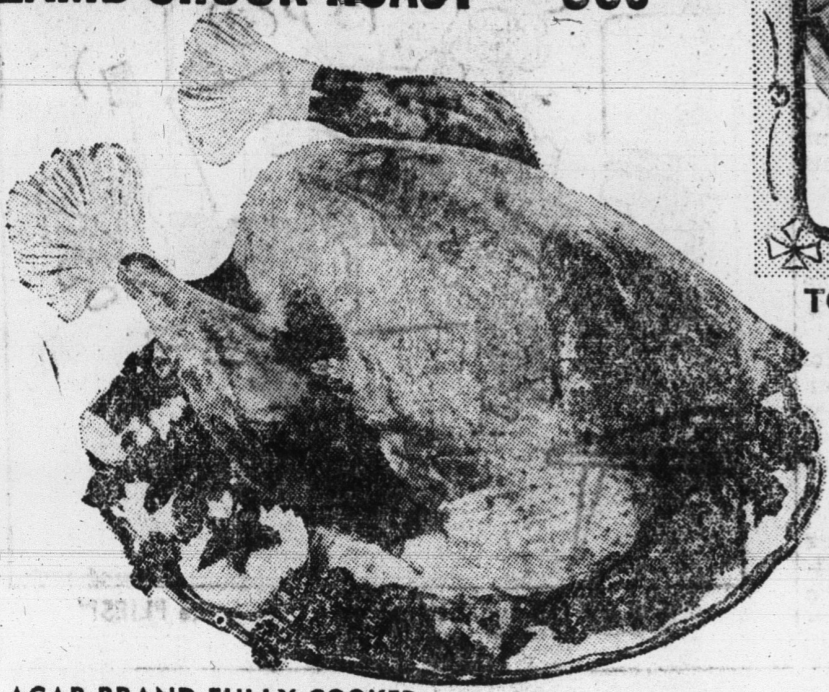


Traditional Favorites! "Super-Right Meats!"

"SUPER-RIGHT" QUALITY
LAMB LEG WHOLE PER LB. **73c**
 SHANK HALF lb. 83c BUTT HALF lb. 63c
LAMB CHOPS SHOULDER OR RIB LB. **69c**
LAMB CHUCK ROAST LB. **39c**



Easter HAMS

"SUPER-RIGHT" QUALITY SPECIALLY PRICED

SMOKED HAMS

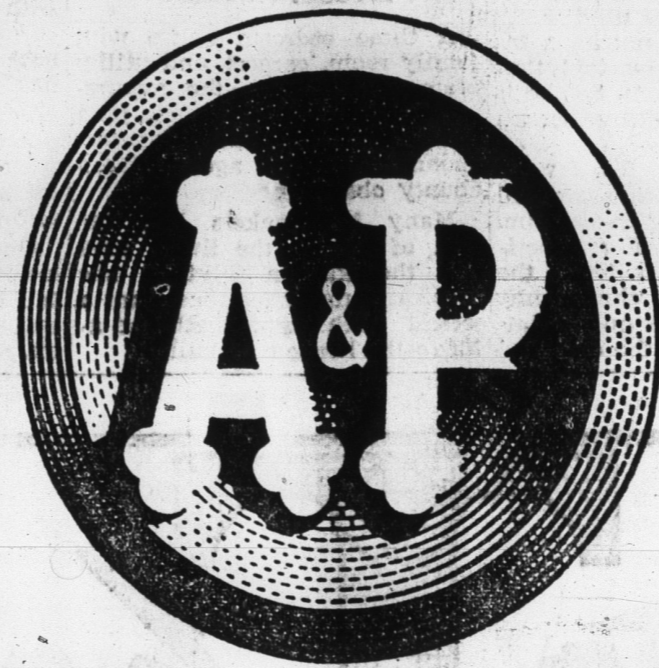
12 TO 16 LB. WHOLE / OR 6 TO 8-LB. AVG. SHANK HALF HAM LB. **59c**

CENTER SLICES **\$1.29** Shank Portion lb. 49c
 Butt Portion lb. 59c

TOP QUALITY—4 TO 22-POUND AVERAGE

YOUNG TURKEYS

LB. **39c**



AGAR BRAND FULLY COOKED
BONELESS HAM 5 Lb. Can **\$4.79**
 "SUPER-RIGHT" QUALITY DELICIOUS
ALL MEAT FRANKS 1-Lb. Pkg. **53c**
 ALLGOOD BRAND NO. 1 SMOKED FLAVORED
SLICED BACON 1-Lb. Pkg. **63c**

OCEAN SPRAY BRAND Cranberry Sauce 2 1-Lb. Cans **49c**
 GREEN GIANT BRAND GREEN PEAS 2 1-Lb. 1 Oz. Cans **43c**
 A&P BRAND GRADE 'A' FRUIT **COCKTAIL** 1-Lb. 14-Oz. Can **39c**

ALL PURPOSE **SMOOTH WHIP** 4 1/2 Pkg. **29c**

ANN PAGE MULTI-COLORED—ASSORTED MARSHMALLOW EGGS 12-Oz. Pkg. **29c** 1-Lb. 4 Oz. Pkg. **45c**
JELLY EGGS 1-Lb. Pkg. **29c**

WARWICK MILK CHOC. COATED DECORATED NUT & FRUIT EGGS 8-Oz. Size **35c** 12-Oz. Size **45c**
 ANN PAGE FRUIT FLAVORED CANDY **POPS** 8-Oz. Pkg. **29c**

RED SOUR PITTED A&P BRAND **PIE CHERRIES** 2 1-Lb. Cans **35c**
 SALTED, READY TO ENJOY A&P SPANISH OR EXCEL VIRGINIA CELLO PACKAGE 1-Lb. Pkg. **39c**
 CHOCOLATE, VANILLA, STRAWBERRY OR NEAPOLITAN
Marvel Ice Milk 2 1/2 Gal. Ctns. **75c**
Marvel Ice Cream 2 1/2 Gal. Ctns. **95c**

Fresh n Festive Produce!

FRESH CELERY HEARTS Easter Salad Value CELLO BAG **25c**
ALL PURPOSE CARROTS 2 Pound Bag **19c**
FRESH POLE BEANS lb. **19c**

LETTUCE

2 LARGE HEADS **35c**
 Fresh Yellow Squash lb. **15c**

ANN PAGE 8-OZ. SALAD DRESSINGS Each Bottle **25c**
 VALUE PRICED! FRESH **ASPARAGUS** lb. **29c**
 Value Priced Tasty Ideal for Salads and Snacks
STALK CELERY 2 Stalks **35c**

Coffee Sale!

MILD AND MELLOW **EIGHT O'CLOCK** 1-LB. BAG **63c** SAVE 6c
 3-LB. BAG **\$1.85** SAVE 14c
 RICH AND FULL-BODIED **RED CIRCLE** 1-LB. BAG **69c** 3-LB. BAG **\$2.05**
 VIGOROUS AND WINERY **BOKAR** 1-LB. BAG **73c** 3-LB. BAG **\$2.10**
 ANN PAGE SPARKLE **GELATINS** 4 3-Oz. Pkgs. **35c**
 NEW PACKAGE DESIGN ON A&P'S VACUUM PACKED — Specially **BLENDED COFFEE** Pre-Priced 2 Lb. Can **\$1.39**

JUST REDUCED!
 ANN PAGE CONDENSED **TOMATO RICE SOUP** 10 1/2-OZ. CAN **10c**
 NO LIMIT ON PURCHASES!

HEARTY AND VIGOROUS — OUR OWN 48-Count 3 3/4-Oz. Pkg. **43c**
TEA BAGS
 NEW! A&P STANNOUS FLUORIDE **TOOTH PASTE** 7 1/4-OZ. TUBE **49c**
 IT'S 100% A&P QUALITY... AND YOU SAVE AT THIS LOW PRICE.

Ann Page Mayonnaise 8-Oz. Jar **53c** Morton Cream Pies FROZEN VARIETIES 3 14-Oz. Pkgs. **89c**
 Sultana Mayonnaise 8-Oz. Jar **45c** RICH WHIP TOPPING 10-Oz. Can **39c**
 ELBOW MACARONI ANN PAGE 2 Lb. Pkg. **35c** BONESSE SHAMPOO 8-Oz. Bottle **65c**
 WHITE HOUSE EVAPORATED MILK 6 13-Fl. Oz. Can Ctn. **87c** SAIL LIQUID DETERGENT 12-Oz. 21c Quart Bot. 1-Pt.-6 Oz. **35c** **45c**

POUND CAKES GOLD OR MARBLE 1-LB. 9-OZ. CAKE **53c**

JANE PARKER FRESHLY BAKED **PECAN PIES** 1-Lb. 4-Oz. Pkg. **53c**
LEMON PIES 1-Lb. 8-Oz. Size **39c**
RAISIN BREAD ICED 1-Lb. **29c** REGULAR 1-Lb. **23c**

A&P Super Markets
 Baker's Angel Flake COCOANUT 3 1/2-Oz. Size **25c** 14-Oz. Size **63c**

Store Hours Thursday 8 a.m. to 6:30 p.m. Friday 8 a.m. to 7:30 p.m. Saturday 8 a.m. to 7 p.m. CONVENIENT PARKING

This Is The Law

By ROBERT E. LEE
 (For the N. C. Bar Association)
 CLASSIFICATION OF CRIMES

What is the difference between a felony and a misdemeanor? The terms are defined in the statutes of North Carolina as follows: "A felony is a crime which is or may be punishable by either death or imprisonment in the State's prison. Any other crime is a misdemeanor."

The nature of the punishment determines the classification of crimes. In general, felonies are crimes that are of a more serious nature than misdemeanors. The distinction is more or less arbitrary, because the statutes have added to the list of felonies some crimes that are generally not considered serious and to the list of misdemeanors some crimes that are by many persons considered quite serious. Furthermore, there are some instances where the statutes have specifically declared the offenses to be misdemeanors although they are punishable by imprisonment in the State's prison.

Lawyers and law enforcement officials have difficulty in remembering whether a particular crime is a felony or a misdemeanor. In the federal courts, a felony is any offense which can be punished by death or imprisonment for a term exceeding one year. This is why many persons are sent to the federal penitentiary for a year and a day.

A man committed murder thirty years ago. He was never brought to trial. During the intervening years he has been a law-abiding and respected citizen of his community. May he today be arrested and punished for the crime?

Yes. The statute of limitations does not bar criminal prosecutions for most felonies. As a consequence, it is never too late to bring to trial one who has committed a serious criminal offense. All misdemeanors, other than those classified as "malicious," must be presented or found by the grand jury within two years after the commission of the same. Therefore, if you committed a traffic violation more than two years ago and an indictment has just been brought, your attorney should be able to clear you of the charge by pleading the statute of limitations or bringing it in apt time to the attention of the court.

What is the meaning of the term "capital crimes"? Crimes punishable by death are frequently called "capital

crimes." There are four such crimes in North Carolina: murder in the first degree, burglary in the first degree, rape, and arson.

If at the time of rendering its verdict in open court, the jury shall so recommend, the punishment for any of these crimes may be imprisonment for life in the State prison.

Potato Cutback Is Predicted

North Carolina farmers who had planned to reduce or omit sweet potato plantings this year may want to reconsider in view of prospects for a reduction in national acreage.

"It could be a good year to be in sweet potato production," comments Henry Covington, extension horticultural specialist at North Carolina State University.

Covington explains that it is normal for acreage to drop following a year when production is high and prices low. Last year was a relatively low price year. Reports of farmer intentions indicate that 1966 acreage will be down.

Tar Heel farmers are expected to plant about 21,000 acres, or 1,000 fewer than they planted last year. "No state is expected to plant more sweet potatoes than they had last year," Covington related.

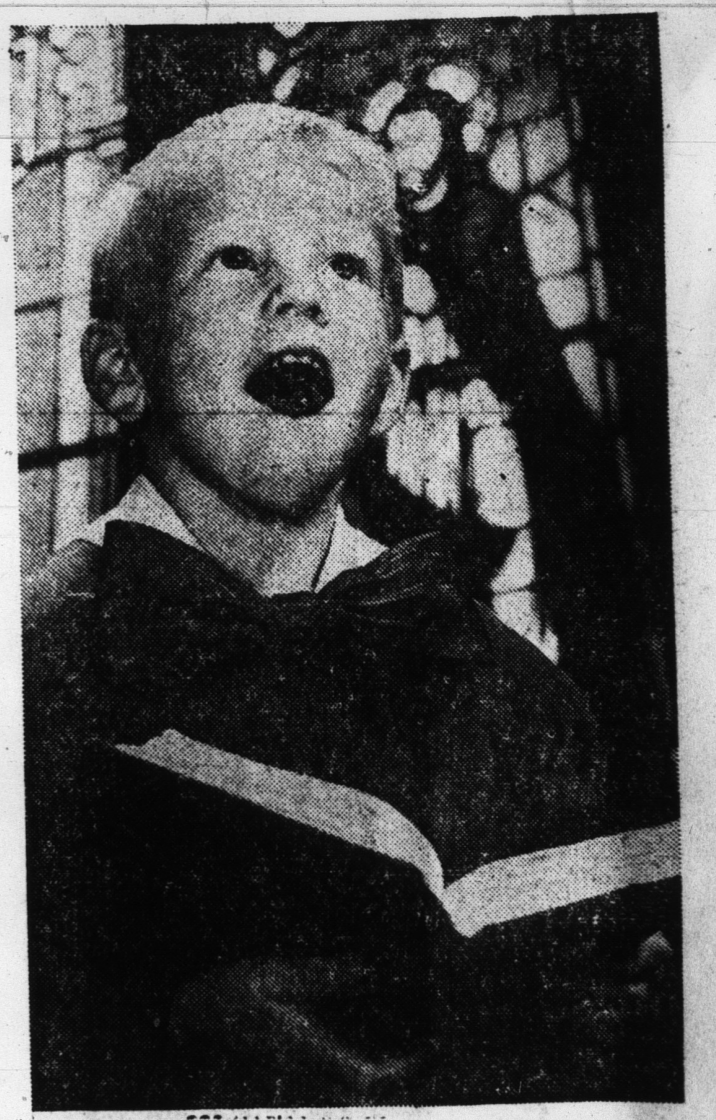
New Jersey and Virginia join North Carolina as states where planting reductions are anticipated. Louisiana, Texas, Mississippi and Georgia are expected to plant about the same acreage as a year ago.

The total U.S. acreage, based on grower intentions, will be around 200,600 acres. Last year it was 205,400.

Covington believes some farmers may be making a mistake by eliminating sweet potatoes from their farm. "A man shouldn't get in and out of sweet potato production year after year," the specialist said. "I believe a farmer will do better by staying with the crop, planting as much acreage as he can do a good job with."

Commenting on the tradition of growers cutting acreage or going out of production following a poor year, Covington commented that, "Because prices were low in 1965 doesn't mean they will be low this year."

He added that last year's conditions may not be repeated, which could lead to lower national production. "Just about everybody had a good crop last year," he said. "Growing conditions were very favorable."



It is our privilege to extend sincere greetings and warm good wishes to our many valued friends for a truly glorious and inspiring Easter.

McGINNIS
 Department Store