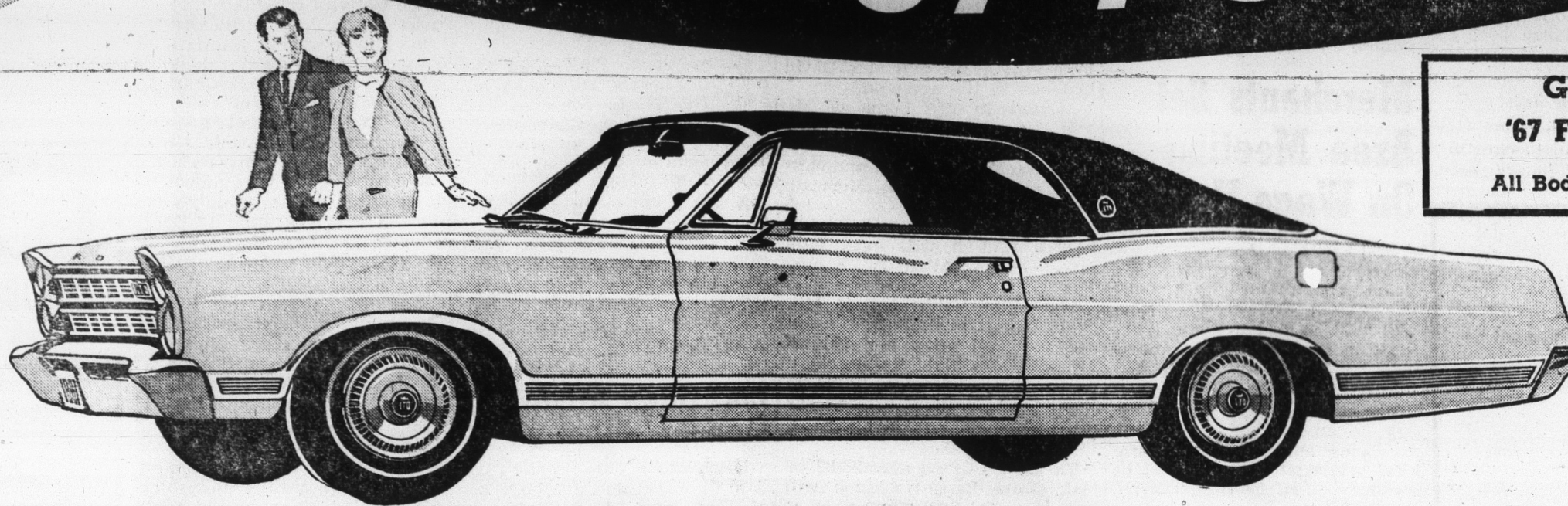


RIDE THE NEW WAVE OF '67 FORDS!

WE'RE ANXIOUS!

Now's The Time To Really
Get A Good Deal . . . We
Want To Get The '67's Rolling.
EXTRA LONG TRADES!



**GOOD SELECTION OF
'67 FORDS NOW IN STOCK!**
All Body Styles For Immediate Delivery!

1967 Ford LTD 2-Door Hardtop —
one of the world's quietest luxury cars.

"YOU'RE AHEAD ALL THE WAY IN A FORD"

24 MONTHS - 50,000 MILES

FACTORY WARRANTY ON FORD MOTOR COMPANY CARS AVAILABLE ON ALL 1964, 1965, AND 1966 MODELS

- | | | |
|---|---|---|
| <p>1964 FALCON 2-DR. HARDTOP \$1495
V-8 engine, 3-speed transmission. All vinyl trim, new tires.</p> | <p>1966 MUSTANG HARDTOP \$1995
This owner's loss is your gain. V-8 engine, straight drive, gsw tires.</p> | <p>1966 FAIRLANE GTA 2-DR. \$2595
Hardtop 390 V-8, new tires, clean, like new.</p> |
| <p>1963 FORD GALAXIE 500 4-DR. \$1195
V-8, Cruise-O-Matic transmission, radio, new tires.</p> | <p>1966 GALAXIE 500 2-DR. HARDTOP .. \$2695
390 V-8, Cruise-O-Matic, power steering, factory air conditioning.</p> | <p>1961 CHEVROLET STA. WAGON \$695
V-8, automatic drive, everything's been checked. It's okay.</p> |
| <p>1963 COMET 2-DR., 6-CYL. \$995
Straight drive, sharp car, good tires, economy plus looks.</p> | <p>1966 THUNDERBIRD LANDAU SPECIAL
All options such as air conditioning, power steering, power windows, etc.</p> | <p>1965 MUSTANG 2-DR. HARDTOP \$1995
V-8, automatic drive, power steering. It's a beauty.</p> |
| <p>1961 FORD GALAXIE 4-DR., V-8 \$695
Automatic drive, local car.</p> | <p>1965 FORD 4-DR. SEDAN \$1995
V-8, power steering, power brakes, factory air conditioning. New whitewall tires. Perfect for that family car. Local car, low mileage.</p> | <p>1965 CHEVROLET 1/2-TON PICK-UP \$1595
New tires. Everything is OK.</p> |
| <p>1966 COMET 2-DR. HARDTOP \$2195
V-8 engine, clean inside and out. You just can't get a better buy.</p> | <p>1964 CHEVROLET IMPALA 4-DR. \$1895
Hardtop V-8, automatic drive, power steering, factory air conditioning, new tires. Local car.</p> | <p>1965 CHEVROLET 1/2-TON PICK-UP \$1495
Large wheelbase, good tires.</p> |
| <p>1965 MUSTANG HARDTOP \$1795
This little pony can be bought right. V-8 engine. Many extras.</p> | <p>1966 FORD GALAXIE Now At Your Offer
500 4-Door Sedan. Executive car. All equipment, V-8, automatic drive, power steering, factory air, stereo tape, plus many others.</p> | <p>1966 FORD GALAXIE 500 Get A Good Buy
2-Door Hardtop V-8, power steering, Cruise-O-Matic, executive demonstrator, low mileage.</p> |
| <p>1965 CHEVELLE 2-DR. HARDTOP \$1895
V-8, automatic drive, a good buy. Cleaned up and ready to go.</p> | | |

— PLUS MANY LOWER PRICED MODELS OF YOUR CHOICE —

SOUTHWELL FORD

"THE SOUTH'S LARGEST LITTLE FORD DEALER"