

### Frames Protect Tractor Drivers

Statistics indicate that at least 20 Tar Heels will die this year for the lack of a simple safety device on farm tractors.

The safety device is a "protective frame," designed to protect tractor drivers against a crushing "roll-over."

Alarmed by the high rate of farm tractor deaths, tractor manufacturers and land-grant universities have been studying ways to make them safer.

Results of these studies show that at least three-fourths of all "roll-over" victims could be saved by a simple steel frame welded above and to each side of the driver.

"The Agricultural Extension Service now recommends that such a protective frame be placed on all farm tractors," said Eustace Beasley, extension agricultural engineer at North Carolina State University.

"Statistics from the N. C. State Board of Health show that 44 people were killed in the state last year in tractor accidents," Beasley explained. "Of this number, 29 were killed in tractor overturns."

While the U. S. Department of Agriculture and the National Safety Council estimate that at least three-fourths of these roll-over victims could have been saved, actual experience with protective frames in Sweden shows the percentage to be much higher.

Sweden has required protective frames or cabs on all farm tractors delivered since 1959. As a result, only one driver was reported killed in 35 tractor overturns since that date, and he died while trying to jump from the tractor.

"All major tractor manufacturers are now designing and testing protective frames for their most popular new tractor models," Beasley said.

"Protective frames for some models of tractors are already on the market. One estimate is that these frames, along with seat belts, will cost from about \$110 to \$360, depending on the tractor size," Beasley added.

"The cost of this protection is small in comparison to the poten-

tial savings in life, injury, medical costs, and property damage," he stressed.

"So far, I've seen no commercial farm tractors in North Carolina with such equipment. I have seen some tractors with cabs to protect the driver against weather. But tractor owners should realize that many of these cabs will not protect the driver against over-turns."

Norway, Denmark, and Finland have joined Sweden in requiring protective cabs or frames. Great Britain will require frames or cabs on tractors sold or rented after Sept. 1, 1970.

### Disposable Home Furnishings Now On Market

RALEIGH — Disposable house furnishings, such as furniture, curtains, draperies, tablecloths, bedspreads and even rugs, have arrived for home use, says Mrs. Lillie B. Little, extension housing and house furnishings specialist, North Carolina State University.

These furnishings, made of paper or nonwoven fibers, are expected to perform in short-term; not long-term situations.

Short-term furnishings could be an answer for the young couple who cannot and does not wish to put much money immediately into permanent furnishings, Mrs. Little believes. They can prove useful in apartment living or for fixing up a college room or rented house.


Another use for disposable furnishings is children's rooms, since this type of furniture is soon outgrown. Though of paper construction or nonwoven fibers, these items are built sturdy enough to last for the time they will be needed.

"There's not much point," Mrs. Little says, "to talk of paper furnishings that can be drycleaned or restored to last a long time. The main idea is disposability."

Lower prices are the lure for short-term furnishings. Cost of paper or nonwoven fiber products currently range from low to moderate depending on production costs. Pricing and disposability will have to be closely linked if these furnishings are to be popular, she says.

Currently attention is being focused on the need for better labeling so consumers buying disposable furnishings will know what they're getting. Also these furnishings are being given tests to make sure they meet the standards set by the Flammability Act, for fire-prevention.

Having A Wedding?  
Call Paul Lemmons  
Phone 487-4502  
Photographer

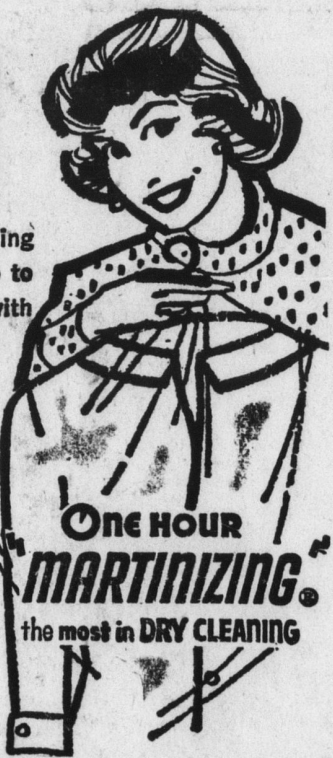


### YOUR CLOTHES CAN LAST LONGER LOOK LOVELIER

It's a fact. Dry cleaning makes clothes last up to twice as long! And with Martinizing, your clothes get personal care that restores them like new.

Everyday - Special SHIRTS  
Folded or on Hangers ONLY

25c



### "FREE" STORAGE

We have a large storage space especially for summer storage. Your winter clothes will be cleaned, mothproofed and stored. This Fall we will press and finish for you at your convenience. There is no extra charge for this service. This Fall when you pick up your fresh pressed clothes you pay only our regular dry cleaning price.

### MON.-TUES.-WED. "SPECIALS"

MEN'S OR LADIES' 2 PIECE SUITS ..... Only 85c

• TROUSERS • SPORT COATS •  
• PLAIN SKIRTS • OR SWEATERS •

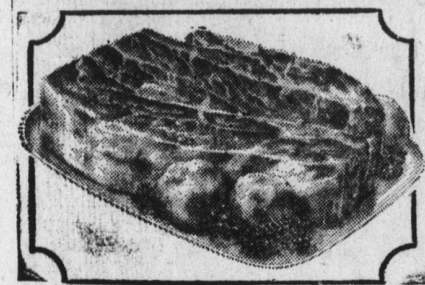
ANY 3 MIX OR MATCH \$1.15

LADIES DRESSES ..... 85c

### Sizzlin' Good "Super-Right" Meats!

"SUPER-RIGHT" GOVERNMENT INSPECTED HEAVY CORN-FED BEEF

# ROASTS



BONE-IN CHUCK 37<sup>c</sup> LB.

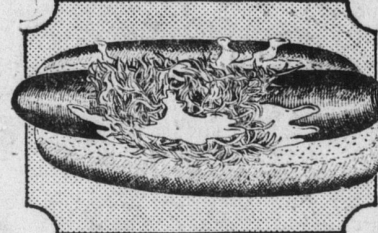
PRICES IN THIS AD ARE EFFECTIVE THRU SAT., JULY 20th

- "SUPER-RIGHT" HEAVY CORN-FED BEEF Boneless Chuck Roast Lb. 57c
- "SUPER-RIGHT" HEAVY CORN-FED BEEF Boneless Shoulder Roast Lb. 65c
- "SUPER-RIGHT" HEAVY CORN-FED BEEF CUBED CHUCK STEAK Lb. 89c
- "SUPER-RIGHT" HEAVY CORN-FED BEEF STEW BEEF Lb. 59c
- "SUPER-RIGHT" HEAVY CORN-FED BEEF GROUND BEEF Lb. 49c
- "SUPER-RIGHT" HEAVY CORN-FED BEEF GROUNDED CHUCK STEAK Lb. 59c
- "SUPER-RIGHT" HEAVY CORN-FED BEEF SHOULDER STEAK Lb. 65c
- "SUPER-RIGHT" LEAN, FRESHLY GROUND BEEF Lb. 49c

"SUPER-RIGHT" FRESHLY FROZEN CHOPPED BEEF STEAKS 2 Lb. Pkg. \$1.39

ALLGOOD GOVERNMENT INSPECTED Sliced Bacon 2 Lb. Pkg. 99c

CAP'N JOHN'S FROZEN Shrimp Cocktail 3 4-Oz. Jars 89c



# FRANKS

"SUPER-RIGHT" GOVERNMENT INSPECTED All Meat 1-Lb. Pkg. 49<sup>c</sup> ALL BEEF 1-Lb. Pkg. 59<sup>c</sup>

### Summer Savings! A&P Groceries!

# PEACHES

GUARANTEED TO PLEASE YOU! 3 1-Lb. 13-Oz. Cans \$1.00

- A&P APPLE SAUCE 3 1-Lb. Cans 49c
- IONA PORK & BEANS 10 1/2-Oz. Can 10c
- SULTANA WHOLE TOMATOES 2 1-Lb. Cans 37c
- A&P DRINKS 3 46-Oz. Cans \$1.00

MILD AND MELLOW EIGHT O'CLOCK 1-LB. BAG 49<sup>c</sup> 3-LB. BAG \$1.45



### Oven-Fresh Jane Parker Buys!

JANE PARKER — DESSERT PERFECT! MARBLE POUND CAKE 15-Oz. Pkg. 33<sup>c</sup>

- JANE PARKER — READY TO SERVE BLACKBERRY PIES 1-Lb. 8 Oz. Pkg. 39c
- JANE PARKER — SNACK PERFECT! PEACH CRUNCH CAKE 1-Lb. Pkg. 49c
- JANE PARKER — VALUE PRICED BABKA COFFEE CAKE 1-Lb. 14 Oz. Pkg. 89c

JANE PARKER COUNTRY STYLE ENRICHED BUTTERMILK BREAD 2 1/2 LB. LOAVES 49<sup>c</sup>

- 5-DELICIOUS FLAVORS — MARVEL ICE MILK 1/2-Gal. Ctn. 43c
- A&P WHOLE LEAF OR CHOPPED SPINACH 10-Oz. Pkg. 10c
- A&P "OUR FINEST" SHOE STRING POTATOES 2 20-Oz. Pkgs. 39c
- A&P "OUR FINEST" POTATO MORSELS 2 1-Lb. Pkgs. 39c

- FOR OUT DOOR LIVING 24 Inch Model 4018 FOLDING GRILL \$6.49
- 24 Inch Model 5054 Motorized Grill \$11.99
- 16 Inch PICNIC GRILL \$2.79
- 42 Inch LAWN TABLE \$13.95
- Lawn UMBRELLAS \$16.95
- Aluminum Folding CHAISE LOUNGE \$6.49
- Aluminum Folding CHAIRS \$3.49

### Tasty Pickin's—Fresh Produce!

★ YOUR CHOICE SALE ★ 3 LBS. 89<sup>c</sup>

- WHITE SEEDLESS GRAPES
- CALIFORNIA RED PLUMS
- FRESH, SWEET NECTARINES

- SERVE HOT! TOPPED WITH BUTTER YELLOW CORN 8 Ears 59c
- SERVE ICE COLD! SWEET, RIPE WATERMELONS Each 79c
- U. S. NO. ONE WHITE POTATOES 10 Lb. Bag 59c

IDEAL FOR BREAKFAST! SWEET, RIPE, CANTALOUPE 3 Large 27-Size \$1.00

