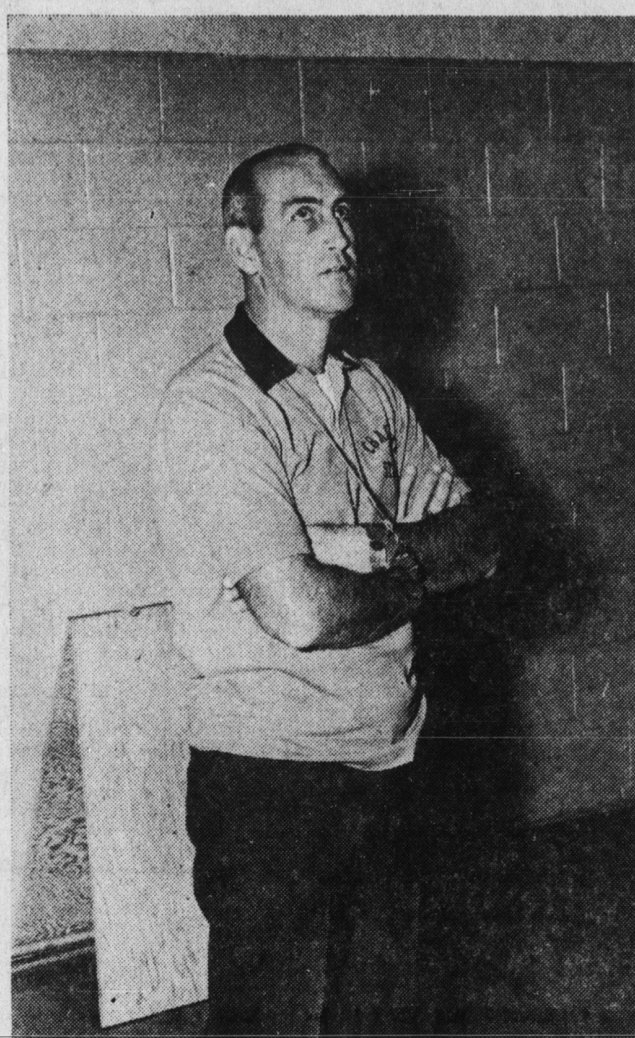




**GUIDE KINGS MOUNTAIN CAGE SQUADS** — Bob Hussey, left, and Blaine Froneberger return for their third year of coaching the Kings Mountain High School basketball teams. Hussey's Mountaineers, though small, are being 2 given a good shot at a



high finish, since three starters return off last year's team which finished 17-5 and second in the Southwestern Conference. Froneberger's girls are young and in the rebuilding stage.

## Hussey: Will Take Hard Work And Determination

Kings Mountain High School boys basketball coach, Bobby Hussey, says it will take "a lot of hard work, determination and patience" before the Mountaineers will be ready to meet Hunter Huss away on Dec. 2.

"Nobody's been real outstanding in practice," added the third-year Mountaineer mentor. "We're just working long and hard, trying to be decent."

Several players have joined the squad from the football team, which finished its season over a week ago.

Although no one has stood out in practice, several players have the potential and Hussey hopes it will be brought out before the season opener, which is rapidly approaching.

Even despite their lack of height, the Mountaineers, if they develop good shooting and quickness, among other things, could be a contender for the conference championship.

Unless something unforeseen develops, the Mountaineers will own the best player in the conference in senior Otis Cole, who averaged 21 points per game last year and who has made All-Conference since his sophomore season.

Several colleges have expressed interest in the sharpshooting Cole, who is a guard by nature, but will

probably be a center this year regular season play on Dec. 8 at because of the Mountaineers' lack South Point.

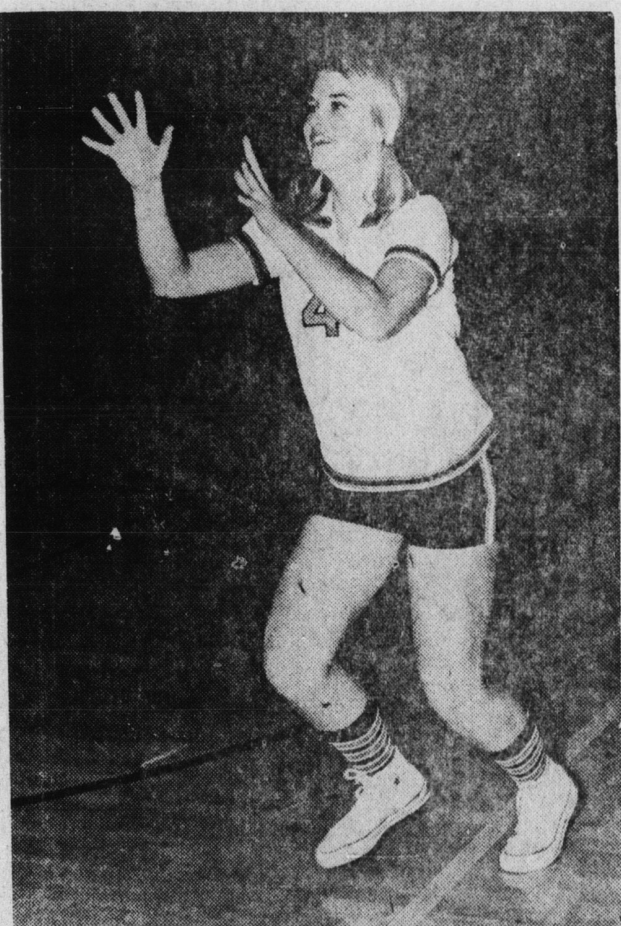
Top prospects include Debbie Timms, Sheila Oliver, Ginger Finger and Andrea Huffstetter from last year's team and newcomers Diane Cornwell, Ann Alexander, Debbie Lee, Pam Lee, Jane Love-Jace, Debbie Francis and others.

Junior forward Geeper Howard also returns off last year's starting team and several others have been pressing the returning starters, including Bobby Ethridge, Chuck Easley, Jewel Watson, Randolph Ross, Wilson Ledford, and others.

Phillip Francis, who started in spots last year and also sparked the club in reserve roles, has also been impressive, along with forward Steve Gladden, who was also a key reserve last year.

The outlook appears dim at this point for the Mountaineers, who lost most of last year's starters. Several sophomores, who led Coach Bill Bates' ninth grade team to the conference championship last year, might break the starting lineup.

Coach Blaine Froneberger's ladies play SWC foe Burns a pair of exhibition tilts before opening



**MOUNTAINETTE FORWARD** — Senior Debbie Timms is one of few veterans on the KMHS girls basketball team. She is expected to be one of the ringleaders of the 89-70 club which begins non-conference play on Dec. 1.

## Apps Hope For Another Good Season

BOONE — Appalachian State University will close out its football season here Saturday afternoon by hosting Guilford's Quakers in an important battle for both clubs. The kickoff is set for 2:30 p.m. in Conrad Stadium.

A winning or losing season hangs in the balance for both the Mountaineers and Quakers as they square off this week. Both teams sport 500 records for the season.

Guilford brings a 4-4 record to Boone, including a three-game winning streak. The Quakers have knocked off Newberry (24-14), Emory & Henry (51-6) and Catawba (21-15) in their last three starts. They've also beaten Gardner-Webb (38-6), while dropping decisions to Davidson (21-8), Elon (17-7), Lenoir Rhyne (29-6) and Presbyterian (17-3).

Appalachian defeated Samford University last week 49-36 to pull its season record to 5-5. A win this week would give Coach Carl Messere his third straight winning season.

Saturday afternoon's game will be the 24th meeting between Appalachian and Guilford. The Mountaineers hold a commanding edge in the long series with 19 victories against only four losses. There have been no ties.

The series started back in 1936 with the Apps rolling up a 52-0 win, recording the highest number of points scored by either team in the series. The Mountaineers won the first six contests, before Guilford broke the ice with a 13-12 win in 1949. Other

## Elon Takes CC Title With 29-0 Win

Seven thousand Homecoming Day fans were disappointed Saturday afternoon as Lenoir Rhyne played its poorest game in several years, losing to Elon, 29-0. The game assured the Christians of sole possession of the Carolinas Conference crown, a title they have held or shared every year since 1965.

The Christians got off to a quick start, and the Bears just couldn't ever seem to get untracked. Elon scored four of the first five times that it got the ball, leading 23-0 with 14:50 still remaining in the first half. After that, the game settled down into a defensive struggle, with the only further scoring coming late in the fourth quarter.

Both teams looked rather sluggish on offense throughout the game. Elon picked up a total of 226 total yards, while the Bears gained 172. The major difference in the game was that the Bears lost four fumbles and four interceptions. Three of those turnovers led directly to scores.

Richard McGeorge, of Elon, although not having his greatest game ever, still hurt the Bears, catching six passes for 115 yards and two touchdowns. The first touchdown, which came on the first play of the second quarter, was the one which really put the Bears out of the ball game. It was a 68-yard bomb that McGeorge caught between two defenders on a third-down-and-38 situation.

Carl Bartles provided the only offensive punch for the Bears, and even he was far below his usual standards. Bartles gained 37 yards in 15 carries.

The Bears did score a touchdown on Craig Koontz's punt return early in the final quarter, but it was called back because of a clipping penalty downfield. The Bears threatened to score several other times, getting inside the Elon 40-yard line five separate times.

Next Saturday, the Bears play their final home game of the season in a game heretofore always played on Thanksgiving Day. Game time will be 8:00.



**BULLDOG STAR** — George Adams, the former KMHS basketball star who averaged 17 points per game last year as a freshman starter at Gardner-Webb, is expected to step into the starring role for the Bulldogs this season.

# Philbert Smith Only KMHS Gridder Named To All-Southwest Conference

## Mounties Win Despite Loss Of Kerr, 49-36

BOONE — Playing without their leading ground gainer, the Appalachian Mountaineers rolled up their biggest offensive performance of the season last weekend in taking a 49-36 decision over Samford University at Birmingham, Ala.

Tailback Dwight Kerr, hampered with an injury, missed the entire game, but his teammates revamped their forces and tallied seven touchdowns against the Bulldogs, marking the most points they've scored all season.

Quarterback Hal Queen threw for three touchdowns and ran for two more to spark the Appalachian win, but it was the running of junior fullback Dave McGlammery of Miller's Creek which kept everyone shaking their heads.

McGlammery was the man of the hour for the Mountaineers. He carried the ball 18 times and gained a net of 218 yards for the ball game. Included in his total yards rushing were runs of 58, 29, 20 and 20 yards. The 58-yard jaunt set up a touchdown in the second quarter to put Appalachian out front for keeps.

McGlammery scored a touchdown himself in the fourth quarter after Samford had pulled within 35-33. That TD put the Apps in a commanding lead and they held on for the victory.

The big game for McGlammery gives him 723 yards rushing in nine games. He's carried 115 times for an average of 6.3 yards per carry—the highest on the team.

Queen, who fumbled at the goal line two weeks ago to cost the Apps a win over Presbyterian, redeemed himself last week. The junior signal-caller from Hickory connected on eight of 16 aerials for 162 yards and three touchdowns—the most in any game this season.



**ALL-CONFERENCE** — Senior tailback Philbert Smith is Kings Mountain's only representative on the All-Southwestern Conference football team for the 1969 season. Smith led the Mountaineers to a 5-4-1 record, their first winning season in five years.

## Adams Take Low Post Position For Bulldogs

BOILING SPRINGS — Gardner-Webb head basketball coach Eddie Holbrook has been pushing his current pack of Bulldogs hard in anticipation of the upcoming season. CW's first against all senior level competition.

Last year's Bulldogs went 31-5, scored over 100 points 22 times and finished tenth nationally in the junior college ranks. This year's squad will be hard pressed to match that record.

"For one thing," says Holbrook, "the competition's going to be a lot rougher." The other thing is obvious — the loss of three starters, including two All-Americans, who transferred to senior colleges and carried a total combined average of 60 points per game with them. Holbrook will have to find adequate replacements for 7-2 Artis Gilmore, 6-5 Ernie Fleming and Steve Kebeck.

There will be no towering giant in the GW lineup this year, but Holbrook does have a kernel full of 6-4 and 6-5 men who are rugged and fast. "We'll just have to rely more on speed, quickness and determination this year," Holbrook said.

George Adams, a 6-5, 205-pound sophomore strongarm who developed very well last year and was most impressive in the national playoffs, will probably step into the low post position that Gilmore had last year.

Three other veterans will probably nail down starting positions. Tony Spagnolo, a 6-4 sophomore forward and Kevin Cantwell, a 6-2 1/2 junior guard both saw plenty of action last year, as did 5-9 guard Alland Land, a superb outside shooter.

Sophomore Richard Thomas, a 6-3 transfer from Robert Morris College, will probably start at one of the wings this year. Holbrook has signed another soph transfer student, 6-4 Jimmy Laughridge, who was the leading scorer at Wofford last year.

Three freshmen prospects will be expected to help the Bulldogs this year. Dennis Carter, a 6-4 strong and quick jumper from Brooklyn and Al Graves, also 6-4 and a good shooter from Cherryville have been coming around well. Husky 6-4 Wayne Weatherman is also expected to see some action.

A pleasant surprise for GW could be Norris Webb, a freshman from Panama City, Panama who played his for country in the Olympic games. Norris is quick and aggressive but still needs to adapt to the American style of play.

"Our biggest man is 6-5," said Holbrook. "We'll have to score quickly this year and really come up with some defensive play."

The Bulldogs open their schedule with a pair of back-to-back road tournaments, "and there won't be many games at home this year, either," Holbrook added ruefully.

**CENTRAL JUNIOR HIGH SCHOOL All Games At 4 P.M.**

DATE	OPPONENT	PLACE
Dec.		
8	Cherryville	Home
11	Highland	Home
15	Cherryville	Away
Jan.		
12	Highland	Away
15	Hunter Huss	Away
19	Belmont	Home
22	Wray	Home
26	Shelby	Home
29	Grier	Away
Feb.		
2	Hunter Huss	Home
5	Belmont	Away
9	Wray	Away
12	Shelby	Home
16	Grier	Away

## FINAL FOOTBALL STANDINGS FOR THE 1969 SEASON NORTH PIEDMONT CONFERENCE

	CONF. GAMES			ALL GAMES		
	W	T	L	W	T	L
North Rowan	5	1	2	5	1	4
Mooresville	5	1	3	6	1	4
West Rowan	2	6	2	8	1	7
C. Davidson	0	7	1	9		
<b>DIVISION II</b>						
East Rowan*	8	0	10	0	0	0
South Iredell	6	1	1	8	1	1
North Stanly	4	4	5	5	5	5
N. Davidson	3	5	4	6	6	6
Davie County	1	1	6	1	1	8
<b>SOUTH PIEDMONT CONFERENCE</b>						
<b>DIVISION I</b>						
	W	L	W	L		
Concord*	7	1	9	1		
Salisbury	6	2	8	2		
Thomasville	6	2	6	4		
South Rowan	3	5	4	6		
Albemarle	0	8	2	8		
<b>DIVISION II</b>						
Lexington	6	2	8	2		
Kannapolis	5	3	6	4		
Asheboro	2	6	3	7		
Statesville	7	7	2	8		
<b>NORTHWESTERN CONFERENCE</b>						
<b>DIVISION I</b>						
Lenoir*	9	0	10	0		
Taylorsville	7	1	8	1		
Valdese	4	5	5	5		
Avery County	0	1	8	0	1	9
Morganton	0	1	8	0	1	10
<b>DIVISION II</b>						
Hudson	5	1	3	6	1	3
Marion	5	4	6	4		
Newton	4	1	4	4	1	5
Watauga	4	1	4	5	1	5
Wilkes Central	4	5	5	5		
<b>SOUTHWESTERN CONFERENCE</b>						
<b>DIVISION I</b>						
Chase	6	3	7	3		
Rutherfordton	4	5	4	6		
Cherryville	3	6	4	6		
Crest	1	8	1	8		
Burns	0	9	0	10		
<b>DIVISION II</b>						
Shelby*	9	0	8	1		
East Rutherford	7	2	9	2		
Lincolnton	5	1	3	6	1	3
Belmont	5	4	5	5		
Kings Mountain	4	1	4	5	1	4

\* DENOTES CONFERENCE CHAMPIONS