

HERALD CLASSIFIED ADS PAY

Return Ballots On Cotton Vote



Everyone Needs Dairy Eggnog at Christmas

SUNRISE DAIRY

Sunrise Dairy Phone 739-5724

Sunrise Dairy 867-6354

December 5 is the last day on which ballots may be postmarked or returned to the Cleveland County ASCS Office...

The referendum is being held December 1-5, by mail, to determine if cotton marketing quotas will be in effect for the 1970 crop.

If cotton marketing quotas are approved, the national average price-support loan rate for Middling 1-inch cotton at average location has been set at 20.25 cents a pound for the 1970 crop.

Tax Forms Out Early

Greensboro, N. C. — About three million 1969 Federal Income Tax forms for America's farmers and fishermen will be sent to them around December 1, a month earlier than usual...

A first for Internal Revenue, the early mailing is an attempt to assist the farmers and fishermen in taking advantage of options open to them in filing returns and paying their tax, IRS officials said.

Estimated tax forms, in a separate package, will reach farmers and fishermen about the same date. In previous years, the estimated tax forms were included in the income tax packages.

Farmers and fishermen have a choice of filing dates: they may elect to file and pay in full an estimated tax declaration by January 15, 1960, and file an income tax return by the April 15 deadline; or they may elect to file only an income tax return by February 16 and pay the tax due with the return.

Like the other 77 million taxpayers expected to file tax returns for 1969, farmers and fishermen will be using the new income tax form 1040.

The form, which replaces both the old form 1040 and the 1040A, is a one-page, basic form to which separate schedules can be added to cover any tax situation.

Distaff DEEDS

(News items this week from Scotland, Pasquotank, Polk and Johnston counties.)

QUILTING STILL AROUND If one thinks quilting is a thing of the past, he's wrong. For 21 Scotland County women recently turned out for an all day quilting party taught by Mrs. Anna Mary Thomas, an active Extension homemaker.

The ladies didn't tackle a quilt, but they did learn the techniques for making patchwork and reverse applique pillows, notes Ann M. Braswell, home economics Extension agent.

They also agreed on two things.

One: Once the pillows were finished, they would be used strictly for decorative purposes and not for every day use. Two: Considering the work involved, a person would have to be "pretty special" to rate a patchwork or reverse applique pillow from them.

SPECIAL PET

Most boys have a dog or cat waiting for them when they get off the school bus. But not Elliott Johnson of Polk County.

The 13-year-old 4-H'er has a pet cow that stands at the gate, waiting for a pat on the nose.



CHRISTMAS HITS ARE OUR KNITS...SHIRTS, SO SMART. CHOOSE FROM CARDIGANS, PULLOVERS.

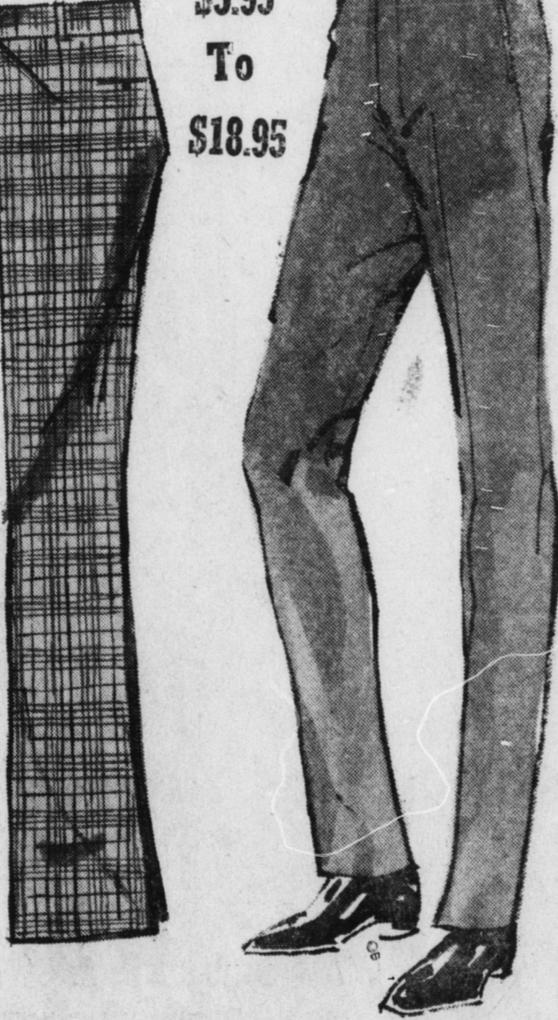
\$6.00 to \$20.00

McGINNIS DEPARTMENT STORE PHONE 739-3116 S. BATTLEGROUND

Great to Receive ..SLACKS

Colorful! That's the holiday story in smart slacks for him, here.

\$5.95 To \$18.95



USE YOUR CHARGE CARDS HERE GIFT WRAPPING McGINNIS DEPARTMENT STORE PHONE 739-3116 S. BATTLEGROUND



Open For Business

SEVEN DAYS A WEEK

413 E. King Street Phone 739-6911 WE CATER TO PARTIES Monday Thru Thursday 11 A.M. to 9 P.M. Friday Thru Sunday 10 A.M. to 9 P.M.

COLONEL SANDERS RECIPE Kentucky Fried Chicken

"it's finger lickin good"

MENU

- 1. Individual Box \$1.26 2 pc. Kentucky Fried Chicken, Whipped Potatoes w/cracklin' gravy, cole slaw, 2 hot biscuits. (Without Slaw \$1.16) 2. Snak-Pak .87 2 pc. Kentucky Fried Chicken, Whipped Potatoes w/cracklin' gravy, 1 hot biscuit. 3. Liver Dinner 1.26 6 tasty, tender chicken livers, whipped potatoes w/cracklin' gravy, cole slaw, 2 hot biscuits. 4. Jumbo Box 1.70 5 pc. Kentucky Fried Chicken, Whipped Potatoes w/cracklin' gravy, cole slaw, 2 hot biscuits. 5. Thrift Box 2.52 (Feeds 3-5 People) 9 pc. Kentucky Fried Chicken only. 6. Bucket-O-Chicken 3.88 (Feeds 3 to 5 People) 15 pc. Kentucky Fried Chicken, 1 pt. Cracklin' gravy, 6 hot biscuits. 7. Barrel-O-Chicken 5.10 (Feeds 7-10 People) 21 pc. Kentucky Fried Chicken only.

Table with 3 columns: Thrift Box Special, Bucket Special, Barrel Special. Lists items and prices.

Table with 2 columns: A-La-Carte, From The Salad Case. Lists items and prices.

Kentucky ROAST Beef

SANDWICHES

- Kentucky Roast Beef Sandwich \$.68 Kentucky Ham Sandwich \$.68

One HOUR "MARTINIZING" THE MOST IN DRY CLEANING

537 EAST KING ST. TELEPHONE 739-5844

MON., TUES. & WED. SPECIALS MEN'S OR LADIES' 2-PIECE SUITS 85c LADIES' 1-PIECE DRESSES 85c

EVERY DAY SPECIAL Laundered Crisp-Bright Folded or On Hangers EACH Shirts 25c

MON., TUES. & WED. "SPECIAL" TROUSERS PLAIN 3 MIX OR MATCH 1 15 SKIRTS OR SWEATERS

OPEN EVERY DAY 7:30 TILL 6 p.m. EXCEPT SUNDAY

Belk advertisement for 'totes' stretch boots. Includes image of boots and a coupon form.

Vertical text on the left edge of the page, including 'SUNSHINE' and 'OLD'.