

# Bethware News

Mr. and Mrs. Fred Green were visitors of Mr. and Mrs. Clyde Tomblin in Spindale Saturday.

Mrs. Bill Willis and Tim of Charlotte spent Monday with Mrs. David Gibbons and family.

Mrs. Ray Carpenter and Miss Debbie Carpenter are home after being patients in Gaston Memorial Hospital for several weeks.

Mrs. Charles M. Fisher Jr. went to Miami, Fla. Monday by plane for an overnight visit with her children, Mr. and Mrs. Jim Fisher and Mr. and Mrs. Glenn Werner and children. Mrs. Fisher returned Tuesday and her sister, Mrs. Edna Matthews, came home with her for a few days visit. Mrs. Matthews returned to her home in Miami Sunday by plane.

Mrs. Johnny McKinney and children visited Rev. and Mrs. Dean Coffey and family of Fallston Sunday afternoon.

The Intermediates of David Baptist Church will entertain the adults 60 and above at a "Sweetheart Banquet". The event will be Feb. 14th at 5 p.m. at the Fellowship building at David Baptist Church.

Oak Grove Baptist church had a W.M.U. Study Course Tuesday night at the church. Mrs. Ray Carpenter was the teacher.

Mr. and Mrs. Emmett Green and children had supper with Mr. and Mrs. Fred Green Sunday night.

ALL SEATS  
**50c**

ALL AGES—ALL SHOWS  
"Bring the Entire Family"



Phone 739-2175  
Shows Daily 3-5-7-9  
Saturday 1-3-5-7-9  
Sunday 1:30-3:30-9:00

WED. THRU SAT.

WAHB, RULER OF THE ROCKIES!



WALT DISNEY  
PRODUCTIONS  
KING OF THE CRIZZANES

SUN. THRU WED.

MGM Presents A Robt. Aldrich Film



...tick...tick...tick...  
Jim Brown George Kennedy  
Fredric March  
Panavision and Stereovision

ADULT ONLY—LATE SHOW  
Friday & Saturday Nite  
10:30 P. M. One Show Only  
"MOTHERS"  
Rated (X) All Seats \$1.00

COMING SOON  
"Medium Cool"  
"Hercules in New York"

## Helen's Beauty Salon

announces the dealership for

### Relaxaway "SLIM-GYM"

LADIES

**LOSE A DRESS SIZE  
In Just Two Weeks**

MEN

**LOSE TWO BELT NOTCHES  
In Just Two Weeks**

"Takes OFF Inches"  
"Exercises WHOLE Body"

"World's Easiest Method of Active Exercise"

The amazing RELAXAWAY—SLIM GYM uses the weight of the body itself for leverage to make active exercise simple and easy. Thus, the body works for you as a living, vibrant force instead of as a dead weight working against you. It is this unique leverage principle that makes the "SLIM GYM" such a simple and easy way to exercise.

Call 739-2321 for Demonstration

A special meeting of W.M.U. Leaders and members, G. A. Leaders and Sunbeam Workers was held at David Baptist church Tuesday night. Mrs. Dwight Ledbetter, our associational W.M.U. Director, was guest speaker.

Miss Shirley Dianne Southards, bride-elect of Boyce Raeford White, Jr., was honored Friday night at a drop-in Bridal Shower held in the Fellowship building of David Baptist church.

Hostesses were members of the Golden Circle and was decorated with a central arrangement of pink snapdragons.

"Pink and white cakes were served with punch, nuts, and mints.

The honoree was given a white "boudier corsage which she wore with her wine party dress.

The 25 guests showered the bride with miscellaneous household gifts.

The Bethware Republican precinct meeting was held at the home of Mr. and Mrs. Charles M. Fisher, Jr. Jan. 31. And the following officers were elected.

Chairman — Gene Hoyle; Vice Chairman — Mrs. Charles M. Fisher, Jr.; Advisory Members — Mrs. Brunson Harmon, Harold Herndon, and Buford Ware.

Judges — Mrs. Harold Herndon, Assistant Judges — Mrs. Bill Babb and William Wright.

Farmers who gross as much as \$10,000 annually are classified in the U. S. Census of Agriculture as commercial farmers.

The Bethware Republican precinct meeting was held at the home of Mr. and Mrs. Charles M. Fisher, Jr. Jan. 31. And the following officers were elected.

Chairman — Gene Hoyle; Vice Chairman — Mrs. Charles M. Fisher, Jr.; Advisory Members — Mrs. Brunson Harmon, Harold Herndon, and Buford Ware.

Judges — Mrs. Harold Herndon, Assistant Judges — Mrs. Bill Babb and William Wright.

KINGS MOUNTAIN  
and  
BESSEMER CITY

DRIVE-IN  
THEATRE

BOX OFFICE OPENS AT 6:15  
SHOW STARTS AT 7:00  
Always \$1.50 A Carload!

THURS., FRI., SAT. 3 HITS!  
—No. 1—  
HOUSE OF USHER in color  
—No. 2—  
DESTROY ALL MONSTERS  
in color  
—No. 3—  
PREMATURE BURIAL in color

On Sat. Movies Run in Reverse

SUN. THRU WED. 2 HITS  
—No. 1—  
THE BABYSITTER  
—No. 2—  
BEDAZZLED in color

On Wed. Movies Run Reverse

## Plan Menus When Buying

RALEIGH — When shopping for food, do you go about it in an organized way? Or are you an impulse buyer who meanders up and down the aisles, buying whatever catches your fancy?

Mrs. Ruby Uzzle, extension consumer marketing economist, North Carolina State University, suggests you start your shopping at home by planning menus. "Be sure to include foods from the four food groups — meats, milk, fruits and vegetables, and breads and cereals," she advises.

After you've planned your menus, check to see what foods you have on hand. Then make out your shopping list, listing the items needed in the order that you'll find them in the self-service store where you shop.

Meats take a large amount of the food budget and can make a real difference in the amount of money you spend for food. The price per pound does not tell the whole story. You have to consider the amount of fat and bone in each meat cut. "Don't overlook poultry and fish," Mrs. Uzzle points out. "Also, cheese, eggs and dry beans are good alternates for meat."

In the canned and packaged foods department, check the number of ounces and the price. You can make large savings if you shop carefully. Usually the smaller cans are the most expensive. But if one or two servings will meet your family's needs, then the small package may be most economical for you.

Choose fresh fruits and vegetables for quality — keeping in mind that those in season will probably have lower prices than items out of season.

"With wise planning and careful shopping, you can enjoy good meals and know you're spending your food money wisely," Mrs. Uzzle concludes.

Washington Monument is 555 ft. 5 1/8 in. high.

## Here Are Tips To Plant Roses

By ARTHUR BILTCLIFFE

How to plant a rose bush or any other plant? There's only one thing you can do with anything you plant and that is to put it in the ground right the "first" time.

Gardening is only for those willing to take proper time and effort to do things to the best of their ability.

First, figure a hole wide enough to utilize the full length of the roots, if extra long roots, don't cut them off—just slit a trench in order to accompany the root. As for depth, it is a hundred times more important to put the plant in exactly the same depth as it came out. A "store-bought" rose has a graft on it. That's what you pay for. The graft must be exactly on top of the ground at all times. The graft must be washed or hosed off and kept clean of soil, mulch, and grass if you expect it to break out in branches, and turn into a bush. When first planted, mound it like a pyramid leaving the top most in the sun. About April 1st, each week remove a little of the mound till back to normal ground showing the graft (clean) in the sun. Home made roses, etc., or purchased plants show a water line on the trunk base. The white space proves that the white is to be put back in the ground just below ground level. Gardeners should learn to be "copy cats." Don't plant to suit yourself, always plant to suit the individual plant. I usually sift the soil that is directly on the roots, stand on the soil, then pour all the rough material on top till a mound is formed. If the soil is damp do NOT water. Roses have water. More next week about pruning roses.

Mr. and Mrs. M. T. Long and Mr. and Mrs. M. T. Long, Jr. from Wilmington spent the week end with Miss Fanny Carpenter.

SEE OR CALL DOUG YARBRO OR MICKEY BELL FOR A D. D. DEAL IN THE SERVICE DEPARTMENT.

Special Engine Tune Up For:

Regular V8 Engine—List ..... 25.80  
Our Special Price ..... 19.32

YOUR SAVING ..... 6.48

Regular 6 Cylinder Engine ..... 23.80  
Our Special Price ..... 17.32

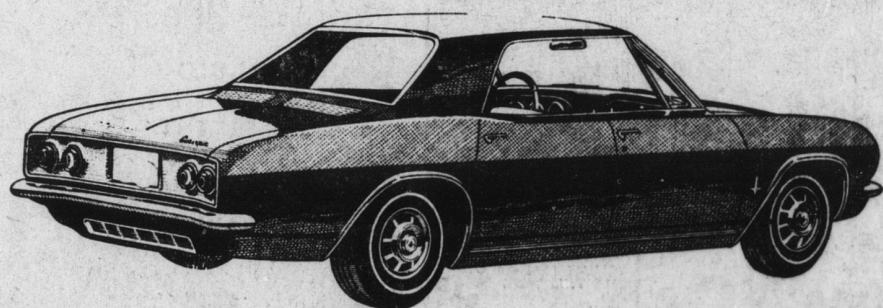
YOUR SAVING ..... 6.48



CHARLES DIXON

This Includes Spark Plugs, Points, Condenser and Labor, By One of Our Factory Trained Technicians, James Rikard, Harold Allen, Winnie Eiters, Charles "Whitey" Bowen and We Welcome Wayne Self Back To Our Service Department. Wayne Wants To Invite All of His Customers To Come By Dixon Chevrolet, Inc. For Any of Their Automotive Needs.

# Now! It Costs Less To Go First Class



More Car For Less Money

Nova Fully Equipped

Only

**\$2295**

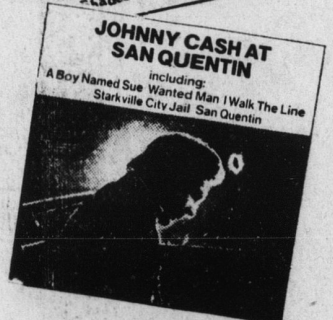
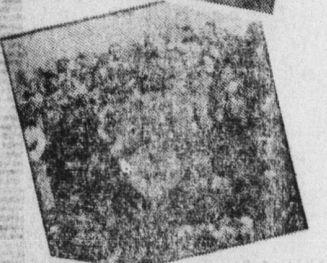
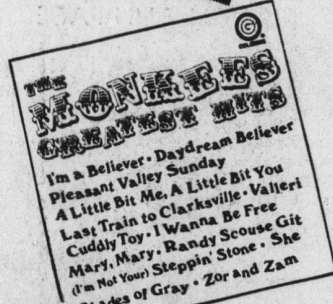
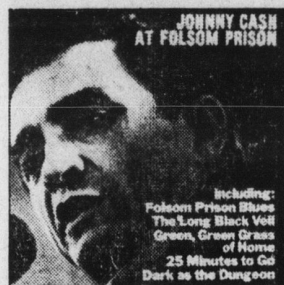
## Over 40 New Trucks In Stock

Longest Trade-In Value for Your Present CAR or TRUCK. Biggest Discounts Ever. We Are Over-Stocked in New Trucks —Which is to Your Money-Saving Advantage.

# Dixon Chevrolet, Inc.

Corner Railroad At Mountain

Phone 739-5471



3

Days Only!  
**20% OFF**

Yes Sir A 20% Discount On ALL RECORDS

INCLUDES all LP's and 45's

NO GIMMICKS

Choose from Roses Complete Inventory None held back...

All Less 20%

3 DAYS ONLY

Thur., Fri., Sat. Only  
Feb. 12th, 13th, 14th.  
Hurry For Your Savings

