

LEGAL NOTICES

**NORTH CAROLINA
GASTON COUNTY
IN THE GENERAL COURT
OF JUSTICE
District Court Division
NOTICE OF SERVICE OF
PROCESS BY PUBLICATION
PRISCILLA SHULL NANCE,
Plaintiff
vs.
HOWARD JUNIOR NANCE,
Defendant**

TAKE NOTICE that a pleading seeking relief against you has been filed in the above-entitled

action. The nature of the relief as follows: Absolute divorce on the grounds of one year separation.

You are required to make defense to such pleading not later than August 2, 1972 and upon your failure to do so the party seeking service against you will apply to the court for the relief sought.

This 21st day of June, 1972.
Robert L. Bradley
Attorney for Plaintiff
122 Cherokee Street
Kings Mountain, North Carolina
704-739-4526

WATER WEIGHT PROBLEM?

USE **E-LIM**

Excess water in the body can be uncomfortable. E-LIM will help you lose excess water weight. We at...
Dry Store
recommend it.
Only \$1.50
K. M. Drug Co.

FOR SALE BY OWNER - 1969 Chevrolet 1/2 Ton Truck. Solid blue. In good shape. Less than 53,000 miles. \$1350. PHONE 739-3543. 6:15pm

FOR SALE - One male (pick of the litter) German Shepherd puppy. Run-Tin-Tin blood line. Call 739-2916 after 6:00. 6:22-7:6

FOR SALE - 6 Acres of land with road frontage. 1001 Hwy. Bethware Community. Phone 739-5256 after 6. 5:4pm

IT'S HERE!!

YES, THE **NORRIS** IS HERE.

LIVE MODERN... LIVE TODAY IN A **Mobile Home**

In the New "Sonny James Decor"
12x66, 2 Bedroom, 1 1/2 Bath - Fully Carpeted
AND With An 18' Living Room.

SEE IT TODAY AT

E & M Mobile Homes, Inc.

HWY. 74 E. SHELBY, N. C.
PHONE 482-2351

SINUS SUFFERERS

Here's good news for you! Sufferers of "hard core" SINUS CLEAR. Sufferers who have tried many other remedies and have not found relief. Now you can try SINUS CLEAR. It's the only medicine that works. You can buy SINUS CLEAR AT...
Satisfaction guaranteed by maker. Try it today!

Introductory Offer Worth \$150

Cut out this ad - take to store. Purchase one pack of SINUS CLEAR 12's and receive one more. SINUS CLEAR 12-Pack Free.

Kings Mountain Drug Co.

WE NEED YOU

Due to the continuing growth of our mining division we need the following personnel:

- Shovel Operators
- Drillers
- Service Men
- Mechanics
- Welders
- Flotation Operator or Trainee

Contact Lithium Corporation of America

New wage rates in effect Feb. 1, 1972. We offer good starting pay, free hospitalization, retirement and many other liberal fringe benefits.
Highway 161 Bessemer City, N. C. Phone 629-2282
equal opportunity employer

EMPLOYMENT OPPORTUNITIES

Immediate Openings in Production

No Experience Necessary

We provide on-the-job training leading to responsible positions in flotation and grinding plant operations.

CHECK THESE ADVANTAGES:

- EXCELLENT STARTING RATES
- PAID VACATIONS
- PAID HOLIDAYS
- GROUP INSURANCE
- PENSION PLAN
- OPPORTUNITY FOR ADVANCEMENT

Now Interviewing 9:00 A.M. - 4:00 P.M.

United States Gypsum Company

Kings Mountain Plant
An equal opportunity employer

Located approximately 4 miles south of Kings Mountain on 216 (Grover Road)
Look for USG sign with arrow 4:27-5:4

ON PROPOSED CHANGE IN ZONING

The public will take notice that a public hearing will be held in Council Chambers in the City Hall in Kings Mountain, North Carolina at 7:30 p.m. on the 10th day of July, 1972 to consider changing the below described property to general business.

TRACT I
BEGINNING at a point where the west edge of York Road intersects with the South edge of East Gold Street and runs thence along Gold Street 400 ft. more or less in a Westerly direction to a point in a line on Gold Street which is now zoned heavy industrial thence in a Southerly direction along the heavy industrial line 1200 ft. more or less to a point in Bennett Street which is now zoned R-8 thence further along said heavy industrial line in a Westerly direction 300 ft. more or less to a point where the present R-8 line corners with the heavy industrial line thence in a Southerly direction along said heavy industrial and residential line 1001 ft. more or less to a point which is now zoned general business thence in a Southerly direction 201 ft. more or less to a point in a line which is now zoned general business thence along the R-8 line and general business lines in an Easterly direction to a point 500 ft. more or less to a point in the edge of York Road, thence along York Road 2300 ft. more or less in a Northerly direction to the BEGINNING. All the above described property is presently zoned R-8 in accordance with the City Zoning Maps as found at the Kings Mountain City Hall.

TRACT II
BEGINNING at a point where the Eastern margin of York Road intersects with the Southern margin of East Gold Street and runs thence along the Eastern margin of East Gold Street in an Easterly direction 235 ft. more or less to a point in a line which is now zoned R-8 thence along said R-8 line in a Southerly direction parallel to York Road 1000 ft. more or less to a point in the line which now zoned light industrial in the Northern edge of Floyd Street thence along Floyd Street in a Westerly direction 235 ft. more or less to the Eastern margin of York Road thence along the Eastern margin of York Road in a Northerly direction 1000 ft. more or less to the BEGINNING. All the above described property is presently zoned N-B.

6:22-7:6

6:18-25

6:22-29

6:22-29

6:22-29

6:18-25

6:18-25

6:18-25

6:18-25

6:18-25

6:18-25

6:18-25

6:18-25

6:18-25

6:18-25

RESOLUTION AND HEARING THEREON

The public will take notice that a preliminary assessment resolution pertaining to the proposed street improvement project on Williams Street between Edgemont Avenue and the dead end of Williams Street, as requested in a petition submitted by the owners of abutting properties on the 15th day of May, 1972, was adopted by the Board of Commissioners of the City of Kings Mountain, North Carolina on the 12th day of June, 1972.

The nature of the improvement is paving.

The Board of Commissioners will hold a public hearing at 7:30 p.m. in Council Chambers in the City of Kings Mountain, North Carolina on the 10th day of July, for the purpose of hearing all interested persons who appear with respect to any matter covered by the preliminary resolution.

John Henry Moss, Mayor
6:22

6:22-29

6:18-25

6:8-22

6:22-29pd

6:22-29

6:18-25

6:18-25

6:18-25

6:18-25

6:18-25

6:18-25

6:18-25

6:18-25

6:18-25

6:18-25

Birth Rate Lowest Ever

North Carolina's birth rate was the lowest ever recorded in the history of the state in 1971 - 18.6 residents births per 1000 population, compared to 19.3 in 1970. It was reported recently by the Annual Vital Statistics Report of the N. C. State Board of Health. The white birth rate was 17.0 and 23.9 for nonwhite.

The report noted that a rising trend has been observed in the illegitimate birth rate during recent years - 112.8 in 1971, compared to 9.3 in 1960. The 1971 illegitimate birth rate is 10 times the white rate.

The North Carolina infant mortality rate in 1971 was 22.0 deaths per 1000 live births. This was the lowest infant mortality rate ever recorded in the state, equal to 1960. The white infant mortality rate dropped from 22.2 in 1960 to 17.7 in 1971. The nonwhite rate declined from 52.0 in 1960 to 32.0 in 1971. The United States has experienced similar reductions in infant mortality in recent years.

The divorce rate for the state was 3.0 per 1000 population in 1971 - up from 2.7 in 1970. The North Carolina divorce rate accelerated after 1964 when one-year separations replaced two-year separations as grounds for

Rural Housing Loans Available

Cleveland County are now eligible for rural housing loans from the Farmers Home Administration. FHA County Supervisor John E. Davis announced today.

"In families where both husband and wife are employed," Davis explained, "the new policy permits half of the wife's gross income to be excluded in determining whether the total family income is within the maximum limit for loan eligibility."

For example, the husband is the principal source of income with \$6,000. His wife earns \$4,000. His entire income, plus half of his wife's, or \$2,000, total \$8,000. This is within North Carolina's moderate income level of \$8,000 so the family may be eligible for a Farmers Home Administration loan.

Newly-eligible families must demonstrate that they otherwise merit FHA financing, and that credit is not available from regular commercial sources.

The new policy will assist families in which the wife's income is needed to improve the standard of living. Note that if the wife is the principal breadwinner, the rule does not apply. This change will in no way effect our expanding service to low-income families.

Loans may be made to families that will buy or build homes in open country or towns of up to 10,000 population, and who are not able to secure credit from regular commercial sources. Complete information is available from the Farmers Home Administration office in the Cleveland County Office Building.

TRACTOR TRAILER TRAINEES APPROVED FOR VETERANS TRAINING

Yes, a giant step will have been taken to insure your future with high pay and many fringe benefits in America's leading industry, train with TRI-STATE DRIVERS TRAINING SCHOOL. For application and interview call 615-947-2511 or write 6408 Clinton Highway, Knoxville, Tennessee. Attn. School Safety Division. Approved for veterans training, placement assistance available to all graduates. Licensed by the Tennessee Department of Education. 6:18-25

6:18-25

6:8-22

6:22-29pd

6:22-29

6:18-25

6:18-25

6:18-25

6:18-25

6:18-25

6:18-25

6:18-25

6:18-25

6:18-25

6:18-25

WHAT? 25 PERCENT?



With rising building costs it will cost 25% more than it did 3 years ago to replace your building. Have your property insurance checked at C. E. Warlick Ins. Agency, to be certain it covers to Full replacement value.

C. E. WARLICK INSURANCE AGENCY

110 West Mountain Street
Kings Mountain, N. C.
PHONE 739-3611

white illegitimate birth rate is

10 times the white rate.

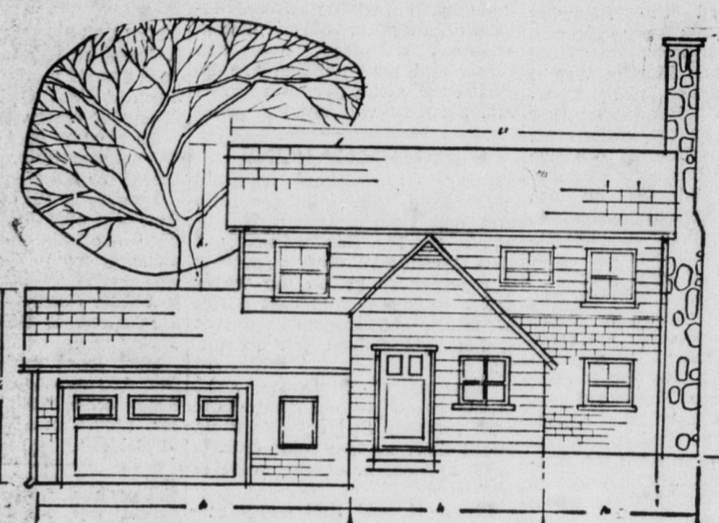
The North Carolina infant mortality rate in 1971 was 22.0 deaths per 1000 live births. This was the lowest infant mortality rate ever recorded in the state, equal to 1960. The white infant mortality rate dropped from 22.2 in 1960 to 17.7 in 1971. The nonwhite rate declined from 52.0 in 1960 to 32.0 in 1971. The United States has experienced similar reductions in infant mortality in recent years.

The divorce rate for the state was 3.0 per 1000 population in 1971 - up from 2.7 in 1970. The North Carolina divorce rate accelerated after 1964 when one-year separations replaced two-year separations as grounds for

★ **FOR YOUR SHARE IN AMERICA** ★

U.S. SAVINGS BONDS

A House Is More Than A Home-



It's A Blue-Chip Investment.



Kings Mountain Savings & Loan Association
P. O. BOX 746 KINGS MOUNTAIN, NORTH CAROLINA 28087

Save On Decorator Styled STORAGE CABINETS

Your Choice **\$79.95**

42" Molded Door China
42" x 20" x 72"
Contemporary styled china with rich hand rubbed cherry finish on doors and drawer fronts to simulated actual Cherry fruitwood graining. See through swing-out doors, heat & stain resistant extended plastic work area. Utility drawer with extra storage below. Magnetic door catches.

\$119.95

30" Kitchen China
Sliding glass doors, electric outlet, open work shelf, full-width utility drawer, magnetic door catches.

42" x 22" x 66"

Molded Door Contemporary Wardrobe
36" x 21" x 66"
Contemporary styled wardrobe, hand rubbed Pecan finish to simulate actual wood graining. Steel body in rich warm brown tone. Magnetic door catches.

\$89.95

42" Combination Wardrobe
Full width hat shelf. Holds 36 garments plus room for shoes & boxes. 44" mirror, strong lock. Deep bottom storage drawer for out-of-season clothing or bulky blankets. Magnetic door catches. Sandalwood.

\$89.95

42" x 21" x 72"

Feather touch closing as doors slide on nylon glides. Extra deep. Full width hat shelf. Ample room below for storage.

Cooper's Inc.