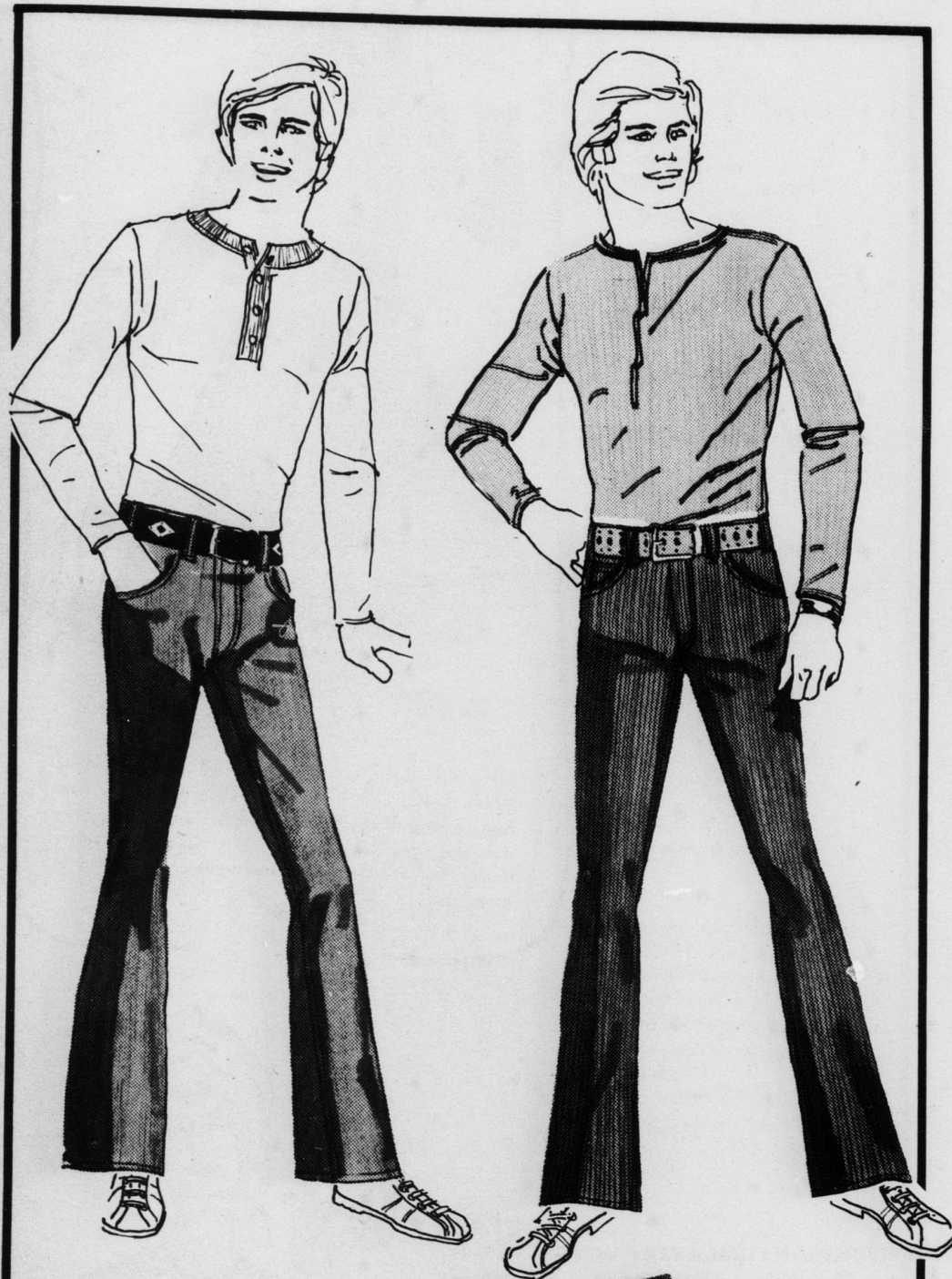


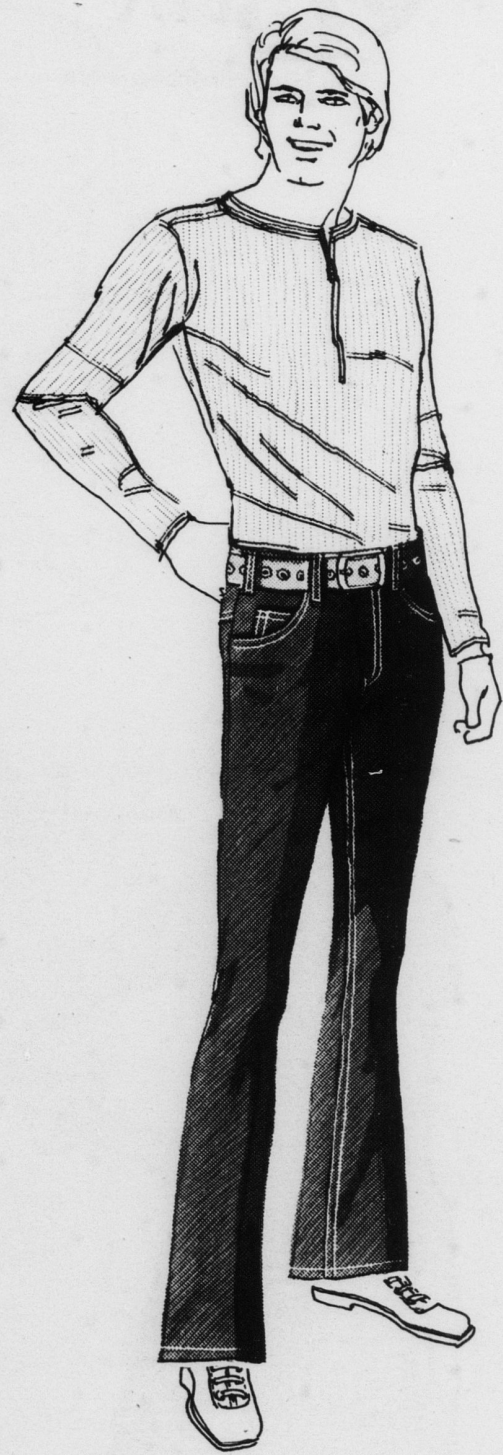
**Belk**  
Your Happy Shopping Store



**SALE**

**TWISTER FLARE Corduroys**  
Heavy 100% Cotton  
**BRUSHED**  
Corduroy  
Wide Collection of Colors  
reg. 8.00 **5.88**

Narrow Wale  
**CORDUROY**  
All The Best Colors  
reg. 6.00 **4.00**



**WRANGLER  
FLARE  
JEANS**

"350"  
DENIM  
14 Oz. Plus  
Superslim Fitting  
**6.39**

**Belk**  
Your Happy Shopping Store



'RED CAMEL' CAREER CLOTHES made with **PORTREL**  
**3.44** SHIRT usually 3.99  
**4.44** PANTS usually 4.99

Never needs ironing, thanks to Celanese Fortrel. A blend of 50% Fortrel\* polyester, 50% cotton in sturdy twill weave stitched and bartacked with tough polyester for longer wear. Dress-clothes good looks plus on-the-job features like button flap pockets with pencil slot, tunnel belt loops, heavy duty pants pockets. Your choice of tan, navy, olivewood, spruce green or grey. \*Reg. trademark Fiber Industries, Inc.

'RED CAMEL' CUSHIONED INSOLE SHOES  
with sturdy oil-acid-grease resistant Neoprene® soles  
**12.88** OXFORDS usually \$15  
**13.88** 6" SHOE usually \$16

SALE ENDS SATURDAY JAN. 27th.

from Savannah had a...  
—In 1972...  
At the re...  
shareholder...  
the 1972...  
ed directors...  
ing, directo...  
Highligh...  
sented by...  
cutive vice...  
assess its...  
or \$3,762,222...  
Savings I...  
or \$3,089,000...  
Mortgage...  
percent, or...  
Sh...  
Dividend...  
total of a...  
The ass...  
to its ass...  
includin...  
account for...  
518 in the...  
serve acc...  
funds ret...  
Other as...  
ed \$282,254...  
state and

**Another  
At Ho**

A Kings...  
ed and...  
by reg...  
dily in...  
Superior...  
Thomas's...  
ers street...  
July 18, 19...  
White Smi...  
Judge W...  
Meeks a...  
tem and...  
bation...  
office of...  
Court \$10...  
years. At...  
the mone...  
Smith I...  
Meeks w...  
possess...  
I

**Meeks  
Is Sus**

Mo...  
chor in...  
Haydn, S...  
in two of...  
"Stranger...  
"Hosanna...  
The first...  
by the Ma...  
the second...  
10 by the...  
cents will...  
will be h...  
him.

Dr. Dan...  
ral activ...  
lege Conserv...  
will serve...  
the silver...  
chiller, one...  
music dep...  
porter at...  
two publi...  
on in con...  
The first...  
by the Ma...  
the second...  
10 by the...  
cents will...  
will be h...  
him.

**KMHSS  
To Chi**

The Kin...  
school cho...  
school str...  
half of No...  
ern Tenn...  
the 25th...  
9 and 10...  
Dr. Dan...  
ral activ...  
lege Conserv...  
will serve...  
the silver...  
chiller, one...  
music dep...  
porter at...  
two publi...  
on in con...  
The first...  
by the Ma...  
the second...  
10 by the...  
cents will...  
will be h...  
him.

**K Mill  
Is Buil  
Office**

K Mills, I...  
for addit...  
plant on...  
The firm...  
building...  
addition...  
00.

**City**  
VOL. 84  
Greater...  
City Lin...  
The Gre...  
Special...  
Number...  
Number...  
Monday...  
9