

Photos By Gary Stewart

GIVES KM LEAD — Sophomore Vernon Bell breaks through the R-S Central defense for two points that gave KMHS a 35-34 lead over the Hilltoppers late in the first half of Wednesday's Southwestern Conference basketball opener. The Hilltoppers came back to tie the score at 35-all at the half, then pulled away in the second half to win 76-68.

Junior High Ladies Play Home Finale

Kings Mountain Junior High's girls jayvee basketballers dropped their first game of the year last week to Burns, 28-26, and fell into a tie for the Foothills Conference lead.

Coach Becky Summitt's lassies bounced back on Wednesday to take a 28-27 overtime victory over Shelby and stay in a tie with Burns. KM plays host to Crest today.

Coach Summitt was displeased with her team's showing in both of last week's contests and said the Lady Patriots will have to play much better if they expect to repeat as conference champions.

"We had several chances to win at Burns, especially from the foul line," noted Summitt. "But we just didn't take advantage of our opportunities."

"We just weren't playing up to par of offense or defense," she continued. "We made too many costly errors and were simply out-hustled."

Beverly Wright of Burns was the game's top scorer with 17 points. Diane Wil-

lams led KM with 11 and shared rebounding honors with Sheryl Goode with six.

Goode scored 11 points and Karen Roberts eight Wednesday as the Lady Pats whipped a fired-up Shelby team on the Lady Devils' home court. Goode and Williams led the rebounding with seven each.

"Our shooting percentage was very poor and we didn't move the ball well on offense," noted Summitt. "We also made a number of turnovers that almost cost us the game. However, Sheryl Goode and Diane Williams hit several free throws in the overtime period to pull the game out for us."

The KM varsity dropped both of their games, losing 58-55 to Burns in overtime and 50-42 to Shelby.

Andrena Goode's jump shot at the buzzer tied the Burns game at 52-all and sent the two clubs into overtime. Susan Howze and Donna Myers hit overtime free throws to give KM the lead, but Burns came back to win on a bucket at the buzzer by Sylvia Webber.

Early foul trouble hurt the KM girls, who fell behind 18-12 after the first quarter. Kim Gladden was saddled with three quick fouls and several other Lady Patriots had early fouls.

Goode scored 16 points, Gladden 14, Debbie Appling 10, Howze eight and Mary Moore six for KM. Appling also pulled down 16 rebounds and Howze added 11.

KM lost the game at the foul line, hitting only five of 21 attempts while Burns hit 14 of 35. Gladden, Appling and Moore all fouled out.

The Lady Pats jumped to an early lead at Shelby Wednesday but the Lady Blue Devils came back to lead 23-21 at intermission. Veteran William Thompson added 20 points and newcomer Everett Burris scored 13.

maintained that cushion during the fourth quarter.

Gladden led the KM scoring with 21 points and Howze added six. Appling led the rebounding with 11 and added five points.

"I'm not really pleased with the way we played," noted Coach Candy Alberghine. "We've got to be more patient on offense and work for the good shot. Too many times we came down court and took bad shots before we had time to set our offense."

"We played well defensively," she noted, "but Shelby had several girls who could shoot well and we just weren't able to contain them."

Today's doubleheader against Crest, beginning at 8:30, is the final home contests for the KM teams. They travel to Lincolnton on Thursday and end their season a week from today at East Lincoln.

Junior High Wrestlers Open

Kings Mountain Junior High's wrestlers open their 1976-77 season Wednesday at West McDowell.

Coach Steve Moffitt's grapplers, who were 7-1 last year against North Carolina opponents, have high hopes of an unbeaten season, and with some of their toughest matches at home, could realize that goal.

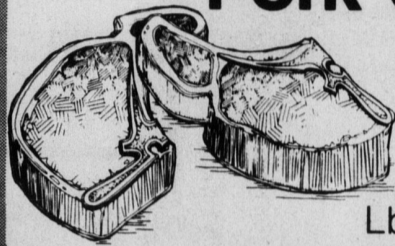
The Patriots have four of their seven matches at home, including Asheville (the only N. C. school that whipped KM last year), and Sullivan of Rock Hill, the team Moffitt feels will give the Pats their stiffest competition.

Several of the Patriots' key performers return this year, including Maurice Jamerson, Avery Smith, Johnny Ross, Kenny Womack, Tim Seay, Ron Rowell, Robert Sheffield, Lenny Thompson and Chuck Price. Several newcomers have also been impressive.

Harris Teeter

More Value
M
Foods

Whole Or Rib Half Pork Loin Cut Into
Pork Chops
77¢
Lb.



(Sirloin Or Regular Half Loin Cut Into Pork Chops Lb. \$1.09)

Save 40¢ per lb.

U.S. Choice Quality Trimmed Beef
Chuck Steak
(Or Roast)
77¢
Lb.

(Arm Shoulder Roast Lb. 99¢)

Save 22¢ per lb.

U.S. Choice Beef
Beef Loin
(Cut & Counter Wrapped FREE)

\$1.09
Lb.

You Get Sirloin, T-Bone, Strip Or Porterhouse Steaks, Ground Beef, Bones & Fat. (Approx. 45 Lbs.)

Save 30¢ per lb.

U.S. Choice Quality Trimmed Beef
Rib Eye Steaks
(Approx. 8 Oz. Ea.)

10 For **\$12.99**

Save \$1.46

Holly Farms

Freshly Cut Chicken

Thighs Lb. **69¢**

Freshly Cut

Leg Quarters . Lb. **59¢**

6 Btl. 32 Oz. Ctn. Returnable **\$1.59**

MT. DEW OR PEPSI COLA

Plus Dep.

Arts N Flowers
Scott Towels
49¢
Jumbo Roll

Save 14¢

Deal Pack
Gain Detergent
99¢
49 Oz.

(Limit 1 W/\$7.50 Order)

Save 28¢

Datril Tablets
\$1.19
100 Ct.

Save 53¢



Swift's
Hostess Ham

\$6.99
4 Lb. Can

(Sliced \$7.39)

Save \$1.00

Heinz Catsup
69¢
32 Oz.

Save 30¢

Jewel Shortening
79¢
42 Oz.

(Limit 1 W/\$7.50 Order)

Save 36¢

100% Pure From Florida
Vernedale Orange Juice
3 \$1.00
12 Oz.

Save 29¢

Florida White
Seedless Grapefruit
8 99¢
Lb. Bag

Save 30¢

Fruit N Honey Peach Or Pear Halves Or

Fruit Cocktail 3 **89¢**
No. 303 Cans

Sunshine Sweet
Florida Oranges

8 89¢
Lb. Bag

Save 30¢

Frozen Regular
Banquet Dinners
(Excludes Ham & Fish)

99¢
2 11 Oz.

Save 11¢

We Gladly Redeem Federal Food Stamps

Prices Effective Through Wed. Dec. 8
Quantity Rights Reserved

Kings Mountain