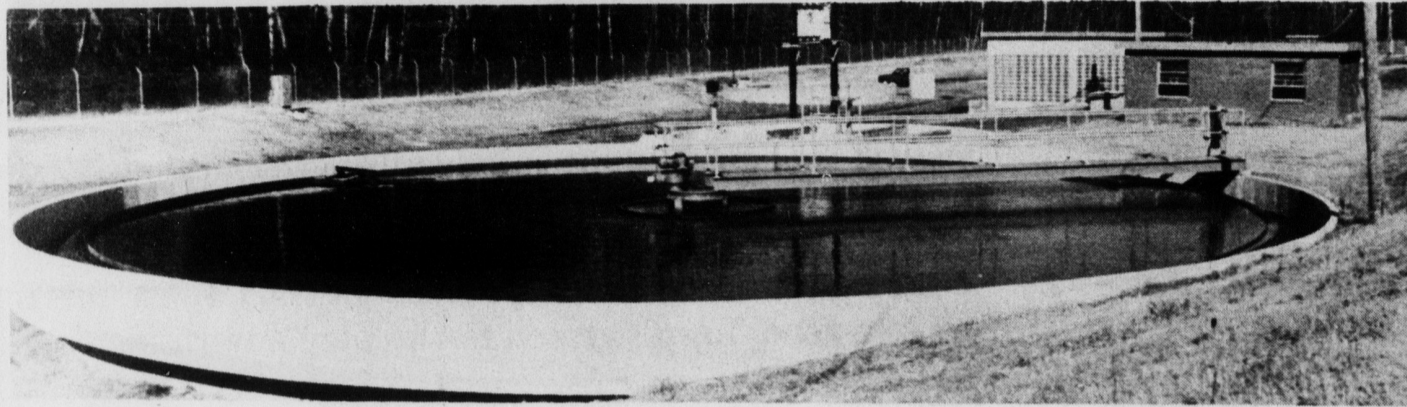


Expansion Work

Expansion work at the Kings Mountain Pilot Creek Waste Treatment Facility includes a new aeration filtering tank beyond the one in the foreground. Raw

sewage is returned to these tanks for treatment. The Pilot Creek Plant handles both industrial and domestic waste.



Another New Addition

Another new addition to the Pilot Creek facilities is this clarification tank. Following preliminary treatment in the aeration tanks, the waste water is pumped

here for step number two in the recycling process. From here the water is pumped into holding tanks.

Photos By Tom McIntyre

KM Squad Gives '76 Report

Kings Mountain Rescue Squad members traveled a total of 22,876 miles during 1976 for a total of 1,096 hours on trips, 2010 trips made, 22,876 miles traveled, 8,074 hours in meetings and on stand-by and 488 hours in EMT training.

The break-down includes: Kings Mountain Hospital, 673 trips; Cleveland Memorial Hospital, 93 trips; Charlotte Memorial Hospital, 57 trips; Gaston Memorial Hospital, 88 trips; Kings Mountain Convalescent Center, 64 trips; Kings Mountain area doctors, 51 trips; Shelby area doctors, 14 trips; other hospitals, 26 trips; trips; fires, 36 trips; blood relays, 36 trips; worked traffic, 39 trips; dead on arrival trips, 19; house calls, 663 trips; accidents, 142 trips; miscellaneous trips, 44; simulated disasters, two trips; ball games, nine trips; races, two trips; lake patrol, 10 trips and were called to the scene of one drowning accident.

Make Your Own Candles

By JAN CHRISTENSEN
N. C. State University

When you make your own candles, you save money. And you have candles that are uniquely yours—that are different from everyone else's.

Joyce Hildreth, extension home economics agent, Rockingham County, observes that you can make a very pretty candle by layering different colors of wax.

Simply pour one color into the candle mold, let it harden, and add additional colors until you have the size candle you want, she suggests.

In addition to making candles for yourself, you may wish to make some as gifts, the agent concluded.

SPECIAL QUILT

A handmade quilt that featured the state flower from each of the 50 states turned out to be a real moneymaker for Warren County's Extension Homemakers.

The women, who designed and made the quilt, decided to sell tickets on it and donate all the proceeds to the Warren County 4-H development fund.

The final tally was \$1,451, says Emily Ballinger, home economics extension agent.

RECEIVE GIFTS

Patients at McCain Sanatorium in Moore County were on the receiving end of gifts donated by members of the county's Extension Homemakers Clubs.

Homemakers made 192 holiday favors and donated 300 hospital gowns and 75 pairs of scarves, says Jean Hubbard, home economics extension agent.

The women also donated used clothing and magazines to the center.

"I'm not a health food nut by any means, but I want my baby's foods to be as pure and as natural as possible."

"Sugar is an acquired taste. I'd rather my children acquire it later, if at all."

"What's the purpose of all these additives?"

Such are the typical comments of concerned mothers who have engaged in an open, vocal warfare with most manufacturers of baby foods. To date, only one company has responded with a complete line of no-sugar-added baby juices in glass bottles.

Beech-Nut, a forerunner in baby food since 1932, has introduced 100% natural fruit



juices in 8 flavors, each fortified with Vitamin C. The juices are clearly labeled,

"Naturally sweet — No sugar added." Prepared from naturally sweet ripened fruits, these juices are protectively packaged in sterilized, vacuum-packed glass bottles to preserve flavor and freshness. As an added convenience, a standard nipple can be fitted to the bottle, making the juice ready to serve as is, without the mess and bother of transferring from a tin container to a nursing bottle.

The Beech-Nut juices are available in apple, orange, orange/banana, orange/pine-apple, apple/cherry, apple/grape, mixed fruit and prune/orange flavors. The four most popular are packaged in handy six-packs for shopping ease.

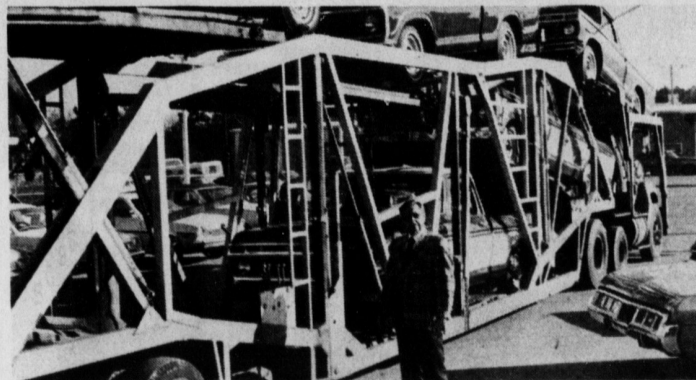
Open Vocal Warfare

Wade Tyner has to play catch-up football now that he has plenty of '77 Fords.

Wade Tyner didn't have many '77 Fords for his season opener on October 1st. And because of the strike against Ford, he didn't get near enough '77 Fords since then.

Which means that Wade's new car sales have been pretty slow in recent months.

But now the '77 Fords are rolling in and Wade wants to make up for all the new car sales he didn't get during the strike. He'll hit those



Wade welcoming convoy of '77 Fords.

'77 Fords where it hurts, right on the old window sticker. That's right. Wade will give you a big discount on any '77 Ford, even a Thunderbird or LTD. He'll consider any kind of unreasonable offer on a trade.

So if you've been thinking about getting a spanking brand new '77 automobile, come play catch-up football with Wade Ford. Chances are you'll drive off the field a big winner.

WADE FORD

Highway 74, Kings Mountain
Hit Wade While He's Down

FAMILY DOLLAR SENSATIONAL BARGAINS FOR JANUARY

CLOROX LIQUID BLEACH
GALLON SIZE
69¢ GAL.
LIMIT 2

Schick Plus Platinum PLATINUM BLADES
OUR REG. 50¢ PKG. **3 \$1** PKGS. LIMIT 3

ROSE MILK LOTION
8 OUNCE
REG. \$1.19
SAVE 31¢ **88¢**
LIMIT 2

SAVE A BUNDLE ON PAMPERS!
BOX OF 30 DAYTIME OR 24 EXTRA ABSORBENT DISPOSABLE DIAPERS
YOUR CHOICE
\$1.99 BOX
LIMIT 2 EACH

OUR BAG IS BARGAINS!
60-75 OR 100 WATT WESTINGHOUSE
LIGHT BULBS
PACKAGE OF
2 FOR 44¢
LIMIT 4 PKGS.

BOXED STATIONERY
ASSORTED DESIGNS BY MONTAG
SAVE BIG! **2 \$1** FOR

FIRST QUALITY COMBED COTTON
BOYS' T-SHIRTS
PKG. OF 2 FOR **99¢**

SPECIAL GROUP!
MEN'S WARM COTTON QUILTED JACKET
\$2 EACH WHILE THEY LAST!

Gastonia Hwy. 74 West-Mon-Sat. 10-8
Gastonia: E. Franklin Ave. Mon.-Sat. 9-8
Boss. City Mon.-Sat. 9-8 Fri. 9-8
All Stores Open Sun. 1-6
PRICES GOOD THROUGH SATURDAY WHILE QUANTITIES LAST.