

# THE TOTAL MEAT PEOPLE

ASKUS



THE TOTAL MEAT PEOPLE  
AT FOOD TOWN,  
HOME OF LFPINC

Q. What kind of meat is sold by THE TOTAL MEAT PEOPLE?

A. Food Town sells only selected, top quality USDA choice heavy western grain fed beef.

Q. Some companies leave out the government grade of beef when they advertise their product. Why is this so?

A. A company is required by law to PROVE that the purchase for resale the grade of beef they advertise or promote. THE TOTAL MEAT PEOPLE advertise USDA Choice beef and label each package of beef to show our Choice Grade.

Q. How can the trimming of meats affect the price a person pays when buying meat?

A. A customer pays about 10¢ to 13¢ per ounce for meats on an average. If two or three ounces of fat are left on, a customer may pay 20¢ to 40¢ per pound more for edible meat.

Q. When companies advertise Grade A fryers, is that just a shortened title for USDA Grade A fryers?

A. Grade A fryers are different from USDA Grade A fryers. At Food Town we assure customers of top quality poultry by placing a USDA Grade A Shield on each package.

Q. How does a person know the grade of poultry they purchase at Food Town?

A. Each Food Town package of poultry has a USDA Grade A shield on the price label.

Q. What is meant by the term "open code dated"?

A. This describes a procedure for putting a code date on a package of meat. This date tells when that meat item should be removed from the meat case. This assures the customer of getting fresh meat at all times.



USDA CHOICE FULL CUT  
**Boneless Round STEAK**  
**\$1.17**  
lb.



USDA CHOICE BEEF  
**SIRLOIN STEAK**  
**\$1.47**  
lb.

USDA CHOICE BONELESS  
**STEW. BEEF**  
**87c**  
lb.

USDA CHOICE BEEF  
**T-BONE STEAK**  
**\$1.57**  
lb.

USDA CHOICE CHUCK  
**BONELESS ROASTS**  
**77c**  
lb.

USDA CHOICE RUMP OR SIRLOIN  
**Tip Roasts..... lb. \$1.67**  
USDA CHOICE CHUCK  
**Boneless Steak lb. 97c**



USDA CHOICE  
**Rib Eye Steak.. lb. \$2.77**

USDA CHOICE TOP ROUND STEAK OR TOP  
**Round Roast... lb. \$1.47**

USDA CHOICE BOTTOM RD. STEAK OR BTM.  
**Round Roast... lb. \$1.37**

FRESH 80% LEAN  
**Ground Chuck.. lb. 97c**

USDA CHOICE WHOLE  
**BEEF RIBS**  
18 TO 24 POUNDS AVERAGE  
**\$1.07**  
lb.

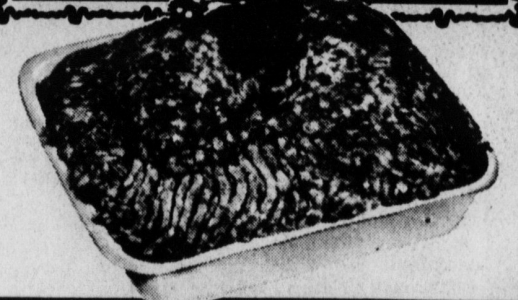
SWIFT'S PREMIUM  
**HOSTESS HAMS**  
4-lb. CAN  
**\$7.48**  
SLICED FREE

USDA CHOICE  
**CUBED STEAK**  
AVE. SIZE PKG.  
**\$1.47**  
lb.

USDA CHOICE SHOULDER  
**Boneless Steak lb. \$1.07**  
SKINNED AND DEVEINED  
**Sliced Beef Liver lb. 48c**

USDA CHOICE BONELESS  
**SHOULDER ROASTS**  
**97c**  
lb.

3 POUNDS OR MORE  
**Ground Beef**  
**77c**  
lb.



FRYER DRUMSTICKS OR  
**FRYER BREASTS** | **89c**  
FRESH  
**FRYER THIGHS** | **79c**

FRESH TENDER LEAN  
**Pork Steaks.... lb. 99c**

FISH FILLETS  
**Ocean Perch.... lb. 89c**

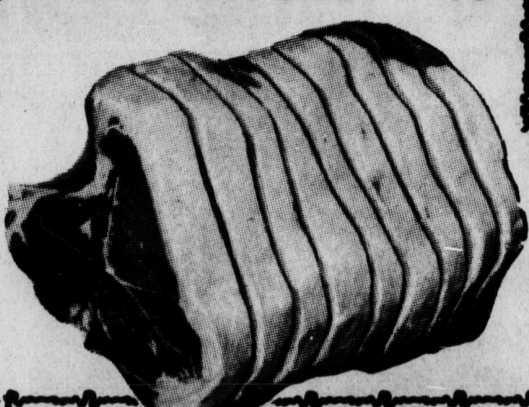
DRUMSTICKS, NECKS, WING  
**Turkey Parts... lb. 39c**

SHENANDOAH BREAST  
**Turkey Roast.. 2-lb. \$2.99**  
Pkg.

HYGRADE FULLY COOKED  
**Canned Ham... 3-lb. \$4.99**  
Can

16 TO 18-LB. GOLDEN STAR  
**Armour Turkeys lb. 59c**

FROSTY MORN MARKET  
**Sliced Bacon... lb. 99c**



1/4 LOIN SLICED INTO  
**Pork Chops**  
**97c**  
lb.

HORMEL BREAKFAST SAUSAGE  
**Lil' Sizzlers 12-oz. 89c**  
Pkg.  
JAMESTOWN PORK  
**Sausage 1-lb. 69c**  
CURTIS SLICED  
**Bologna 1-lb. 99c**  
Pkg.  
JAMESTOWN SLICED COUNTRY  
**HAMS 12-oz. \$1.99**  
Pkg.

HORMEL WRANGLER  
**FRANKS 1-lb. \$1.39**  
Pkg.  
JAMESTOWN  
**FRANKS 12-oz. 59c**  
CURTIS PARTY TREAT  
**FRANKS 24-oz. \$1.29**  
CURTIS SLICED  
**BACON 12-oz. 99c**  
Pkg.

