

Goforth Cemetery Project Approved

(From Page 1A)

the cemetery nearer the cabin. The plan called for recreating the period with animal paddocks, springhouse, smokehouse, fruit trees and a rail fence.

Quite a few plantings would have to be done in order to cover the "poor visual areas," according to

Gidley. A permanent caretaker would have to be hired to protect the property and volunteer guides hired during the seasonal showing.

This project, Gidley estimated, would cost between \$160,000 and \$185,000.

"The Bicen commission felt this

was more elaborate than was necessary," Gidley said. "I think the first plan would be a mistake also. The second plan is much more feasible."

The problems incurred in the planning to memorialize Preston Goforth included the reticence of the

N. C. Department of History and Archives to authenticate the Goforth cabin because there have been modifications made to the original homestead over the years.

The first plan would have included dealing with four different property owners. Gidley said 30,000 sq. ft. would have been needed from Charlie Blackwell; 22,000 sq. ft.

from Mrs. Artie Mae Goforth; 3,300 sq. ft. from R. Earl Harmon; and 1,800 sq. ft. from the W. A. Williams heirs.

Another problem the Bicen commission is likely to run into is the insistence of Mrs. Goforth that the cemetery is totally on her property. In an interview in 1976 Mrs. Goforth told The Mirror-Herald

she "ain't going to sell" the property where the cemetery is located.

The cemetery is 27 by 66 feet, contains five gravestones, the most legible of which dates to 1840. The original stone on Preston Goforth's grave is long since gone. There is a marker denoting the spot, which was placed there by the Frederick Hambricht Chapter of DAR.

Crowder's Mountain Park Is Now Open

Songs of 20 species of warblers and numerous other songbirds are a sign of springtime at Crowder's Mountain State Park six miles east of Gastonia.

Acquired in 1973 by the North Carolina Department of Natural and Economic Resources, the 1291 acre park is under interim use development with facilities for picnicking, hiking, nature study, fishing, wilderness camping, and horseback riding.

A small picnic area has a dozen

tables and a few grills. The nine-acre lake, open for fishing only, is good for bass and bream. Families and groups using wilderness campsites must backpack provisions including water into the campground one and one half miles from the park office. Pit privies and rock fireplaces are the only facilities currently provided for campers.

Two hiking trails beginning at the park office lead to the top of Crowder's Mountain and to the

pinnacle of Kings Mountain. Along the Fern Trail, a half-mile nature study trail, visitors can identify species of ferns and many varieties of mountain-type vegetation. The park also has three miles of bride trails.

Crowder's Mountain State Park is open daily from 8 a. m. until sunset. Visitors can reach the park by traveling U. S. 29-74 and S. R. 1125.

Belk

Your Happy Shopping Store



ENTIRE STOCK OF
BEDSPREADS AND DRAPERIES

20% OFF

OUR OWN STATE PRIDE BRAND

3 DAYS ONLY



USE YOUR BELK CREDIT CARD, IT'S CONVENIENT FOR YOU.

Pic'n Pay SHOES

Knockabout '77

SAVE \$5.20! Men's Genuine Pigskin Oxford has Padded Collar, Cushioned Insole. Regularly \$14.97

977

Price Good thru Saturday

* Open Evenings * MasterCard or BankAmericard

Prices Good Thru Saturday KM Plaza Shopping Center, Open Mon-Thurs 10-8 Fri. 10-9 Sat. 9-8 Sunday 1-6

Get to know us; you'll like us.®

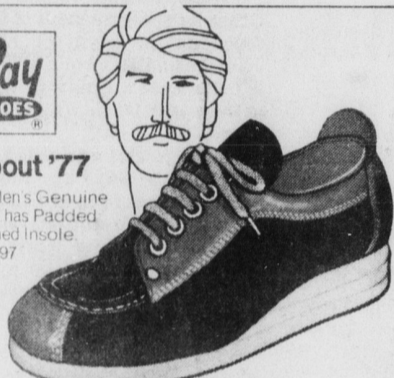


Photo By Lib Stewart

LEGION CELEBRATES BIRTHDAY — Mrs. Jackie D. Barrett, treasurer of American Legion Unit 155, cuts the first slice of birthday cake as State Commander J. B. Trexler, Jr. of Salisbury, left, and Post 155 Commander Rick Moore of Kings Mountain look on. Post 155 recently celebrated the 58th anniversary of the American Legion at a Post supper for auxiliary members and Legionnaires at the American Legion Building.

Special Services Set

Rev. C. M. Tripplette, conference superintendent of the Western North Carolina Conference of the Pentecostal Holiness Church, will be speaker for special services April 15-17 at Kings Mountain Pentecostal Holiness Church at 508 Branch Street.

Services will be conducted nightly at 7 p. m. with two services on Sunday at 10 a. m. and 7 p. m.

Rev. E. M. Roberson, pastor, said the community is invited to worship in the special series of services.

Seaman Ends Training

Navy Seaman Apprentice Ted M. Rushing, son of Trudy Hinson of Country Club Dr., Kings Mountain, has completed recruit training at the Naval Training Center, Orlando, Fla.

During the eight-week training cycle, trainees studied general military subjects designed to

prepare them for further academic and on-the-job training in one of the Navy's 85 basic occupational fields.

Included in their studies were seamanship, close order drill, Naval history and first aid.

He joined the Navy in December 1976.

You can talk to me about

ANY type of Life Insurance

Don't feel you have to go to one place for life insurance planning, to another for annuities, group, hospitalization, disability income, education and retirement plans.

I can take care of all your personal, family, and business insurance needs — because of my many years of experience in helping people with a variety of coverage and protection programs, and because I have the facilities and know-how of a great insurance company behind me.

If you have an insurance need, call me today.

LOU SABETTI

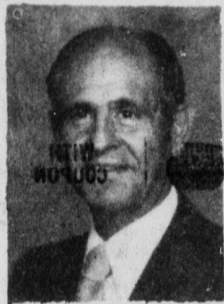
864-4521 739-2640

Registered Representative

Metropolitan

Where the future is now

Metropolitan Life Insurance Company, N. Y., N. Y.



SNAPPER FAST. TWO WAYS.



- 5 forward speeds & reverse.
- Sealed chain & gear transmission.
- Floating cutter suspension.
- 26" or 30" cuts.
- Optional electric starter.
- Large capacity bag mounted between handles.
- Vacuum action.
- Push type, 18" and 21" cuts.
- Self-propelled, 21" cut.
- 6 forward speeds.
- Perfect balance.
- 5 HP, 8 HP or 10 HP.
- Rear-wheel drive.

SNAPPER

All Snapper mowers meet A.N.S.I. safety specifications.



KINGS MOUNTAIN **FARM CENTER** 126 W. GOLD ST 739-5111