

JOHN TRIA, JR.

**Receives Doctor's Degree**

John Joseph Tria Jr. recently graduated in June from Florida State University with a Doctor's degree in Physical Chemistry.

John is a 1964 graduate of Kings Mountain High School and a 1968 graduate of Duke University. He served two years in the U. S. Army.

He is the son of Mr. and Mrs. John Tria Sr., and grandson of Mr. and Mrs. Thomas E. Wilson, all of Route 2, Kings Mountain.

Married to the former Barbara Hoffman of Tallahassee, he is presently employed as Research Associate at Florida State.

**Barry**

**Stars At**

**Pineville**

Gene Barry, best remembered as the cane swinging Bat Masterson and his leading roles of Amos Burke in "Burke's Law" and Glenn Howard in "Name of the Game," will open at the Pineville Dinner Theatre on July 12th and appear nightly (except Mondays) through August 14th.

For Barry's first appearance in Charlotte, he will play Ray Whitehall, a suave talk show host reminiscent of his earlier roles. In a new comedy by Don Appell entitled "Hot Shot."

For advance reservations phone 542-8481.

"Hot Shot," billed as a comedy by its playwright director, is also a murder mystery cum love story in the true tradition of an Alfred Hitchcock classic. Early in the play, the audience witnesses a killing and experiences the anguish and humor of the situation as the cast of nine attempt to unravel the threads of deception.

Joining Barry in the cast will be his lovely and talented wife Betty Claire Barry, with whom he recently toured in "Fiddler on the Roof" where they recreated the world-acclaimed roles of Tevye and Golde.

In addition to being a seven time veteran of the Broadway stage in dramatic roles as well as musical comedies, Barry is equally at home on the silver screen (having starred in 14 major motion pictures), in nightclub, concerts, and as spokesman for many worthy causes including Multiple Sclerosis, Cub Scouts of America, Little League and the National Democratic Party.

Doors open for cocktails, buffet dinner and show at the Pineville Dinner Theatre at 6:30 p. m. There are special Saturday matinees scheduled as well as fund raising events and discounts for groups.



**THE BEEF PEOPLE**

All W-D BRAND steaks and roasts are closely trimmed of excess bone and fat, BEFORE they're weighed and sold. You don't pay steak prices for meat scraps. When you buy W-D BRAND beef, you know what you're getting for your money...more choice meat...less waste.

**OPEN SUNDAY**

**1-7**

\* KINGS MOUNTAIN PLAZA

**HARVEST FRESH**



(NEW CROP)

**HARVEST FRESH U.S. NO. 1 WHITE POTATOES**

POLY BAG **\$1.09**  
10-LB. BAG

HARVEST FRESH FIRM HEADS OF GREEN CABBAGE... 12¢  
HARVEST FRESH GREEN BEANS... 39¢  
HARVEST FRESH SWEET YELLOW ONIONS... 3 BAG 89¢

HARVEST FRESH SWEET WESTERN PLUMS... 39¢  
LB.

HARVEST FRESH SWEET WESTERN CANTALOUPE... 59¢  
HARVEST FRESH CUCUMBERS... 6 FOR 49¢  
HARVEST FRESH TART WESTERN LEMONS... 11 FOR 89¢

HARVEST FRESH PEACHES... 29¢  
LB.

**FROZEN FOOD**

THRIFTY MAID ICE MILK OR SUPERBRAND SHERBET OR ICE CREAM

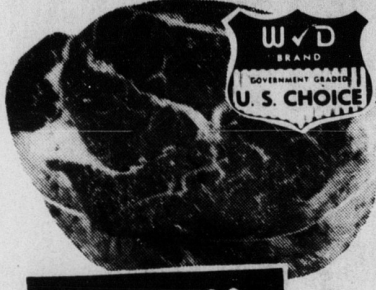
ALL FLAVORS **78¢**

HALF GALLON SUPERBRAND WHIP TOPPING... 2 9 OZ. CUPS 88¢  
TASTE-O-SEA FLOUR, FISH OR PERCH DINNERS... 9 OZ. PKG. 59¢  
TROPHY FRESH FROZEN STRAWBERRIES... 10 OZ. PKGS. \$1.00

GOLD KING HUSHPUPIES... 2 LB. PKG. 99¢  
DIXIANA CUT OKRA... 18 OZ. PKG. 69¢  
WHAT-A-BITE CHEESEBURGER... 4 CT. PKG. \$1.49

MORNING STAR FARM LINK SAUSAGE, SAUSAGE PATTIE OR BACON STRIPS... 8 OZ. PKG. 99¢

ICE CREAM SANDWICHES... 99¢  
SUPERBRAND ICE CREAM BARS OR 12 CT. PKG.



**BONELESS**

W-D BRAND U.S. CHOICE BONELESS

KINGS MOUNTAIN, N.C.

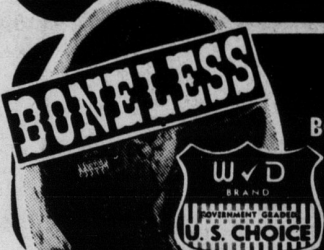
**CHUCK ROAST**

**89¢**  
LB.



W-D BRAND U.S. CHOICE CUBE STEAK

**\$1.49**  
LB.



W-D BRAND U.S. CHOICE BONELESS FULL-CUT ROUND STEAK

**\$1.49**  
LB.



**HORMEL CANNED HAM**

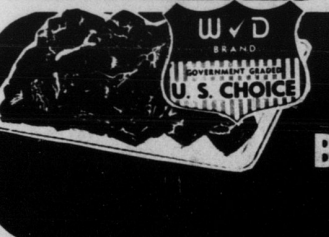
**3 \$3.99**  
LB. CAN

W-D BRAND U.S. CHOICE BONELESS SHLD. ROAST... 129¢  
W-D BRAND U.S. CHOICE BONELESS BOTTOM ROUND ROAST... 129¢  
W-D HANDI-PACK GROUND BEEF... 5 LB. PKG. \$3.99  
FRESH PORK WHOLE OR HALF... 14-17 LB. AVG. 89¢  
HAMS... 4-8 LB. AVG. 89¢  
PICNICS... 69¢  
FRESH PORK... (1/2 LOIN) 129¢  
ASST. CHOPS... 129¢  
TYSON CORNISH HEN... 24 OZ. SIZE 129¢  
QUANTITY RIGHTS RESERVED... PRICES GOOD THRU SUNDAY JULY 10, 1977

**DAIRY BUYS**

SUPERBRAND COTT. CHEESE... 2 LB. CUP \$1.09  
BORDEN SINGLE SLICES CHEESE... 12 OZ. PKG. \$1.09  
CHIFFON WHIPPED MARGARINE... 1 LB. CUP 69¢  
LAND-O-FROST... (ALL VARIETIES) SLICED MEATS... 3 OZ. PKG. 39¢  
ARMOUR'S FRESH FROZEN TURKEY NECKS, HINDQUARTERS OR DRUMSTICKS... 49¢

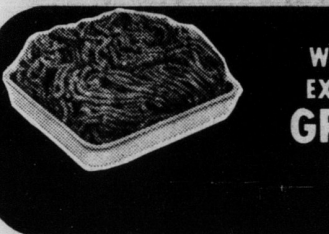
SLICED BEEF LIVER... 59¢  
HILLSHIRE FARM REGULAR, BEEF, OR HOT SMO. SAUSAGE... 129¢  
SUNNYLAND FRESH S.C. LINK SAUSAGE... 22 OZ. PKG. \$1.99  
OSCAR MAYER BEEF FRANKS OR WIENERS... 1 LB. PKG. \$1.19  
OSCAR MAYER SLICED BACON... 1 LB. PKG. \$1.49  
JAMESTOWN OR PINKY PIG FRESH PORK SAUSAGE... 1 LB. PKG. 79¢  
DRESSED CROAKERS... 69¢  
JESSE JONES FRESH PORK SAUSAGE... 12 OZ. PKG. \$1.09



W-D BRAND U.S. CHOICE LEAN BONELESS STEW

(3 LBS. OR MORE)

**99¢**  
LB.



W-D BRAND EXTRA LEAN GROUND BEEF

(3 LBS. OR MORE)

**99¢**  
LB.



TALMADGE FARM, F.F.V. OR HICKORY MTN. WHOLE OR HALF COUNTRY HAM

**\$1.09**  
SLICED  
12-15 LB. AVG. LB. \$1.19

THRIFTY MAID ICE MILK OR SUPERBRAND SHERBET OR ICE CREAM

ALL FLAVORS **78¢**

HALF GALLON SUPERBRAND WHIP TOPPING... 2 9 OZ. CUPS 88¢  
TASTE-O-SEA FLOUR, FISH OR PERCH DINNERS... 9 OZ. PKG. 59¢  
TROPHY FRESH FROZEN STRAWBERRIES... 10 OZ. PKGS. \$1.00

GOLD KING HUSHPUPIES... 2 LB. PKG. 99¢  
DIXIANA CUT OKRA... 18 OZ. PKG. 69¢  
WHAT-A-BITE CHEESEBURGER... 4 CT. PKG. \$1.49

MORNING STAR FARM LINK SAUSAGE, SAUSAGE PATTIE OR BACON STRIPS... 8 OZ. PKG. 99¢

ICE CREAM SANDWICHES... 99¢  
SUPERBRAND ICE CREAM BARS OR 12 CT. PKG.



**ASTOR FRUIT COCKTAIL**

**4 \$1**  
16 OZ. CANS  
LIMIT 4 WITH \$7.50 OR MORE FOOD ORDER



**SHORTENING**

**3 99¢**  
LB. CAN

THRIFTY MAID diet OR REGULAR PEPSI... 64 OZ. BOTTLE 79¢

THRIFTY MAID TOM. JUICE... 2 46 OZ. CANS \$1.00  
THRIFTY MAID SELF RISING OR PLAIN FLOUR... 5 LB. BAG 49¢  
PILLSBURY PLUS CAKE MIXES... 18 1/2 OZ. PKG. 69¢  
THOMPSON'S CORN MUFFIN MIX... 5 7 OZ. PKGS. \$1.00



CAMPBELL'S CHICKEN NOODLE O'S CHICKEN W/ RICE OR CREAM OF CHICKEN SOUP

**5 \$1**  
10 1/2 OZ. CANS



**DIXIE DARLING LARGE SANDWICH BREAD**

**3 \$1**  
24 OZ. LOAVES



**BATHROOM TISSUE**

**4 66¢**  
ROLL PKG.

DIXIE HOME TEA BAGS... 100 CT. PKG. \$1.49  
THRIFTY MAID HOT DOG CHILI SAUCE... 4 10 1/2 OZ. CANS \$1.00  
THRIFTY MAID CORNED BEEF... 12 OZ. CAN 89¢  
WISHBONE 1000 ISLAND, FRENCH OR ITALIAN SALAD DRESS... 2 8 OZ. BTL. \$1.00  
THRIFTY MAID CATSUP... 32 OZ. BTL. 69¢  
PERSONAL SIZE SOAP... 3' OFF LABEL IVORY... 4 BAR PACK 56¢  
EAGLE BRAND CONDENSED MILK... 15 OZ. CAN 63¢  
PILLSBURY READY TO SERVE FROSTINGS... 16 1/2 OZ. SIZE 89¢



**CHEK DRINKS**

**2 \$1**  
64 OZ. BTL.



**THRIFTY MAID TOMATOES**

**4 \$1**  
16 OZ. CANS  
LIMIT 4 WITH \$7.50 OR MORE FOOD ORDER



**ARROW BLUE, WHITE, COLD WATER OR NO PHOSPHATE DETERGENT**

**66¢**  
49 OZ. PKG.