

Trojans Here Friday

(Begins On Page 8A)

"Chase is a much better team than Ashbrook," says Jones, "so we have our work cut out for us. We can beat them if we play ball."

Chase sports one of the best passing quarterbacks in the conference in Alan Stroud, and two of the finest runners in Chuck McSwain and Keith Crenshaw.

Chase, in fact, has never lost a ballgame in which Stroud started at quarterback. Stroud was the backup quarterback last year when the Mountaineers beat the Trojans. He came into the game in the second half after starter Ron Weathers was injured, then led the Trojans to eight straight victories going into the playoffs. Weathers started again in the playoffs and Chase lost to Shelby.

Stroud has already thrown for five touchdowns in two games this year, including three last week against North Gaston. Against Ashbrook in the season's opener three weeks ago, Stroud either scored or passed for all of Chase's touchdowns.

Crenshaw, a 160-pounder, was player of the year in the SWC last year and is one of the

quickest backs in the state.

The Trojans, like Kings Mountain, have a lot of people playing both ways, so the winner of Friday night's contest could be the best conditioned and the one that can take the most punishment.

Chase has fine receivers for Stroud in split end Dwayne Williams and flanker

Derrick Harris, and they have fine offensive and defensive lines. If the Trojans have a weakness, it's their defensive ends, who are inexperienced.

Coach Jones said his staff will probably make some personnel changes Friday night. The coaches weren't at all pleased with the performance of some of the Mountaineers last week and may call on some

junior varsity players to help out.

With at least four clubs of almost equal talent (KM, Chase, Shelby and South Point) in the race for the SWC title, neither the Mountaineers nor Trojans can afford a loss Friday night. The loser will not be mathematically eliminated from the title picture, but will have a tough time coming back and winning it.

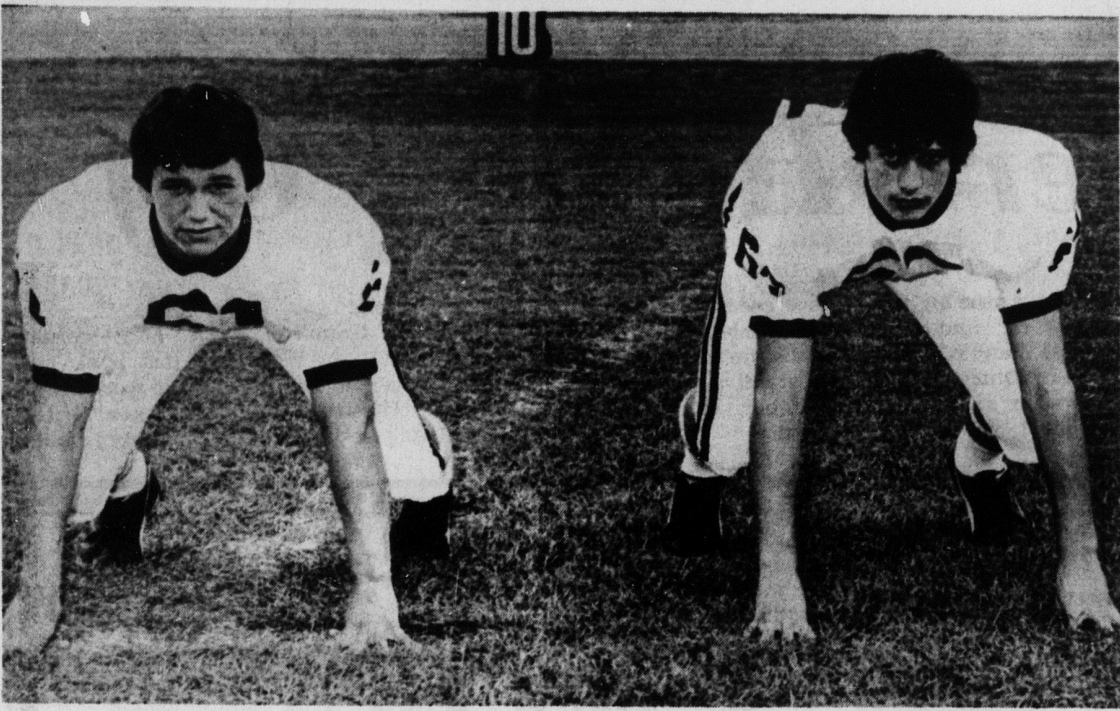


Photo by Gary Stewart

KMHS GUARDS - These two juniors will be in the starting lineup Friday when the Mountaineers host Chase in a Southwestern Con-

ference game. On the left is Alan Putnam, who starts on offense, and on the right is Norman Phillips, a defensive starter.

Pats, Jayvees Play

Kings Mountain County, and the KMHS football fans will have two chances to see some exciting play today at John Gamble Stadium.

The Kings Mountain Junior High Patriots open their Western Conference schedule at 4 p.m. with a game against West McDowell

jayvees put their unbeaten mark on the line at 7:30 against R-S Central.

The Patriots, under third-year coach Joe Speight, are one of the favored teams in the new junior high loop, which includes teams

from Cleveland, McDowell and Catawba counties.

Speight has a quick team with a lot of size and feels that if the Patriots play up to their capabilities they could possibly have an unbeaten season.

The Pats are running the I-formation, same as the KMHS Mountaineers, and they'll get a lot of good running from quarterback Trent Thomasson, halfbacks Tony Boyce and Tim Bell and fullback Chris Wright.

Up front, Speight will be counting heavily on ends Tim Chapman and Mark Smith, tackles Darrell Strong and Calvin Wofford, guards Marcus Hager and

Mark Scruggs and center Wally Davis.

The KMHS Jayvees put a 1-0-1 record on the line against a tough R-S Central. The jayvees have beaten Burns 38-6 and tied Shelby 0-0.

Dennis Dukes, a former R-S Central running back, will serve as head coach of the Little Mountaineers. The varsity assistants take turn about in calling the shots for the jayvees.

The big plus for the jayvees thus far has been a strong ground game and a hard-hitting offensive line and defense.

The jayvees stay at home next week, hosting North Gaston's Little Wildcats.

Girl Netters Drop Opener

Kings Mountain High's girls tennis team opened its 1977 fall season Monday at R-S Central the same way it ended in the spring ... losing a 5-4 decision.

The Mountaineers, who lost five 5-4 matches in the spring, split their six singles matches but dropped two of the three doubles events.

Winning singles for the Mountaineers were Bridgette White, Kim Gladden and Nancy

Lee. KM's only doubles team to win was Gladden and Lee.

"We have a fairly balanced team," noted Coach Ed Guy, "but R-S had some outstanding players in the top positions and weak players in the bottom positions."

"Our girls at the top need to improve and be more consistent. We could have won the match but we made a lot of errors."

The Mountaineers play their first home match today at 3 p.m. against Crest. They travel to South Point on Monday.

THE SCHEDULE

SEPTEMBER
15, Crest
19, at S. Point
21, Shelby
26, at E. Burns

OCTOBER
3, at Chase
6, R-S Central
10, at Crest
13, S. Point
17, at Shelby
20, E. Ruth
24, at Burns
27, Chase

NOVEMBER
2-3, Sectional tournament at Shelby
9-10, State tournament

\$3¹¹ to \$5⁴⁶ Per Hr.

Plus
Fantastic Fringe Benefits

Call Dick Adair Or John Davis

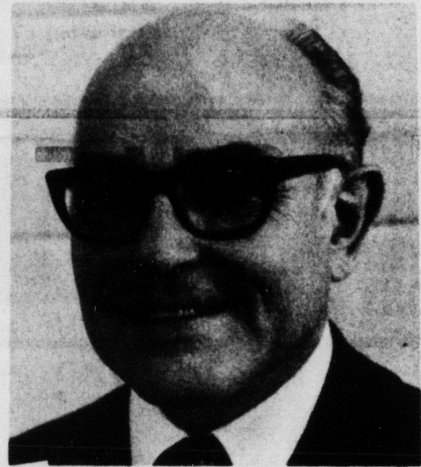
At

(704) 399-6363 (Collect)

For Complete Information

N.C. AIR GUARD

An Equal Opportunity Unit



JAMES E. (JIM) AMOS

CANDIDATE FOR DISTRICT 5 COMMISSIONER



I FEEL THERE SHOULD BE NO QUESTION...

INSTALL AT LEAST 2 STOP LIGHTS, MAYBE 3 (OR 4-WAY STOP SIGNS) ON EAST GOLD STREET.

OUR CHILDREN ARE OUR MOST PRECIOUS POSSESSIONS.



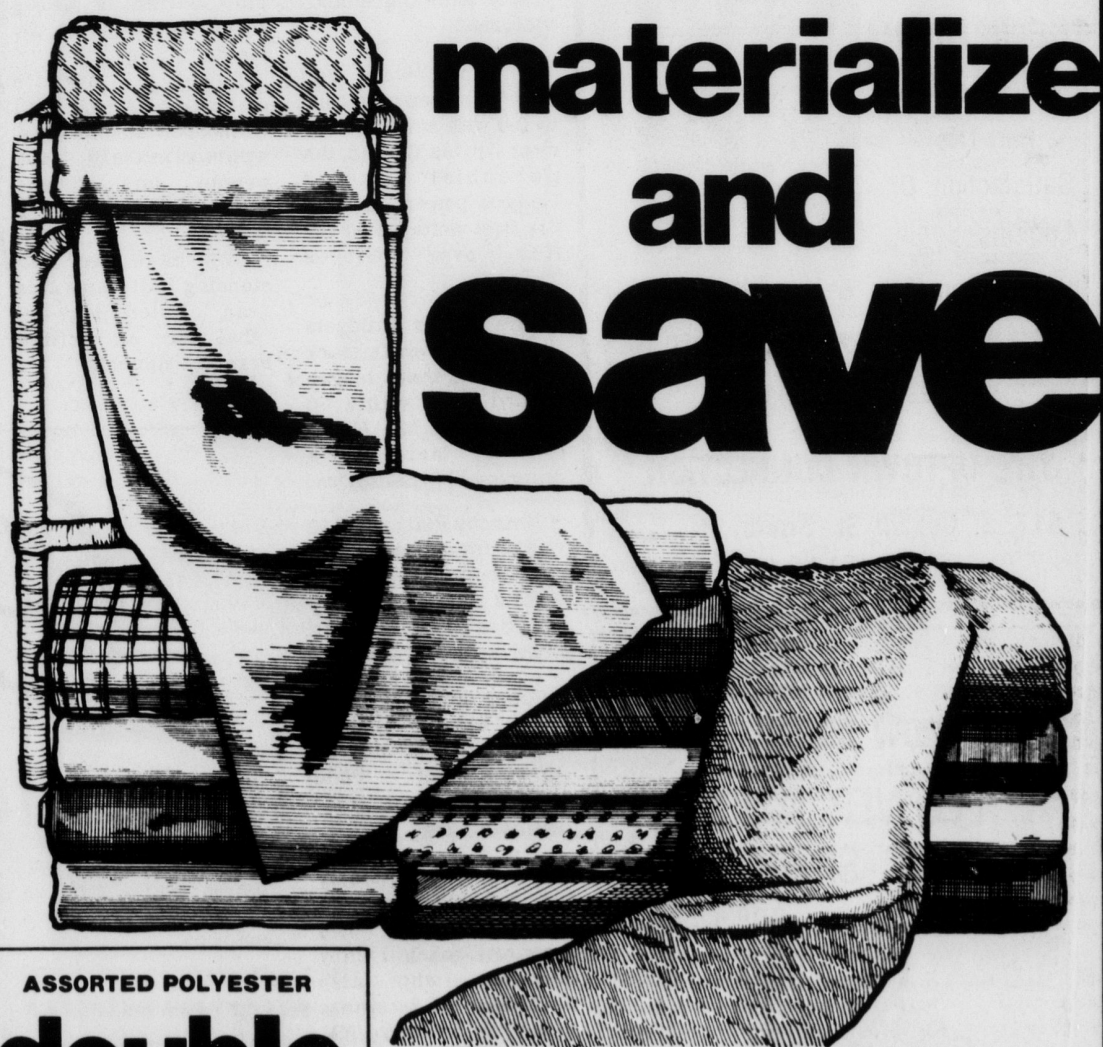
I PLEDGE TO RUN A GENTLEMAN'S CAMPAIGN AND CHALLENGE MY OPPONENTS TO LIVE BY THE GOLDEN RULE

PAID POL. ADV.

TG&Y FABRIC SHOP

WEST GATE PLAZA - SHELBY ROAD

PRICES GOOD THURSDAY, FRIDAY AND SATURDAY



ASSORTED POLYESTER double knit

The fabric for all seasons and all reasons. 100% Polyester. 58/60" Wide. Choose from a large variety of colors, textures and weaves. Machine wash warm, tumble dry, remove promptly, and never iron.

2 YARDS \$1

REMNANT DAY SALE

10 to 50% off regular price! Various lengths, widths and fiber contents. Shop early for best selection.

SAVE 20 TO 75%

GABADREME SOLIDS

59/60" Wide. 100% Two-Way Texturized Dacron® Polyester. Machine washable.

1.98 YD.

SAVE 33% CIMARRON DRESS SUEDE SOLIDS

100% Avetex® Polyester. Machine wash on delicate cycle. Ideal for dresses or jump-suits. 45/46" wide.

REG. \$2.98 YD

2.97 YD.

INCLUDES NEW FALL FABRICS