



YOUR COST
A \$4397

YOUR COST
B \$5997

YOUR COST
C \$993



YOUR COST
D \$20997

YOUR COST
E \$2197



YOUR COST
F \$14997



YOUR COST
G \$883

YOUR COST
H \$597

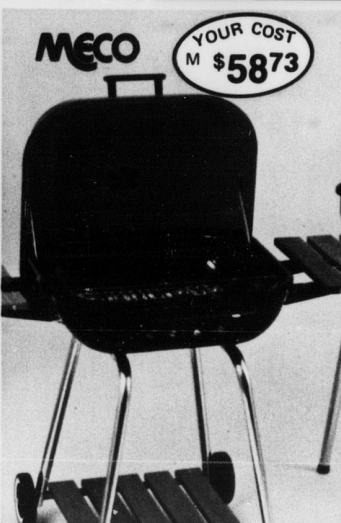


YOUR COST
\$2197 **MECO**

YOUR COST
K \$697

YOUR COST
L \$597

MR. CHEFTENDER



MECO **YOUR COST**
M \$5873



BUDDY L

YOUR COST
N \$2197

MECO

YOUR COST
P \$3688

BAR-B-QUES AND ACCESSORIES

(A) **BUDDY L DELUXE SMOKER WAGON.** Features Recessing door with full-view heat-treated glass window, warming oven. Adjustable six-position fire-pan with two chrome plated cooking grids and large vent control. Front worktable and side shelf with towel bar handles. Large bottom shelf. U. L. listed motor. Chrome plated spit and tines. Wide track wheels. Cooking grid size: 13 1/4"x23". Wt. 40 lbs.
6685/NB Ret. \$69.00 **ONLY \$43.97**

(B) **CONTEMPRA ELECTRIC CHAR-B-QUE TABLE TOP GRILL.** Features 8-position control knob. Lets you choose the heat you need from 200°F to 600°F. 11"x17" cooking surface, rust proof, aluminum housing. Lava Rock briquets supplied. Wt. 18 lbs.
ECB-3/CAJ Ret. \$89.95 **ONLY \$59.97**

(C) **CONTEMPRA PORTABLE ACCESSORY CART.** Tubular aluminum legs with hard board wood-grain top. Wt. 8 lbs.
ST-6/CAJ Ret. \$22.95 **ONLY \$9.93**

(D) **TURCO GAS BARBECUE GRILL.** 523 square inches of cooking surface individually controlled. Twin 20,000 BTU burners. Dual heat controls for more precise cooking. Up front for comfort and convenience. Front utility shelf with butcher block styling. Turcolite solid state automatic igniter starts grill at a touch of the finger. Two adjustable heavy duty nickel chrome plated cooking grids. Permanent Colorado lava rock. Includes 20 lb. tank, hose and regulator. Wt. 110 lbs.
4905/YA Ret. \$289.95 **ONLY \$209.97**

(E) **ELECTRIC ROTISSERIE** helps cook foods to a golden turn. Plugs into any 110-volt outlet. Fits all Turco gas and electric grills.
8832/YA Ret. \$27.97 **ONLY \$21.97**

(F) **MECO PORCELAIN GAS COOKER.** 375 square inch cooking surface. Uses LP or natural gas. Hood and bowl feature heavy gauge. D48 drawn steel sealed in porcelain. Hood and bowl plus all critical gas connections are completely preassembled and tested. Burner features 28,000 BTU input which allows higher temperatures at lower valve settings for fuel economy. Push-to-turn, removable heat control knob. Big stay-cool wooden handles on hood and bowl. 3-way pedestal base. 20 LBS LP Tank and 6 LBS of volcanic rock. Wt. 91 lbs.
7049/MD Ret. \$199.95 **ONLY \$149.97**

(G) **MR. CHEFTENDER RANGER 4 PIECE BAR-B-QUE SET.** Includes: stainless steel turner, fork, 16" long and a special grill brush scraper to clean the grill.
2R148/MP Ret. \$15.00 **ONLY \$8.83**

(H) **MR. CHEFTENDER RANGER BAR-B-QUE TOOL SET.** Three piece set consists of all stainless steel turner, fork and 16" long.
2R135/MP Ret. \$10.00 **ONLY \$5.97**

(J) **ROTISSERIE ADAPTOR KIT.** Comes complete with 115 volt-60 cycle UL listed and CSA approved motor with spit rod and meat forks. Fits all Meco Grills.
1290/MD Ret. \$32.95 **ONLY \$21.97**

(K) **REDWOOD FOLD-AWAY SIDE TABLE.** Size 8 9/16"x15 1/4". Fits all Meco Grills.
1201/MD Ret. \$9.95 **ONLY \$6.97**

(L) **MR. CHEFTENDER RANGER SOLID STATE ELECTRIC CHARCOAL LIGHTER.** Three prong safety cord. Noryl thermoplastic handle, with all stainless steel element support. U. L. listed. 110-115 volts. 500 watts.
2R162/MP Ret. \$10.00 **ONLY \$5.97**

(M) **MECO SWINGER II DELUXE SMOKER GRILL.** Fully hooded barbecue grill features adjustable vents in hood and bowl to regulate air flow, temperature and desired smoke flavor. One piece tilt-away hood with new inside hinge. Plus two attractive Redwood vinyl tables that attach and detach easily. Matching leg shelf for additional storage. Wt. 41 lbs.
4405/MD Ret. \$89.95 **ONLY \$58.73**

(N) **BUDDY L 21" SQUARE SMOKER.** Adjustable 368 square inch chrome plated cooking grid. Durable heavy gauge steel finished in heat resistant paint. Designed for easy assembly. 1" plated tubular legs. Complete heat control through easily adjustable upper draft control. Stained wood front and back lid handles. Wt. 26 lbs.
8008H/NB Ret. \$32.50 **ONLY \$21.97**

(P) **MECO SWINGER II SMOKER GRILL.** Fully hooded barbecue grill features adjustable vents in hood and bowl to regulate air flow, temperature and desired smoke flavor. One piece tilt-away hood with new inside hinges. Pre-Assembled. Wt. 32 lbs.
4400/MD Ret. \$59.95 **ONLY \$36.88**

(Q) **DOUBLE HIBACHI ON FLOOR STAND.** The stand-up Hibachi on base with 2 wheels is easy to move and also has tool rack with 3 cooking tools included. Height is adjustable to 30". Wt. 20 lbs.
8216/MAC Ret. \$16.99 **ONLY \$13.77**

(R) **BUDDY L 18" PORTABLE PICNIC GRILL.** Heavy Duty grill with wood grip stick shift, four-position grid adjuster. Chrome plated cooking grid. Sturdy tubular aluminum legs with carry handles. Wt. 7 lbs.
1839/NB Ret. \$12.95 **ONLY \$7.87**

(S) **DOUBLE 10"x17" TABLE TOP HIBACHI.** Stove with a cast iron body on wooden support. Two grates with wood handles can be regulated to four different positions. Wt. 16 lbs.
8017/MAC Ret. \$7.50 **ONLY \$5.97**

(T) **BUDDY L 24" PORTABLE FOLDING BRAZIER.** Deep bowl, chrome plated patented "Sunburst" grid. Wood grip stick shift, four-position grid adjuster. Tubular folding tripod legs with sturdy rear axle and wide track wheels for easy storage and portability. Wt. 13 lbs.
2325/NB Ret. \$16.95 **ONLY \$10.97**



YOUR COST
Q \$1377



YOUR COST
S \$597



YOUR COST
R \$787



YOUR COST
T \$1097