

KM Police Taking New Applications

The Kings Mountain Police Department is taking applications through 5 p.m., Fri., May 18.

Applicants must be high school graduates, ages 21-35, be at least five feet-seven (males) and five-four (females). Male applicants should weigh no less than 140 (110 females) with height and weight proportionate. Uncorrected vision must be 20-100, corrected to 20-20. Hearing must be normal as determined by an audiometric test.

Acting Chief J.D. Barrett said all applicants will be given a written

test, agility test and have a thorough investigation conducted into their backgrounds.

All applicants considered for employment undergo a one year probation during which they may be dismissed at any time for determined general unsuitability or for cause.

Applications are being taken in Chief Barrett's office Monday through Friday from 9 a.m. until 5 p.m.

KMPD is an equal opportunity employer.

KM Rescue Squad Not Raising Funds

The Kings Mountain Rescue Squad board of directors state that the squad is not involved in a fund-raising drive.

Recently several area businesses have offered hot dogs for sale and have displayed collection jars bearing the name Kings Mountain Rescue Squad. There have also been door-to-door solicitations in the name of the squad.

Board members state the KM Rescue Squad has not been involved in any fund-raising projects for two years, not since the squad began operating under a county franchise with paid personnel.

Citizens are warned against the current misrepresented fund-raising project.

Center Gets Grover Surplus

(Story begins on page 1A)

authorized Police Comm. Martha Byers to contract with local service stations for gasoline and servicing of the police car. Mrs. Myers recommended that when the six month's contract expires with Philbeck Shell that a new six month's contract be let with Montgomery Gulf Station and alternate the use of both stations during the year. Previously, the town had contracted six months at a time with Knox Citgo (which is up for sale in Grover) and Philbeck Shell. Montgomery's Gulf is located in South Carolina about a half-mile from the town limits of Grover. Mrs. Byers explained that "with the gas situation the way it is we will probably need to use all the area stations." Comm. Herndon said the decision on where the police car

should be serviced "is up to Martha (Mrs. Byers), since that's her department." No bids are taken for services rendered by local stations. Herndon that new street marking signs are on order.

agreed to meet with developer Charles Wray who wants to build minimum of five homes "at a time" in the Grover area and is looking for land on which to locate them.

appointed all members of the board to serve with Mayor McCarter and Town Clerk Gloria Horton to a committee to begin negotiations with city of Kings Mountain officials for sewerage treatment for the town. Mayor McCarter was to call Chairman Jim Dickey and schedule the first meeting of the group.

approved installation of two lights in the parking lot of Grover ball park.

reimbursed, on motion of Martha Byers, by 2-1 vote with

Harold Herndon voting "no", \$800 in moving expenses to Police Chief Lionel Barnes. Barnes recently returned to Grover from Wilmington.

voted unanimously on motion of Comm. Keeter to stop installing temporary water taps to get away from "master meters" and problems with temporary connections requested by mobile home owners. The board discussed, without action, whether the town is obligated to run a permanent line for Ronald Queen in Spring Acres. Town Clerk Horton read minutes from the June 11, 1978 meeting where the board voted to install a temporary water line there to the Queen's new house until it could contract to have a six inch line installed. "We need a meter for each dwelling in town", Comm. Keeter declared.

voted to participate in the Region C Criminal Justice Legal Advisor's Project (LEAA) which

would provide 24-hour day legal advise for policeman at cost of approximately \$10 yearly.

received written opinion of legal counsel concerning conflicts of interest statute G.S. 14-284 which questioned Comm. Herndon's voting on requests for improvements to property he owns in Spring Acres. It reads, "In paving a street or other improvements, it appears that a member who would personally benefit by such improvements, we suggest board member request to be excused from voting on that particular issue."

Discussed, but took no action, on hiring a reserve officer for the town. Martha Byers told the board the town would pay no salary but would provide the officer's uniform, workmen's compensation and additional car expenses. Comm. Byers was asked to get full costs of the program and bring the matter up again during budget workshops.

TG&Y

REDUCED PRICE!

FABRIC SHOP

WEST GATE PLAZA - SHELBY ROAD

DOUBLE KNIT

HOURS: 9 - 9 DAILY - SUNDAYS 1 - 6

V.I.P. SUGAR CORD PRINTS

46% Fortrel Polyester, 54% Cotton. 44/45-inches wide. Reg. \$2.29 **1.77** YD.

Bright Cloud **QUANA PLAINS** save 13%

You'll look and feel great in stunning dresses, blouses, and lingerie made of 100% Quana® plains. 63/65" wide. It lends a certain elegance to anything you make of it. And it's easy to take care of too!

Reg. 3.98 **3.47** Yd.

DOUBLE KNIT

100% POLYESTER HEAT TRANSFER PRINTS. 58/60-in. WIDTH

2 YDS. \$1 While quantities last

FLAT FOLDS Values to 197 per yd.

Dancheck Woven **GINGHAM CHECKS** save 15%

Bright and cheerful Gingham Checks made of 65% Polyester and 35% Cotton is a woven blend to give you extra durability. This teams up with a popular and perky pattern to give you a fantastic look for your creations. 44/45" wide.

Reg. 1.49 **1.27** Yd.

Laundried **Gauze Prints**

For today's look in tops, select yards and yards from this collection of 44/45" wide Gauze material. It's ideal for Spring and Summer fashions, and comes in beautiful array of colors and patterns. 50% Fortrel® Polyester/50% Cotton.

Reg. 1.98 **1.57** Yd.

Summer soft fashion **BALLAD PLISSE PRINTS**

100% Cotton plisse prints that make summer dresses and tops you'll love to wear. The coolest summer fabric is cotton and it's so washable. 35/36" wide.

Regular 1.39 **97¢** Yd.

DOLLAR NOTIONS SALE

- Assorted plastic (Three for \$1) **BOBBINS** Your Choice **\$1**
- Ball point (2 Pkgs. \$1) **STRAIGHT PINS**
- 5 YDS. LACE**

EYELET EMBROIDERY

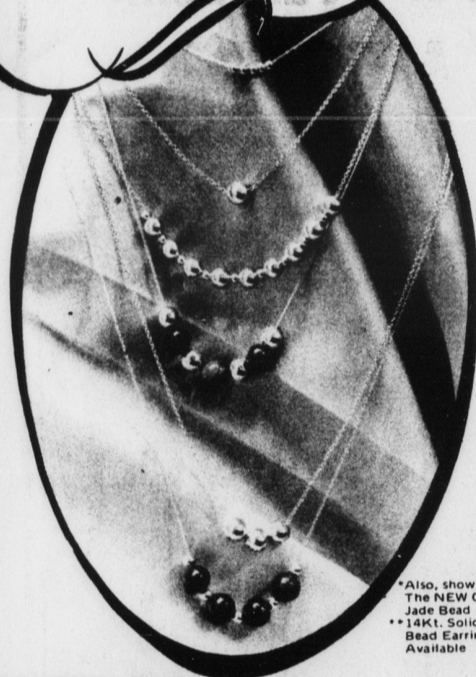
44/45-in. width. 66% Kodel polyester, 35% cotton. Machine wash. **\$1.97** YD. REG. 3.49 PER YD.

PRICES GOOD THURSDAY, FRIDAY, SATURDAY AND SUNDAY -

Add-a-Gold Bead...

...The Gift of Love that grows with the years

14KT. SOLID GOLD BEADS on 14KT. SOLID GOLD CHAINS



*Also, shown, left: The NEW Genuine Jade Bead
**14Kt. Solid Gold Bead Earrings Available

THE PERFECT GIFT!

Start with one bead on a chain... Add a bead for other gift occasions.

Now you can build a necklace of everlasting beauty, increasing in sentiment and value... inexpensively....one gold bead at a time.

- 14 Kt. Yellow Gold Reg. \$7.00 **7MM BALL \$2.99** Ea.
- Gold Filled. **CHAIN 30"** Inch
- 14 Kt. Yellow Gold **4 MM BALL \$1.50** Ea.
- 14 Kt. Yellow Gold **3 MM BALL \$1.00** Ea.
- 14 Kt. Gold **CHAIN 99¢** In.
- 14 Kt. Yellow Gold **CHAIN \$1.75** Ea.
- 14 Kt. Yellow Gold **CHAIN \$2.00** In.

DELLINGER'S JEWEL SHOP
Downtown Kings Mountain