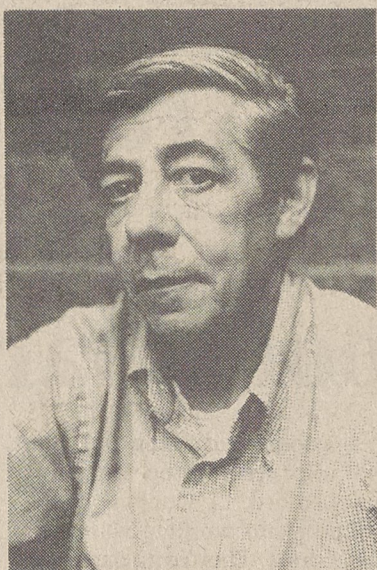


John Brady will begin art classes September 28 at A.B. Snow Studio on Margrace Road. Children's classes will begin at 4:30 p.m. that day. All supplies will be furnished for each lesson. Students will be given a chance to use different media each month in order to make them aware of how different supplies can be used creatively.

Brady has achieved much success in motivating students to create and enjoy art both as an artist and as an informed viewer. Call 379-5917 for more information.

Adult classes are handled in a different manner. Each month, Brady will do a lecture-demonstration, using a different



**JOHN BRADY**  
media each time. The lectures involve materials, art history and

other interesting facts and fantasies about art. Students do not paint in his adult class but may bring in work they have done elsewhere and have it criticized. Criticism is an excellent learning tool and provides all students more knowledge about how to view a painting. It is necessary for a student to be able to paint to attend these lectures. They will help anyone to appreciate art.

All classes will be held at the studio of A.B. Snow, 3600 Margrace Road. The adult class will meet at 7:30 p.m. on September 28 and the fourth Tuesday of each month from September through May. Fees will be charged. For more information, call 739-5917.



Photo by Gary Stewart

**CLUB CHARTERED** - Calvin Gaddy, left, and D.D. Phillips, right, of the Oasis Temple in Charlotte present a charter to Paul Falls, president of the new White Plains Shrine

**Club, Wednesday at a charter night banquet at the Depot Center. The new club has 60 charter members.**

Kings Mountain police reported five wrecks during the past week.

Steven Edward Rathbone of 28 Bennett Drive was treated for injuries at McGill Clinic Thursday after the moped he was operating was struck by a hit-and-run driver. Gary Sale investigated.

Vehicles driven by Donnie Ray Jackson of Pageland, S.C., and Mary Tate of Grover collided Friday at West King and Railroad Avenue. Damage to Tate's 1972 Ford was \$200. There was no damage to Jackson's 1971 International

truck. Johnny Belk investigated. A car driven by John William Childers of 1502 Northwoods Drive struck a parked car owned by Angela Odums of Route 4 Saturday in the parking lot of Durham Clinic. Damage was \$100 to the Odums car. There was no damage to Childers' car. Belk investigated.

Ed Sullivan Greer of 3200 Margrace Road told police he was driving west on King Street Sunday when his steering locked and he lost control of his car and struck a utility pole. Greer's 1971 Pontiac was a total loss and the utility pole was damaged.

Cars driven by Jacob Taylor of Gastonia and Ben Poston of Shelby collided Tuesday on East King Street. Damage was \$175 to Poston's 1977 VW and \$20 to Taylor's truck. Sgt. L.D. Beattie investigated.

Kenneth E Steffy, son of Juanita H. Steffy of 206 S. Gaston St., Kings Mountain, has

been promoted in the U.S. Air Force to the rank of technical sergeant.

Steffy is an avionics equipment technician at Shaw Air Force Base, S.C.

## Kenneth Steffy Is Promoted

**TG&Y<sup>®</sup>**  
**family center**

**You can EXPECT**  
**low prices at TG&Y!**  
*that's what stopping inflation is all about.*

**Store  
Hours:  
Mon.-Sat. 9-9  
Sun. 1 til 6**

# Thanks

**To the editor:**  
I'd like to take this opportunity to thank the Kings Mountain community for its support of the opening of the Waffle House.  
We'd like to say a special thank you to the Kings Mountain Economic Development Office and its director, Jerry King, and to the Kings Mountain Herald for all the work they did for us during our construction and grand opening.  
We have never had this kind of backing when we've opened other Waffle Houses. Without everyone's support, we would not have gotten off to such a good start.  
Thank you.

**Linda Barefoot,  
Area Supervisor**

## First Federal's customers won't have to give up their All Savers Tax Advantage

FIRST FEDERAL will allow you to further the tax advantages begun when you deposited into an All Savers Certificate.

**\*\*100% Guaranteed**

## \*\*Money Market Rates

## \*\*No Current Income Tax

**\*\*Unlimited Deposits above \$5,000.00**

Visit our office at 300 West Mountain Street for further information.

# First Federal Savings And Loan Association of Kings Mountain

300 W. Mountain Street  
Kings Mountain, N.C. 28086

 <p><b>MR. COFFEE</b> NORTH AMERICAN SYSTEMS, INC.</p> <p>GENUINE <b>MR. COFFEE</b> FILTERS</p> <p>200</p> <p><b>.92</b> ea. Mr. Coffee Filters plus 50¢ mail-in rebate* 200 ct. *See store display for details.</p>	 <p>CLAIROL</p> <p><b>Nice 'n Easy</b> the shampoo of haircolor</p> <p>50¢ OFF <b>ARRID EXTRA DRY</b> (LIGHT POWDER REGULAR SCENT)</p> <p>50¢ OFF <b>ARRID EXTRA DRY</b> REGULAR</p> <p><b>1.97</b> ea. Arrid or Arrid Extra Dry Price is 50¢ off label. Extra Drying Reg. or Lt. Powder. 6 oz. Limit 2.</p>	 <p><b>Listerine</b></p> <p><b>1.47</b> Listerine Mouthwash For clean breath and daily oral care. 18 oz. bottle. Limit 2</p>	 <p>Infant or Toddler Blanket Sleeper One piece. Flame safe fabric.</p> <p><b>4.97 3.97</b></p>
<p><b>1.36</b> RainTree Hand Body Lotion Greasess lotion with natural proteain. 10 oz. Reg. 1.98. Limit 2</p>	 <p><b>1.96</b> Clairol Nice &amp; Easy Hair Color Shampoos in. 1 application. Limit 2</p>	 <p><b>1.36</b> RainTree Hand Body Lotion Greasess lotion with natural proteain. 10 oz. Reg. 1.98. Limit 2</p>	 <p><b>2 \$1</b> FOR Evenflo Plastic Nurser Boilable. 8 oz. or 4 oz.</p>
 <p><b>Crunch 'N Munch</b> BUTTERY TOFFEE POPCORN WITH PEANUTS</p> <p><b>2 1.00</b> FOR Crunch 'N Munch A delicious treat of buttery toffee popcorn with peanuts. 5 oz. Limit 4.</p>	 <p><b>9.96</b> Placemat Set Four placemats, napkins and napkin rings. Assorted prints and colors.</p>	 <p><b>1.67</b> ea. Intercraft Metal Photo Frames Gold, silver or oak finish. 5x7" or 8x10".</p>	 <p><b>1.94</b> save 44% Keller Broom Rake 18" head with 22 tines. 48" wood handle. Reg. 3.47.</p>
 <p><b>IT'S FORTREL</b> That's all you need to know.</p> <p><b>2.47</b> yd. Fall Magic Florals By V.I.P. Fabrics. Perfect for dresses, prairie skirts! 50% Fortrel* polyester/50% rayon. Machine washable, permanent press. 44/45" wide on full bolts. Reg. 2.98 yd.</p>	 <p><b>1.77</b> yd. Main Street Interlock Prints The patterning will please you! 100% Fortrel* polyester. 60" wide on full bolts. Reg. 1.97 yd.</p>	 <p><b>2.27</b> yd. Tidbit Mini Dress Prints These mini designs will inspire you! 50% Fortrel* polyester/50% rayon. 44/45" wide on full bolts. Reg. 2.69 yd.</p>	 <p><b>IT'S FORTREL</b> That's all you need to know. Simply by Fortrel #9438</p> <p><b>2.27</b> yd. Weavers Cloth Plains From Wamsutta/Pacific. Delightful solids. 50% Fortrel* polyester/50% cotton. Permanent press. 44/45" wide on full bolts. Reg. 2.79 yd.</p>

TG&Y's policy is to always have advertised merchandise in adequate supply in our stores. In the event the advertised merchandise is not available due to unforeseen reasons, TG&Y will provide a Rain Check, upon request, in order that the merchandise may be purchased at the sale price when it becomes available, or you may purchase similar quality merchandise at the advertised price. It is the policy of TG&Y to see that you are happy with your purchases. • It is TG&Y's policy to be price competitively in the market. Regular Sale Prices may vary market by market, but the sale price will always be a reduction. • We will be happy to refund your money if you are not satisfied with your purchase. ***VISA® and MasterCard® accepted.***