

### Four On Dean's List

Four Kings Mountain area students were named to the dean's list for the fall semester at Clemson University.

To make the dean's list, one must maintain a grade point average of at least 3.5 (4.0 for all A's.).

Students earning honors included Tricia Renee Blalock, an

elementary education major from Kings Mountain; Leslie J. Hambright, an administrative management major from Grover; William D. McGill, a mechanical engineering major from Kings Mountain; and Laura Marie McGinnis, an administrative management major from Kings Mountain.

### Open Gate Club Meets

The Open Gate Garden Club met February 9 at the home of Mrs. Tom Trott.

Upon arrival, members were served dessert and coffee. Mrs. Trott, president, presided over

the business meeting. New officers were elected.

The program included an auction of items brought by the members. Mrs. Claude Hambright was auctioneer.



**BENITA DIANE SIPES**  
...Bride-Elect Of Kenneth Dean Moffitt Jr.

#### ENGAGED

Mr. and Mrs. Billy J. Sipes announces the engagement of their daughter, Benita Diane Sipes, to Kenneth Dean Moffitt Jr., son of Mr. and Mrs. K. Dean Moffitt Sr. of Bessemer City.

The bride-to-be is a senior of Kings Mountain Senior High School. The prospective bridegroom is a 1979 graduate of Bessemer City Senior High School and attended Gaston College. He is employed at The Timkins Bearing Company in Lincolnton.

An August 6th wedding is planned at First Baptist Church, Kings Mountain.

### El Bethel Members Join Prayer Movement

Members of El Bethel United Methodist Church in Kings Mountain are participating in the movement to involve one million Christians in offering 200 million prayers of intercession for five million persons over a 40-day period.

The Lenten Prayer and Visitation emphasis is sponsored by the Southeastern Jurisdictional Conference Council on Ministries of the United Methodist Church. It began the first Sunday of Lent (February 20) and will conclude on Easter Sunday, April 3.

Many liturgical denominations ask their members to "give up something" for Lent, the period when Christians remember the sacrifice and death of Jesus. "But United Methodists of the nine Southeastern states are being asked to add something extra in 1983," says El Bethel pastor Sidney Lanier.

There are approximately three million United Methodists in the 17 annual conferences of the nine states in the Southeastern Jurisdiction. Each Sunday morning, more than a million gather

to worship in 13,000 local churches. They are being asked to pray 40 days for five others.

"This is an intensive effort to show that United Methodists care about people and believe that God hears and answers prayer," said Dr. G. Ross Freeman, secretary of the Southeastern Jurisdictional Council on Ministries.

### Sisters Initiated In Sorority

Christine Ann Birkovich and Kimberly Ann Birkovich, daughters of Gregory and Mary Birkovich, were recently initiated by Phi Mu sorority at Appalachian State University in Boone.

As members of Phi Mu, the nation's second oldest college organization for women, they will be able to take advantage of Phi Mu's scholarship programs, chapter leadership positions and the national career development network.

The Appalachian State University chapter of Phi Mu was colonized in October, 1982, after receiving an invitation to do so from the university administration. The Boone chapter joins 122 collegiate and over 200 alumnae Phi Mu chapters nationwide.

Phi Mu has been a consistent leader among national sororities, and was the first to implement a Career Development Department and publish an extensive Professional Directory designed for placement of college seniors as well as alumnae re-entering the work force.

Phi Mu is committed to a philosophy of academic excellence, and personal and social development.

### Thompson To Present Flute Recital

BOILING SPRINGS, NC—Michael Thompson will perform in a senior flute recital at Gardner-Webb College on Thursday, February 24, 1983.

The 8 p.m. recital, open to the public, free of charge, will be held in Dover Chapel on the G-W campus.

Son of Mr. and Mrs. Richard Thompson of State Road, N.C., Thompson will present selections from Gaubert, Telemann, Schumann and Quantz.

Included in the program will be Beverly Badgett on the piano and Rachel Schlafer on the flute performing Suite for Flute and Jazz Piano.

Thompson is a graduate of East Wilkes High School and minister of music at Allen Memorial Baptist Church in Grover, N.C. He is a member of the Music Educators National Conference.

Gardner-Webb is a liberal arts college affiliated with the Baptist State Convention of N.C. offering associate, bachelor and master's degrees. The college is noted for its independence of federal funding.

**SPECIAL Sun-drop PRICE**



Limit 1 Case

**89¢**

**-40¢**

Coupon On Bottle

You Pay

**49¢**

2-LITER ONLY

- Complete Car Service Center
- Open 7 Days
- Recap Tires
- White Kerosene

**PARKER'S AMOCO**

908 Shelby Road

### SLEEP SHOP OF GASTONIA

513 N. BROAD ST. • 864-4387 • MON.-SAT. 9:30-5:30

**WATERBEDS**

Reg. \$218 NOW ONLY

**INVENTORY CLEARANCE**

**BIG SELECTION**

PLUS ALL ACCESSORIES IN STOCK

**\$159**



- KING OR QUEEN SIZE
- PINE STAINED & LACQUERED
- INCLUDES HEADBOARD, DECK, MATTRESS, LINER & HEATER
- NIGHT STANDS AVAILABLE AT EXTRA COST
- 6 DR. PEDESTAL BASE OPTIONAL AT \$69.95

FREE-WATER BED MATTRESS PAD WITH PURCHASE OF ANY WATER BED-WITH THIS AD KING OR QUEEN



OF GASTONIA



**"Can you believe it? I can talk for 15 minutes to Denver for only \$2.72!"**

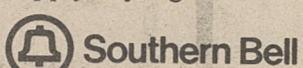


CALL THIS WEEKEND, FROM 11 PM FRIDAY TO 5 PM SUNDAY. 15 minutes from anywhere in North Carolina.

DIALED DIRECT*	tax not included
Boston	\$2.65
Chicago	\$2.65
Denver	\$2.72
Kansas City	\$2.72
Seattle	\$3.04
Los Angeles	\$3.04
New York	\$2.65
New Orleans	\$2.65

**Long distance. You can reach out for a lot less than you think.**

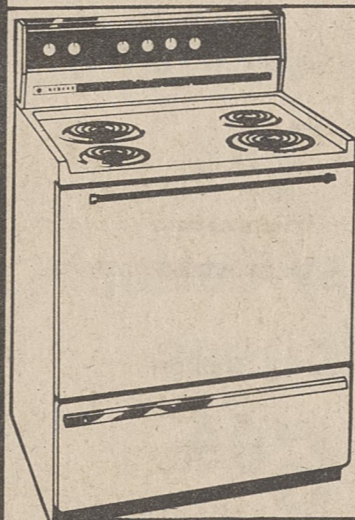
You can reach out with other low rates after 5 PM weekdays. Weekend rates also apply any night between 11 PM and 8 AM.



\*Direct-dial without operator (Dial Station) and billing by time period charges apply on all calls within the U.S. These charges do not apply to person-to-person, coin, hotel-guest, calling card, collect calls, calls charged to another number, or to time and charge calls. Evening rates apply from 5 PM until 11 PM on Sundays. For direct-dial rates to Alaska and Hawaii, check your operator. Rates subject to change without notice.

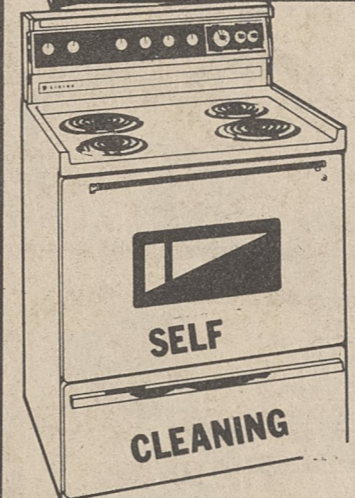


**NOW ONLY! \$555**



**Gibson Electric Range**  
30" Wide Plug-In Type Burners  
With Lift Up Top For Easy Cleaning

**NOW ONLY \$329 W/T**



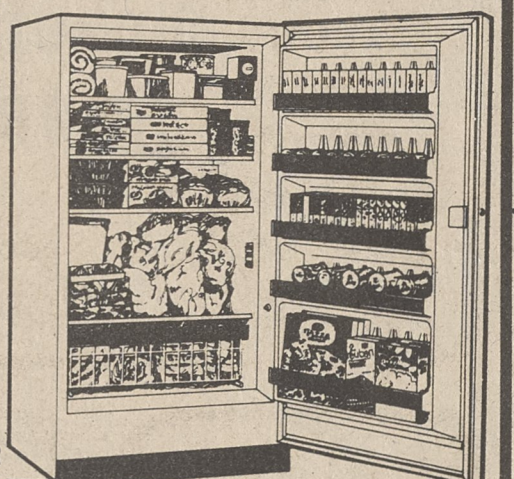
**GIBSON - CE-3054 ELECTRIC RANGE**  
Removable Door Plug-In Type Surface Units



**GIBSON COMPACT FREEZER**

Credit Terms Available With Approved Credit

**Gibson APPLIANCES THEY LAST**



**FV-16M<sup>2</sup> Full Width Fast Freezing Shelves**  
Pop-Out Key Safety Lock  
Food Protection Plan  
**GIBSON - 16.0 Cu. Ft. UPRIGHT FREEZER**

**TIMMS Furniture**

909 Grover Rd.  
Kings Mtn., N.C. 28086  
Phone 739-7661