



HISTORY MAKING SALE!

ROGERS IS HAVING THE MOST DARING, EXCITING, COST CUTTING SALE THIS AREA HAS EVER SEEN!! YEARS FROM NOW, YOU'LL REMEMBER HOW LITTLE YOU PAID FOR A NEW CAR AT ROGERS IN MAY OF 1985.



"ONLY AT ROGERS!"

GEORGE WASHINGTON . . . "I CANNOT TELL A LIE"!!!

LEASE ZERO

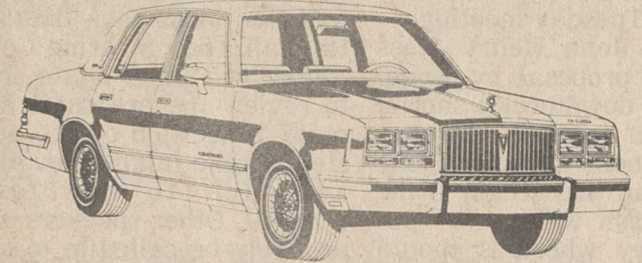
- CASH DOWN
- SECURITY DEPOSIT
- FIRST PAYMENT



1985 6000 SEDAN
STOCK # P-322
LIST PRICE \$11,968⁰⁰

\$214⁹¹!

"ONLY AT ROGERS!"



1985 BONNEVILLE SEDAN
STOCK # P-371
LIST PRICE \$12,599⁰⁰

\$231³⁶!

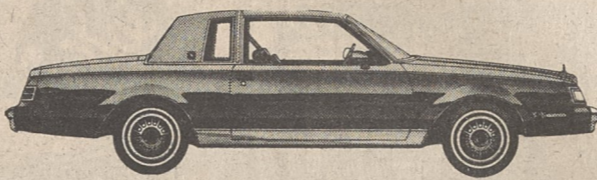
"ONLY AT ROGERS!"



1985 SKYLARK LIMITED
STOCK # B-530
LIST PRICE \$11,219⁰⁰

\$203¹⁵!

"ONLY AT ROGERS!"

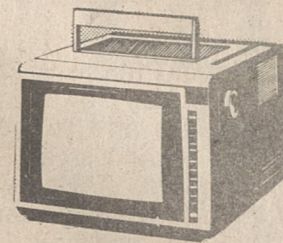


1985 BUICK REGAL LTD
STOCK # B-595
LIST PRICE \$14,599⁰⁰

\$256⁶³!

"ONLY AT ROGERS!"

FREE TV*



12" EMERSON TELEVISION
SIMILAR TO ILLUSTRATION

Only at Rogers
WITH PURCHASE OF ANY NEW CAR FROM ROGERS!

PURCHASE

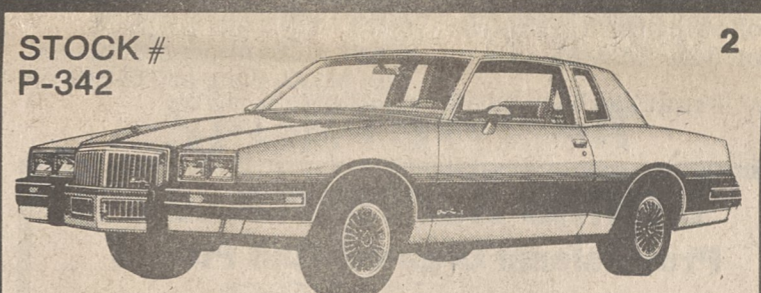
- 60 MONTH FINANCING
- ONLY \$588⁸⁸ CASH DOWN!
- NO PAYMENTS TIL JUNE 25, 1985



LIST PRICE \$13,662.00

\$1885⁰⁰ DISCOUNT

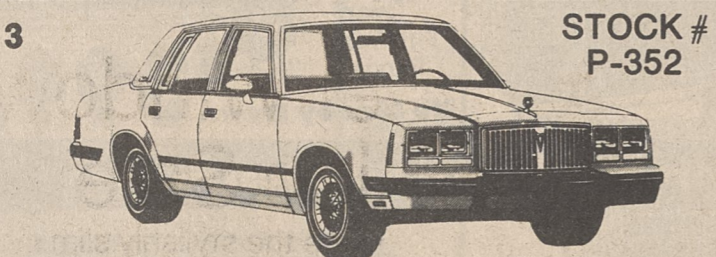
1985 '6000' SEDAN **/\$269⁹¹* PER MONTH**



LIST PRICE \$14,301.00

\$2001⁰⁰ DISCOUNT

1985 GRAND PRIX LE **/\$287⁸⁵* PER MONTH**



LIST PRICE \$14,195.00

\$1895⁰⁰ DISCOUNT

1985 BONNEVILLE 4-DOOR **/\$286²⁰* PER MONTH**



LIST PRICE \$13,726.00

\$1726⁰⁰ DISCOUNT

1985 CENTURY LIMITED SEDAN **/\$279²²* PER MONTH**

ROGERS SIMPLY THE BEST!

THESE PAYMENTS ARE BASED ON A 48 MONTH CLOSED-END LEASE. CUSTOMER HAS OPTION TO PURCHASE AT END OF LEASE AND MILEAGE IS BASED ON 18,000 MILES PER YEAR. APPROVAL REQUIRED BY GMAC DIRECT LEASING.

ROGERS

"WE RUN A VERY SIMPLE BUSINESS"
PONTIAC • CADILLAC • BUICK

1208 WEST DIXON BLVD. • SHELBY, N.C. • PHONE 487-6364
CHARLOTTE PHONE: 334-2633

* THESE PAYMENTS ARE BASED ON 60 MO. FINANCING, O.A.C.I VARIABLE APR OF 14 WITH \$588.88 DOWN CASH OR TRADE. DOES NOT INCLUDE T.T.L OR FEES.

1-T.O.P. 16194.60
2-T.O.P. 17271.00
3-T.O.P. 17172.00
4-T.O.P. 16753.20