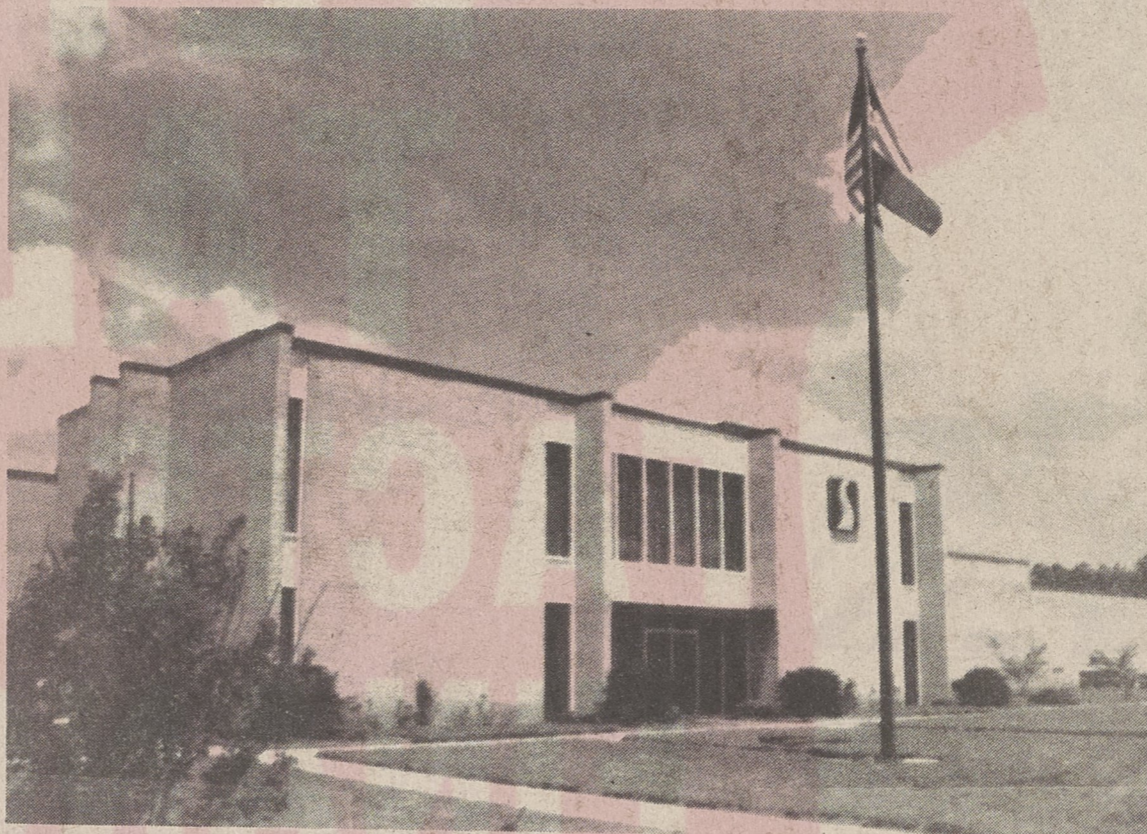




Spectrum Dyed Yarns, Inc.



...for all your package-dyed yarn needs.

P.O. BOX 509 • KINGS MOUNTAIN, N.C. 28086  
TELEPHONE: 704-739-7401

1450 BROADWAY • NEW YORK, N.Y. 10018  
TEL. 212-391-8181 • TELEX: RCA 220 855 (SPEC UR)

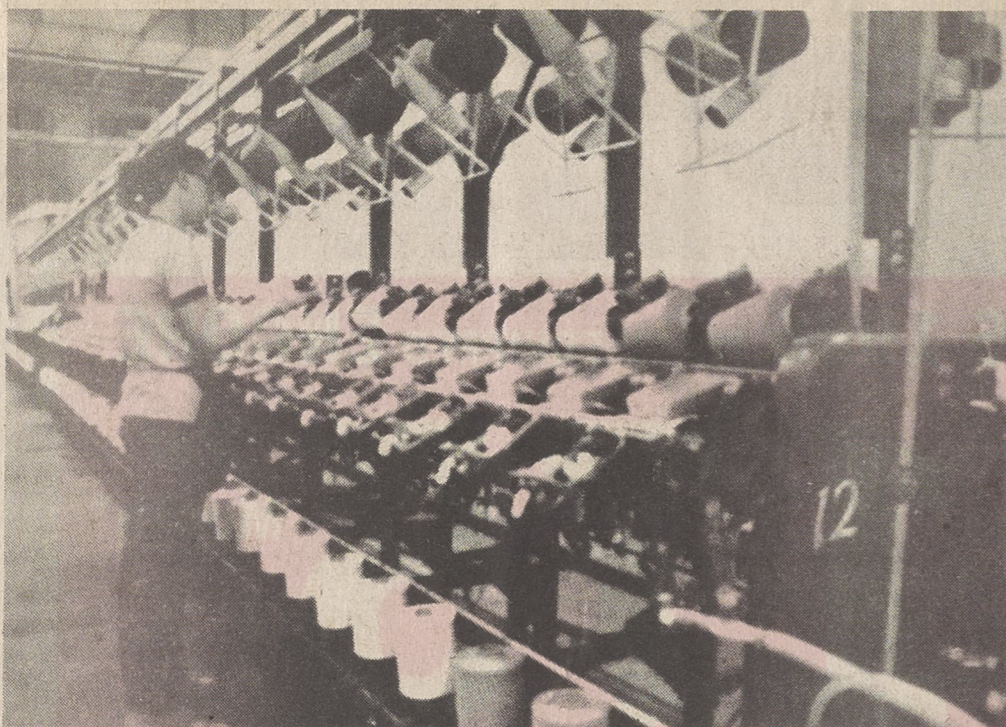
**SPECTRUM TODAY.....**

Spectrum Dyed Yarns, Inc. today is a diversified package-dyer serving the knitting and weaving industries. One of the largest independent package dyers in this country. The company's yarn-dyeing facility is located in Kings Mountain, N.C. thirty miles west of Charlotte, N.C. off Interstate 85.

Our 185M square feet plant is located on a tract of thirty-seven acres. Spectrum employs in excess of 300 people operating three shifts, twenty-four hours a day. Spectrums' yarn dye plant produces 450-500M lbs. per week depending on product mix. High-pressure Gaston County package dye equipment with automatic controllers is utilized in the yarn dyeing operations.

Foster 102 winders are utilized in the winding of spun yarns. Jumbo-size Schweiter winders are utilized in the winding of filament yarns. A 2.5 pound knotless cone on spun yarns and a 3.5 pound knotless cone on filament yarns.

Our color matching laboratory utilizes an Applied Color Systems, Inc. ACS-4000 color control computer for the initial determination of the required color formula. Our lab has thirteen sample machines, an Ahiba all-purpose lab machine and two laundrometers—all operating 24 hours a day with a full staff of trained technicians in attendance at all times. Production dyeing is automatically controlled for maximum quality and efficiency.



UTILIZED MANAGEMENT INFORMATION

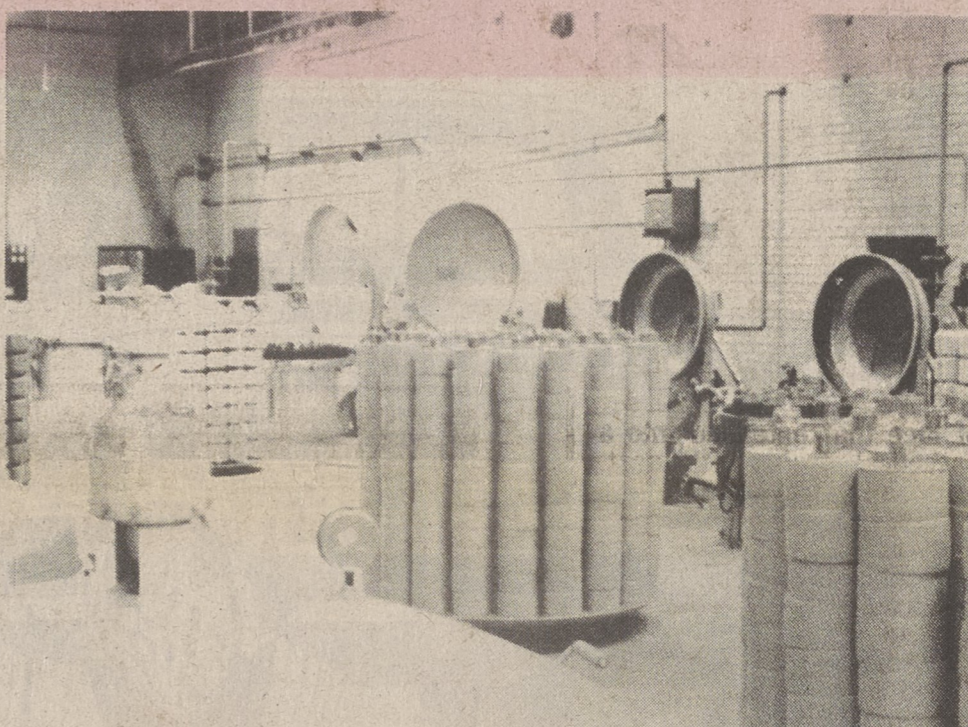


JUMBO-SIZE SCHWEITER WINDERS FOR FILAMENT YARNS

Thorough color testing is conducted in a complete Quality Control Center. The exact standards as determined by customer end-use requirements are measured and adhered to every dye lot prior to shipping. color fastness, wash fastness, bulk-level..whatever. Exact specifications rigidly met. Production flow is controlled and monitored by a complete computerized program on Data General Nova and Eclipse hardware assuring on-time delivery.

Sales Offices are located at 1450 Broadway, N.Y., N.Y. and in Kings Mountain, N.C. A full staff of sales and customer service personnel are available at all times. At both locations we have the finest color libraries available anywhere in the textile industry—10,000 colors...if you can't find the color you want, we will forward it to the lab for immediate matching.

This is Spectrum Today...a diversified and dependable quality resource for all your yarn dye needs.



GASTON COUNTY HIGH PRESSURE PACKAGE DYE MACHINES WITH AUTOMATIC CONTROLLERS



COLOR MATCHING LABORATORY



**YOU BUY IT, WE'LL DYE IT!  
SPECTRUM TODAY...AND TOMORROW, TOO.**