

The Sounds Of Christmas Set At Shelby Auditorium

Once again the Merchants Association of Greater Shelby and Cleveland County is underwriting the tickets for "The Sounds of Christmas," presented by the Cleveland County Choral Society at Brown Auditorium, Shelby, N.C., on December 7, 1985 at 8 p.m. and on December 8, 1985 at 3:00 p.m.

Tickets at the door will be \$3.00, but tickets are free from participating merchants, including Wray's; Hudson's; Arnold's Jewelers; Lowery's Limited; Badcock Furniture; Noell Travel

Center; Horn, Story & Williams; Dicey Fabrics; H & H Pest Control; Imperial Insurance; Curtis-Mathes; WCSL-AM; WXIK-FM; and the Shelby Shopper.

Dr. Russell Patterson of Limestone College will be directing a program of Christmas classics and popular music presented by over 100 singers from Cleveland County. Some of the singers will be strolling through the downtown area on Saturday, November 23rd and Saturday, November 30th singing Christmas

carols. Some of the singers will also perform at the preview party for the Festival of Trees presented by Hospice of Cleveland County at Hotel Charles November 30th thru December 4th. The regular Christmas concert will be Saturday night and Sunday afternoon of December 7th and 8th.

The Cleveland County Choral Society is a non-profit corporation that presents two choral concerts a year, at Christmas and in the spring. It is sponsored by its local

patrons and members, by the Shelby Community Schools Program, by the Grassroots program of the North Carolina Arts Council, by local industries, and by the Merchants Association of Greater Shelby and Cleveland County. Anyone who lives in Cleveland County can sing with the group and no auditions are required.

Several of the singers are from Kings Mountain, including Robert Bradley, Broadus Elam and Andrew Neisler Jr.

WCU Is Accepting Scholarship Applications

Western Carolina University is accepting applications for academic scholarships for the 1986-87 academic year.

The scholarships recognize exceptional academic achievement among secondary school and two-year college students.

The awards range from \$500 to \$1,000 for one year. Some scholarship awards may be renewed after the first year on the basis of scholastic achievement. Scholarship recipients may receive a maximum of \$4,000 over four years.

Applications for admission to Western Carolina and the

scholarship application must be filed with the Admissions Office by Feb. 3, 1986.

Scholarship recipients will be announced March 15, 1986, and students must notify WCU by April 2, 1986, whether they accept the scholarship.

Additional information about WCU's Scholarship Competition as well as application forms may be obtained by contacting Drumont Bowman, director of admissions, Western Carolina University, Cullowhee, N.C. 28723, telephone (704) 227-7317, by Jan. 3, 1986.

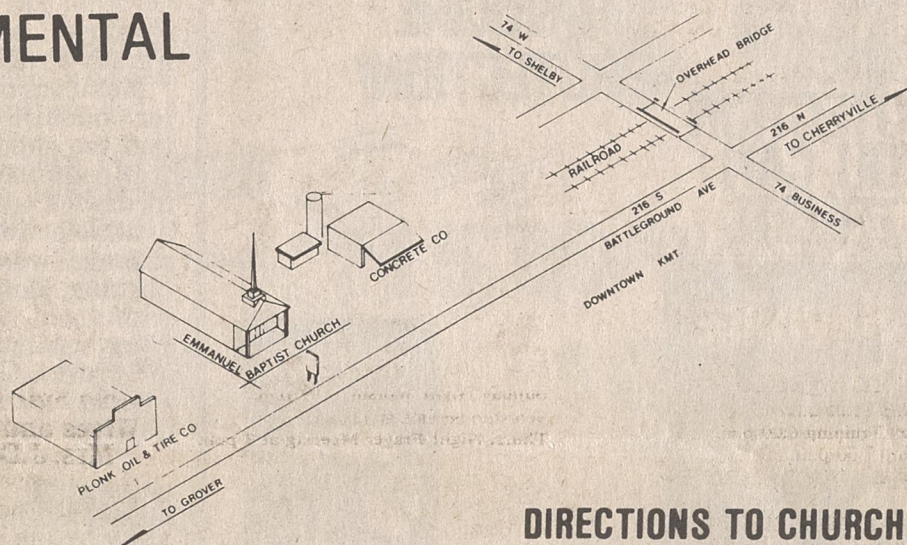
2ND ANNIVERSARY REVIVAL

EMMANUEL BAPTIST CHURCH

INDEPENDENT — FUNDAMENTAL



PASTOR WAYNE REESE WELCOMES YOU TO ATTEND OUR REVIVAL SERVICES



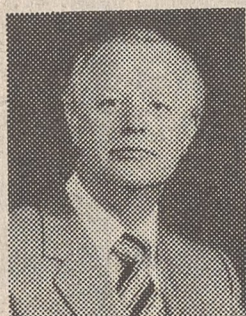
DIRECTIONS TO CHURCH

DEC. 4TH — 8TH AT 7:00 P.M. EACH SERVICE

* SPECIAL GUEST SPEAKERS *



- Lewis Batchlor
- Pastor Hilltop Baptist, West Virginia
- Speaking Wed. & Thurs.



- Dr. Joe Myers
- Pastor Kerwin Baptist Church, Kernersville, N.C.
- Speaking Saturday



- Dr. Jack Hudson
- Pastor Northside Baptist, Charlotte, NC, for 33 years
- Speaking Friday



- Gwyn Johnson
- Evangelist, Bessemer City, NC
- Speaking Sunday Morning, Followed with Fellowship Dinner

* BUS SERVICE AVAILABLE — CALL (704) 739-6348 *

* NURSERY PROVIDED FOR EACH SERVICE *

EMMANUEL BAPTIST CHURCH

— HOME OF —

Emmanuel Christian Academy
900 Grover Road, P.O. Box 281
Kings Mountain, N.C. — Phone: (704) 739-9339