

Cramer Mountain Golf Course To Open Today

Cramer Mountain Country Club and Properties, Inc.'s 18-hole golf course will officially open on Wednesday, September 10 at 8:45 a.m. when William A. Klopman, Chairman and Chief Executive Officer of Burlington Industries, tees off on the 1st hole.

The course, a par 71, was designed by nationally known golf course architect, Dan Maples of Pinehurst, North Carolina. Cramer Mountain Country Club's course is 6,750 yards in length for championship play; membership length is 6,300 yards. Construction of the course took twenty-six (26) months to complete and cost approximately \$2,500,000.

Uniquely designed to complement Cramer Mountain's rolling, wooded terrain, several holes were actually constructed out of the two mountains located on the residential community's 750 acres of land.

"Much care was given in designing the course as we wanted it to be harmonious with the natural beauty of Cramer Mountain. An excellent example of the course's unique blending is on the 15th hole as the green is completely surrounded on three sides by a 50 foot wall of

Winston Race Set At Charlotte

Harrisburg, N.C. - "Now, May is truly the World Series month for auto racing," said Charlotte Motor Speedway Chairman of the Board Bruton Smith.

Smith was commenting after the Thursday announcement that "The Winston" NASCAR all-star race, and a companion event - "The Winston Open" - would be held at Charlotte Motor Speedway on May 17, 1987, one week before the Coca-Cola 600.

"Having the event here gives us the opportunity to showcase Winston Cup racing to the nation during the month of May, when enthusiasm for auto racing in the United States is at its peak," he said.

Format for the two-year-old event has changed. A minimum of 20 drivers will start "The Winston." Total purse has been increased to \$600,000, up \$100,000 over 1985, with the winner's share at \$200,000.

The 150-mile companion event - "The Winston Open" - will start 30 cars. Total purse will be \$200,000, with the winner getting \$30,000 and an invitation to start in "The Winston" all-star race. Any driver who has entered and attempted to qualify for a Winston Cup race during the 1986 season and by May 3, 1987, will be eligible for entry.

Final details for "The Winston" and "The Winston Open" will be announced prior to the 1987 Winston Cup season.

Charlotte Motor Speedway was at the site of the inaugural "The Winston" in 1985. The 1986 event was held at Atlanta International Raceway.

"We appreciate the tremendous amount of work that NASCAR did in juggling the schedule to make this event possible," said Smith.

"Also a big thanks to Dover Downs International Speedway for moving their Budweiser 500 from the weekend before the Coca-Cola 600 to the weekend after.

"Besides the drivers and the fans, big winners in this event will also be the City of Charlotte, which should gross \$16 million in additional tourist revenue because of the second big weekend of racing.

"We're looking forward to working with NASCAR and R.J. Reynolds in coming up with an innovative format for "The Winston," said Smith. "Our goal is to make 'The Winston' to auto racing what 'The Masters' is to golf."

rock. We actually built the green out of the side of the mountain!" exclaimed Graham Bell, president of Cramer Mountain Country Club & Properties, Inc.

Cramer Mountain's golf pro, Jimmy Franklin, will oversee all of the golf course's programming. Plans include golf lessons, local and regional tournaments, and in a few years, professional tournaments. Assisting Franklin will be David Brown, who recently joined Cramer Mountain Country Club from Mooresville Country Club, where he had been the club's assistant golf pro and head teaching professional.

Cramer Mountain Country Club's golf shop is located in the club house which opened in May. The \$3 million, 34,000 square-foot facility features a 300 seat ballroom, a 175 seat dining room, a grille room,

cocktail lounge and executive meeting rooms and entertainment areas. A swimming pool, tennis courts and recreation building are currently under construction.

"We are proud of the facilities Cramer Mountain Country Club has to offer. Our new golf course will challenge the most experienced golfers, yet be enjoyed by all skill levels. Our facilities are first class and our staff members are the best in their fields. I'd compare Cramer Mountain Country Club to any golf course facility in the Southwest," stated Graham Bell.

Cramer Mountain Country Club & Properties, Inc. is being developed by E. Graham & Gayle Bell and Burlington Industries, Inc. It is located in Gaston County on the South Fork of the Catawba River and is only 20 minutes from downtown Charlotte.



About 16,000 icebergs form annually in the Arctic.

METROLINA MATTRESS AND WATERBED OUTLET

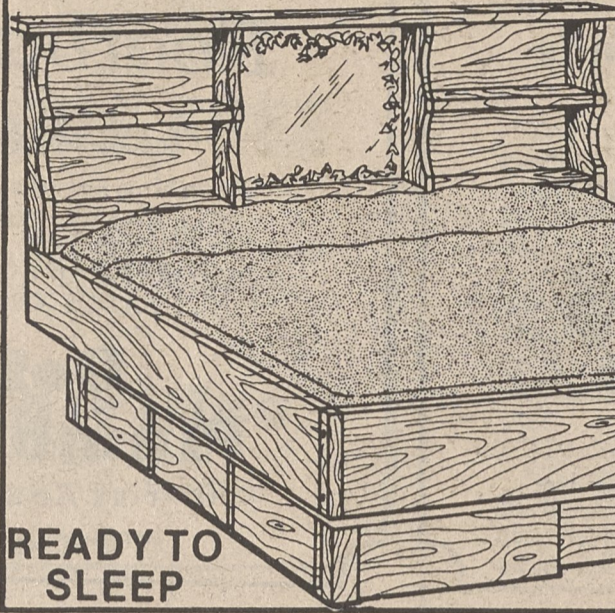
501 E. FRANKLIN BLVD. PHONE: 866-4975 TERMS/DELIVERY (Formerly Leonard Short) Mon.-Fri. 10-5:30 Sat. 9:30-5:30

SUPER HOLIDAY SALE: WHILE THEY LAST SAVE UP TO 60% SINGLE-QUEEN-KING

lowest Price Ever
Special Factory Purchase

SAVE \$188

SAVE *230



SUPER EXTRA SPECIAL
4 Drawer Chest Pine Finish Save \$30 \$39 SALE

- Headboard
- Bookcase
- Frame
- Mattress
- Heater
- Pedestal
- Decking
- Fill Kit
- Liner
- Chemicals

READY TO SLEEP

SAVE on Quaker State® MOTOR OIL



Plus,

get back another refund certificate and SAVE an extra \$2.40!

5 Qts. only \$4.95 less Mfr. rebate - \$1.00 \$3.95 your cost

12 Qts. only \$11.88 less Mfr. rebate - \$2.40 \$9.48 your cost

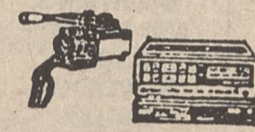
Prices Good Thru Sept. 13th

KINGS MOUNTAIN AUTO SUPPLY
904 W. Gold St. (Across From Armory)
Kings Mountain, N.C. Phone 739-0391

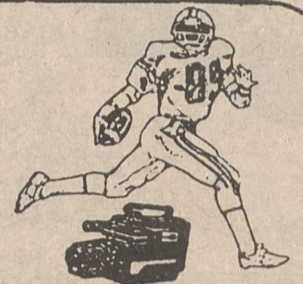
CATCH ALL THE ACTION



NEW! '87 MODEL VCR's FROM \$17.70 mo.* Includes Free Membership



PORTABLE VCR & CAMERAS Save Up To \$1000* (*off suggested retail)



VHS CAMCORDERS FROM \$1188 Only \$45.27 mo.* Includes Cases & Tape Club Membership

EASY FINANCING* NO MONEY DOWN* (No payments until October)* with approved credit

VIDEO WORLD

"The Video Specialists"

867-2658

307 S. Broad St., Gastonia, NC

SHELBY MARINE IS ON THE MOVE!

—Sale Place At Our Present Location—

THE MOVING SALE...1090 DAVIS ROAD 487-9751

Take Highway 18 South In Shelby, Then Left On Davis Road. Shelby Marine Don't Want To Move 'Em, So They Gotta Sell 'Em.

We must liquidate all stock at our present location...everything must go! Prices have been slashed on every boat, every motor, all equipment, all accessories...Everything in stock has been Reduced...Many items to cost and below!

NEW COBIA BOATS...

Three To Sell At Cost!

1984 STARLINE
15 Ft. With 50 HP
Trim Tilt - Was \$6995
NOW \$4995⁰⁰

1983 HYDRA SPORTS CENTER CONSOLE
18 Ft. With 140 HP
Was \$9395.00
NOW \$7295⁰⁰

1981 HUTCHINS 16 FT. COMPACT YACHT, SAIL BOAT, TRAILER,
Complete Outfit In Great Condition. Was \$3995.00
NOW \$2995⁰⁰

1977 BROWNING 120 HP MERCURISER
Trailer Included. Was \$4995.00
NOW \$3295⁰⁰

1979 PRO CRAFT 70 HP MERCURY BASS BOAT
With Trailer - Was \$5295.00
NOW \$4295⁰⁰

1982 HYDRA SPORTS, 15 FT. BASS BOAT 85 HP MERCURY
Loaded With Accessories. Was \$6,995.00
NOW \$5295⁰⁰

ALL NEW HYDRA SPORTS BASS BOATS TO BE SOLD AT COST

Sale Ends September 30th

1976 STRYKER WITH 85 HP JOHNSON
Was \$4995.00 NOW \$3495⁰⁰

Don't Miss Out!

Shelby Marine Will Be Moving To 1512 East Dixon Blvd., Shelby In The Former Location Of Short's Boats & Motor Building

