

PLONK TIRE COMPANY

227 S. Cherokee Street - Downtown Kings Mountain (In The Former Winn Dixie Building)

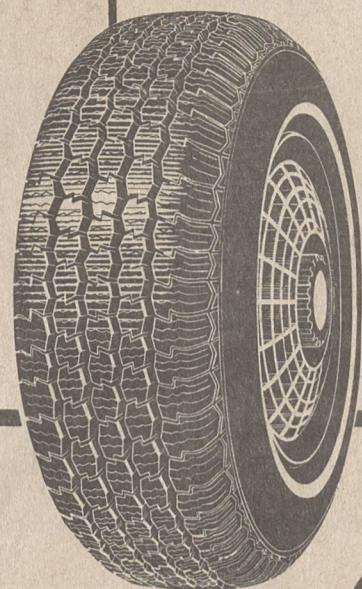
WRAY PLONK AND DAVID PLONK

PHONE 739-0193

Hours: 7:00 A.M.-7:00 P.M. - Monday Thru Saturday



Buckle Up For Safety!



BECAUSE YOU CARE.

When you buy a set of tires, it's not for your car. It's for the precious cargo you carry.

That's why Michelin makes only quality radials.

And we make them affordable for you.



MICHELIN[®]
BECAUSE SO MUCH IS RIDING ON YOUR TIRES.

PASSENGER

MICHELIN XA4

A FRIEND, COME RAIN OR SHINE. OR SNOW.

- Long-lasting all-season tire — up to 60,000 miles (with proper care).
- Clings to wet roads.
- Plows through snow.
- Handles precisely, accurately.

AT **PLONK TIRE**
Kings Mountain, N.C.



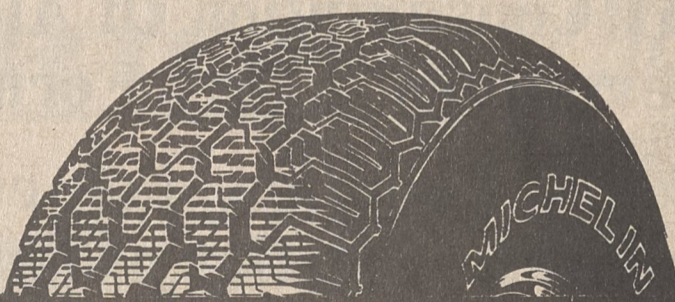
LIGHT TRUCK

MICHELIN XCH4

IMPRESSIVE GROUNDWORK FOR TRUCKS, VANS AND RV'S.

- All-season radial for light trucks, standard and mini-vans, and RV's.
- Sporty look of raised outline white letter styling.
- High mileage plus a low noise level.
- Superb traction on highways, in snow and for recreational travel.

AT **PLONK TIRE**
Kings Mountain, N.C.



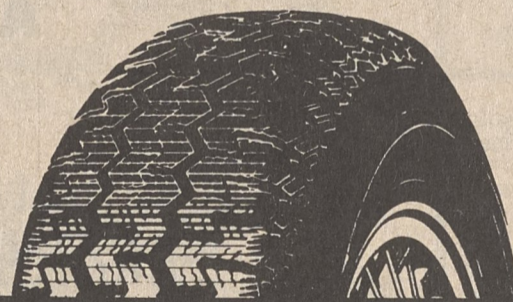
PASSENGER

MICHELIN XZX

THE RADIAL WITH A EUROPEAN ACCENT.

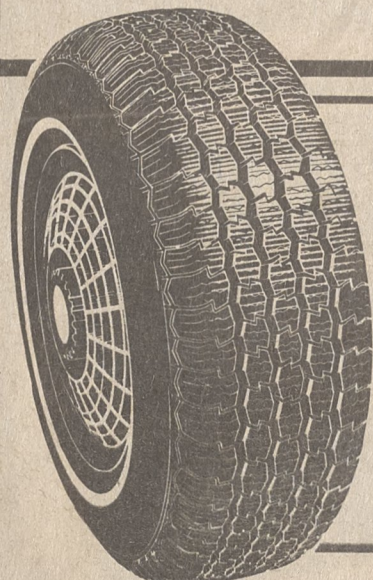
- The perfect complement to imports and small American cars.
- European tread design to enhance overall performance.
- Outstanding fuel economy.
- Excellent wet and dry traction.

AT **PLONK TIRE**
Kings Mountain, N.C.



GOOD DEPENDABLE SERVICE
Have Your Tires Mounted, Trued And Balanced
WHILE YOU WAIT

DID YOU KNOW?
THAT FOR YEARS PEOPLE FROM MILES AROUND HAVE
BEEN BUYING THEIR TIRES FROM
PLONK TIRES



PLONK TIRE COMPANY

227 S. Cherokee Street - Downtown Kings Mountain (In The Former Winn Dixie Building)

WRAY PLONK AND DAVID PLONK

PHONE 739-0193

Hours: 7:00 A.M.-7:00 P.M. - Monday Thru Saturday



Buckle Up For Safety!