

Man Dies In Eaton Explosion

Orlin Cleo Smith, 35, of Polkville Road, Shelby, was killed Monday afternoon when an oil tank at Eaton Corporation exploded.

Smith worked for Sanders Brothers Construction which had been contracted by Eaton to relocate some above-ground oil tanks and redesign a waste treatment system. Workmen were in the process of relocating a tank when the top was blown off. Smith was on top of the tank.

The incident occurred just after noon to the side of the back of the building.

Eaton's safety director and insurance personnel are investigating the incident.

A native of Delta, Colo., he was married to Wanda Wray Smith and he was the son of Orley Cleo and Effie Mae Louisma Smith of Powersville, Mo. Also surviving are a son, Joshua Lynn Smith of the home; a daughter, Candie Nicole Smith of the home; three brothers, Doyle Smith of Cainsville, Mo., Floyd Dean Smith of Waco, and David Allen Smith of Lineville, Iowa and eight sisters, Wilma Frisbie of Mount Moriah, Mo., Mary Lou Payton of Brandon, Fla., Jo Ann Sanders of Montrose, Colo., Jean Smith Cook of Trona, Calif., Joyce Allen Miller of Sacramento, Calif., Marilyn Miller of Milan, Mo., Carol Birner of Humeston, Iowa and Pam Bledsoe of Waco.

Funeral services will be conducted Thursday morning at 11 a.m. from Cherokee Street Baptist Church in Kings Mountain by Rev. George Leigh, Rev. Broadus Heatherly and Rev. Robert Jenkins, interment following in Shelby's Sunset Cemetery.

Homecoming Saturday At G-Webb

Boiling Springs... Members of the class of '37 will be having their 50th reunion. Other classes having reunions are '42, '47, '52, '57, '62, '67, '72, '77, '82, '86 and '87. All alumni are invited to attend the "Who Says You Can't Go Home Again?" homecoming activities on Saturday, October 10.

Homecoming festivities begin Saturday morning with registration from 9 a.m. until noon in the Dover Chapel. There will be Alumni Breakfast in the C.I.D. Cafeteria from 9 - 11 a.m.

The Alumni Tennis Tournament will begin at 9 a.m. at the J.L. Suttle, Jr. Tennis Courts. The Alumni Baseball Game will begin at 10 a.m., and the Women's Alumni Basketball Game will begin at 10 a.m. in the Paul Porter Arena.

At noon, the Alumni Picnic will begin at the stables on Stadium Drive.

The Homecoming Parade will begin at 1:15 p.m. on Main Street in Boiling Springs and will be followed by Gardner-Webb's football game at 2 p.m. in Spangler Stadium with the Bears of Lenoir-Rhyne College.

The Men's Alumni Basketball Game will scrimmage at 4 p.m. in the Paul Porter Arena.

The Alumni Awards Banquet will begin at 6:30 p.m. in the C.I.D. Cafeteria. Special guest speaker will be The Honorable Judge Marvin Wooten, U.S. Bankruptcy Court of Charlotte.

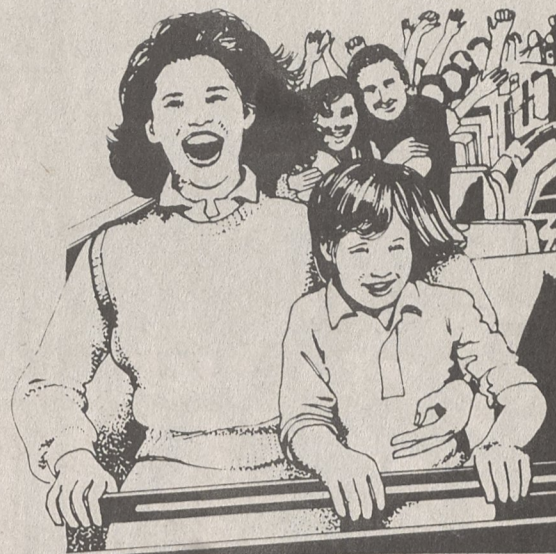
Tickets to breakfast, lunch, dinner and game may be purchased at registration in Dover Chapel from 9 a.m. until noon. Game tickets may also be purchased at the gate.

The campus shop will be open from 10 a.m. until 4 p.m.

Belk Stevens

CLEVELAND MALL

FAIR DAY SPECIALS



**28.50-
32.25**

**Coca-Cola
Sportswear**

One group of rugbys, fleece sweat shirts and pants.

Reg. 38.00-43.00

**12.00-
18.00**

**Russell
Fleece**

Heavyweight, polyester and cotton. Assorted fashion colors.

Reg. 16.00-24.00

15.99

**Junior
Red Camel**

Long sleeve cotton shirts in stripes with epaulets on shoulders. Assorted brights.

Reg. 21.00

23.99

**Heartland
Novelty
Fleece**

Tops, Pullover, Johnny collar. Assorted pastels. Juniors.

Reg. 30.00



24.00-41.25

Greenline Sportswear

Includes sweatshirts and long sleeve rugby shirts in updated styling.

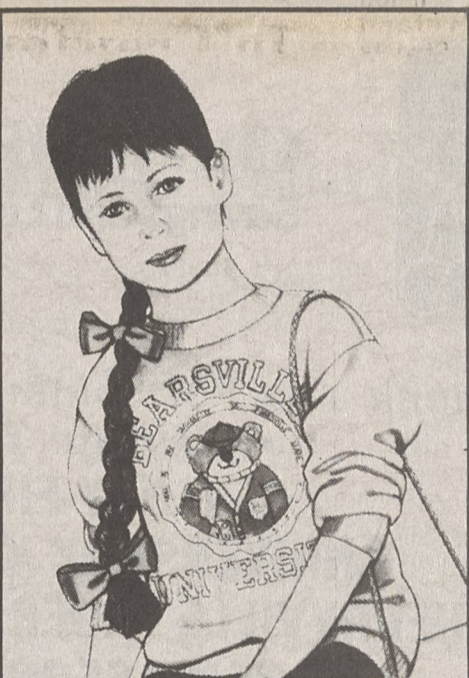
Reg. 32.60-55.00

19.99

Missy Novelty Sweaters

Pullover, button placket. Long sleeve. Assorted colors.

Reg. 24.99

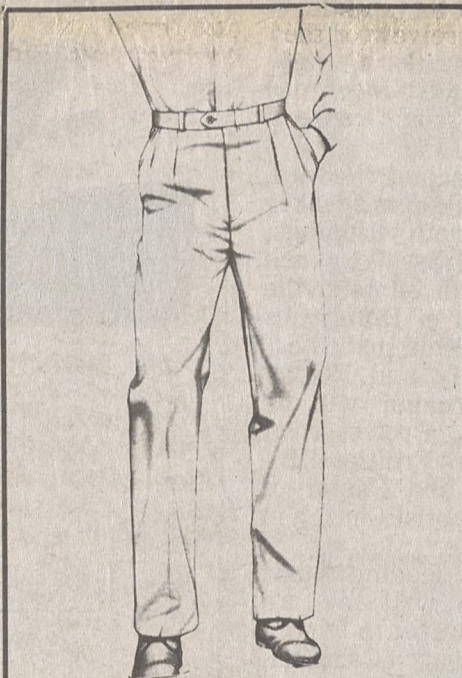


13.99

Girls 4 to 6x

Fleece joy sets by Healthtex.

Reg. 19.00



22.50 to 24.00

Levi Dockers

100% cotton slacks, pleated front, soft construction model.

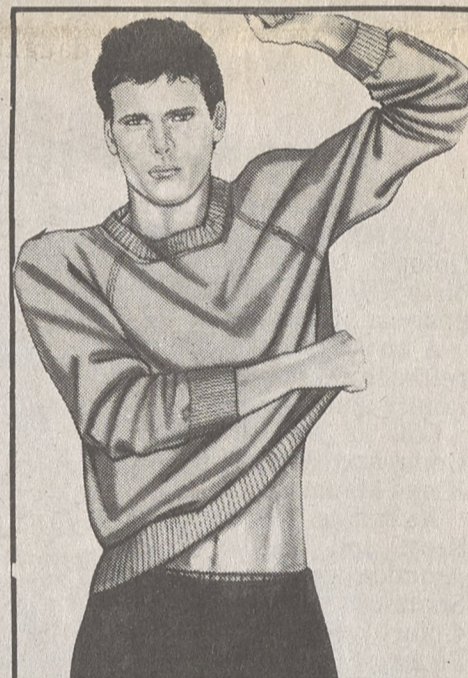
Reg. 30.00-32.00



13.88 and 15.99

Lee and Levi Jeans

Basic 5-pocket stonewashed jeans. Sizes 8-14 and student.

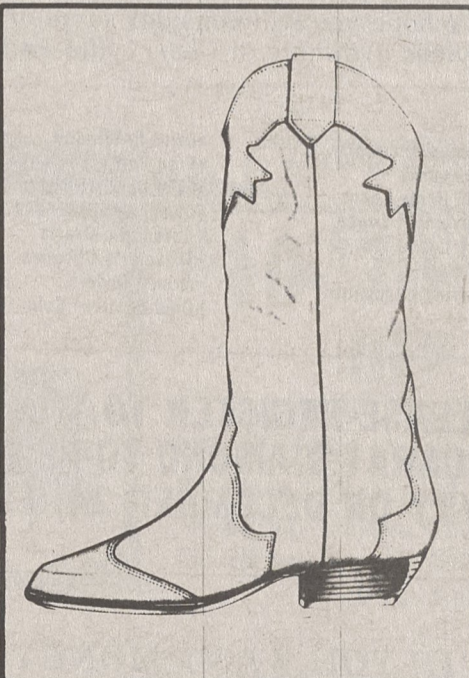


5.99

Players Club Sweats

Pants and crew neck shirts. Navy, gray, black, red and royal. Boys sizes 8-20.

Reg. 8.00



20% OFF

Dingo Boots

Four ladies styles and five mens styles. Choose from this selection of fashionable boots for fall.

Reg. 63.00-75.00



8.00

**Saddlebred
Mufflers**

Solid acrylic mufflers. 12" x 55" with rope fringe. Reg. 12.00



18.99

Missy Sweaters

Sweetbriar long sleeve pullover. Assorted solid colors. S-M-L.

Reg. 24.00



5.99

Girls 7 to 14

Pastel fleece by Pannill. Crew neck shirts. Pull-on pants.

Reg. 8.00 and 8.50



Pasta comes in more than 100 shapes and sizes.