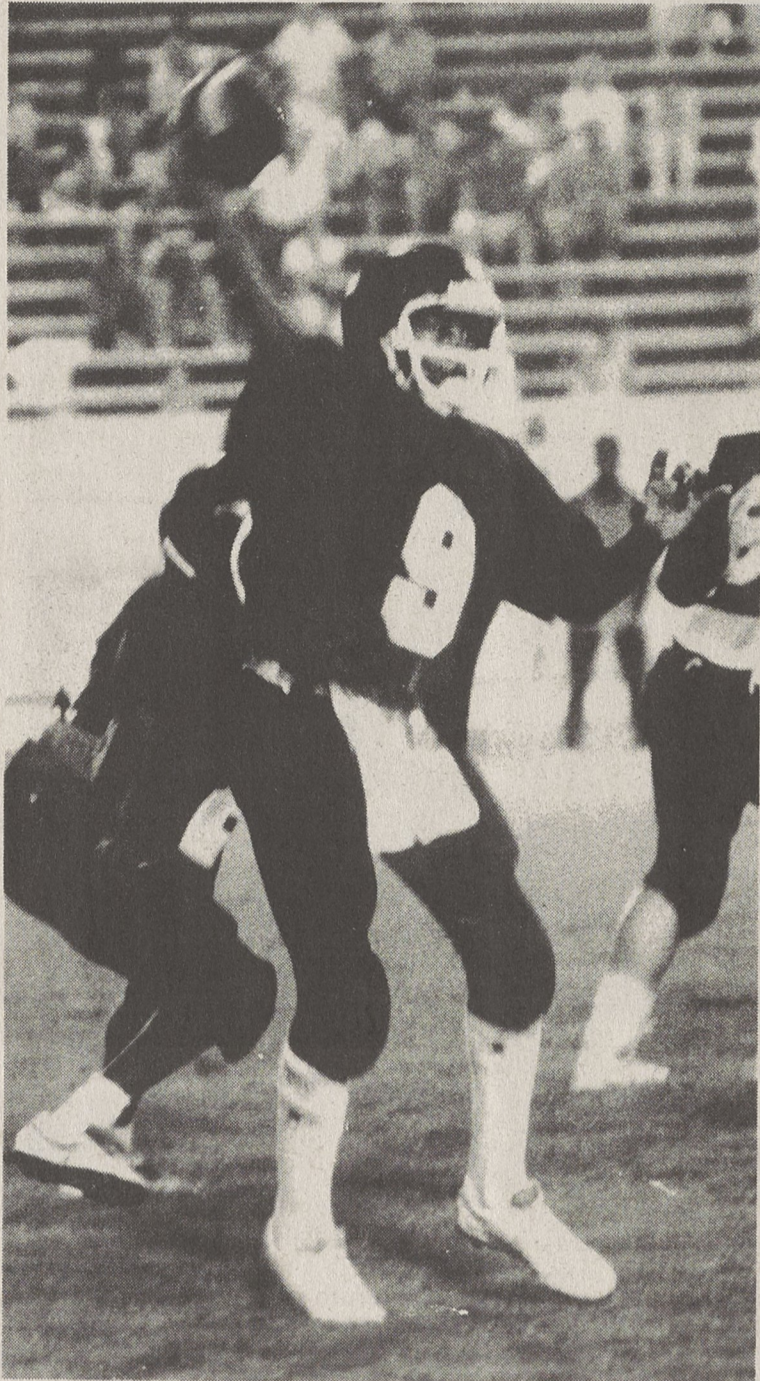


Jayvees Edge East 7-6 Finish With 3-6 Record



THROWS TD PASS - Timmy McClain (9) threw a touchdown pass to Jon Reid and Kevin Moss added the point-after touchdown from placement Thursday night as Kings Mountain High's jayvee footballers edged East Rutherford 7-6 in the season's final game in Forest City. KM finished with a 3-6 record.

Kevin Moss's PAT from placement was the difference Thursday night as Kings Mountain High's junior varsity footballers edged East Rutherford 7-6 in the final game of the 1987 season.

Coach Paul Bolt's Mountaineers finished the year with back-to-back victories over Bessemer City and East Rutherford to finish with a 3-6 record.

East Rutherford scored first early in the opening quarter but failed on a two-point conversion attempt. Kings Mountain countered later in the first half on a six-yard touchdown pass from Timmy McClain to Jon Reid. Moss then split the uprights to give the Mountaineers the victory.

Kings Mountain threatened again in the third quarter after Marlo Smith recovered an East Rutherford fumble. The Mountaineers drove to the East two but lost the ball on downs.

Coach Bolt, whose team was comprised of freshmen and sophomores who competed mostly against sophomores and juniors from other schools, cited his entire sophomore class for its offensive and defensive efforts in the season-ending contest. Those players include Daniel Honeycutt, Scott Belcher, Conington Whitener, Keith Brown, Reggie Gamble, Steve Robbins, Brandon Morgan, Chip Parker, Paul Brannon, Lee McDaniel, Reggie Moss, Petie McNeal, Marcus Brooks, Eric Peppard, Jon Reid and Chris Putnam.

SHELBY Mazda

Hwy. 74 East (Bypass) Shelby, N.C.

"INFLATION BEATER"



Stock No. I-064

Sharpest Pencil Around

1988 MODELS / B-2200 TRUCKS

\$138⁵⁵ Per Mo.

Based on \$7300.00 selling price. Cash or trade \$1,000.00. Finance charge of \$2,013.00 @ 11 1/2% on 60 mo. Total of payments \$8313.00. Upon approved credit. NC sales tax, title & license excluded.

Hurry While They Last

BEAT

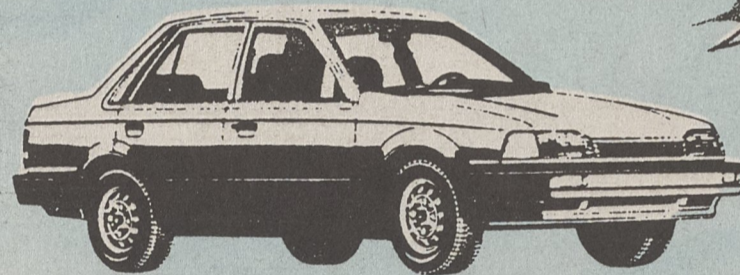
INFLATION

ALL NEW MAZDA'S HAVE 3 YEAR 50,000 MILE BUMPER TO BUMPER WARRANTY

MAZDA 323

4 Dr., Auto, Air.

Huge Savings On All Other New & Used Cars



Stock No. I-013.

\$164⁹⁴ Per Mo.

Based on \$8500.00 selling price. Cash or trade in of \$1,000. Finance charge \$2396.40 at 11.5% APR on 60 mo. Total of payments \$9896.40. Upon approved credit. Tax, title & license excluded.

WE ONLY DESERVE YOUR BUSINESS WHEN WE EARN YOUR BUSINESS

See James Smart, Ronnie Ruppe, Bill Houck, Bill Gantt, Bus. Manager Or Randy Kinder Sales Mgr.

Or Call **482-6771**

STOP BY HWY. 74 BYPASS EAST

SHELBY Mazda

Hwy. 74 East (Bypass) Shelby, N.C.

482-6771

QUALITY BUILT HOMES — QUALITY BUILT HOMES — QUALITY BUILT HOMES

Quality Built Homes

'87 CLOSE-OUT SPECIALS

SAVE THOUSANDS!

NEED TO SELL! REDUCING INVENTORY

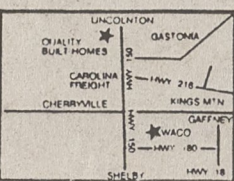
- No. 0973 **14x70 3 BR & 2 BATHS**
Cathedral ceilings, ceiling fan, finished cabinets & closets, deluxe furniture package, carpet throughout. **\$201** Per Mo.
- No. 2292 **14x70 WOODSIDING HOME**
With 2 BR & 2 BTHS, has fireplace with blower, ceiling fan, storm windows, glass hex dinette, glass coffee & end tables. **\$213** Per Mo.
- No. 0860 **14x60 2 BR & 1 BTH**
Vaulted & blown ceilings. Built-in entertainment center, frost-free refrigerator. Stainless steel sinks, garden tub, house type doors. **\$165** Per Mo.
- No. 0585 **14x70 2 BR & 2 BTH**
Cottage roof with fireplace, built-in corner hutch in kitchen & LR. House type doors, garden tub, total electric, ceiling fan. **\$213** Per Mo.
- No. 9324 **DOUBLEWIDE 26x44—GREATROOM**
With fireplace, 3 BR & 2 BTH. Dishwasher, stereo, vinyl lap siding, fiberglass, shingle roof, storm door & windows. **\$298** Per Mo.
- No. 0890 **1987 14x70 3 BR & 2 BTH**
With central heat & air, deluxe carpet, deluxe furniture package, ceiling fan, vaulted & blown ceilings, deluxe countertops, etc. **\$244⁶²** Per Mo.
- No. 0653 **80 FT. LONG**
With a 35 ft. master bedroom suite. Bath has Roman tub and standup shower, mirrored closets, diningroom with glass table, fireplace w/blower, utility room, sliding glass doors, vaulted and blown ceilings, large rooms throughout. too many other features to list. Must see!!! **\$257²²** Per Mo.
- No. 9605 **DOUBLEWIDE 3 BR 2 BTH**
With rock fireplace w/blower, wood siding, fiberglass shingle roof, storm windows & doors, blue/gray carpet throughout with deluxe pad, garden tub, garden window. Exterior also has a Florida stucco application. Must see!!! **\$256³⁸** Per Mo.
- No. 0979 **70x14 2 BR & 2 BTH**
With large bedrooms, large living room., built-in entertainment center, blown and vaulted ceilings, built in wine glass holders, many other features must see!!! **\$197⁵⁷** Per Mo.

2 GREAT LOCATIONS

Quality Built Mobile Homes

Located On Hwy. 150 East, (One Mile Past Carolina Freight), Cherryville, NC | At The Old Waco Trade Lot Hwy. 150, Waco, N.C.
Monday-Friday 9 A.M. Til 6 P.M., Saturday 9 A.M. Til 5 P.M.

PHONE: 435-4101 — 867-4134 — 435-1234 — 864-6464



QUALITY BUILT HOMES — QUALITY BUILT HOMES — QUALITY BUILT HOMES