



1935 BASEBALL CHAMPIONS - Here's a picture of the 1935 Kings Mountain High School baseball team which won the Western Conference championship. The team lost only one game and defeated Cherryville 9-5 in the championship game. Three members of the team (Jake Early, Eugene Goforth and Clyde McSwain) went on to play pro ball. Team members include, front row, left to right, Roy Thurmond,

assistant manager; Tommie Reynolds, J.D. Hullender, Luther Morrison, Jake Early, Clyde McSwain, Leslie Mode, Gene Leonard, and George Mauney, assistant manager. Back row, left to right, Thomas Roberts, manager; Theodore Thornburg, Oscar White, J.R. Bridges, James White, Eugene Goforth, Henry Ford, Marvin Foster, and Coach Fulkerson. Front, Clyde Putnam, assistant manager.

Industrial Basketball Play Opens

Industrial League basketball games will be played each Wednesday night through March 16 at the Kings Mountain Community Center and Kings Mountain Junior High gyms.

Teams entered in the race are Easco, Reliance Electric, Buckeye Fire Equipment, Copeland, Spectrum, Cleve-mont, Anvil Knitwear, Com-bustion Engineering, Eaton, Curtis Wright, City of Kings Mountain, Kinmont In-dustries, Commercial Shear-ing and Stevco Knit.

Five games will be played each night at the community center, beginning at 5 p.m., and two games will be played each night at the junior high, beginning at 7 p.m.

THE SCHEDULE (At KMCC)

Dec. 9 - Commercial Shear-

ing vs. Stevco, Easco vs. An-vil, Combustion vs. Cleve-mont, Eaton vs. Spectrum, Curtis Wright vs. Copeland.

Jan. 6 - Copeland vs. Anvil, Spectrum vs. Cleve-mont, Kinmont vs. Easco, Commer-cial vs. Kings Mountain, Stevco vs. Curtis Wright.

Jan. 13 - Anvil vs. Kinmont, Combustion vs. KM, Eaton vs. Curtis Wright, Easco vs. Buckeye, Copeland vs. Reliance.

Jan. 20 - KM vs. Spectrum, Kinmont vs. Copeland, Com-mercial vs. Buckeye, Stevco vs. Reliance, Easco vs. Com-bustion.

Jan. 27 - Reliance vs. KM, Buckeye vs. Curtis Wright, Copeland vs. Eaton, Spec-trum vs. Combustion, Anvil vs. Cleve-mont.

Feb. 3 - Spectrum vs. Buckeye, Reliance vs. Cleve-mont, Anvil vs. Stevco, Com-

bustion vs. KM, Eaton vs. Kinmont.

Feb. 10 - Easco vs. Eaton, Curtis Wright vs. Combustion, KM vs. Anvil, Kinmont vs. Cleve-mont, Spectrum vs. Commercial.

Feb. 17 - Anvil vs. Combustion, Easco vs. Stevco, Reliance vs. Commercial, Buckeye vs. Kinmont, Copeland vs. KM.

Feb. 24 - Curtis Wright vs. Commercial, KM vs. Kin-mont, Easco vs. Spectrum, Cleve-mont vs. Copeland, Buckeye vs. Anvil.

Mar. 2 - Stevco vs. Cleve-mont, Reliance vs. Spectrum, Buckeye vs. Copeland, Easco vs. Curtis Wright, KM vs. Eaton.

Mar. 9 - Copeland vs. Com-bustion, Eaton vs. Buckeye, Reliance vs. Curtis Wright, KM vs. Stevco, Kinmont vs. Commercial.

Mar. 16 - Kinmont vs. Cur-tis Wright, Commercial vs. Eaton, Stevco vs. Combustion, Reliance vs. Anvil, Buckeye vs. Cleve-mont.

Patriots Win Two Matches

From Page 6-A

185 - Lesco Gardner (KM) pinned Carl Love; Unl. - Rico Strong (KM) pinned Frank Hopkins. (Prelims - Robbie Ruff and Andy Hollifield of KM won, and Bill Ford tied.)

NEWTON MATCH

78 - Al Gargis (N) pinned Brian Timms; 88- Bo Thongha pinned Colin Nixon; 98 - Tee Cole (KM) won by forfeit; 105 - Andy Hollifield (KM) pinned Chandler McGee; 112 - Grant Holder (KM?) pinned Carsey Jones; 119 - Souli Sourisoud (KM) pinned David Berrymore; 126 - Derek Williams (KM) dec. Jerry Coffin; 132 - Gene Smith (KM) pinned Nick Pearce; 138 - Tim McClain (KM) pinned Darin Wright; 145 - Shawn Bradshaw (N) dec. Kyle Hamrick; 156 - Brad Guin (KM) pinned Matt Smith; 167 -Dion Gibson (N) pinned Jermaine Grier; 185 - Ryan Baker (N) dec. Bart Guin; Unl. - Tony Young (KM) won by forfeit.

BOWLING!

The race continues to tighten in Tuesday night Duckpin Bowling League action at Dilling Heating.

First place Wally's lost three of four games to John Dilling Tuesday night, cutting the leaders' lead to just one game over Johnny Dye, who won three of four from Betty Hullender.

Wally's now has a 28-24 record, followed by Dye at 27-25, Dilling 26-26 and Hullender 23-29.

John Dilling's 141 line and 387 set and Dot Mobley's 127 line and 311 series led Dilling's team to victory Tuesday. Walter Mocanu led his team with a 133 line and 361 set and Lib Gault added a 119 line and 326 set.

Jack Barrett bowled a 139 line and 376 set and Johnny Dye added a 135-359 to lead Dye over Hullender. R.W. Hullender had a 159 line and 371 set, Betty Hullender a 116-322 and Pat Blanton a 107-312 for the losers.

Jerome Grant's 129 line and 327 set led Walt's over Bobby's. Bobby Rathbone led the losers with a 108 line and 317 set.

Allen Myers' 113 line and 323 set and Linda Neely's 118 line and 320 series led the Hopefuls over Bill's. Joann Myers led the losers with a 101 line and 284 set.

(Mountaineer Church League, Friday night, Major League Lanes, Shelby).

High set scratch - Ray Lockhart 574, Cheryl Kidd 509.

High set handicap - Ray Lockhart 640, Cheryl Kidd 617.

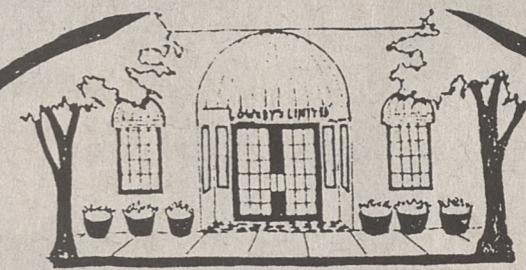
High game scratch - Ray Lockhart 221, Cheryl Kidd 174.

High game handicap - Ray Lockhart 243, Nan Fletcher 216.

First place team - Keen Pins 74-22.

Note - Two women bowlers are needed. They must be at least 18 years old and attend church. If interested, call Gene Penner at 739-1515 or Major League Lanes, Shelby, at 482-1442.

Walt's swept Bobby's and the Hopefuls swept Bill's in Mixed League action Thursday night at Dilling Heating.



DIAMOND TENNIS BRACELETS

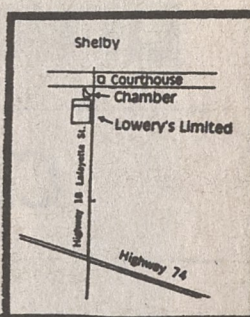
1 ct.....695.00 3 ct.....1895.00
2 ct.....1395.00 4 ct.....2395.00

LOWERY'S LIMITED

214 SOUTH LAFAYETTE ST.
SHELBY

484-2940

LAYAWAY LOWERY'S CHARGE BANK CARDS



PAUL CAMERON
WBTV Sports Director

In the words of Dick Vitale, "J.R. gets the P.T. without the T.O. in the P.U.A. with the rock for the monster mash." Translation—Herman (J.R.) Reid's playing time is without many turnovers for the Tar Heels, especially when he slam dunks the basketball after standing near the post-up area. Next week, Dick sees spot run.

That black cloud that's been following Dean Smith this fall may be dissipating. Deano's Heels are out of court and solidifying on it.

Know what they're calling 5-foot-3 Tyrone Bogues in Washington? The small calibre bullet.

Sparky Woods of (NCAA 1-AA) Appalachian State, and Woody Fish of (N.A.I.A.) Gardner-Webb are my picks for national football coaches of the year. Both men have not only won alot of games, but they've built something of more lasting value to each school—solid football programs.

Sport Magazine did the smart thing and waited for the season to start before releasing a poll of college hoops. They rate Norm Sloan's Florida Gators number one, calling 7-2 center Dwayne Shintzius the next Bill Walton, only taller. They also put Maryland in the top ten. (You remember, Terpies, 0-14 vs. the ACC last year.) This year, says the poll, Maryland will feature more shooters, slashers and enforcers than your average crime family. And the Terps will be deeper than Loch Ness.

Incidentally, the Sport Magazine poll has UNC #6, Duke #14, and N.C. State #16.

Two of the most annoying things in my life always happen in the fall—raking leaves and Christmas shopping—I'd like to bag one and not the other.

(Watch Paul Cameron at 6:00 pm and 11:00 pm on WBTV, Channel 3.)

Jackson's Cafeteria

NOW OPEN IN GASTON MALL
East Franklin And Cox Road - Gastonia, N.C.
Entrance Between Brendles And Gentlemen's Clothiers
868-4181

Tasty And Reasonably Priced Meals
in a pleasant and relaxing
atmosphere.

- Tender Roast Beef
- Chicken & Dumplings
- BBQ Beef & Ribs
- Broiled & Fried Fish
- Glazed Ham
- Mashed Potatoes
- Cream Corn
- Broccoli Hollandaise
- Steamed Cabbage
- Salads
- Hot Cobblers
- Banana Pudding
- Egg Custard
- Chocolate Pie
- Homemade Breads

and much, much more!

Serving Lunch From 11:00-2:00
Dinner From 4:30-8:30
Monday-Saturday
Sunday 11:00-2:15

CARRY-OUTS AVAILABLE
—TOUR BUSES WELCOME—

PRIVATE DINING ROOM AVAILABLE

Jackson's Cafeteria
—A Nice Place To Meet Your Friends—