

MRS. FOREST HOWARD HOUSER

### Housers Exchange Vows In Cherryville Ceremony

First Baptist Church of Cherryville was the setting for the wedding Saturday at 6 p.m. uniting Erica Denise Duncan and Forest Howard Houser.

The bride, daughter of Mrs. Shilda Pope and Eric Duncan, is a graduate of Cherryville High School and Designers School of Cosmetic Art. She also attended Gaston College and is employed by Gaston Memorial Hospital and La Boutique of Cherryville.

The bridegroom, son of Mr. and Mrs. William E. Houser, is a graduate of Cherryville High School. He attended Western Carolina University and Gaston College. He has a civil engineering degree and is employed by Miller Surveying of Hickory.

The Rev. Mike Minnix officiated at the double-ring ceremony. Music was presented by Lisa Dellinger, organist, and the Rev. J.W. Stiles, soloist.

Acolytes were Bart Heavner, Edward Hogg and Eddie McMahan. Programs were given by Debbie McMahan and Julie McMahan. The register was attended by Mr. and Mrs. Murray Beam Jr.

The altar was decorated with ferns, brass candleabras

covered with poinsettias, roses, baby's breath and orange blossoms.

The bride, given in marriage by her father, wore a formal gown of candlelight satin. The bodice was beautifully accented with seed pearls and iridescents from the top of the sweetheart neckline to the tip of the basque waist.

The bouffant long sleeves of illusion were decorated with appliques of embroidered lace, seed pearls and iridescents. The cathedral length train was covered with pyramids of appliqued lace decorated with seed pearls and iridescents and was trimmed with embroidered lace. The bride wore a waist length veil of candlelight illusion topped with a crystal crown. She carried a bouquet of red roses, orange blossoms and baby's breath.

Mrs. Pamela Poston was her cousin's matron of honor. Melanie Houser, sister of the groom, was maid of honor. Bridesmaids were Karen Huffman of Hickory, Heidi Huffman, Kim Woodruff, Mitzi Quinn, Treva Gantt, Heidi Gantt, Bobbie Holt, Teresa Gardo and Shannon

Turn To Page 5-B



VICTORIA ANN SIMS  
PHILLIP DEAN CAMPBELL

ENGAGEMENT ANNOUNCED—Mr. and Mrs. Charles Sims of Kings Mountain announce the engagement of their daughter, Victoria Ann, and Phillip Dean Campbell, son of Mr. and Mrs. William Campbell of Bessemer City. Miss Sims is a 1985 graduate of Kings Mountain Senior High School and is a senior at Appalachian State University. Mr. Campbell is a 1982 graduate of Kings Mountain Senior High School and a 1987 graduate of Appalachian State University. He has a B.S. in Criminal Justice and a minor in psychology. A 1989 wedding is planned.

## WE PAY CASH FOR GLASS BOTTLES & JARS

Save it. Sort it by color (clear, green, brown). Then bring it in to us. It's a great way to earn extra money for yourself or your organization. It's great for the environment, too! Bring your glass containers to:

**C&C SCRAP IRON & METAL, INC.**  
Kings Mountain - Grover Highway 739-8053

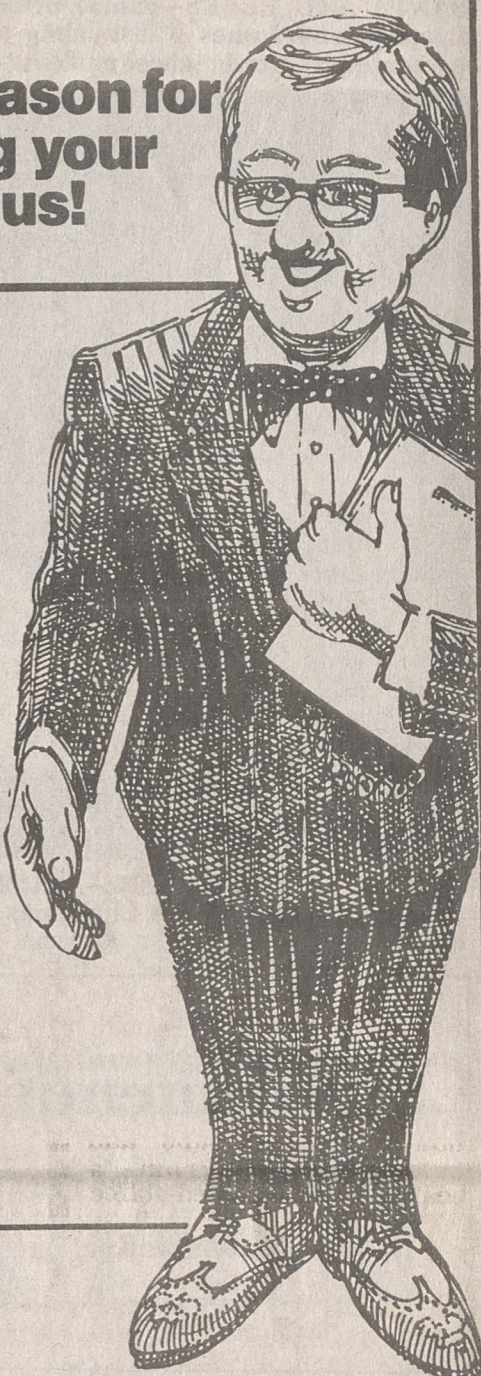
**Glass is 100% Recyclable**

### Legion Auxiliary Program Slated

A Christmas musical program will feature Thursday night's meeting of the American Legion Auxiliary and a covered dish supper will be served at 6:30 p.m. at the American Legion Building. President Myrtle Christenson will preside at a brief business meeting.

## PERFORMANCE

A good reason for entrusting your money to us!



Most people agree, in this day and age, what you don't know about financial matters can hurt your savings account. It takes people with knowledge at hand to put your financial picture in perspective. We offer the type of service that can help you plan for financial security... and the type of people who know their business. Our record speaks for itself.

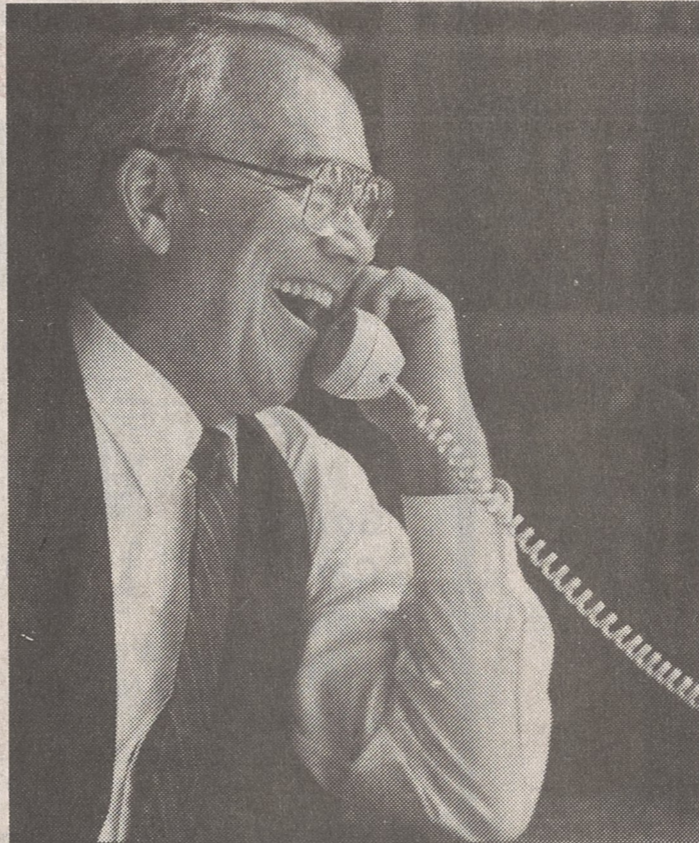


### FIRST FEDERAL



**SAVINGS & LOAN ASSOCIATION**  
**KINGS MOUNTAIN OFFICE**  
300 WEST MOUNTAIN STREET  
PHONE (704) 739-4781  
**GASTONIA OFFICE**  
529 SOUTH NEW HOPE ROAD  
PHONE (704) 865-1111

# Hello, Everyone!



Isn't there someone special you'd like to call?

A 10-MINUTE CALL FROM KING'S MOUNTAIN TO:	
Cherryville	\$1.05
Boone	\$2.62
Charlotte	\$1.47
Rutherfordton	\$1.92

Call on weekends or after 11 p.m. and save even more. Rates listed above are in effect 5-11 p.m., Sunday-Friday.



**Southern Bell**  
A BELL SOUTH Company

Southern Bell provides services within your calling zone and a connection to other long distance companies.

Dial Station (1+) charges apply. These charges do not apply to person-to-person, coin, hotel guest, calling card, collect calls, calls charged to another number, or to time and charge calls. Rates subject to change. Daytime rates are higher. Rates do not reflect applicable federal, state and local taxes. Applies to Intra-LATA long distance calls only.

## This Is Southern Bell!