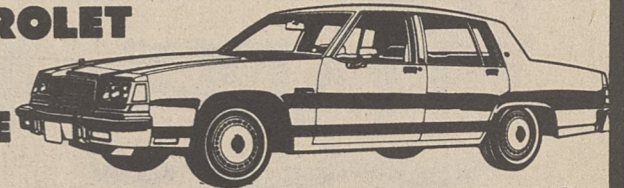


# JIM TESTA

• CHEVROLET  
• JEEP  
• EAGLE



KINGS MOUNTAIN, N.C.

|  |  |  |
|--|--|--|
| <p><b>1987 JEEP COMMANCHE TRUCK</b><br/>4 speed, air, AM/FM stereo, 21,000 miles. Red with tan inside.</p>                     | <p><b>1986 GMC PICKUP LONG BED</b><br/>Two-tone blue, V-8, auto, air, PS, AM/FM stereo with cassette, rally wheels, 56,000 miles.</p>                      | <p><b>1984 FORD LTD 4 DR. SEDAN</b><br/>White with blue inside, auto, air, power steering.</p>   |
| <p><b>1986 NISSAN TRUCK EX-CAB 4x4</b><br/>5 speed, air, AM/FM stereo, camper cover, yellow with tan inside. 17,000 miles.</p> | <p><b>1985 CHEVY PICKUP LONG BED</b><br/>Red with red inside, wire wheels, V-8, auto, air, 45,000 miles.</p>   | <p><b>1986 BUICK CENTURY 4 DR. SEDAN</b><br/>White with maroon inside. Auto, air, power steering, wire wheels, 42,000 miles.</p>   |
| <p><b>1985 NISSAN TRUCK 4x4</b><br/>5 speed, air, stereo, silver in color, grey inside, 30,000 miles.</p>                      | <p><b>1985 CHEVY PICKUP LONGBED</b><br/>Red with red inside, wire wheels, V-8, auto, air, 45,000 miles.</p>  | <p><b>1985 OLDS CUTLASS COUPE BROUGHAM</b><br/>Silver in color, tilt, cruise, stereo, power windows, locks, wire wheels, 20,000 miles. This car is brand new inside &amp; out.</p> |
| <p><b>1987 FORD RANGER</b><br/>White in color, blue inside, 4 spd., heater, step bumper, 3,000 miles.</p>                      | <p><b>1985 BUICK PARK AVENUE</b><br/>Fully loaded with all power buttons, black with grey inside, 44,000 miles.</p>  | <p><b>1986 BUICK REGAL COUPE</b><br/>White with maroon vinyl top, t-tops, auto, air, power steering, power brakes, 31,000 miles, AM/FM stereo. A real sharp car.</p>               |
| <p><b>1985 FORD RANGER</b><br/>Light blue in color, blue inside, air, 4 speed w/overdrive, 44,000 miles.</p>                   | <p><b>1986 FORD TAURUS 4 DR.</b><br/>MTS package, fully loaded, 17,000 miles. Blue with blue inside.</p>   | <p><b>1985 CHEVY CAPRICE 4 DR. SEDAN</b><br/>Light green in color, fully loaded, 35,000 miles, new tires, nicest '85 Chevy you can buy.</p>  |
| <p><b>1985 FORD F150</b><br/>White in color, 6 cylinder, auto, power steering, camper cover, wire wheels, 23,000 miles.</p>    | <p><b>1987 CHEVY CELEBRITY 4 DR. SEDAN</b><br/>Blue with blue inside, 12,000 miles, AM/FM stereo, rally wheels, deck rack, auto, air, power steering.</p>  | <p><b>1984 MERCURY GRAND MARQUIS 4 DR. SEDAN</b><br/>Navy blue in color, fully loaded, 40,000 miles. A super nice car for the money.</p>   |
| <p><b>1987 NISSAN TRUCK SPORT PACKAGE</b><br/>5 speed, Blue in color, AM/FM stereo, 13,000 miles.</p>                          | <p><b>1987 CHEVY CELEBRITY 4 DR. SEDAN</b><br/>White with blue inside. AM/FM stereo, 11,000 miles, rally wheels, deck rack, auto, air, power steering.</p> |  |

**LOOK  
THESE CARS  
AND TRUCKS  
OVER....  
PICK THE  
ONE YOU  
LIKE....  
MAKE US  
AN OFFER...  
IT'S  
EASY  
TO BUY FROM  
JIM TESTA**

**THE  
BEST**

**IN PRE-OWNED  
AUTOS**

**THE LIST OF CARS & TRUCKS ARE ONLY A FEW OF PRE-OWNED VEHICLES THAT WE HAVE. WE HAVE PLENTY OTHERS AT BIG SAVINGS. IF YOU ARE LOOKING FOR LATE MODELS, BE SURE TO SHOP US BEFORE YOU BUY ELSE WHERE! I GUARANTEE TO SAVE YOU MONEY!**

*Jim Testa*

|   |  |  |
|---|--|--|
| <p><b>1986 OLDS DELTA 88 ROYALLE BROUGHAM 4 DR.</b><br/>Fully loaded, maroon in color, wire wheels, 16,000 miles. Showroom condition.</p>             | <p><b>1986 PONTIAC GRAND AM 2 DR. COUPE</b><br/>Grey in color, fully loaded. A super sharp car.</p>              | <p><b>1987 CHEVY CARGO VAN</b><br/>V-8, auto, air, power steering. This van has only 14,000 miles. Like new inside &amp; out.</p>                        |
| <p><b>1985 MERCURY MARQUIS LS</b><br/>Black in color. Maroon inside, fully loaded. This is a black beauty!</p>  | <p><b>1986 PONTIAC GRAND AM 4 DR. LE</b><br/>Light blue, blue vinyl top, fully loaded. Super nice car.</p>       | <p><b>1986 CHEVY ASTRO PASS. VAN</b><br/>Fully loaded, front &amp; rear air, new tires, maroon in color. Super savings.</p>                              |
| <p><b>1986 OLDS CUTLASS CIERA 4 DR. SEDAN</b><br/>Light blue in color, tilt, cruise, AM/FM stereo, wire wheels, 35,000 miles. Showroom condition.</p> | <p><b>1986 PONTIAC BONNEVILLE 4 DR.</b><br/>Light blue, fully loaded, 36,000 miles. A real nice family car.</p>  | <p><b>1986 FORD BRONCO II</b><br/>Grey in color, 5 speed, air, 10,000 miles. Like new inside &amp; out. AM/FM stereo.</p>                                |
| <p><b>1986 PONTIAC FIREBIRD</b><br/>Grey in color, tilt, cruise, stereo, rally wheels, 26,000 miles. A super nice car.</p>                            | <p><b>1986 CHEVY SPRINT 2 DR.</b><br/>Red in color. This car will save you big bucks at the gas pumps.</p>       | <p><b>1985 CHEVY S-10 BLAZER 4x4</b><br/>Navy blue, tilt, cruise, stereo, nice wheels &amp; tires, auto, air, V-6 engine, Tahoe Package.</p>             |
| <p><b>1986 PONTIAC TRANS AM</b><br/>Silver in color, fully loaded, 19,000 miles. A super nice sports car.</p>   | <p><b>1986 FORD RANGER XLT LARIAT</b><br/>Light blue, nicest Ford truck in town. Fully loaded, 13,000 miles.</p> | <p><b>1984 CORVETTE COUPE</b><br/>Brown in color, brown inside. Auto, air, fully loaded. This vette has only 13,000 miles on it. Showroom condition.</p> |
|   | <p><b>1985 GMC SHORTBED</b><br/>Black &amp; silver in color, fully loaded, V-8, AM/FM stereo.</p>                | <p><b>1981 CORVETTE COUPE</b><br/>Red in color, t-tops, saddle inside, fully loaded, auto, air. A super sharp car.</p>                                   |
|   | <p><b>1984 GMC 3/4 TON WORK TRUCK</b><br/>V-8, auto, power steering, new tires.</p>                              |  |

**JIM TESTA**

**CHEVROLET-JEEP-EAGLE**  
I-85 At York Road, Kings Mountain, N.C.  
**739-5471**