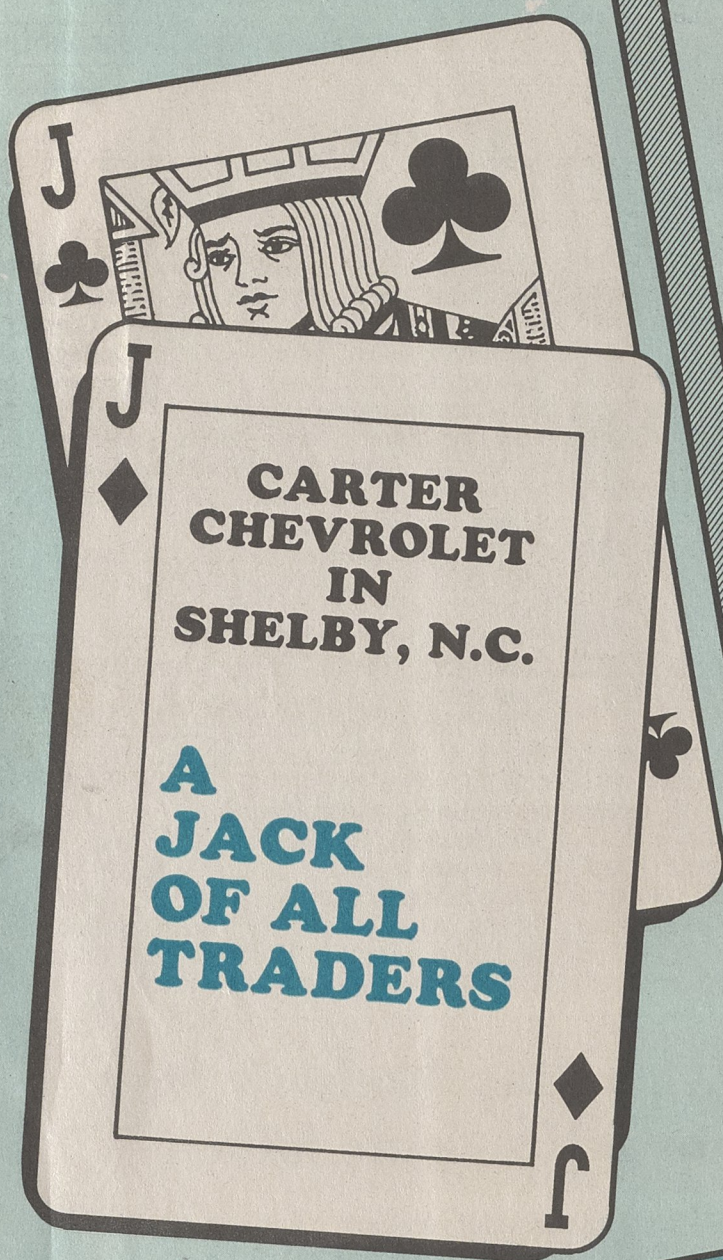


A GOOD DEAL AT CARTER CHEVROLET



J
**CARTER CHEVROLET
IN
SHELBY, N.C.**

**A
JACK
OF ALL
TRADERS**



K
**KING
SIZE
DISCOUNTS**

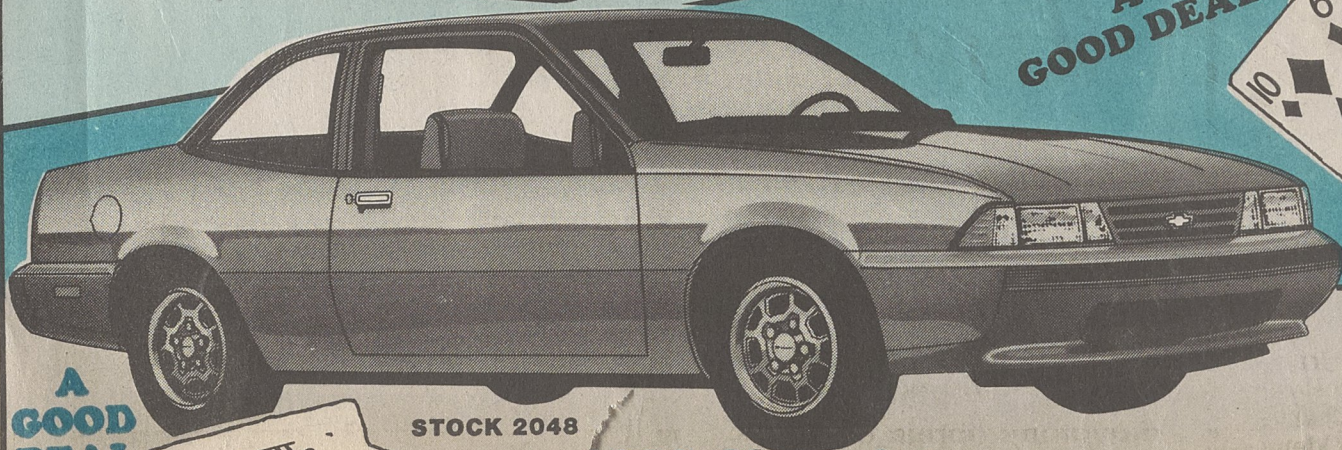
**GET UP TO
\$1,200
CASH BACK**

**AT
CARTER
CHEVROLET
IN
SHELBY, N.C.**

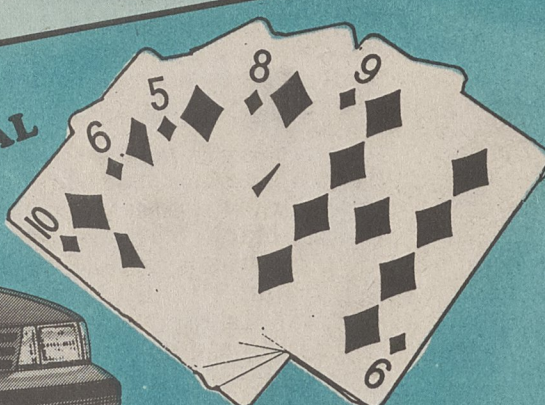


A
**TOP
QUALITY
SERVICE
AFTER THE
SALE**

**IS
YOUR
ACE
IN
THE
HOLE**



A
GOOD DEAL



1988 Chevrolet Cavalier
2-Door Coupe, power door locks, rear defogger, air conditioning, power steering, aluminum wheels, sport mirrors, body side moldings.

LIST.....	\$9892
DISCOUNT.....	\$502
REBATE.....	\$400

YOU PAY **\$8990***



A
GOOD DEAL

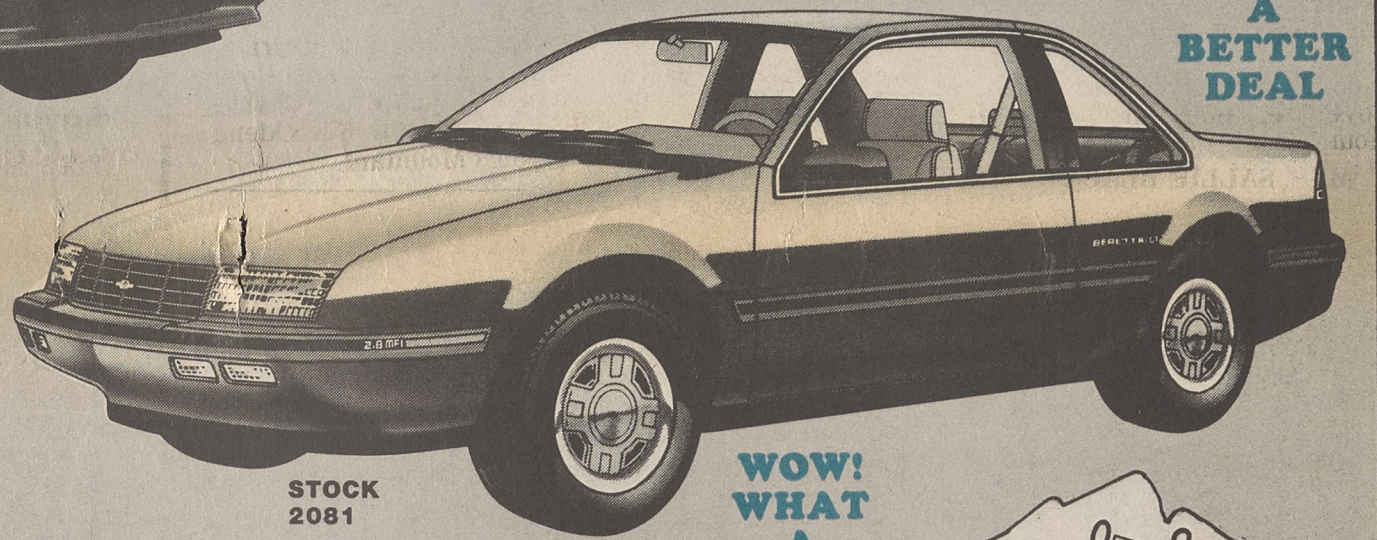
STOCK 2048

1988 Chevrolet Beretta

Automatic, air conditioned, AM/FM stereo, clock, carpeted floor mats, luxury cloth interior.

LIST.....	\$11,214
DISCOUNT.....	\$814
REBATE.....	\$500

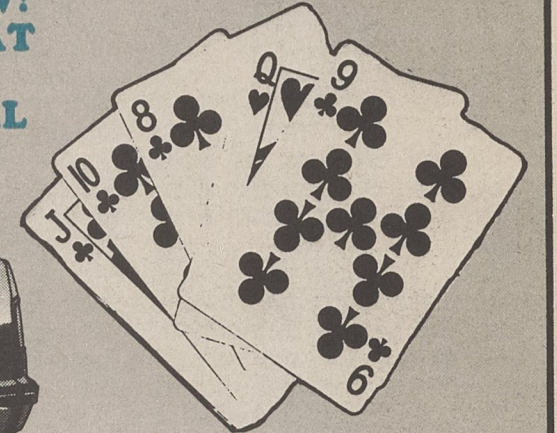
YOU PAY **\$9900***



A
BETTER DEAL

STOCK 2081

WOW!
WHAT
A
DEAL



1988 Chevrolet Celebrity

4-Door, dark blue metallic, cloth seats, air conditioning, power steering, power brakes, automatic, white sidewall radial tires.

LIST.....	\$12,730
DISCOUNT.....	\$1280
REBATE.....	\$750

YOU PAY

\$10,700*



A
GOOD DEAL

STOCK 1782

S-10 Special Demo

Fuel injected V6, automatic, air conditioning, power steering, power brakes, AM/FM stereo clock, rear step bumper, rally wheels, solid dark blue, tinted glass, factory sunshine striping.

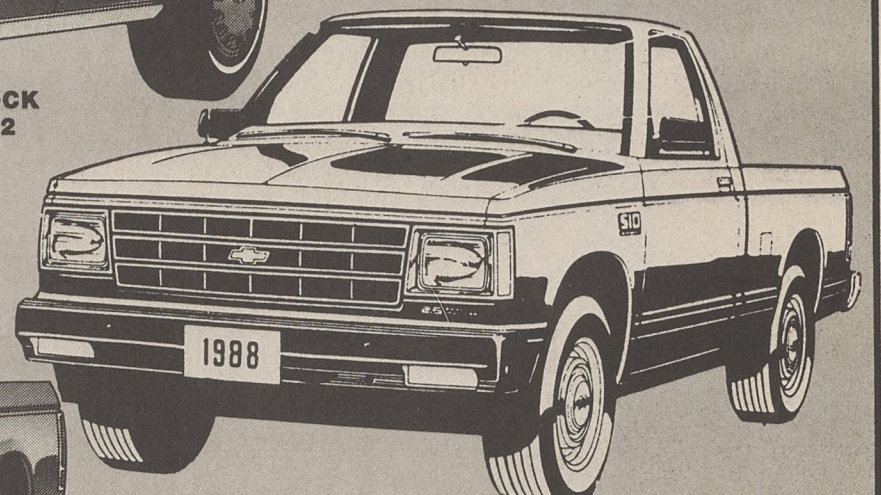
LIST.....	\$10,929
DISCOUNT.....	\$1439
REBATE.....	\$500

YOU PAY

\$8990*



STOCK 1486



1988 S-10 Trucks

5 speed, rear step bumper, 1000 lb. payload, solid paint, under coating. St. No. 1986.

\$7400 or \$144^{mo.}

To finance \$6400.56 for 60 mos., at 12.5% APR with only \$999.40 down cash or trade on approved credit. Just add N.C. Tax, 29.10 Adm. Fee.



**DEUCES
ARE
WILD
AT
CARTERS**

CARTER CHEVROLET

482-4341, 200 WEST DIXON BLVD., SHELBY 482-4341

FREE TANK OF GAS WITH EVERY NEW CAR SOLD

See:
Ray Walker
Joe Hamrick
Morris Ramsaur
Mark Johnson
Rick Philbeck
Paul Carter
Conway Carter
Mark Carter -
General Sales Manager
Derrell Pearson
Carl Bell -
Used Car Manager

*Just add N.C. Tax, Tag and 29.10 Adm. Fee.