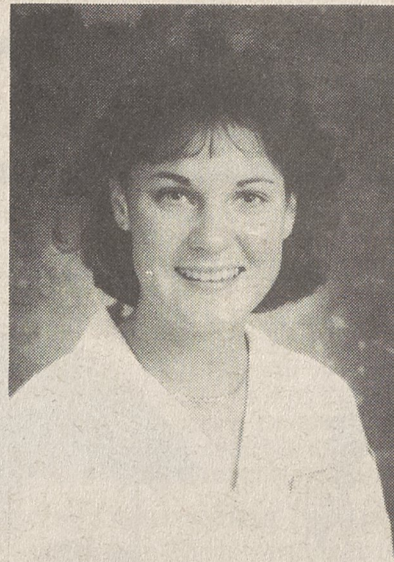


**Wolfe Earns CMA Credentials**

Anne Elizabeth Wolfe, CMA, earned the prestigious Certified Medical Assistant (CMA) credential by passing the American Association of Medical Assistants' certification examination in June. Ms. Wolfe is a graduate of the medical assisting program at King's College in Charlotte. She is daughter of Mr. and Mrs. Houston Wolfe.

The certification examination, administered by AAMA's Certifying Board and the National Board of Medical Examiners, tests clinical and administrative knowledge needed to perform in a licensed health care practitioner's office. The examination covers a wide variety of topics, from medical law and ethics to

medical record-keeping and diagnostic testing. Certified medical assistants are employed in a wide range of health care delivery facilities, but the medical assistant is the only allied health practitioner trained specifically for the physician's office. Health care's most versatile allied health practitioner is the Certified Medical Assistant. The American Association of Medical Assistants is a professional association headquartered in Chicago, Illinois. Representing 11,000 members throughout the country and over 46,000 certified medical assistants, AAMA provides continuing education opportunities and programs and represents the interests of medical assistants.



ANNE WOLFE

**Kiss Baby Week Slated Sept. 18-24**

"A Kiss Can Save a Life - So, Kiss Your Baby Today!" is the theme of the Gaston-Cleveland Association of Insurance Women's 1988 "Kiss Your Baby Week" education campaign, according to Debra Hoffman, chairman of the event.

"One of the most obvious symptoms of CF, a fatal lung disease, is a very strong, salty taste to the skin," explained Ms. Hoffman. "Our Association will be conveying the KYB message during Kiss Your Baby Week, September 18-24 in an attempt to reach as many parents as possible with information about CF." Ms. Hoffman added that the Gaston-Cleveland Association will be sponsoring a Pretty Baby Contest to promote awareness of CF.

Ms. Hoffman urged parents to consult their child's pediatrician if a very strong salty taste of the skin is detected. Other signs of CF include persistent coughing with excessive mucus; pneumonia more than once; excessive appetite with poor weight gain, and recurrent wheezing. For more information about CF call the Cystic Fibrosis Foundation at 1-800-682-6858.

**Woman Left Seconds Before Fatal Crash**

From Page 1  
watch the rest of the air show.

The Lattas have lived in Germany for 13 months. Mrs. Latta, daughter of Goldie McDaniel and the late Dean McDaniel of Kings Mountain, is a 1984 graduate of KMSHS and met her husband when both were students at Appalachian State University. Their baby was born while they were stationed in Colorado.

Mrs. Latta said the horrible tragedy in West Germany would compare to the crash of a space shuttle in America. "It was just horrible and we don't

know how many of our friends escaped," she said.

"Don't you have your television on?" Linda Ann asked her mother when Goldie McDaniel answered her telephone. Goldie was glad she wasn't watching the news, as she usually does on Sunday evening. Mrs. McDaniel said she doesn't know when her daughter and family will be on furlough to visit her in Kings Mountain and his parents in Greensboro. As for herself, she doesn't plan any flying trips. "If it were a matter of life and death I would get on an airplane," she said. "I'm just glad they're all right."

**Lowery's Limited**  
**Sidewalk Sale**  
Uptown Shelby  
**Saturday, Sept. 3 Only**  
9:00-2:00  
**Incredible Savings**  
on selected merchandise  
**Lowery's Limited**  
214 S. LaFayette St.  
Shelby, N.C.  
484-2940

ON SALE THIS THURSDAY, FRIDAY, SATURDAY AND SUNDAY. OPEN REGULAR HOURS ON LABOR DAY ...

**WHY PAY MORE?**

DRIVE AWAY TODAY IN ONE OF THESE BEAUTIFUL CARS AT A PRICE YOU CAN AFFORD TO PAY ...



**1985 CHRYSLER LeBARON**

2-door coupe, fully loaded, grey exterior, grey interior, fully loaded with tilt, cruise, air condition, power windows and locks, wire wheels. A real sharp car at a price you can afford. 44,000 well maintained miles.



**1986 CHEVROLET Z-24 HATCHBACK**

2-door, charcoal exterior, grey interior, tilt, stereo cassette, 31,000 miles. Double sharp inside and out. See it today at Jim Testa, I-85 at York Road in Kings Mountain, N.C.



**1988 CHEVROLET CORSICA**

Fleet unit, just purchased and we're ready to pass the savings on to you. 4-door, automatic with stereo cassette. Beautiful blue exterior with dark blue interior. Only 20,000 miles and that means savings for you.



**1983 GRAND WAGONEER LTD.**

4-wheel drive, fully loaded, 63,000 miles, one owner, looks and drives like new. Well maintained. Offered at tremendous savings.



**1985 PONTIAC 6000 STE**

4-door, black with charcoal interior, fully loaded, 45,000 miles, air condition, tilt, AM/FM cassette, sun roof, aluminum style wheels. Priced to sell.



**1988 CHEVROLET BERETTA**

This is a fleet unit with very low miles for this car. V-6, automatic, air, AM/FM stereo, super sharp, just broke in good and ready to hit the road at big savings from Jim Testa.



**1986 CAPRICE COUPE LANDAU**

Dark blue, blue interior, 26,000 miles, V-8 engine, all the extras including wire wheels, AM/FM stereo, cassette, power windows and locks, cruise and tilt. Make us an offer.



**1986 BUICK LeSABRE LIMITED COUPE**

Red exterior, red interior, all the Buick extras. Aluminum style wheels. 15,000 actual miles. Can be bought right.



**1987 PONTIAC BONNEVILLE**

Grey exterior, maroon interior, 4-door, tilt, cruise, stereo, V-6 engine, new tires, air condition, double sharp vehicle.

PICTURED ABOVE ARE JUST A FEW OF THE MANY CARS YOU WILL FIND ON SALE THIS WEEKEND!

**JIM TESTA**

**CHEVROLET - JEEP - EAGLE**

I-85 At York Road - Kings Mountain, N.C. Phone 739-5471

**HOURS:**  
8:00 'TIL 8:00  
MONDAY-FRIDAY  
•  
8:00 'TIL 5:00  
SATURDAY  
•  
1:00 'TIL 6:00  
SUNDAY