

Students Await Train...

**\* Film**

From Page 1-A

statewide by Bob Mickey. Rex Gregory, a vice president with Norfolk-Southern, was the cameraman.

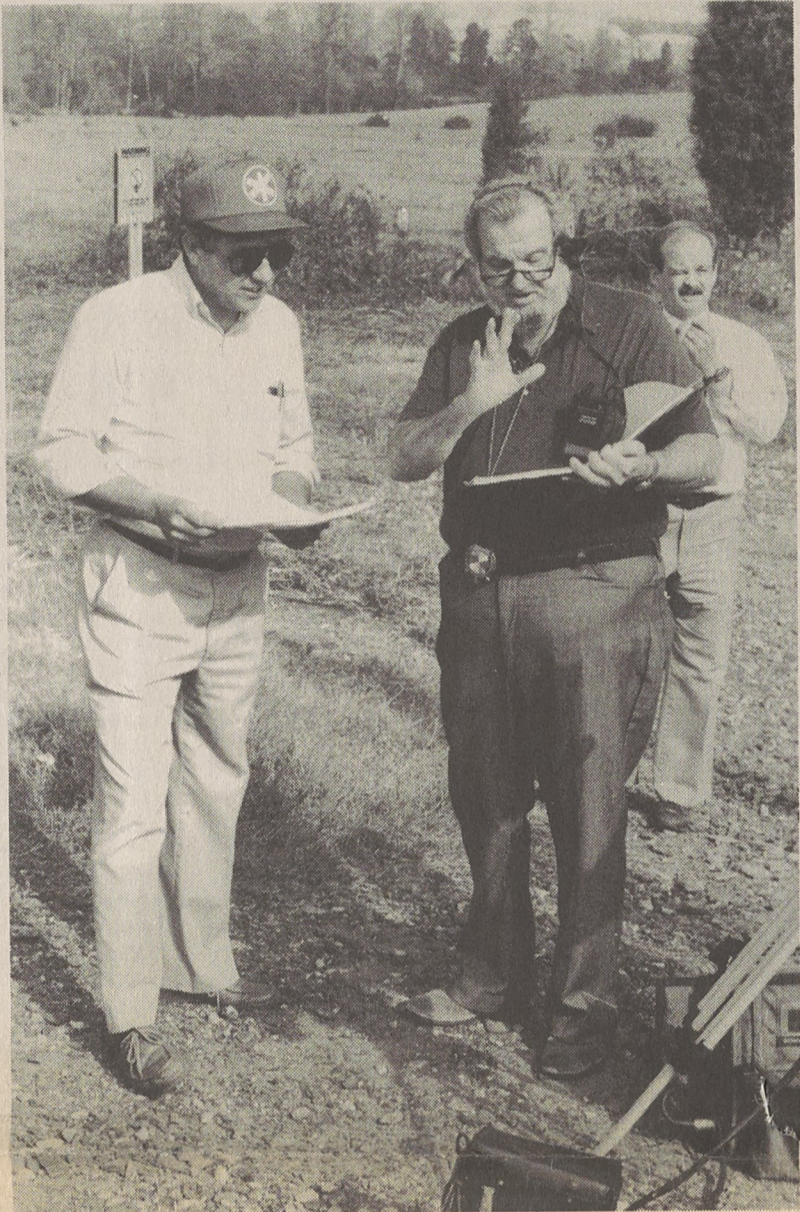
North School students were used for two hours Tuesday and two hours Thursday to shoot scenes of a school bus stranded on the tracks. Ms. Dratwick said Norfolk-Southern did not schedule any trains for the Kings Mountain stretch of tracks during the time the film was being shot, so there was no danger of children being in the path of an actual oncoming train.

The train-school bus crash scene was shot using model trains and school buses.

"Mr. Mickey of the School Transportation Department, and local school officials and bus personnel were great to cooperate with us on short notice," Ms. Dratwick said. "The Margrace and Archdale crossings were selected by Mr. Mickey, not because they are dangerous crossings but because they were good, clear crossings for shooting the film."

Actors were secured through an agency in Charlotte to play the part of bus drivers and the ghost, who died in an accident 10 years earlier. Actors who played bus drivers had to be certified as bus drivers by the Schools Transportation Division. Jennifer Lee of Charlotte played the little girl.

"This was a good experience for our children," said Kings Mountain Schools Superintendent Bob McRae. "We appreciate their parents for allowing them to take part in this, and we appreciate the cooperation of North Principal Joey Hopper and his staff. This will benefit schools nationwide as they train bus drivers in safety."



Jack Burney, Right, Discusses Next Scene With Bob Mickey...

**Committee Discusses Pay Policy Plans**

An ad-hoc committee met in open session at city hall last Tuesday at 1 p.m. to discuss personnel and pay policy plans which will be presented to city council at upcoming regular meetings.

Mayor Kyle Smith, the committee chairman, presided, with councilmen J.D. Barrett and Humes Houston present, along with City Manager George Wood, Personnel Director Charles L. Webber and Community Development Director Gene White.

The group reviewed hospitalization coverage for part-time employees; appeals to the job classification and pay plan; the percentage of dependent medical premiums to be paid by the city employees; and proposed personnel policies recommended by Municipal Advisors, Inc., the firm contracted by council to publish a personnel book.

Committee recommendations on some of the items will be

presented at the regular semi-monthly meeting of council Tuesday night at 7:30 p.m. Others will

be presented at later regular sessions, for discussion by the full council.

**PEGGY'S RESTAURANT**

415 North Piedmont Avenue - Kings Mountain, N.C.

•BREAKFAST •LUNCH •DINNER

Just Good Folks Serving Good Home Cooked Meals To Friends Like You

Phone 739-7361



**Subscribe To The Herald**

**HOW DO YOU GET PREMIUM HOME-OWNER'S INSURANCE AT A DISCOUNT? NO PROBLEM.**

Auto-Owners Homeowner Policy discounts do just that. There are a number of premium discounts you might qualify for, and they could reduce your costs by as much as 40 percent! Get broad homeowners coverage, from a reputable source—at the price you want. Just ask your "no problem" Auto-Owners agent about homeowner's discounts. It's no problem with Auto-Owners.

**WARLICK and HAMRICK ASSOCIATES**

106 East Mountain St. P.O. Box 579 Kings Mountain, N.C. 28086 Phone 739-3611



THE HISTORICAL **REID SCHOOL ALUMNI** FACULTY AND ASSOCIATE • AUXILIARY MEMBERS CONVENTION

The First Rehearsal of the Reid School Alumni Chorus will meet Saturday, November 6, at 11 AM at Mt. Pleasant Baptist Church.

609 East Ave., Belmont. All Reid School Alumni and descendants are eligible to participate.

The Following classes need to send their Alumni Names and Addresses to: P.O. Box 1164, Belmont, NC 28012.

CLASSES: 32, 34, 35, 38, 41, 43, 46, 47, 49, 50, 51, 52, 56, 59, 60, 62, 64, 66, 68-89.

\$50.00 Convention Registration Fee Offer EXPIRES Nov. 30, 1988.

**Farm-City Week Set**

Farm-City Week will be launched Tuesday with a breakfast at 7:30 a.m. by the Cleveland County Extension Service across from Cleveland Technical College, Post Road, Shelby.

Highlight of the event will be presentation of the Cleveland County Farm Family of the Year.

The event honors farmers and local farmers are planning to attend.

**CHICKEN STEW**

Antioch Volunteer Fire Department will sell chicken stew, hamburgers and hotdogs Saturday beginning at 11 a.m. at the fire department near Antioch Baptist Church. The public is invited.

**Subscribe To The Herald**

**THANKS!**

I would like to thank the voters of Gaston County for re-electing me Register of Deeds. I will continue to run this office in a professional and pleasant atmosphere.



**ALICE B. BROWN**

**REGISTER OF DEEDS**  
Paid Political Advertisement

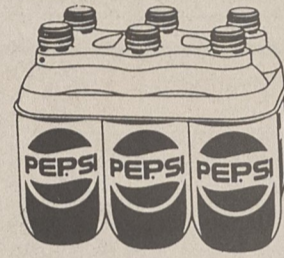
**RICK'S OLE' COUNTRY STORE**

ON CHERRYVILLE HIGHWAY

**BUD LITE \$11.99**  
IN SUITCASE



**PEPSI COLA 16 OZ. 6 PACK**



**\$1.99**

IN SUITCASES/PER CASE  
BUDWEISER 24 12 Oz. Cans **\$11.99**

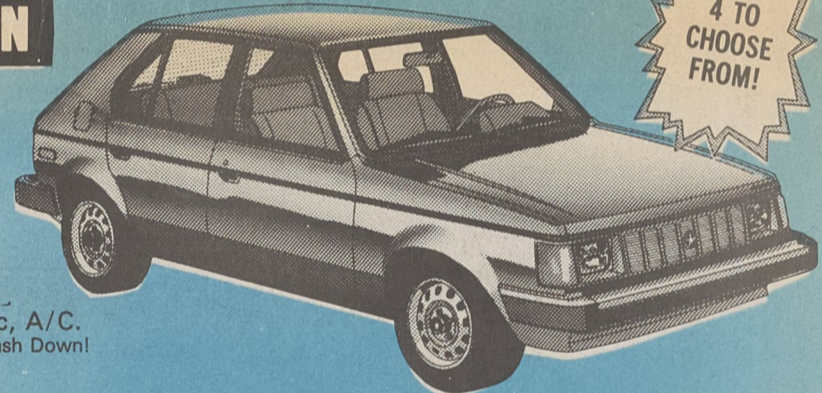
CIGARETTES AS LOW AS \$4.69 CARTON  
WINSTONS - VANTAGE - SALEMS AS LOW AS \$7.39 CARTON (While Supply Last)

**SEE RICK AT OLE COUNTRY STORE FOR THE FATTEST FATBACK IN TOWN!**

**SO MUCH. FOR SO LITTLE.**

**1989 HORIZON**

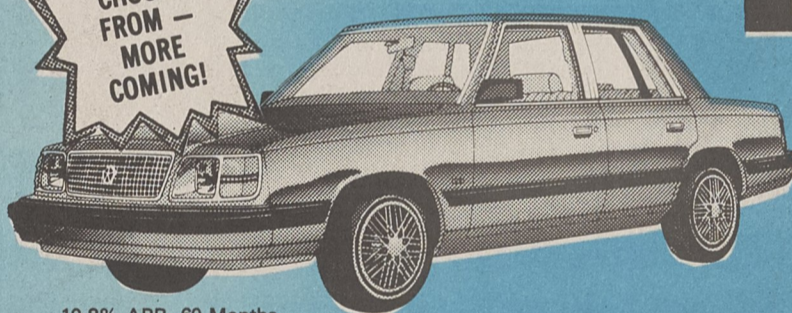
**\$159 PER MONTH**



4 TO CHOOSE FROM!

Well Equipped, Automatic, A/C. 10.8% APR, 60 Months, \$900 Cash Down!

2 TO CHOOSE FROM - MORE COMING!



**1989 RELIANT**

**\$179 PER MONTH**

Well Equipped, Automatic, AC.

**1988 SUNDANCE (4 DR)**

**\$159 PER MONTH**



Lease Car. 9.9% APR, 60 Months, \$500 Cash Down!

**1989 SUNDANCE**

**\$199 PER MONTH**

Flip Sunroof, Cassette, AC, Automatic. 10.8% APR, 60 Months, \$900 Cash Down!

**1989 VOYAGER PLYMOUTH**

**\$229 Per Month**



\$1,355.00 Down Payments Figured For 72 Months At 13.25% APR

**SO MUCH. FOR SO LITTLE. ONLY AT**

**BLANTON CHRYSLER-PLYMOUTH**

Dean Blanton  
Bill Smith  
John Rogers

**484-2277**  
306 E. DIXON BLVD. - SHELBY, N.C.

Bob Dorsey  
Jimmy Blanton, Jr.  
Renee Condrey



**Siemens - Starkey ALL IN THE EAR HEARING AIDS**

Full Ear \$400.00  
Canal Aid \$625.00  
Test Included None Higher

**AFFORDABLE HEARING AID CENTER**

333 E. MAIN LINCOLNTON 732-4315  
ALSO AT: Hickory Morganton Lenoir N. Wilkesboro Statesville