



**EAST SCHOOL GOOD CITIZENS**-Pictured are Good Citizens for the third six weeks grading period at East School. Front row, from left, Trey Reid, Nekisha Brown, Antwan Adams, Stacey Elgin and Rufus McCullough. Middle row, from left, Tracie Landenberger, Jovonna Holman, Amy Ramsey, Larry Wright, Sarah Gordon, Brian Ladd, and Sara Huskins. Back row, from left, Billy Johnson, Josh Moore, Corey Leach, Angela Young, Crystal Lanier, Sharon Mayberry, and Riley Nolen. Not pictured, Darice McSwain, Britt Lee and Kevin Webb.

## KM Schools Lunch Menus

(February lunch menus for Kings Mountain District Schools).

Wed., Feb. 1 - Meat loaf or toasted cheese sandwich, creamed potatoes, breaded okra, cole slaw, hot rolls.  
 Thurs., Feb. 2 - Pizza burger, tossed salad, breaded squash, pears.  
 Fri., Feb. 3 - Hotdog with chili on bun, cole slaw, french fries, trail mix.  
 Mon., Feb. 6 - Fiestada, tossed salad, french fries, cherry cobbler.  
 Tues., Feb. 7 - Country fried steak or ham and cheese sandwich, rice and gravy, green beans, beets, applesauce, hot rolls.  
 Wed., Feb. 8 - Corn dog or toasted cheese sandwich, vegetable soup, fresh orange, applesauce cake.  
 Thurs., Feb. 9 - Macaroni and cheese or sloppy joe in bun, cole slaw, breaded okra, apple, hot biscuit.  
 Fri., Feb. 10 - Cheeseburger on bun, lettuce and tomato, french fries, purple plums.  
 Mon., Feb. 13 - Hotdog with chili on bun, cole slaw, french fries, vegetarian beans.  
 Tues., Feb. 14 - Egg salad sandwich or spaghetti and meat sauce, tossed salad, whole white potatoes, pineapple chunks, french bread.  
 Wed., Feb. 15 - Chili burger in bun, cole slaw, tater tots, apple/honey crisp.  
 Thurs., Feb. 16 - Oven fried chicken or corn dog, creamed potatoes, orange, hot rolls.  
 Fri., Feb. 17 - Fish sandwich, cole slaw, french fries, fruit.  
 Mon., Feb. 20 - BBQ on bun,

BBQ slaw, whole white potatoes, fruit.  
 Tues., Feb. 21 - Lasagna or bologna and cheese sandwich, fried okra, apple, hot roll.  
 Wed., Feb. 22 - Pizza, tossed salad, mixed vegetables, applesauce.  
 Thurs., Feb. 23 - Toasted cheese sandwich, vegetable and beef soup, fresh orange, snow cookie.  
 Fri., Feb. 24 - Sliced ham or corn dog, potato salad, green beans, pineapple upside down cake.  
 Mon., Feb. 27 - Manager's choice.  
 Tues., Feb. 28 - Manager's choice.  
 \*1/2 pint of milk offered with each meal.

(February breakfast menus for Kings Mountain District Schools).

Wed., Feb. 1 - Cheese toast and apple juice.  
 Thurs., Feb. 2 - Cinnamon toast and assorted juices.  
 Fri., Feb. 3 - Buttered pancakes with maple syrup, chilled applesauce.  
 Mon., Feb. 6 - Doughnut, fruit juice.  
 Tues., Feb. 7 - Ham biscuit, fruit juice.  
 Wed., Feb. 8 - Corn flakes and orange juice.  
 Thurs., Feb. 9 - Oatmeal, apple juice.  
 Fri., Feb. 10 - Sausage biscuit, orange juice.  
 Mon., Feb. 13 - Cheese toast, grape juice.  
 Tues., Feb. 14 - Assorted cereal, apple juice.  
 Wed., Feb. 15 - Sausage biscuit,

applesauce.  
 Thurs., Feb. 16 - Hot grits, biscuit, orange juice.  
 Fri., Feb. 17 - Cinnamon toast, applesauce.  
 Mon., Feb. 20 - Choice of cereal, orange juice.  
 Tues., Feb. 21 - Cheese toast, applesauce.  
 Wed., Feb. 22 - Buttered pancakes with juice, apple juice.  
 Thurs., Feb. 23 - Scrambled eggs, buttered grits, toast, orange juice.  
 Fri., Feb. 24 - Manager's choice.  
 Mon., Feb. 27 - Manager's choice.  
 Tues., Feb. 28 - Manager's choice.  
 \*1/2 pint milk served with each meal.

### KM Students On L-R Dean's List

Two Kings Mountain students-Thad Christopher Lutz and Charles Tracy Bolin-have been named to the dean's list for the 1989 fall semester at Lenoir-Rhyne College in Hickory. Both are seniors and were among 301 L-R students named to the honor roll. According to Lenoir-Rhyne registrar Kermit Turner, the students qualified for the dean's list by com-

pleting a 3.4 grade point average out of a possible 4.0 while carrying a course load of at least 12 semester hours. They made no grade lower than a "C". Lenoir-Rhyne is a four-year liberal arts college affiliated with the North Carolina Synod of the Evangelical Lutheran Church in America.

### KM Students Named Who's Who

The 1988 edition of Who's Who Among Students in American Junior Colleges will include the names of 64 students from Cleveland Community College who have been selected as national outstanding campus leaders. Selection of students for this honor is based on their academic achievement, ser-

vice to the community, leadership in extracurricular activities, and potential for continued success. Students selected from Kings Mountain were Robert L. Burns, Jenny L. Camp, Russell W. Doherty, Deanna V. Lovelace, Linda A. McClain, Jeffrey S. Patterson, Nancy A. Thompson, Patricia L. Ware and Judy E. Wiggins.

### Advising Session Set In Cherryville

CHARLOTTE - UNC Charlotte's Office of Extension and Continuing Education has scheduled an advising session for teachers and schools personnel at Cherryville Junior-Senior High School from 4 to 6 p.m. Wednesday, Feb. 8. The session is for individuals interested in taking courses for certifi-

cation or degrees. In addition, the Millers Analogies Test will be offered at the same location for students seeking admission to UNC Charlotte's graduate program at 4 p.m. Wednesday, Feb. 1. For more information, call 547-2424 from 8 a.m. to 5 p.m. weekdays.

## Scholarship Established

Mrs. Winifred H. Lindsay of Rutherfordton has established the David and Winifred Herbert Lindsay Endowed Scholarship Fund at Gardner-Webb College, the second largest endowed scholarship in the history of the college.

The Scholarship, established by Mrs. Lindsay in memory of her husband, expresses the commitment of the couple to Christian higher education and to the educational needs of residents of Rutherford and surrounding counties.

Mrs. Lindsay, a well-known philanthropist from Rutherfordton, has been a friend of Gardner-Webb for a number of years. She has been instrumental in many church, civic and educational projects for Rutherfordton and surrounding areas through her financial backing and support. She has a keen sense of concern for the well-being of those who are less fortunate than herself.

Joann Lutz, director of planned giving at Gardner-Webb says, "Mrs. Lindsay has a deep concern for the education of our youth and her heart goes out especially to those who want an education but need financial help in order to acquire it."

The fund will provide financial assistance to worthy and needy full-time students at Gardner-Webb, with preference given to students from Rutherford County and surrounding counties in North Carolina.

"Gardner-Webb College and Rutherford County have a very close relationship," says College president, Dr. M. Christopher White, noting that for a number of years Rutherford County has been the second largest provider of the College's students.

"Gardner-Webb College is, in fact, Rutherford County's senior college," Dr. White says, adding, "The scholarship monies made available through Mrs. Lindsay's gift will make it possible for students to come here perpetually."

Contributions for the open-ended

fund were initiated by Mrs. Lindsay. The scholarship will be permanently endowed, with the annual interest available for scholarship awards. Additional contributions may be made at any time by Mrs. Lindsay or other friends of Gardner-Webb.

The scholarship is the single largest endowed scholarship made by a living donor to Gardner-Webb.

"By endowing a scholarship, the Lindsay name and gift will forever be a part of Gardner-Webb," says Mrs. Lutz. "This is, in my estimation, the wisest use of one's money."

### G-W Scholarship

Mr. and Mrs. Robert R. Forney of Shelby have established the Robert R. and Jessie I. Forney Endowed Scholarship-Loan at Gardner-Webb College.

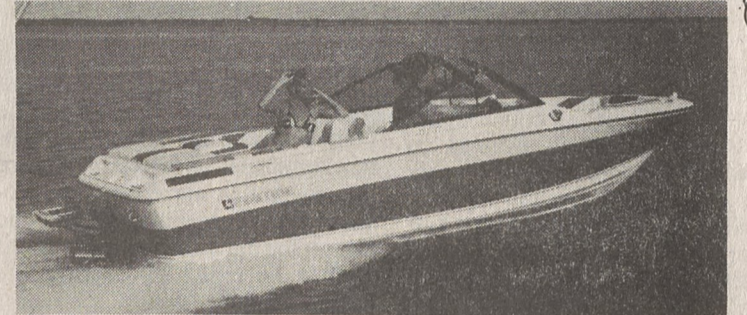
The scholarship, restricted to nursing students who intend to work in a health facility in Cleveland County following graduation, was established with an initial \$10,000 grant.

Recipients of the scholarship will be obligated to work at a hospital in Cleveland County, with preference given to Cleveland Memorial Hospital. Recipients will work one year for each year the scholarship was received.

If the scholarship recipient fails to complete the nursing course of study, to become licensed by the state of North Carolina or declines employment at a Cleveland County Hospital, the full amount of the scholarship loan must be repaid to Gardner-Webb College. However, if the student applies for employment at all Cleveland County hospitals and is not offered employment, all obligations of the loan and repayment will be cancelled.

Mr. Forney, who is a 1931 graduate of Gardner-Webb and is the retired president of Lily Mills Co., has served on the board of trustees at Cleveland Memorial Hospital. He has also served on the Winston-Salem Medical Center Board, which governs Bowman Gray and Baptist Hospitals.

### Ebbtide — Built To Excite!



**SALE — 1989 17' MONTEGO \$9995<sup>00</sup>**

W/130 HP MerCruiser

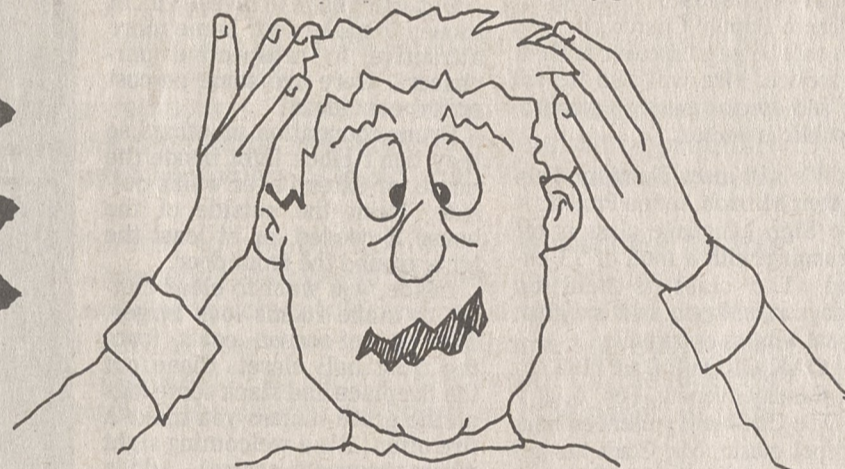
This may be the best deal you'll see all year! HURRY!

### NEW HOPE MARINE

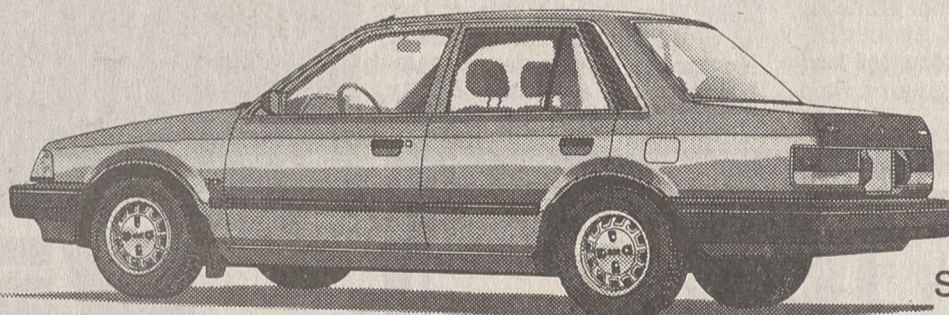
S. NEW HOPE ROAD — GASTONIA, N.C.  
 (704) 824-3381 • (704) 376-5107

## THE ALL NEW SHELBY VOLKSWAGEN MAZDA "MADNESS SALE"

SHARPEST PENCIL AROUND!



**HURRY, BEFORE WE COMMIT THE SALES MANAGER HE HAS GONE MAD, MAD, MAD**

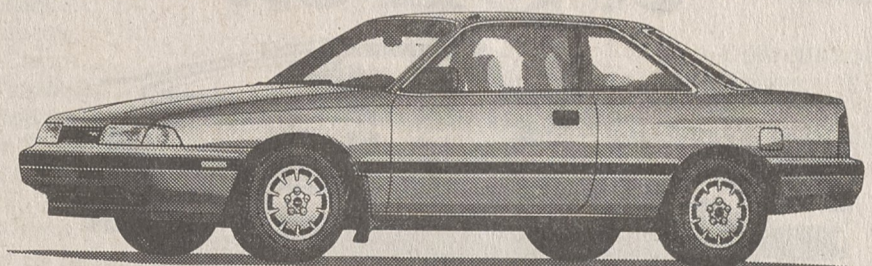


**1989 323's \$400 FACTORY REBATE**  
 SEVERAL TO CHOOSE FROM!

**UP TO \$1000 DEALER REBATE/TOTAL \$1400 REBATE HE MIGHT EVEN BE INSANE!!**

1989 MX-6's

**\$100 OVER DEALER INVOICE**



AWARD WINNING SERVICE NO. 1 RATED SERVICE DEPARTMENT OUT OF 18 DEALERS. BASED ON CSI REPORT.

THE ALL NEW . . . .

## SHELBY VOLKSWAGEN MAZDA INC.

HWY 74 BY PASS EAST SHELBY

SHELBY, N.C.

PHONE 704-482-6771

**"THE KING" LIVES!**

LOVE ME TENDER  
 Elvis Presley's electrifying screen debut!

AMERICAN MOVIE CLASSICS

Jan. 27th  
 5 PM-9PM-1AM  
 Channel 13

Cherryville  
 435-5449  
 Gaston Co.  
 824-9856

Kings Mtn.  
 739-0164

JONES INTERCABLE, INC.