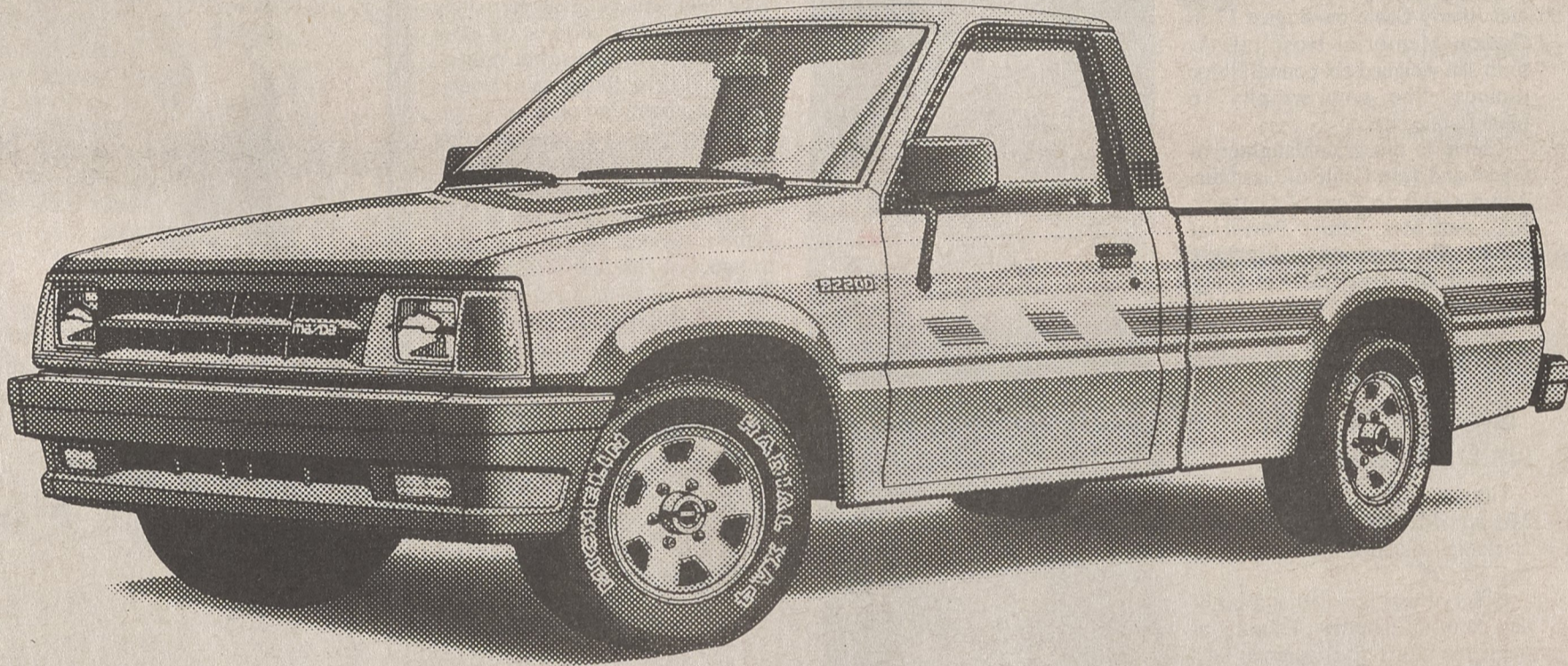


**TAGGED FOR
\$750 CASH BACK
FROM MAZDA****
NOW THROUGH APRIL 1!



A GREAT TRUCK.

To be rated #1 in customer satisfaction means being a lot of good things to a lot of different people. And rugged, reliable Mazda trucks have earned this lofty distinction not once, not twice, but three straight years! Right now, during Mazda White Tag Days, you can get a brand new Mazda truck AND \$750 cash back from Mazda.** Which means our trucks should be more popular than ever!

A GREAT WARRANTY.

**36 MONTH-
50,000 MILE
"BUMPER
TO
BUMPER"
WARRANTY**

You can't get to be as popular as Mazda trucks have become without offering a great warranty. And Mazda offers the best warranty in the truck business... our 36-month, 50,000 mile no-deductible "bumper-to-bumper" warranty***... proof that we stand behind the trucks we sell.

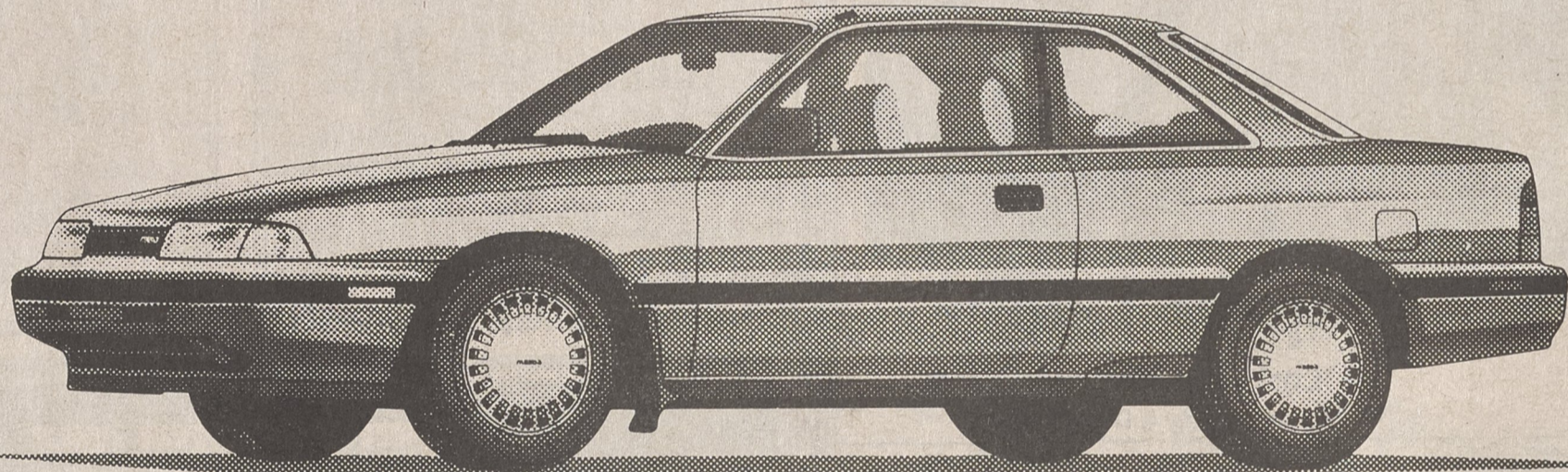
A GREAT OFFER.

Simply go to your Mazda dealer's, pick out ANY new Mazda truck, and you'll get \$750 cash back from Mazda. Or, you can apply the \$750 to your down payment immediately! But you'd better hurry. This cash back offer is only good until April 2.



MAZDA WHITE TAG DAYS! WE'VE GOT SAVINGS TAGGED FOR YOU!

*J.D. Power & Associates 1986 and 1987 Compact Truck CSI and 1988 Light Duty Truck CSI for customer satisfaction with product quality and dealer service.
**Allow 30 days for disbursement of check. Offer ends April 2, 1989. Dealer participation may affect final negotiated price.
***See dealer for limited warranty details.



**36 MONTH-
50,000 MILE
"BUMPER
TO
BUMPER"
WARRANTY**

The sporty, red-hot 1989 Mazda MX-6 DX. It's *already* priced \$2500 less*** than the Honda Prelude S and \$1850 less*** than the Nissan 240SX XE! And right now, during

Mazda White Tag Days, you can get an even *better* deal! That's because

factory-to-dealer incentives can save you hundreds of dollars on *any* MX-6 in stock! And you don't just get a great deal. You also get a great warranty...

The Mazda 36-month, 50,000 mile no-deductible "bumper-to-bumper" warranty.** But there is one catch. When March ends, the factory-to-

dealer incentives end. So you'd better hurry to your Mazda dealer's!



*Factory-to-dealer incentives end March 31, 1989. Dealer participation may affect final negotiated price.
**See dealer for limited warranty details.
***Based on MSRP's. Dealer prices may vary.

SHELBY Mazda



**Highway 74 East (Bypass)
Shelby, NC • Phone 482-6771**