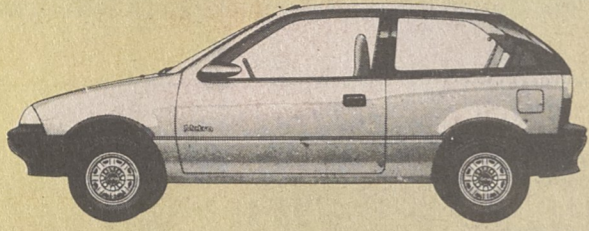


1989 GEO METRO



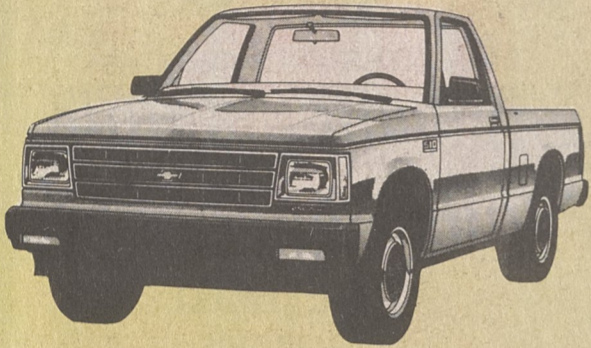
2.9% APR or \$400 Cash Back

Two Door Hatchback, 5-Speed, 55 Miles Per Gallon, Plus Factory Sunroof.

Drive Away Price **\$6500** or **\$124.99***

to finance 5896.95 for 60 months with only 603.65 down payment cash or trade at 9.9 APR on approved credit. Plus NC Tax, Tag, 29.00 Ad Fee

1989 S-10



5-Speed, Rear Step Bumper, 1000 LB. Payload. Stock# 2490

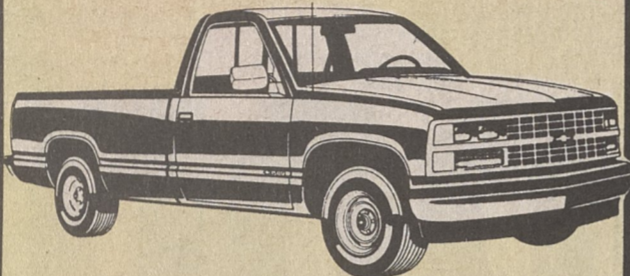
2.9% APR or CASH BACK

Drive Away Price **\$7950** or **149.99***

Over 80 S-10 Trucks In Stock

to finance 7075.72 for 60 months with only 874.28 down payment cash or trade at 9.9 APR on approved credit. Plus NC Tax, Tag, and 29.00 Adm. Fee.

1989 FULL SIZE 2WD & 4X4 C1500



CHEYENNE, SCOTTSDALE, SILVERADO

2 Wheel Drive, 4 Wheel Drive, Short Wheel Base, Long Wheel Base

Over 25 Full Size Trucks In Stock All With

FREE AUTOMATIC TRANSMISSION

2.9%

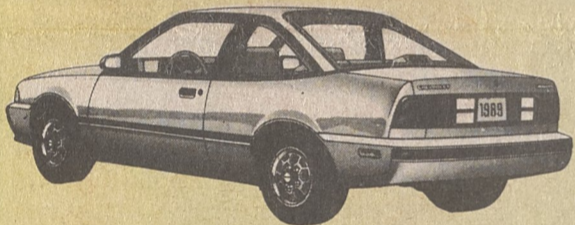
or up to

1000

GMC FINANCING

CASH BACK

1989 Chevrolet CAVALIER



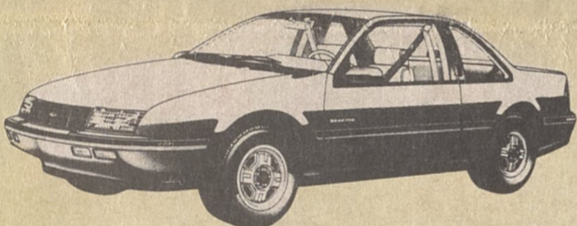
Two Door, Sports Coupe, A/C, 5-Speed, Tinted Glass, Stereo Clock, Power Steering and Brakes, Cloth Interior. Stock# 2773

2.9% APR or \$300 CASH BACK

Drive Away Price **\$8995** or **\$174.99***

to finance 8225.08 for 60 months with only 739.92 down payment cash or trade at 9.9 APR on approved credit. Plus NC Tax, Tag, and 29. Adm. Fee.

1989 Chevrolet BERETTA

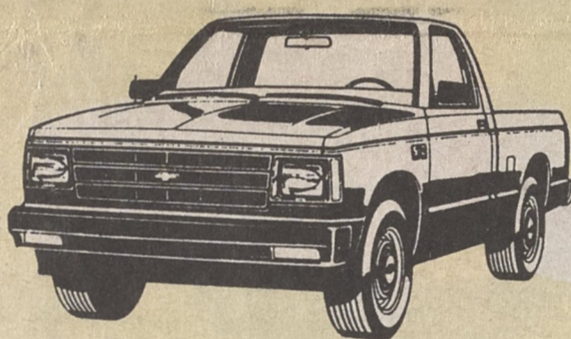


A/C, Gray Cloth Interior, Stereo, Radio, Auxiliary Lighting. Stock# 2436

Drive Away Price **\$10,900***

PLUS **\$600** Cash Back or **2.9% APR**

1989 S-10 TAHOE



Short Wheel Base, 4.3 V-6, Automatic, White Letter Tires, A/C, Sliding Rear Window, Cassette, Two-Tone Paint, Power Steering and Brakes. Stock# 2761

Drive Away Price **\$10,995***

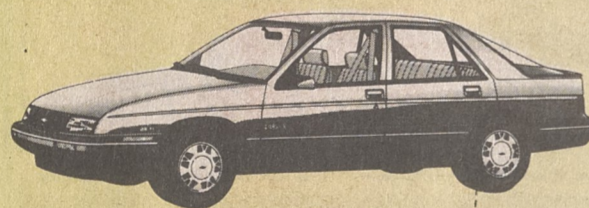
After \$500 Rebate
After \$750 Cash Back or 2.9% APR

THINK THINK

THINK ABOUT BIG DISCOUNTS, AND GREAT DEALS. THEN ADD 2.9% APR OR REBATES UP TO 1000. IT MAKES FOR THE BEST TIME IN HISTORY TO BUY A NEW CAR. WE'RE GOING ALL OUT TO CONTINUE SETTING SALES RECORDS, PLUS PROVIDE OUTSTANDING SERVICE AND TAG HIGHEST LEVEL OF CUSTOMER SATISFACTION

24m-2.9%, 36m-5.9%, 48m 6.9%, 60m-9.9%
*JUST ADD NC TAX, TAG AND \$29.10 ADM. FEE

1989 Chevrolet CORSICA

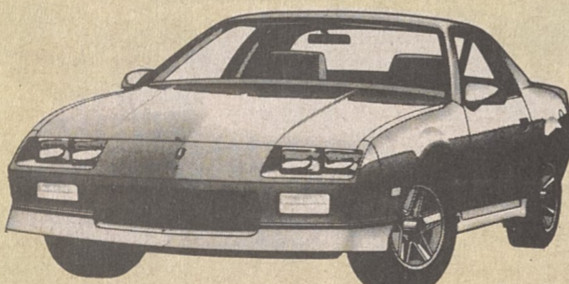


V-6, Automatic, A/C, Rear Defogger, Cassette Tape, Cruise, Tilt, Intermittent Wipers. Stock# 2339

Drive Away Price **\$11,695***

PLUS **\$600** Cash Back or **2.9% APR**

1989 Chevrolet CAMARO

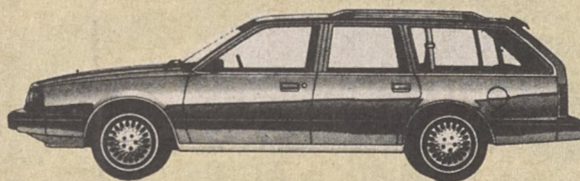


Automatic, T-Tops, A/C, Cassette, Cruise, Power Locks, Tilt. Stock# 2892

Drive Away Price **\$12,995***

PLUS **\$1000** Rebate or **2.9% APR**

1988 Chevrolet CELEBRITY WAGON

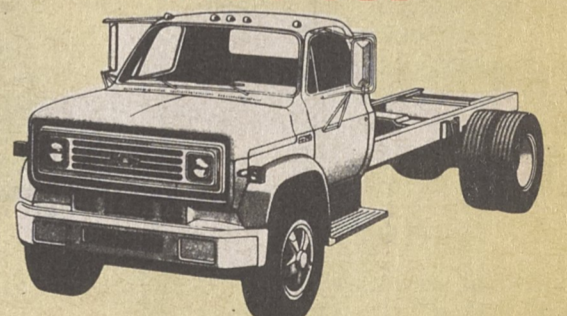


Company Executive Demo, Fully Loaded, Solid Dark Blue, Dark Blue Cloth Interior, Power Windows, Locks and Seats, Tilt, Cruise. Stock# 2084

Was \$16,406
Drive Away Price **\$13,500***

Plus \$600 Cash Back or 2.9% APR

1989 C-60 Medium Duty TRUCK



16,000 LB. GVW, 5,000 LB. FRONT AXLE, 8,000 LB. FRONT SPRINGS, 11,000 LB. REAR SPRINGS. V-8 Gas, 5-Speed, 2-Speed Rear Axle, Wheel Bases Available 203, 179, 167, Perfect for Role Back Dump-Body and City Delivery.

Retail \$23,289
Drive Away Price **\$15,000***

CARTER CHEVROLET

Mark Carter
Mark Johnson
Morris Ramsaur
Carl Bell

482-4341

200 WEST DIXON BLVD., SHELBY

482-4341

Ray Walker
Rick Philbeck
Joe Hamrick
Thomas Hester

*JUST ADD N.C. TAX AND \$29.10 ADM. FEE