

# Lake Not Open For Swimming

Warm weather has brought out the fishermen and boats to Moss Lake but Lake Officer Phil Witherspoon reminds that swimming season doesn't open until the first weekend in May.

Kings Mountain Police, who patrol the lake, this week cited several people for improper swimming, drinking alcoholic beverages and improper safety equipment. Police warn that all violators of city policies regarding the lake will be cited.

Lake hours are extended with daylight savings time, which began

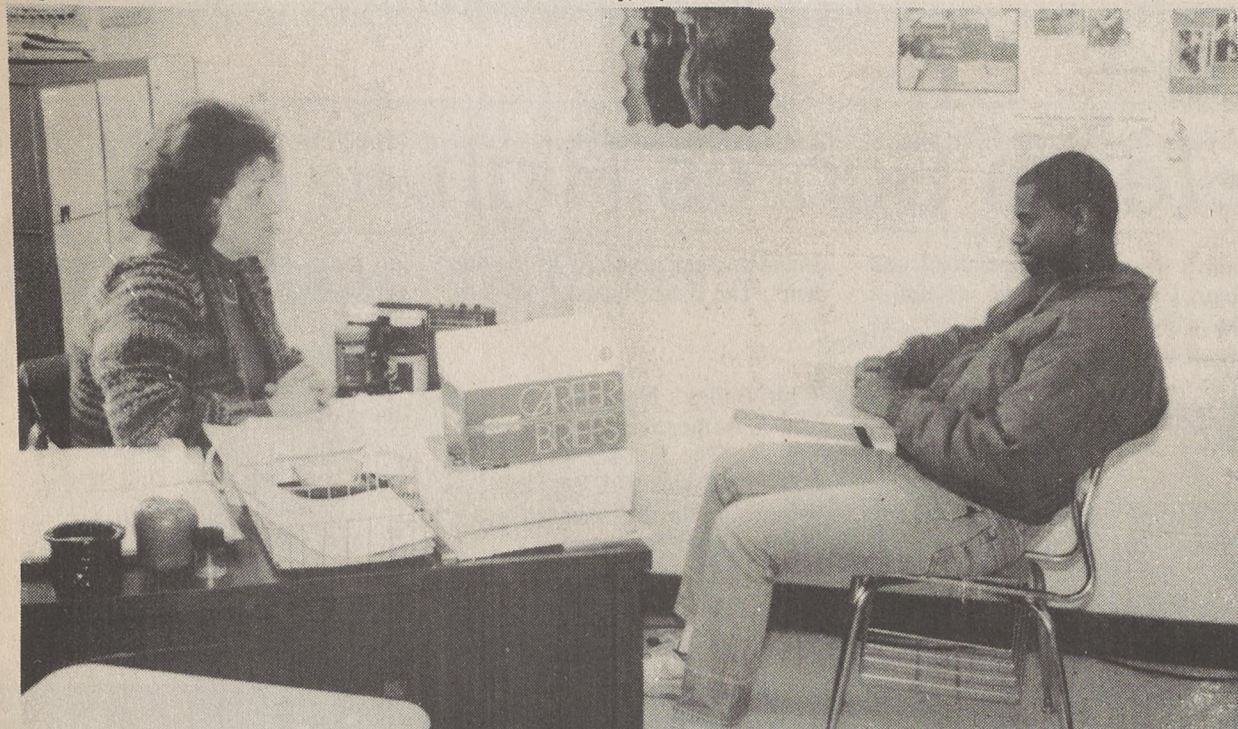
Sunday, but swimming doesn't begin until the first weekend in May and only in areas marked for public swimming, said Witherspoon. In May, boaters and fishermen can come to the lake on weekends between 10 a.m. and 10 p.m. and the beach and concession stands will be open from 11 a.m. until 5 p.m. on weekends. Now, boaters and fishermen can come to the lake on weekends between 10 a.m. and 8 p.m.

Work on improvements to the public beach area is near completion. The work was started when the lake level was dropped so repairs could be made at the lake's spillway. Included in the improvements are extension of a concrete retaining wall, from the beach entrance to the boating area, to cut down on erosion; construction of a boat docking pier; and extension of boat ramps and dredging of the swimming area. Paving work, installation of guardrails, fencing and

lighting are also part of the project which has been conducted over the past four to five months by city labor. The cost of materials was estimated at \$35,000.

## SELF HOME DAY CARE

Now accepting applications for children between the ages of 5 and 10 years old. Registered with the State, and opened 5 years. Quality Care, Hot Meals, Field Trips, and other planned activities during the summer months. We provide morning and afternoon care during the school year. Reasonable rates!! Please call Mrs. Self at 739-2914 or come by 300 Fulton Street, Kings Mtn.



Derrick Byrd listens as JTPA Counselor Dianne Hollifield explains the JTPA program.

# KM Job Training Program Provides Network Of People

(This is eighth in a series of twelve articles spotlighting opportunities in each of the Vocational Educational programs offered in Kings Mountain.)

There is an agreement among education and employment concerning the need for better integration among vocational education, secondary education, and employment training programs. This makes us aware that students need to be served by a network of people. Our vocational program at Kings Mountain High School does an excellent job in providing this network.

JTPA programs can also be an important link in this integration process and can foster a relationship that will effectively serve JTPA eligible youth.

The Job Training Partnership Act (JTPA) enacted in 1982, provided funds for the operation of programs designed to serve disadvantaged/handicapped students and potential school dropouts in the junior and senior high schools. These programs provide educational and employment skills training in order to assist eligible youth in a successful transition from school to the world of work while they complete high school.

Here at Kings Mountain Senior High we currently have three JTPA programs in operation: Pre-employment Skills Training, Entry Employment Work Experience Activity, and Institutional Skills Training/Principles of Technology.

Pre-employment Skills Training offers up to two hundred hours of counseling, employment training, and remedial education (if needed) to eligible youth. During the counseling session, services such as interest and career assessments are administered competencies for specific employment skills are taught, and screening for appropriate job placement are offered to the students. In providing these activities and instruction, along with supportive services directly related to the needs and problems of the participant, the goal is to keep the youth in school, reduced the dropout rate, and better prepare them for the labor market.

Entry Employment Work Experience Activity is designed for youth who have completed the pre-employment skills training and have not been involved in regular employment for more than 250 hours within the

last 14 weeks. Youth must be enrolled in a secondary school or an institution offering a certified high school equivalency program. The Entry Employment Work Experience program in Kings Mountain District Schools is designed to provide 5 high school juniors or seniors hands-on job training in the public sector. The goal is to provide the participant with experience on a job and to develop good work habits and basic work skills in order to better prepare them to compete in the labor market. Participation is limited to a maximum of 20 hours per week during the school year.

The JTPA Principles of Technology Program is designed to instruct and train youth in technical skills that will assist them in assuming entry level positions in technically-oriented industries, and/or securing additional instruction and training in post-secondary institutions or both. Students are tenth, eleventh, or twelfth graders whose interest and aptitudes demonstrate a potential for success in a technical training program. This program is usually a two-year course that contains both academic instruction and hands-on laboratory experiences. The course of study is presented in fourteen units with each unit typically having twenty-six sessions. Each unit presents one technical principle as it applies to the four energy systems.

Each summer the Summer Youth Employment Program is in operation at Kings Mountain High. This program serves approximately 32 students with a combination of work experience and if needed classroom training. The purpose of this project is to provide participants with experience on a job, develop occupational opportunities, while also providing them with math and English education and vocational skills necessary for the achievement of a high school diploma.

Evaluation studies indicate that students served by JTPA programs remain in school, attend school more regularly, earn more units of high school credit, and pass the North Carolina Competency Test more often than a comparable group of students. Keeping these results in mind, one can see the link between JTPA and secondary school success. Therefore, JTPA's role in Vocational Education is vital in providing the network of services that our students need.

## Miss Jenkins Senate Page

Raleigh — Students from across the state are appointed each week to serve a page in the Senate of the North Carolina General Assembly. As pages, students are given a variety of responsibilities during their one-week visit to Raleigh.

Their staff committee meetings, manage senate offices and attend sessions daily to assist senators and the legislative staff.

Recently, Mary Joyce Jenkins, a junior at East Rowan Senior High School, completed on week of ser-

vice as a page. Her parents are Dr. and Mrs. Joel P. Jenkins Jr. of Salisbury.

Jenkins was sponsored by Sen. Ollie Harris of Kings Mountain. All pages are appointed by Senate President Pro Tempore Henson P. Barnes.

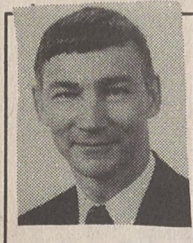
### ON DEAN'S LIST

Shane Farris, son of Mr. and Mrs. Paul R. Farris of Route 2, Kings Mountain, was named to the Dean's List for the 1988 fall semester at the University of North Carolina at Charlotte School of Engineering. He is a graduate of Kings Mountain High School.

## Check Nationwide for all your insurance needs.

- life insurance
- fire insurance
- auto insurance
- homeowners
- education
- mortgage
- accident and sickness
- retirement
- business

Whatever your needs, find out how Nationwide can protect you. Call today.



JOHN C. CAVENY, JR.  
608 W. King St.,  
Kings Mountain 739-3953

## NATIONWIDE INSURANCE

Nationwide is on your side  
Nationwide Mutual Insurance Company  
Nationwide Mutual Fire Insurance Company  
Nationwide Life Insurance Company  
Home office: Columbus, Ohio  
Nationwide® is a federal service mark of  
Nationwide Mutual Insurance Company



SELF-CONTAINED CAR CD PLAYER WITH TURNER & 20 WATT AMPLIFIER



DEH-66

IT'S ON SALE NOW!

**\$499.99**

REGULAR PRICE \$699.99

HURRY LIMITED QUANTITIES

NOW IN STOCK: FULL LINE OF 1989 PIONEER CAR STEREO SYSTEMS

- SALES & SERVICE
- CUSTOM INSTALLATIONS

Authorized Pioneer Dealer **NEW to Kings Mountain** Complete Car Stereo Systems

"Pioneer Premier Installation Specialist"

**MOBILE VIBRATIONS**

East Gold Street (Lower Level of Western Auto Building Facing City Hall)  
Contact: Greg Smith, Manager • 739-7454

\* Full Financing Available Upon Pre-Approved Credit \*



## A shorter drive can mean a longer life.

Why? Because we are now part of the Carolinas Heart Emergency Network.

This network of hospitals throughout the state was created to help treat heart attack victims as quickly as possible... to limit permanent damage to heart muscle... and to improve survival rates.

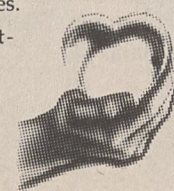
The first hours of a heart attack are critical. Treatment must be prompt... using state-of-the-art cardiac care technology. Our staff utilizes the most advanced

clot-dissolving drugs available. And we have a 24-hour link with specialists of the Carolinas Heart Emergency Network.

Remember, early symptoms of a heart attack call for quick response. The kind of response now available right here... a short drive away.

For more information on the Carolinas Heart Emergency Network, just call us.

KINGS MOUNTAIN HOSPITAL  
739-3601



### CAROLINAS HEART EMERGENCY NETWORK

Alexander County Hospital, Taylorsville, North Carolina • Anson County Hospital, Wadesboro, North Carolina • Blowing Rock Hospital, Blowing Rock, North Carolina • Caldwell Memorial Hospital, Lenoir, North Carolina • Carolinas Heart Institute, Charlotte Memorial Hospital & Medical Center, Charlotte, North Carolina • Charles A. Cannon, Jr. Memorial Hospital, Banner Elk, North Carolina • Cleveland Memorial Hospital, Shelby, North Carolina • Crawley Memorial Hospital, Boiling Springs, North Carolina • Davis Community Hospital, Statesville, North Carolina • Elliott White Springs Memorial Hospital, Lancaster, South Carolina • Grace Hospital, Morganton, North Carolina • Kings Mountain Hospital, Kings Mountain, North Carolina • Lincoln County Hospital, Lincolnton, North Carolina • Orthopaedic Hospital of Charlotte, Charlotte, North Carolina • Richmond Memorial Hospital, Rockingham, North Carolina • Rutherford Hospital, Rutherfordton, North Carolina • Sloop Memorial Hospital, Crossnore, North Carolina • Stanley Memorial Hospital, Albemarle, North Carolina • Union Memorial Hospital, Monroe, North Carolina • University Memorial Hospital, Charlotte, North Carolina • Valdesse General Hospital, Valdesse, North Carolina • Watauga County Hospital, Boone, North Carolina