



NEW WILDLIFE RESOURCES COMMISSION

Eleven of the 13 new members of the N.C. Wildlife Resources Commission pose outside the State Capital Building after taking their oaths of office in a ceremony with Gov. Jim Martin. From left are: Maughan Hull Jr. of Pasquotank County, (District 1); R.G. Sowers III of Pender County, (District 2); Richard P. Budd of Davie County, (District 7); Stuart Paine of Moore County, (District 6); Eugene Price of Wayne County, (District 3); Joseph Neisler Jr. of Cleveland County, (District 8); Robert Barnhill Jr. of Edgecombe County, (at-large); Richard Jarrett of Alamance County, (District 5); Susan L. Allen of Wake County (appointee of House Speaker Joe Mayretic); Ferrell Blount III of Pitt County, (at-large); Dr. William H. McCall of Asheville, (District 9).

Recreation Events Slated

Schedule of activities at the Kings Mountain Parks and Recreation Department:

Thursday - aerobics, 8:30-9:30 a.m.; kids open gym (hotshot competition, whiffle ball, basketball, game room, obstacle course, homerun derby) 3-5 p.m.; senior aquacise 1:45-2:40 p.m.; aerobics 4-5 p.m.; basic education 5-9 p.m.; high school 5-9 p.m.; aerobics 6:30-7:30 p.m.

Friday - aerobics, 8:30-9:30; food bank 2-4 p.m.

Saturday - open gym 11 a.m.-3 p.m.

Monday - aerobics 8:30-9:30; adult open gym 1:30-4:30; food bank 2-4 p.m.; aerobics 4-5 p.m.; basic education 5-9 p.m.; high school 5-9 p.m.; aerobics 6:30-7:30 p.m.; table tennis 6:30-8:30 p.m. Kung Fu 7-8:30.

Tuesday - aerobics 8:30-9:30; kids open gym (hotshot, whiffle ball, basketball, game room, obstacle course, homerun derby) 3-5 p.m.; senior aquacise 1:45-2:40; aerobics 4-5 p.m.; basic education 5-9 p.m.; high school 5-9 p.m.; aerobics 6:30-7:30 p.m.

Wednesday - aerobics 8:30-9:30; adult open gym 1:30-4:30; food bank 2-4 p.m.; aerobics 4-5 p.m.;

basic education 5-9 p.m.; high school 5-9 p.m.; aerobics 6:30-7:30; Alcoholics Anonymous 7-9 p.m.

(Summer activities at the Kings Mountain Parks and Recreation Department)

Monday - obstacle course/scooter relays 9:30-10:30; basketball hotshot competition 10:30-11:30; adult gym 1:30-4:30.

Tuesday - obstacle course/scooter relays 9:30-10:30; basketball hotshot competition 10:30-11:30; whiffleball/homerun derby 11:30-12:30; volleyball, gameroom activities, open gym 3-5 p.m.

Wednesday - obstacle course/scooter relays 9:30-10:30; basketball hotshot competition 10:30-11:30; whiffleball/homerun derby 11:30-12:30; adult open gym 1:30-4:30 p.m.

Thursday - obstacle course/scooter relays 9:30-10:30; basketball/hotshot competition 10:30-11:30; whiffleball/homerun derby 11:30-12:30; volleyball, gameroom activities, kids open gym 3-5 p.m.

Friday - obstacle course/scooter relays 9:30-10:30; basketball/hotshot competition 10:30-11:30; whiffleball/homerun derby 11:30-12:30; gameroom activities in af-

ternoon.
Saturday - open gym 11 a.m.-3 p.m.

Banquet Tickets On Sale

Friday is the last day to purchase tickets for the annual Kings Mountain High all-sports banquet which will be held May 22 at 6:30 p.m. in the KMHS cafeteria.

Tickets may be purchased from

Sandra Bumgardner at the principal's office.

The banquet will honor athletes from all winter and spring sports, and the Male and Female Athletes of the Year will be announced.

Moore Receives G-W Award

Boiling Springs — Susie Moore of Kings Mountain received the Softball Offensive Contribution award at the 1989 Gardner-Webb

Sports Banquet. She led the team in batting with an average of .557, including 1 double, 3 triples, 2 homers, and 26 RBIs.

Edwards Signs With G-W

Roslyn Edwards, the national Junior College Athletic Association's leading scorer last season, has signed an athletic scholarship to attend Gardner-Webb College. Edwards, who played for Kennedy-King College in Chicago, Illinois, averaged 33.9 points per game last season, outdis-

tancing her nearest competition by 5.8 points per game.

Edwards joins a Gardner-Webb squad that finished with a school record 19-9 last season, under first year coach Bud Black, despite playing with thirteen freshmen and only one senior on the roster.

KM Tennis Team Loses To Shelby In Title Match

Kings Mountain High's tennis team fell to Shelby 8-1 in the battle for the Southwestern 3-A Conference championship Thursday.

Layton 6-2, 6-4; Schweppe-White (S) def. Bowen-Hendricks 6-4, 7-5; Howell-Yarborough (S) def. Bess-Thompson 8-2.

The Lions finished with a 7-0 conference record to KM's 6-1 mark. Shelby has won the SWC crown 18 of the last 19 years. KM won it the other year.

Kings Mountain's only winner was Kelly Bess, who defeated Tyler Suttle 2-6, 6-4, 6-4 in the number five singles match.

The KM team is scheduled to compete in the Western Regionals this week.

THE RESULTS

(Singles)

David Schweppe (S) def. Jeff Guy 7-5, 6-1; Andy White (S) def. Dale Bowen 6-3, 6-1; Joe Suttle (S) def. Jay Hendricks 6-1, 6-3; Craig Goforth (S) def. Scott Layton 6-1, 6-4; Kelly Bess (KM) def. Tyler Suttle 2-6, 6-4, 6-4; Tripp Howell (S) def. Kevin Bess 6-2, 6-1.

(Doubles)

Suttle-Goforth (S) def. Guy-

HOTSHOT COMPETITION

Hotshot competition is held each Tuesday and Thursday from 3-5 p.m. at the Kings Mountain Community Center gym. The competition is held during kids open gym time and is open to youngsters ages 9-12 and 13-15.

CREASON HOME IMPROVEMENTS

CARPENTRY, ROOFING, CONCRETE, TRACTOR & BACKHOE WORK

"FREE ESTIMATES"

CALL - 435-5759 OR 866-1678

Subscribe To The Herald

MITA

(Including Gestetner, Adler - Royal, and Monroe)

MBS OFFERS COPIER SERVICE AGREEMENTS USING GENUINE SHARP SUPPLIES

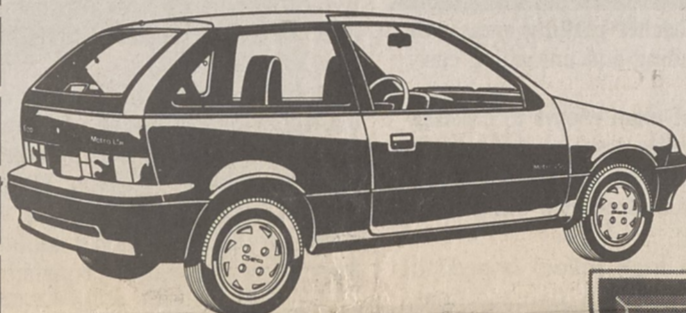
Call 739-1103 For Price Quotes

• We Also Service Other Major Brands •
• 21 Years Experience •

Marathon Business Services
126 W. Mountain St. • Kings Mountain
739-1103

CARTER GEO IMPORTS

It's Brand New. It's Affordable, It's Here, Carter Geo Imports.



1989 METRO

FRESH APPEARANCE

Aerodynamic grille. Distinctive hood, fenders, quarter panels, taillamps.

COMFORTABLE, ATTRACTIVE, FUNCTIONAL INTERIOR

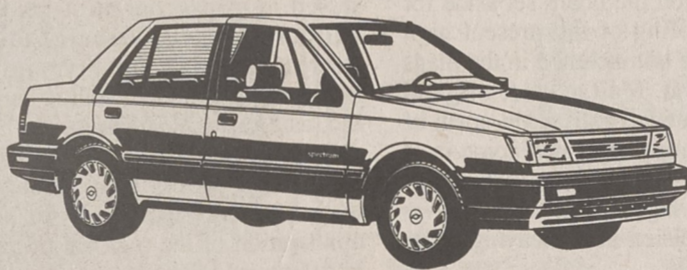
High-back vinyl and cloth bucket seats. (Metro Hatchback 3-Door). Instrument panel swept into door trim panel. Rear seat tether anchors for child safety seat. Molded pockets on driver door. Expansive glass area.

THOUGHTFUL DESIGN

Low liftover height for easy cargo loading. Headlamps-on alert indicator. Roomy interior space.

ECONOMICAL PERFORMANCE

Electronic fuel injection. 5-speed manual transmission. Highest fuel economy ratings in America (53 MPH city/58 MPH highway).



1989 SPECTRUM

CONTEMPORARY APPEARANCE

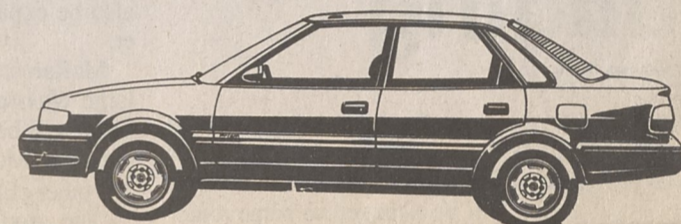
Newly designed radiator grille. Wraparound front and rear bumper. Formal roofline in sedan models. European flair with Japanese economy.

THOUGHTFUL, ROOMY INTERIOR

Conveniently grouped instrumentation. Almost 30 cubic feet of cargo space with rear seat folded (hatchback). 11.4 cubic-foot trunk (sedan) opens at bumper level for easy loading. Fully carpeted load floor.

EXCITING PERFORMANCE

1.5-liter 4-cylinder engine. 5-speed manual transmission (standard). 3-speed automatic transmission available. Rack and pinion steering. All-season, steel-belted radial tires. Excellent maneuverability. Power-assisted front disc/rear drum brakes.



1990 PRIZM

CONTEMPORARY APPEARANCE

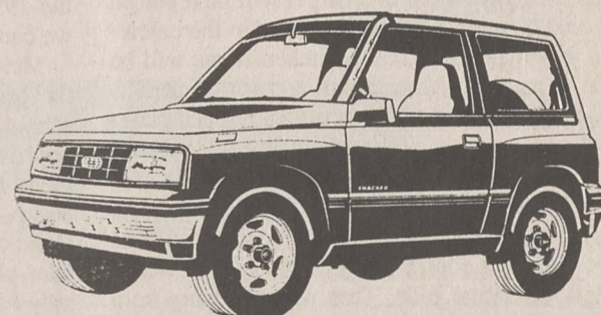
Quality and prestige look. Looks larger than it is. Aerodynamic style — a new feeling of roundness. One-piece wraparound bumpers. Distinctive grille. Flush-mounted tinted windshield and backlight. Bumper-level opening decklid and liftgate.

COMFORTABLE, ATTRACTIVE, FUNCTIONAL INTERIOR!

Low-back cloth reclining front bucket seats. 60/40 split flat folding rear set (hatchbacks). Convenient center console. Slide-out cup holder.

PERFORMANCE AND ECONOMY

1.6 liter 4-cylinder engine. 16-valve design. Dual overhead cam. Electronic port fuel injection. 5-speed manual transmission. Rear stabilizer bar.



1990 TRACKER

SPORTY APPEARANCE

Composite headlamps. Body-color soft bumper fascia black rub strips with red accent stripe. Matching body-side moldings. Body-color outside rearview mirrors. Blackout-treatment bodyside upper.

COMFORTABLE, SPORTY INTERIOR

Fully reclining front bucket seats. Two-passenger folding rear bench seats. Side window defoggers. Center and outboard ventilation outlets. Console with package tray.

ON/OFF ROAD PERFORMANCE

1.6-liter 1.4 engine. 5-speed manual transmission. (Tracker and Tracker Convertible). 2-speed transfer case. Manual-locking front hubs for 2WD or 4WD. Full frame with MacPherson strut front suspension. Dual trailing arm rear suspension with rigid axle.

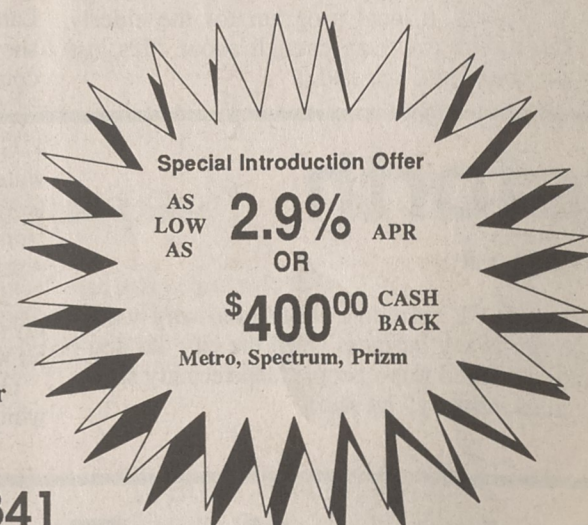
CARTER

GEO IMPORTS

Ray Walker
Rick Philbeck
Joe Hamrick
Thomas Hester

Mark Carter
Mark Johnson
Morris Ramsaur
Carl Bell

200 WEST DIXON BLVD., SHELBY 482-4341



REFLECTIONS TEEN CLUB — and — **KINGS MOUNTAIN OPTIMIST CLUB**
presents
END OF SCHOOL YEAR DANCE
For Students Of
Kings Mountain School District
(Grades 6-12)
PLACE: Kings Mountain Community Center
WHEN: May 26, 1989
TIME: 7 p.m. til 11 p.m.
Admission: \$3.00 (No Re-entry)
Concessions Will Be On Sale
Security Will Be Provided
Portion Of Proceeds Goes To Kings Mountain Optimist Club